



Building healthy futures in Baltimore: Integrating health & education at KIPP Baltimore

Beth Marshall, DrPH, MPH
Assistant Scientist

Johns Hopkins Bloomberg School of Public Health
Wellness Lead, Rales Center



EXPLORING OPPORTUNITIES for COLLABORATION BETWEEN HEALTH and EDUCATION TO IMPROVE POPULATION HEALTH

WORKSHOP SUMMARY



INSTITUTE OF MEDICINE
OF THE NATIONAL ACADEMIES

UNDERSTANDING LINKS BETWEEN ADOLESCENT HEALTH AND EDUCATIONAL ATTAINMENT*

MARGOT I. JACKSON

Is the Welfare State Effective?

Ec
C

Education Improves Public Health and Promotes Health Equity

International Journal of Health
Services

2015, Vol. 45(4) 657-678

© The Author(s) 2015

Reprints and permissions:

sagepub.com/journalsPermissions.nav

DOI: 10.1177/0020731415585986

joh.sagepub.com

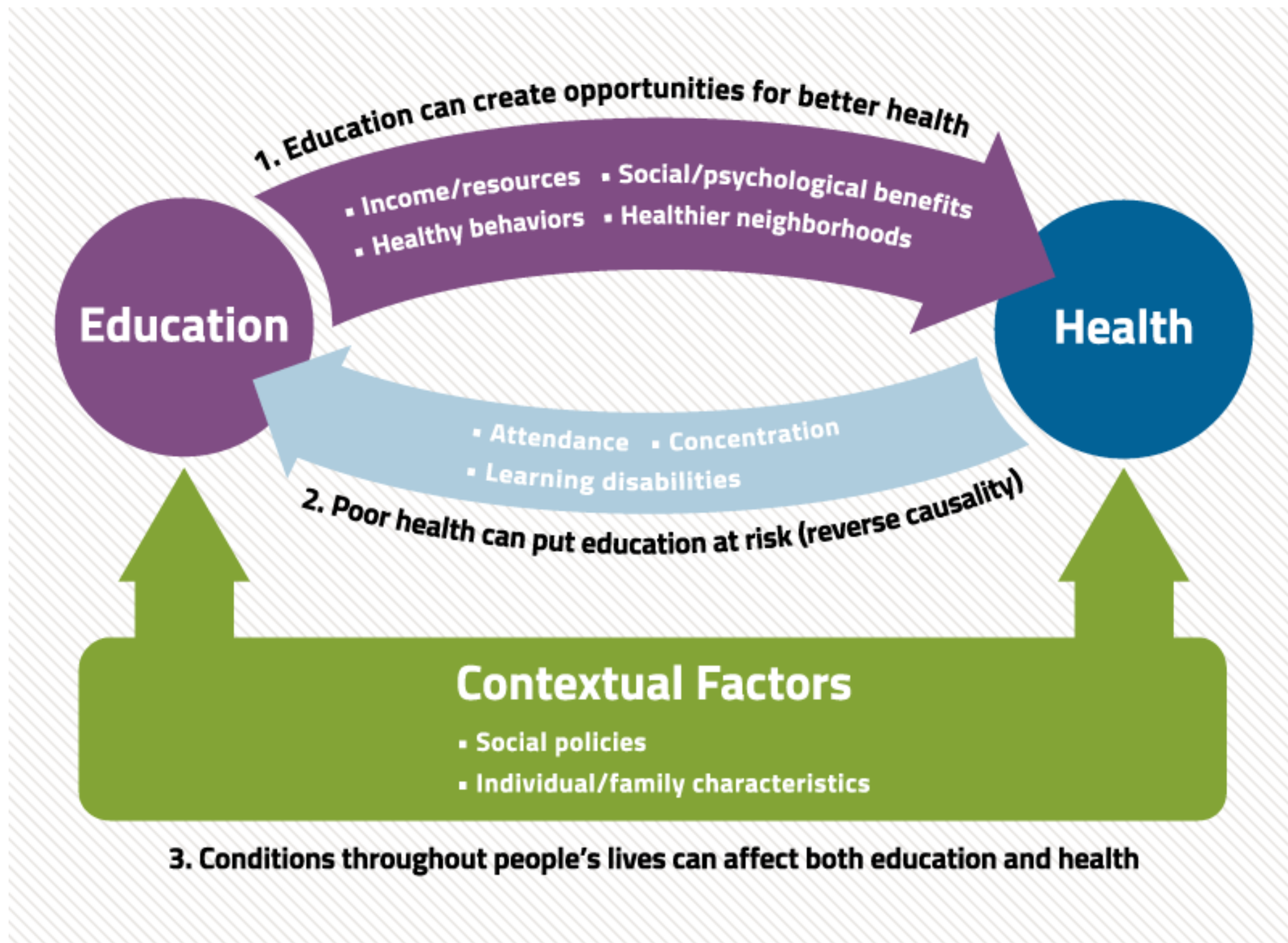


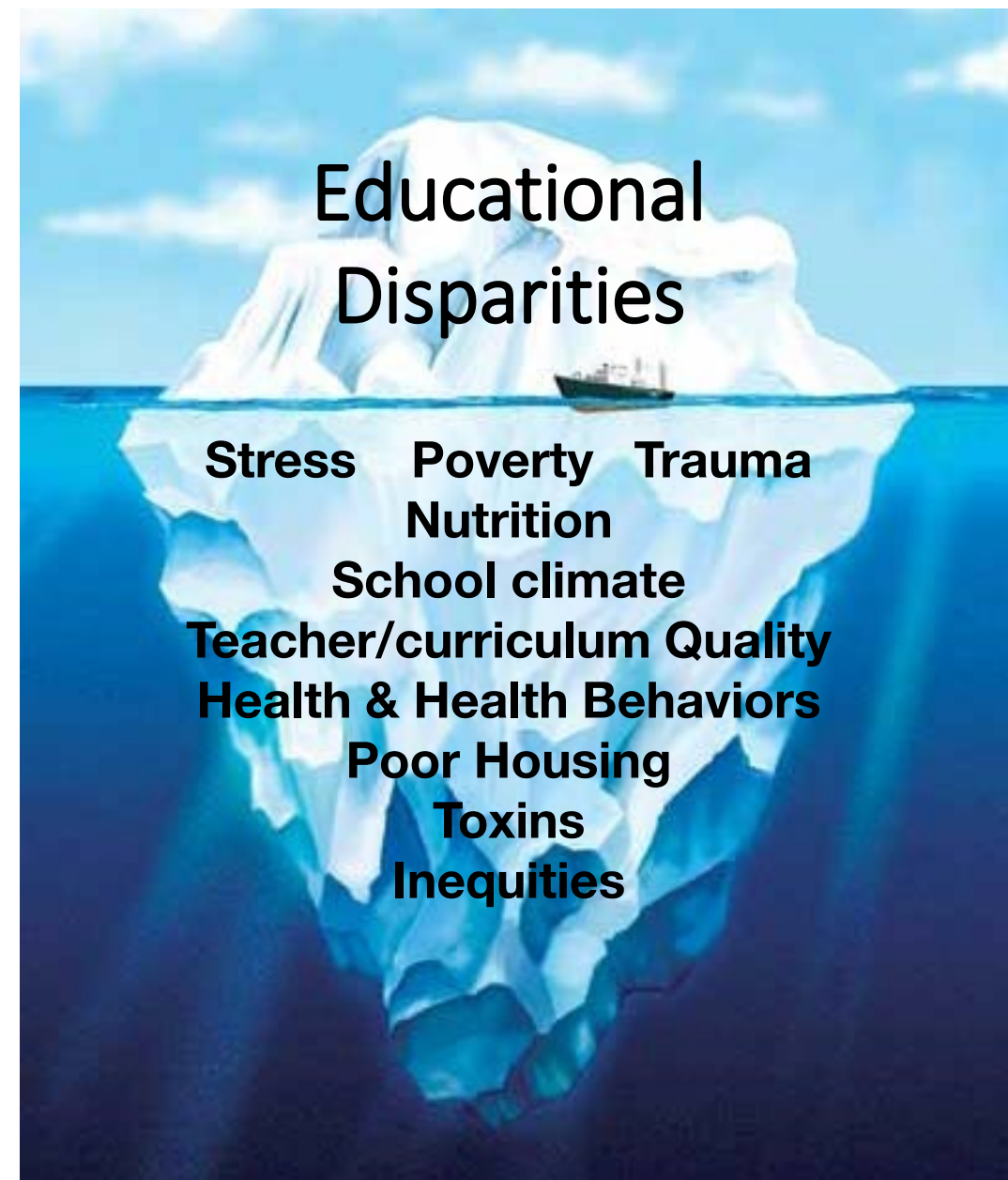
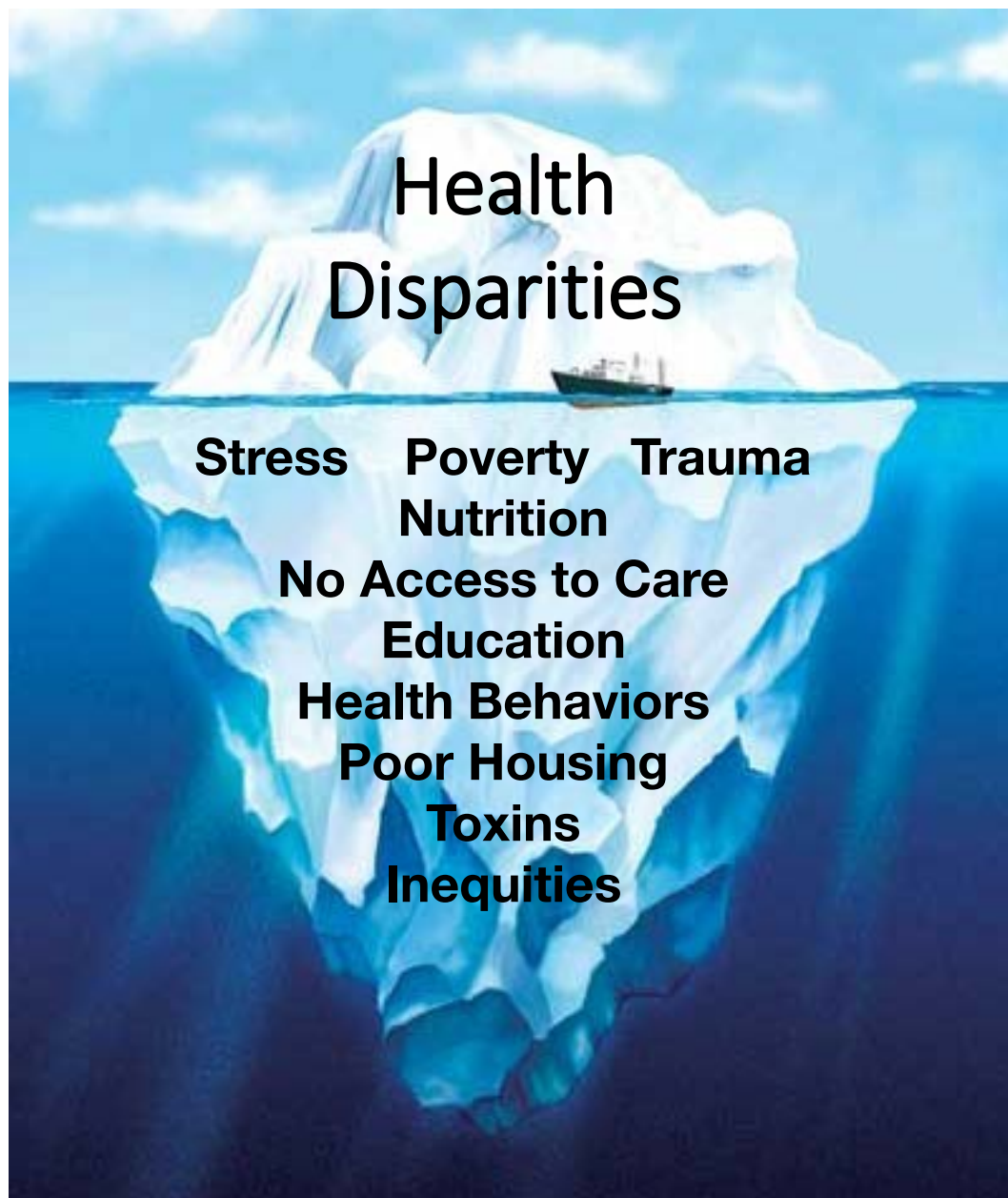
Robert A. Hahn¹ and Benedict I. Truman¹

FRAMING HEALTH MATTERS

Education: A Missed Opportunity for Public Health Intervention

Alison Klebanoff Cohen, MPH, and S. Leonard Syme, PhD





Adapted from: Iton, A. California Endowment



The Rales Center's **vision** is to be a national leader in developing, evaluating, and disseminating new **school-based models** that integrate health, educational, and developmental services for young people and their families.



KIPP: BALTIMORE
ACADEMIC EXCELLENCE. COLLEGE PREPARATION.



K-4th

848

students



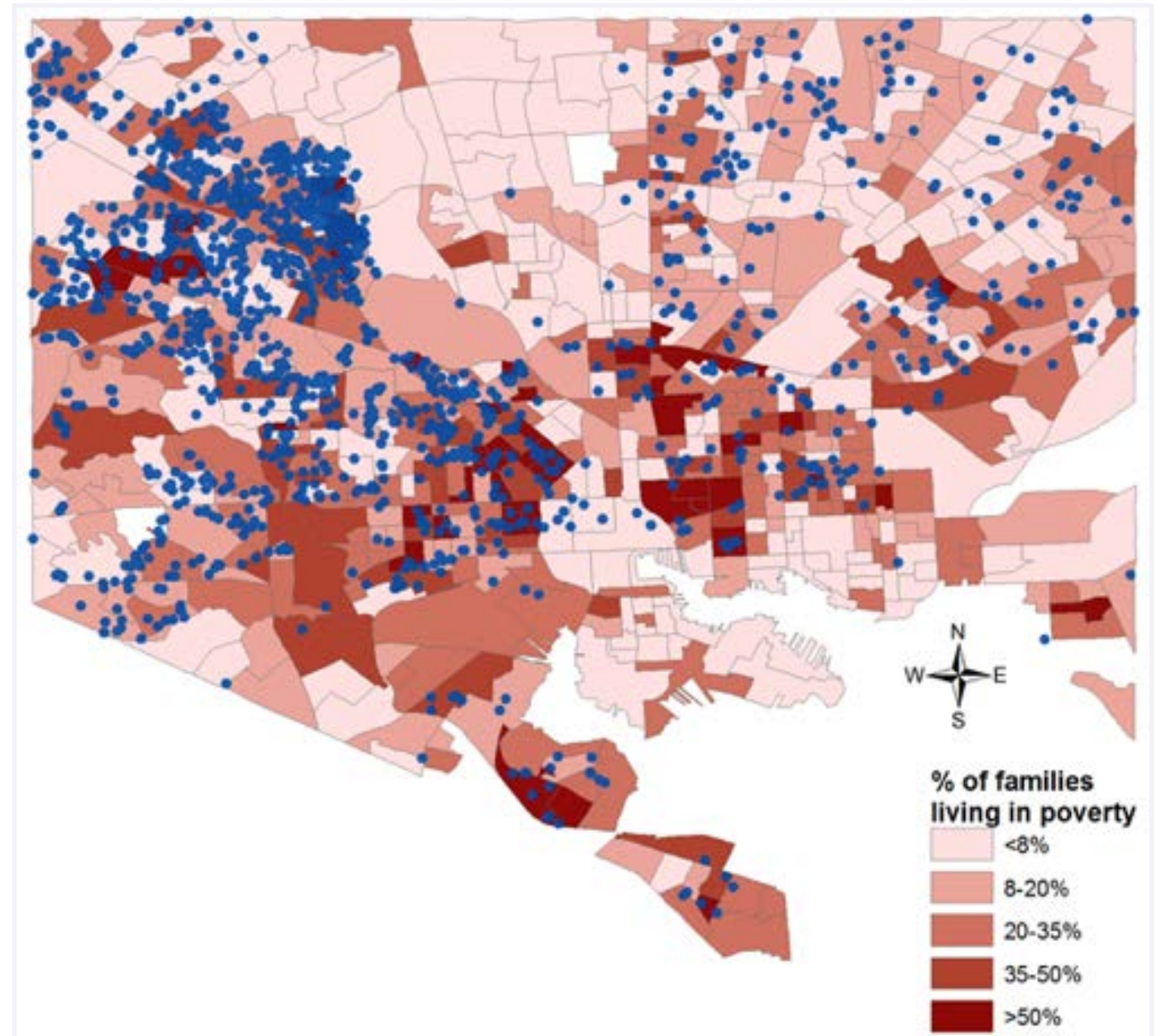
5th-8th

789

students

KIPP Student demographics

- 99% African American
- More likely to live in socioeconomically disadvantaged communities
- 70-80% economically disadvantaged



Neighborhood poverty levels, KIPP Baltimore students.

Our enhanced school health staffing model allows us to take a population health approach to comprehensive school health and wellness.



Innovative Treatment of Chronic Conditions



Medications prescribed and managed by the school health center



Medications delivered right to school



Students take their daily medications in the RHC

Evaluation Goals

- 1. Characterize baseline health needs and resources**
- 2. Track the process of implementation**
- 3. Evaluate impact and cost effectiveness**

So, how are we doing?



Pediatric care



Wellness curriculum



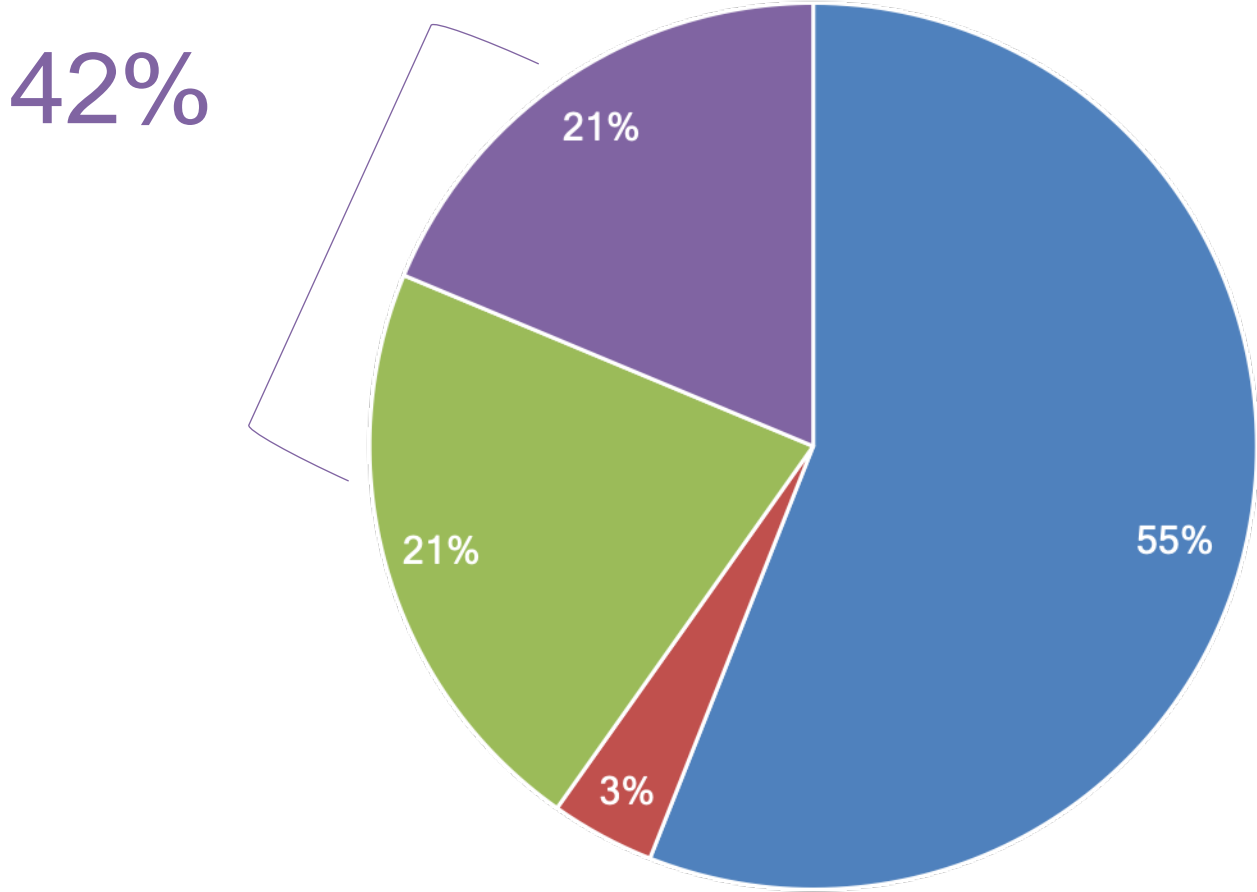
Teacher wellness



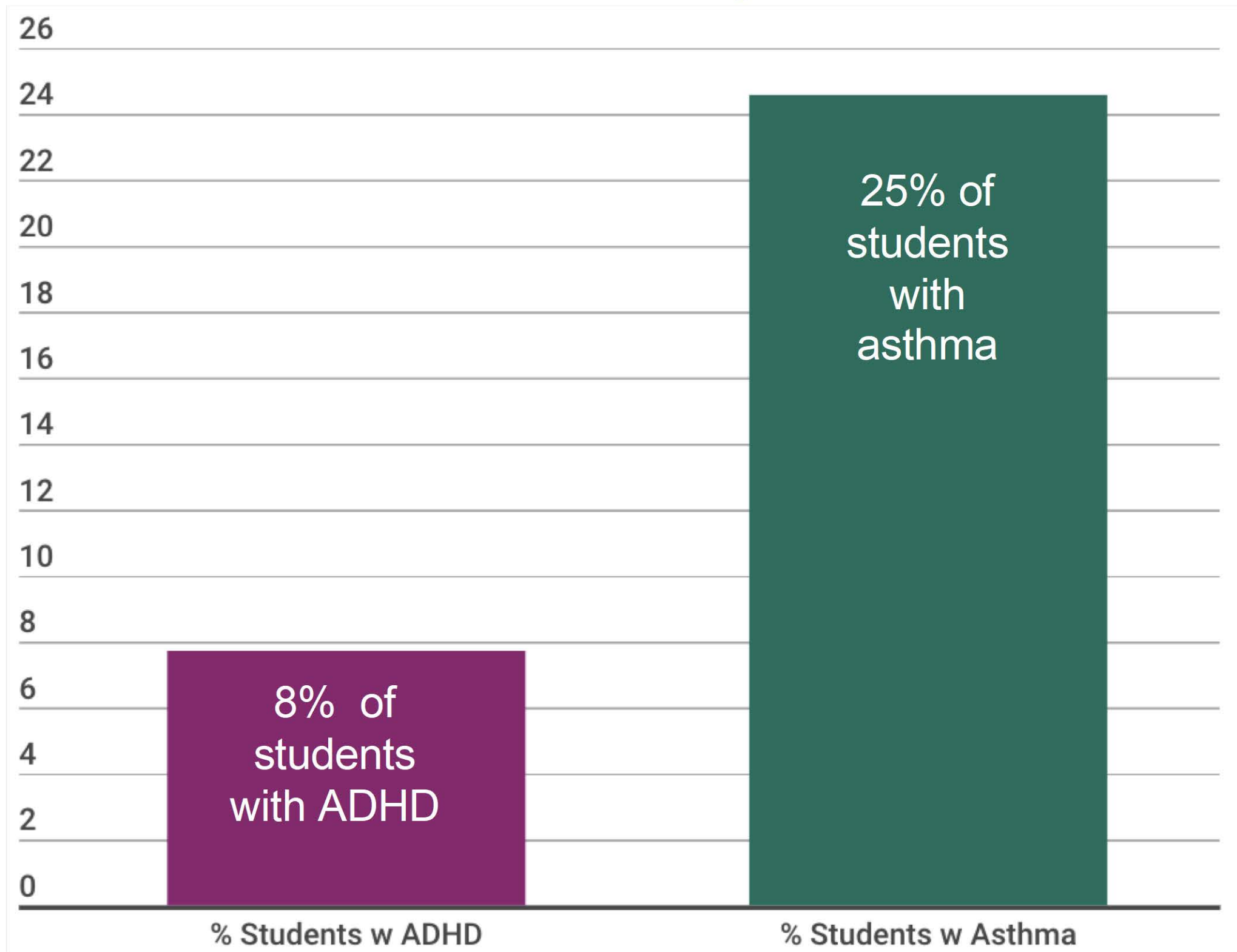
53% of students
failed vision
screening, a rate
higher than the
national average

More than one third of students are overweight or obese

■ Normal weight ■ Under weight
■ Overweight ■ Obese



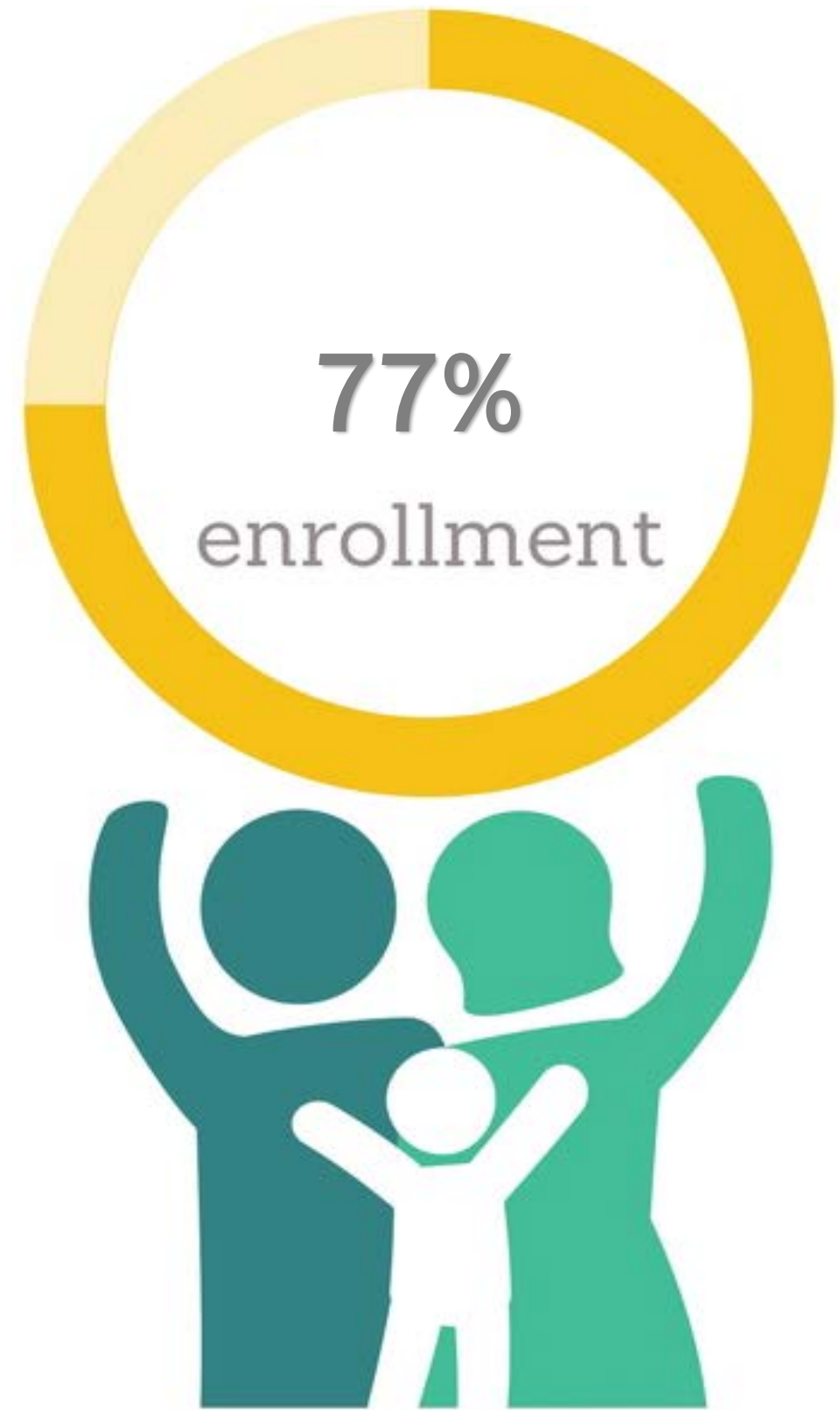
Asthma and ADHD prevalence



Evaluation Goals

1. Characterize baseline health needs and resources
- 2. Track the process of implementation**

The Rales Health Center has among the **highest** School Based Health Center enrollment rates in Maryland.



In the first three years of the program, there were:

54k visits to our school nurses.

3,955 visits to our pediatrician and nurse practitioner.

109 families connected with our family advocate.



93% of KIPP students participated
in **at least one** school-wide
screening program for asthma, dental
hygiene, fitness/obesity, or vision.

That's **8,505** screenings!

547

students participated in vision screening at school, last year. Students who failed received in-school optometric exams



3 1 9

pairs of eyeglasses were provided in-school



Brain Breaks!

In one year, more than

458K

student minutes
of physical activity were
brought into classroom
activities to get kids moving



RUTH
AND
NORMAN
RALES

Rales
Center
for the Integration
of Health
and Education

JOHNS HOPKINS
CHILDREN'S CENTER

Evaluation Goals

1. Characterize baseline health needs and resources
2. Track the process of implementation
- 3. Evaluate impact and cost effectiveness**

Having a health center at KIPP
prevented 212 emergency room
visits in the first three years of
the program

212

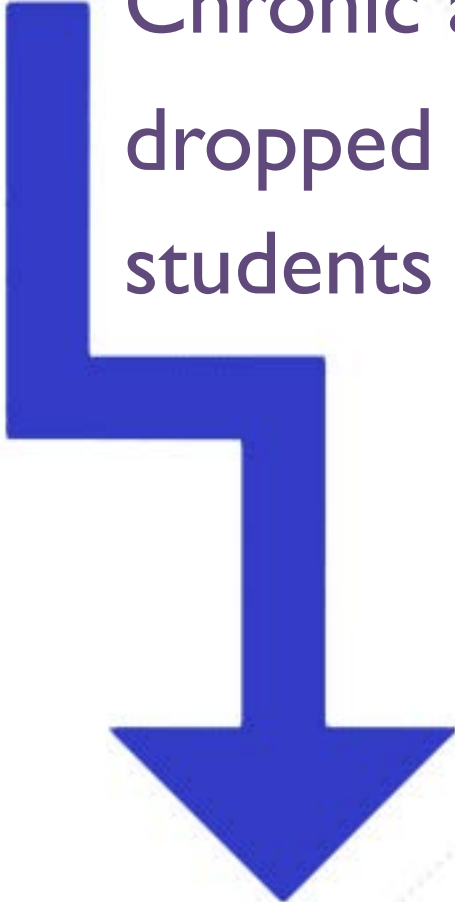


RUTH
AND
NORMAN
RALES


Rales
Center
for the Integration
of Health
and Education

JOHNS HOPKINS
CHILDREN'S CENTER

Between years 1 & 3 ...



Chronic absenteeism
dropped by **49%** among
students with **asthma**



Chronic absenteeism
dropped by **50%** among
students with **ADHD**

Despite higher staffing costs, every \$1.00 invested in the Rales Health Center returns **more than \$4.20 of social benefit**



=



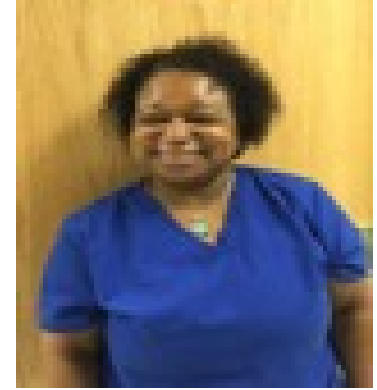
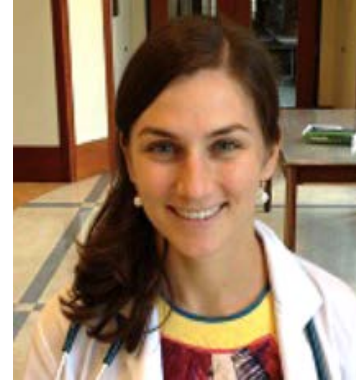
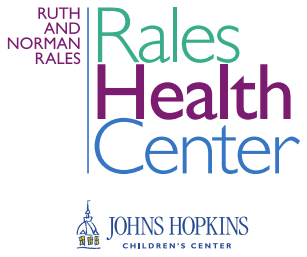
American Journal of Preventive Medicine

RESEARCH ARTICLE

Cost Benefit of Comprehensive Primary and Preventive School-Based Health Care

William V. Padula, PhD, MS, MSc,¹ Katherine A. Connor, MD, MSPH,²
Josiah M. Mueller, RN, BSN, MHS,¹ Jonathan C. Hong, MD, MHS,¹
Gabriela Calderon Velazquez, MEd,² Sara B. Johnson, PhD, MPH^{2,3}

+ Rales Team



Parent Engagement



Wellness



Administration & Evaluation

