



# SKCCC Update

**Michael A. Carducci, M.D., FASCO**

**AEGON Professor of Prostate Cancer Research**

**Associate Director for Clinical Research**

**Don Coffey**  
**1932-2017**

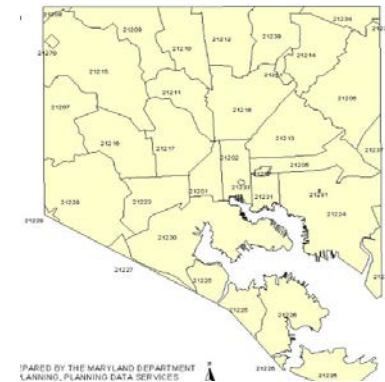


# Update to the Maryland Cancer Control Council November 15, 2017



# Clinical Research Efforts and Impact 2017

- On target to enroll over 1700 patients onto Interventional clinical trials
- Represents 21% of our patients
- Nearly 5000 patients participate in non-interventional studies
- Minority accrual mirrors the minority representation within our catchment area- The State of Maryland



# Clinical Research Efforts and Impact

- Requires robust infrastructure to be regulatory compliant and science-driven!
  - Clinical Research Office
  - 12 Program Managers
  - Over 70 Research Nurses
  - Nearly 90 study coordinators/ regulatory specialists
  - Over 400 clinical protocols
  - Coordination of trials across the health system, clinical trial networks, and with collaborating institutions
  - Supports research through National clinical trials networks from early phase to late phase trials, bone marrow transplant, immunology, etc

# Major Research Accomplishments Over the Past 5 Years



Discovery, validation, and population-scale assessment of **genomic and epigenomic biomarkers for human cancers** (ComfirmMDx for prostate cancer; PapGene for endometrial and ovarian cancers; circulating tumor DNA tests for many different cancers; detection platforms like Safe-Seq and Gemini)



Translational research and development of **anti-PD-1 immunotherapy** (for melanomas, non-small cell lung cancers, mismatch repair-deficient cancers, and virally-induced cancers)



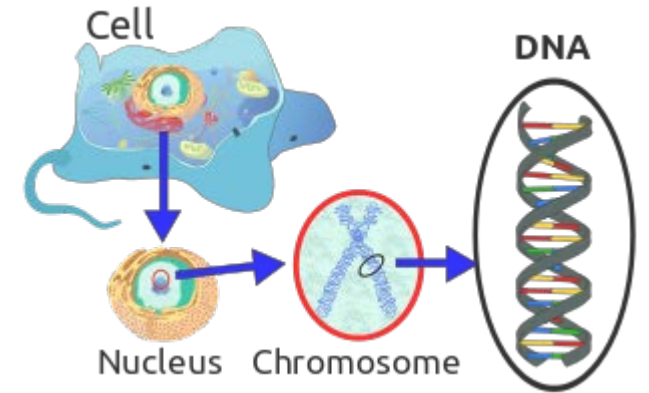
Elimination of **histocompatibility barriers to hematopoietic stem cell transplantation** (revolutionizing the treatment of leukemia and many other conditions)



Advancement of **epigenetic approaches to cancer treatment** (epigenetic reprogramming as 'priming' for cancer chemotherapy and immunotherapy)



# New Initiatives Precision Medicine



- Established history of molecular profiling of tumors
- Anticipate that within the year we will sequence almost every tumor as part of routine pathologic review
- IT initiatives to make data available in secure, confidential manner
- Use of Gateway tumor board to assist clinicians in determining relevant molecular alterations
- Expansion of clinical trial portfolio for molecular driven trials agnostic to tumor type



**"Here's my  
sequence..."**

*New Yorker*



# Hopkins Kimmel Cancer Center and Health System Expansion

**Skip Viragh Outpatient Building**

**180,000 ft<sup>2</sup>**



**Community-Based Participant Engagement and Translation Core:**

**10,000 ft<sup>2</sup>**



**Suburban Hospital**

**7,000 ft<sup>2</sup>**



**Sibley Hospital**

**30,000 ft<sup>2</sup>**



**All Children's Hospital**

**46,800 ft<sup>2</sup>**



**Bayview Campus**

**25,000 ft<sup>2</sup>**





Johns Hopkins Clinical Research Network

# Expansion of Clinical Trials Improvements In Inclusion of Minority Patients



- An SKCCC Office of Community Cancer Research established under the direction of Drs. Groopman (AD for population sciences) and Carducci (AD for Clinical Research)
- Dina Lansey, M. S. N., R. N., appointed as Assistant Director for Diversity and Inclusion in Clinical Research
- Created and implemented a multifaceted plan for sustainable improvement in inclusion of minority subjects in clinical trials
  - Required formal cultural competency training
  - Identified gaps in clinical research portfolio for minority subjects (e.g. triple-negative breast cancer)
  - Refined clinical (and other) data systems
  - Undertook deep analysis of barriers at SKCCC to minority participation in trials (eligibility, transportation, financial, ect.)
  - Interventions assessed via studies (navigation, transportation, etc.)



<https://www.youtube.com/watch?v=h5DxCKa9Up8&list=PLz63q50S-1bHw4cey7E3B0JRPPY58iBDC>



### Clinical Trials

Johns Hopkins Kimmel - 2 / 3



- 1  **Clinical Trials: Hope and Anticipation**  
Johns Hopkins Kimmel  
3:48
- ▶  **Clinical Trials: Words & Phases**  
Johns Hopkins Kimmel  
4:38
- 3  **Clinical Trials: Expectations Realities & Challenges**  
Johns Hopkins Kimmel  
14:41

**Thank You**