

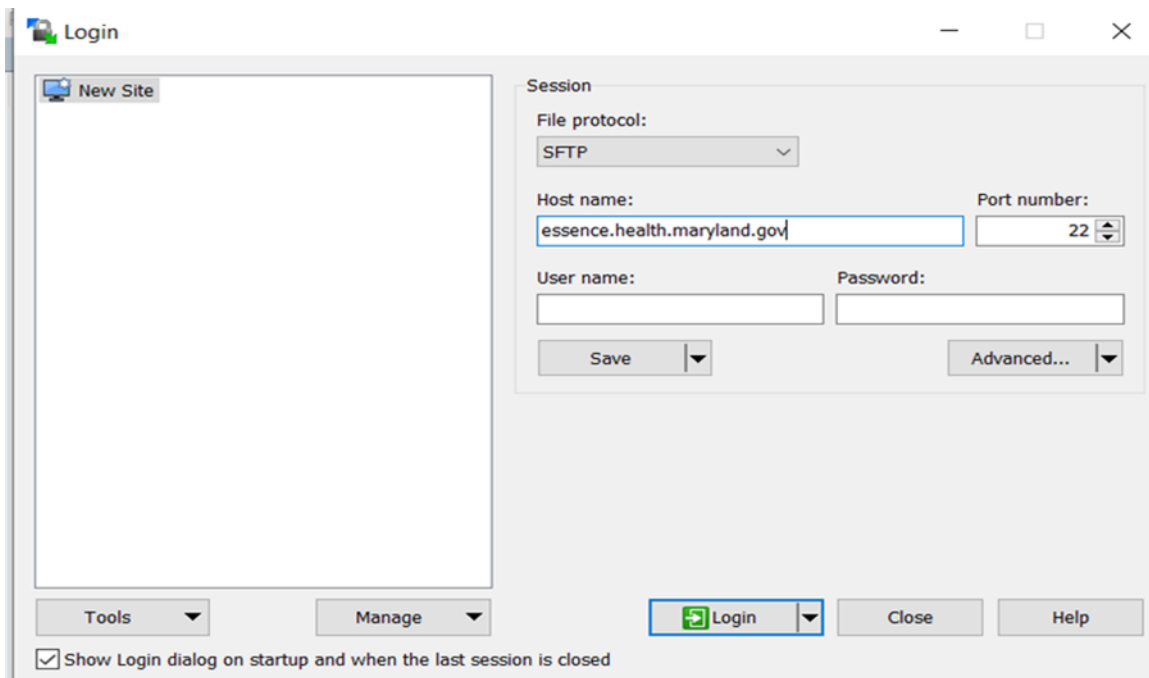
Using WinSCP to Connect to the Maryland Department of Health (MDH) data server

Step 1: Download and install the WinSCP Secure File Transfer Protocol (SFTP) software client.

1. Download the latest version of the WinSCP software client from:
<https://winscp.net/eng/download.php>
2. Save the file on your local computer.
3. Open the file that you saved in the previous step.
4. To install the software client, follow the onscreen prompts.

Step 2: Configure WinSCP

1. Open the WinSCP software that you installed in the previous steps.
2. Enter the credentials that the MDH Electronic Laboratory Reporting (ELR) onboarding



team gave to you. If you do not know your credentials, please contact the ELR Onboarding team at: mdh.elronboarding@maryland.gov

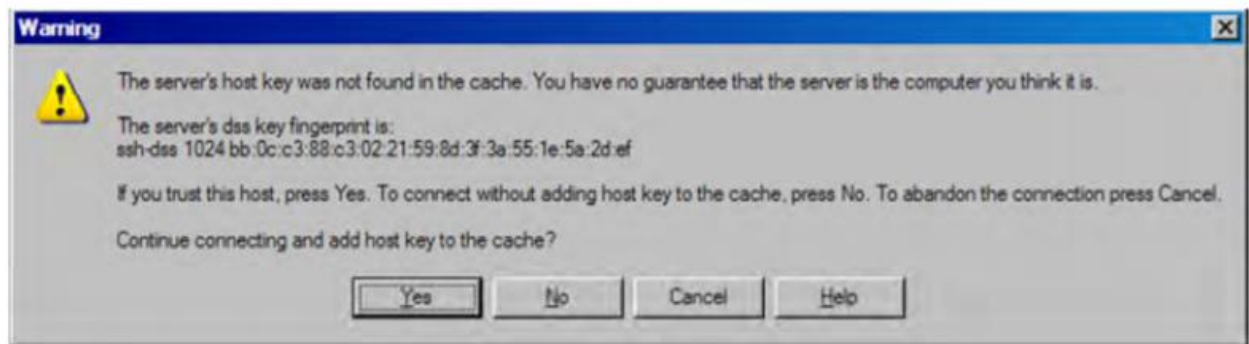
To save this configuration for your future use, click on the **Save** button.

Step 3: First login

1. To start a connection, click on the **Login** button.

The first login will prompt you to download the SSH key.

2. To accept the SSH key, click on the **Yes** button.



Step 4: Upload data

To transfer your data file(s) to the MDH server, please consult the [WinSCP QuickStart Guide](#) or the [complete WinSCP online documentation](#).