



2013

**Annual Report
Office of the
Chief Medical Examiner**

State of Maryland

Table of Contents

Cases Reported to OCME

- Action Taken1
- Autopsied2
- Manner of Death3

Manner of Death

- Classified by Sex4
- Classified by Race4

Medical Examiner Cases

- Cause and Manner of Death5
- A Three-Year Comparison.....7
- Manner and Jurisdiction8
- Type and Jurisdiction8

Toxicologic Testing

- Percentage of Cases Positive for Alcohol and/or Drugs.....9

Drug Abuse Death

- By Jurisdiction (3-Year Comparison)10
- Undetermined Manner Only11

Homicide Deaths

- Cause of Death12
- A Five-Year Comparison.....13
- Deaths by Age.....14

Firearm Deaths

- A Five-Year Comparison.....15

Sudden Infant Death Syndrome

- A Five-Year Comparison.....16
- Classified by Age.....17
- Classified by Race and Sex17

Sudden Unexplained Death in Infancy

- Classified by Age.....18
- Classified by Race and Sex18

Suicide Death

- Cause of Death19
- Youth Suicides20
- Deaths by Age.....21

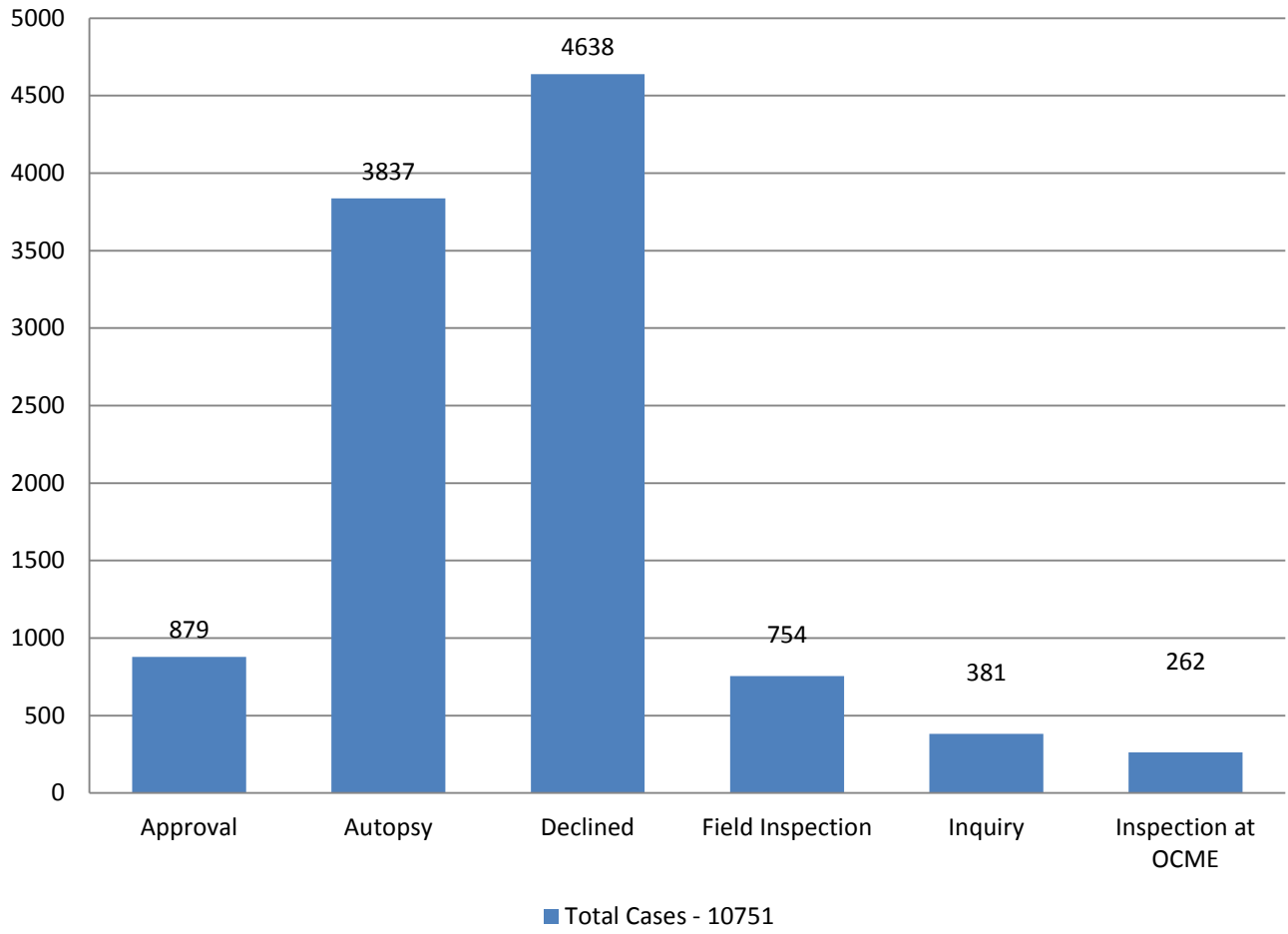
Transportation Deaths

- Classified by Activity22
- Type of Vehicle23
- Classified by Age24
- Alcohol/Drug Results25
- Alcohol Levels in Cases Testing Positive26

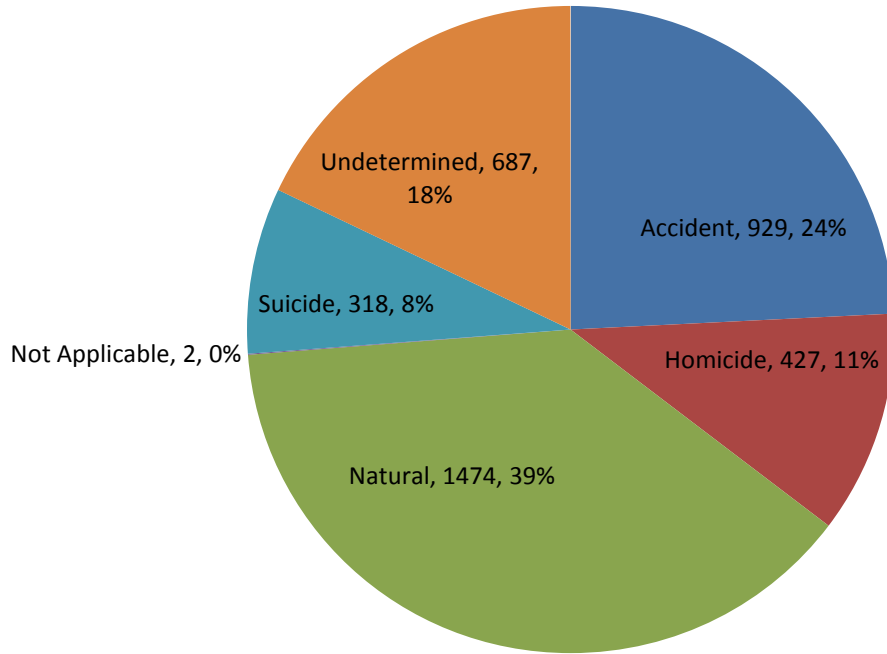
Addendum

- Miscellaneous Data27

Cases Reported to OCME - 2013 Action Taken



2013 Medical Examiner Cases Autopsied*

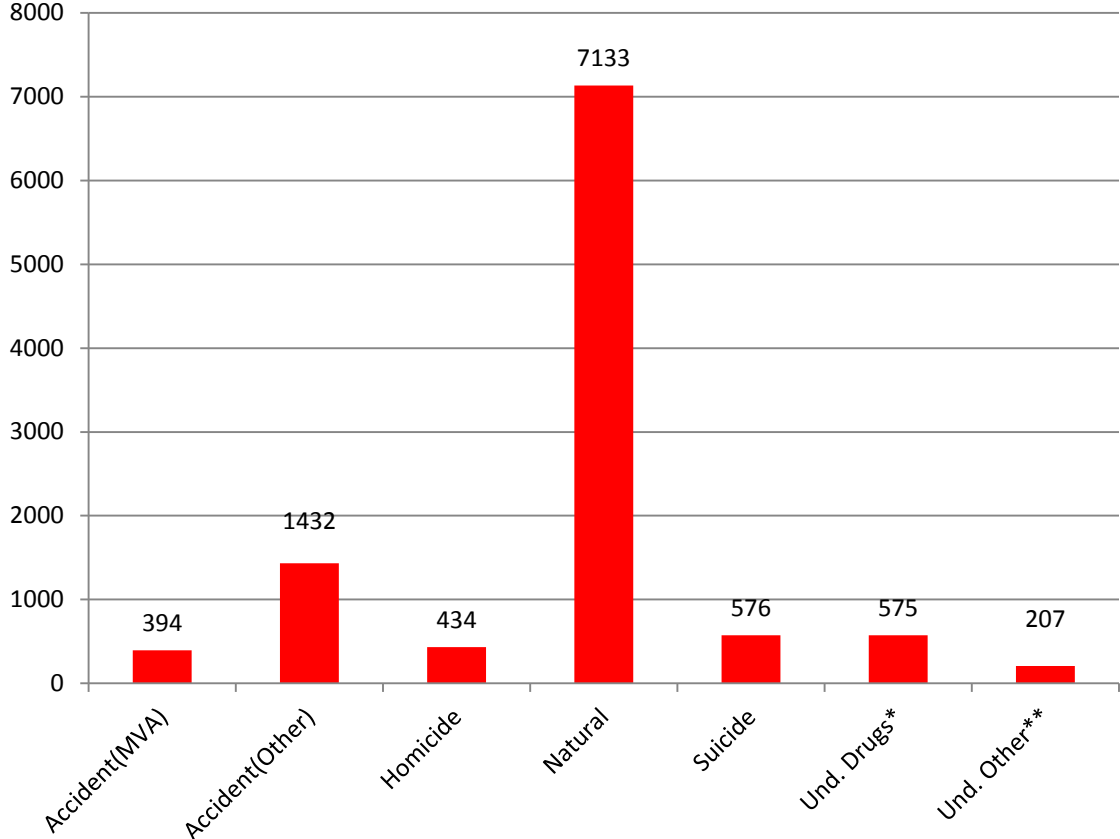


Total Cases Autopsied - 3837

*Two cases were classified as “not applicable” (e.g. stillborn & non-human remains).

**Seven homicides were not autopsied due to final disposition prior to Medical Examiner notification

2013 Cases Reported to OCME Manner of Death



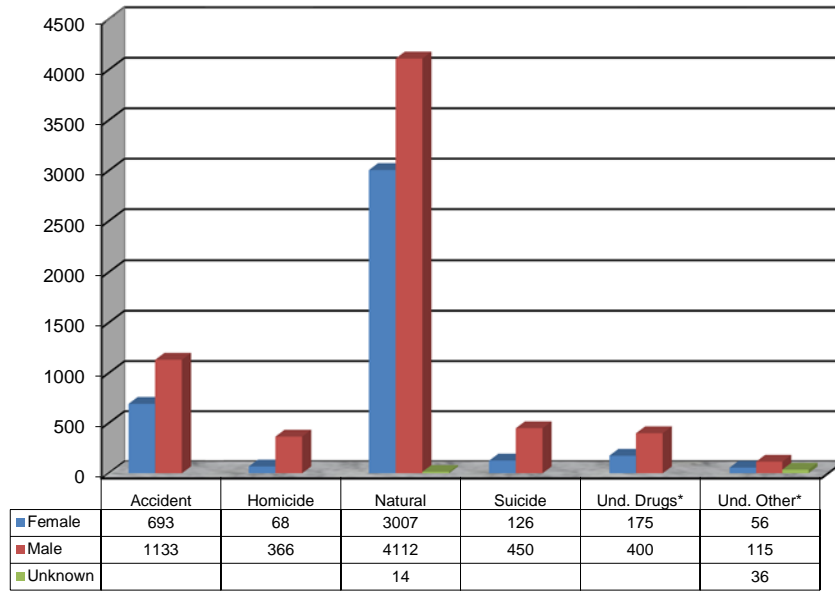
*Undetermined Manner: Drugs/Narcotics

** Undetermined Manner: Other

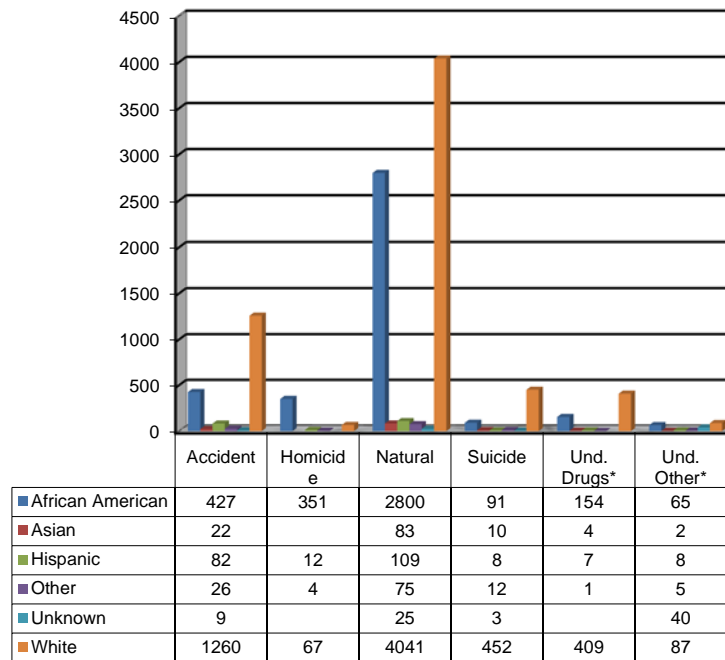
Total Cases - 10751

Manner of Death 2013

Classified by Sex



Classified by Race



*Undetermined Manner: Drugs/Narcotics

** Undetermined Manner: Other

Manner of Death

Cause of Death	Accident	Homicide	Natural	Suicide	Undeter- mined	Total
<i>Infectious disease</i>						
AIDS/HIV			12			12
Other infectious disease	19		103			122
<i>Malignant neoplasms (Cancer)</i>	9	1	326			336
<i>Endocrine and metabolic disease</i>						
Diabetes		1	56			57
Other Endocrine and metabolic	2		91		1	94
<i>Mental Disorders</i>						
Alcohol abuse	7		65		2	74
<i>Nervous system disease</i>						
Meningitis			5			5
Seizure disorder	4		29		2	35
Other CNS	10		36		3	49
<i>Circulatory system disease</i>						
Cardiovascular disease	109	2	4777	1	5	4894
Cardiac arrhythmia	11	2	85		1	99
Cardiomyopathy	3		35			38
Pulmonary embolism	14		77			91
Cerebrovascular disease	88		230		6	324
Aneurysm	1		25			26
Hemorrhage	27		48	4		79
Other cardiac	30	2	220		1	253
<i>Respiratory system diseases</i>						
Respiratory distress syndrome	1		3			4
Pneumonia	32		104		4	140
Chronic obstructive pulmonary disease	6		63			69
Asthma	3		23			26
Other respiratory	28	1	95	1	2	127
<i>Digestive system disease</i>						
Fatty liver			7			7
Cirrhosis	2		21			23
Liver Disease			8			8
Gastrointestinal hemorrhage	1		49			50
Other digestive			46			46
<i>Congenital/Perinatal</i>			20		3	23
<i>Sudden Infant Death Syndrome</i>			7			7
<i>Sudden Unexplained Death in Infancy (SUDI)</i>					39	39

Manner of Death

Cause of Death	Accident	Homicide	Natural	Suicide	Undeter- mined	Total
Traumatic injury						
Head/Chest injuries	183	20	5		5	213
Multiple injuries	413	11		22	7	453
Blunt force	43	10		3		56
Gunshot wound	4	307		263	2	576
Sharp force/cutting		52		18	1	71
Fracture	138		2			140
Other trauma	121	1	15	3	3	143
Poisons						
Alcohol intoxication	27		3		1	31
Drug intoxication/abuse	21	1	8	30	74	134
Alcohol and drug intoxication	11			7	5	23
Carbon monoxide	6			12		18
Cocaine intoxication	11			1	12	24
Narcotic intoxication	109	1	3	15	369	497
Narcotic and alcohol intoxication	35			5	142	182
Asphyxiation						
Airway obstruction/Aspirated stomach content	34		28		1	63
Hanging	1			147		148
Smoke inhalation	35	4		3		42
Strangulation/Asphyxiation	22	12	4	25		63
Drowning	46			3	8	57
Hypothermia	8					8
Hyperthermia	8					8
Thermal Injuries (Burns)	7	1			1	9
Electrocution	4					4
Other non-natural cause	132	5		13	11	161
Other natural cause			398			398
Unknown cause					47	47
Non-human remains			1		24	25
TOTAL	1826	434	7133	576	782	10751

Manner of Death - 3 Year Comparison

Medical Examiner Cases: Manner of Death, Maryland 2013

Manner of Death	Number	%
Accident	1826	17.0%
Homicide	434	4.0%
Natural	7133	66.3%
Suicide	576	5.4%
Undetermined	782	7.3%
Total	10751	100%

Medical Examiner Cases: Manner of Death, Maryland 2012

Manner of Death	Number	%
Accident	1859	18.6%
Homicide	429	4.3%
Natural	6362	63.6%
Suicide	579	5.8%
Undetermined	775	7.7%
Total	10004	100%

Medical Examiner Cases: Manner of Death, Maryland 2011

Manner of Death	Number	%
Accident	1684	17.1%
Homicide	431	4.4%
Natural	6432	65.4%
Suicide	563	5.7%
Undetermined	729	7.4%
Total	9839	100%

2013 Manner and Jurisdiction

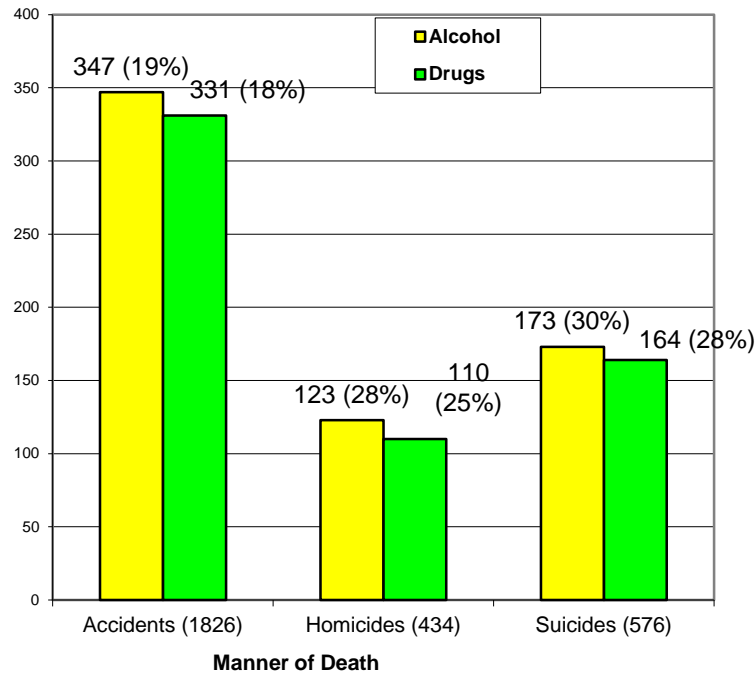
2013 - Manner	Accident	Homicide	Natural	Suicide	Undetermined	Total
Allegany	29	3	122	7	14	175
Anne Arundel	99	16	680	60	72	927
Baltimore City	530	258	2176	69	252	3285
Baltimore County	251	23	608	79	108	1069
Calvert	25	2	100	12	8	147
Caroline	6	0	19	4	1	30
Carroll	52	2	154	18	19	245
Cecil	31	4	99	15	20	169
Charles	23	2	64	19	9	117
Dorchester	10	0	23	3	4	40
Frederick	51	7	98	32	29	217
Garrett	14	0	39	2	7	62
Harford	65	4	270	21	31	391
Howard	38	3	132	20	28	221
Kent	8	0	19	5	1	33
Montgomery	193	14	743	80	47	1077
Out-Of-State	1	0	2	0	1	4
Prince George's	200	76	1016	48	59	1399
Queen Anne's	14	2	17	14	7	54
Saint Mary's	16	4	71	10	6	107
Somerset	5	1	40	3	4	53
Talbot	15	1	37	4	7	64
Washington	70	6	151	27	24	278
Wicomico	64	4	343	18	14	443
Worcester	16	2	110	6	10	144
Total	1826	434	7133	576	782	10751

2013 - Case Type	Approval	Autopsy	Declined	Inquiry	OCME Inspection	Scene Inspection	Total
Allegany	15	70	67	7	4	12	175
Anne Arundel	35	297	461	25	25	84	927
Baltimore City	317	1117	1521	163	72	95	3285
Baltimore County	150	440	305	39	37	98	1069
Calvert	8	57	61	3	4	14	147
Caroline	0	14	7	3	1	5	30
Carroll	20	105	99	2	3	16	245
Cecil	4	103	31	2	7	22	169
Charles	5	70	18	4	3	17	117
Dorchester	2	16	10	3	3	6	40
Frederick	17	127	43	5	8	17	217
Garrett	1	29	19	2	3	8	62
Harford	18	145	181	8	7	32	391
Howard	19	86	75	7	5	29	221
Kent	1	17	7	0	1	7	33
Montgomery	118	274	528	44	22	91	1077
Out-Of-State	0	3	1	0	0	0	4
Prince George's	70	451	732	32	21	93	1399
Queen Anne's	2	36	8	0	4	4	54
Saint Mary's	4	51	36	0	2	14	107
Somerset	2	17	24	2	2	6	53
Talbot	7	26	16	6	3	6	64
Washington	30	136	60	17	11	24	278
Wicomico	31	110	252	7	10	33	443
Worcester	3	40	76	0	4	21	144
Total	879	3837	4638	381	262	754	10751

2013 Toxicology Testing

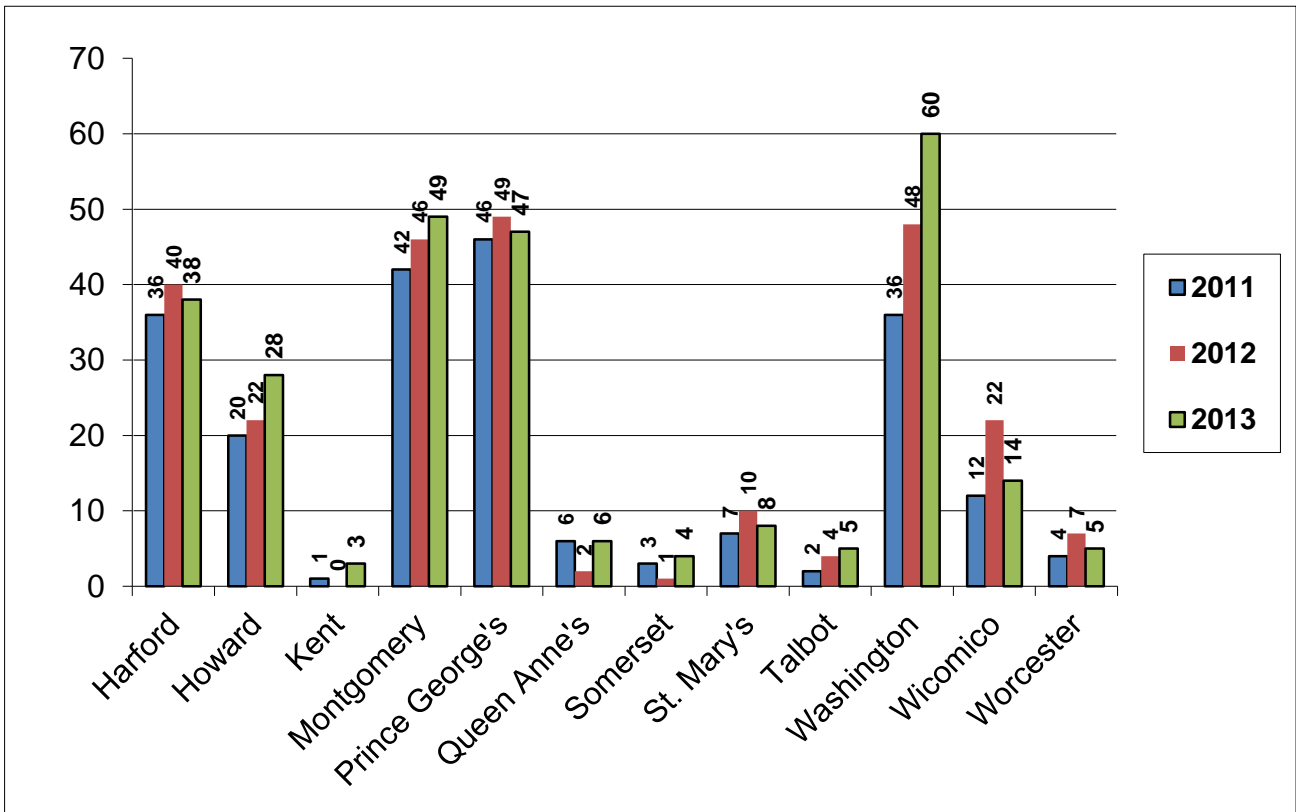
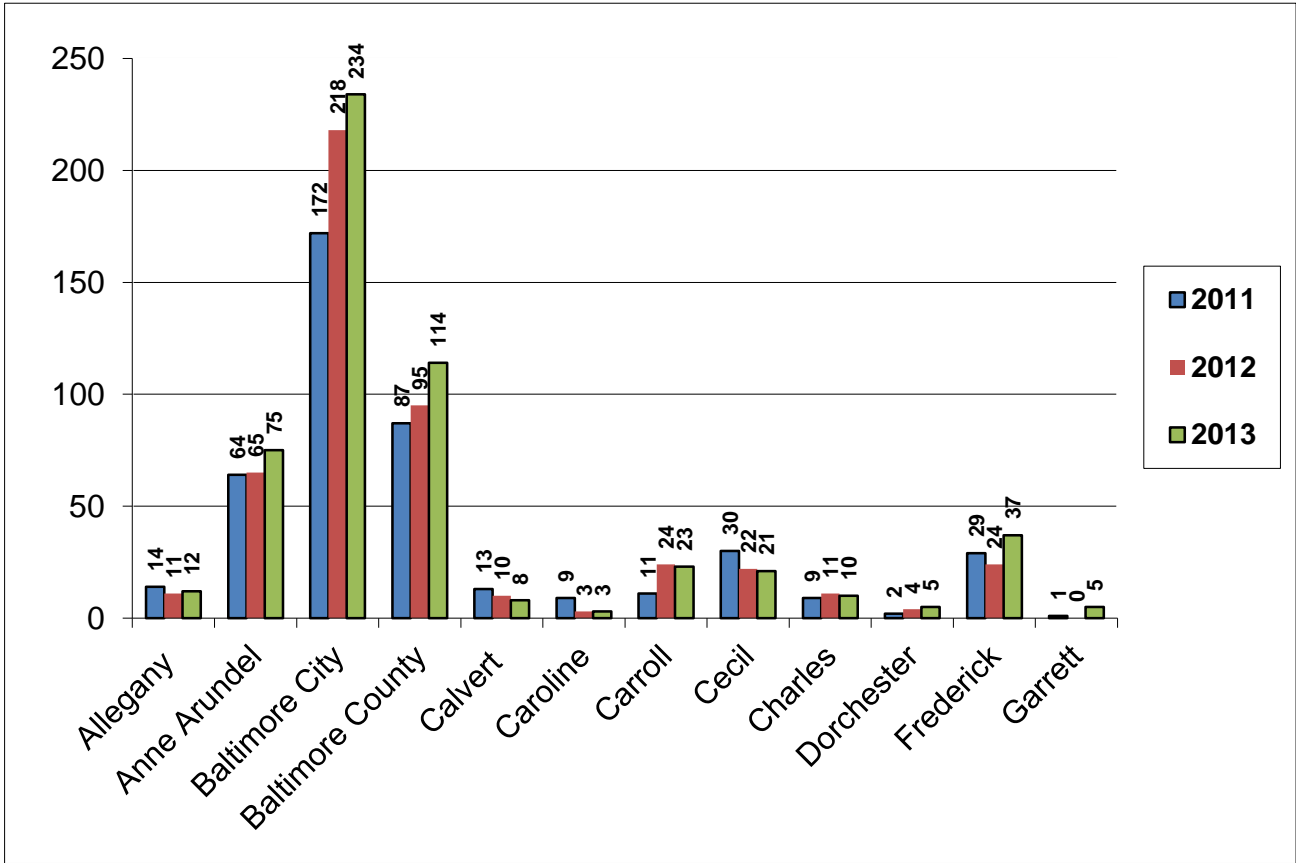
of Cases Positive for Alcohol and/or Drugs*
(Percentage of the Manner of Death)

*Drugs include heroin, morphine, cocaine, methadone and phencyclidine.

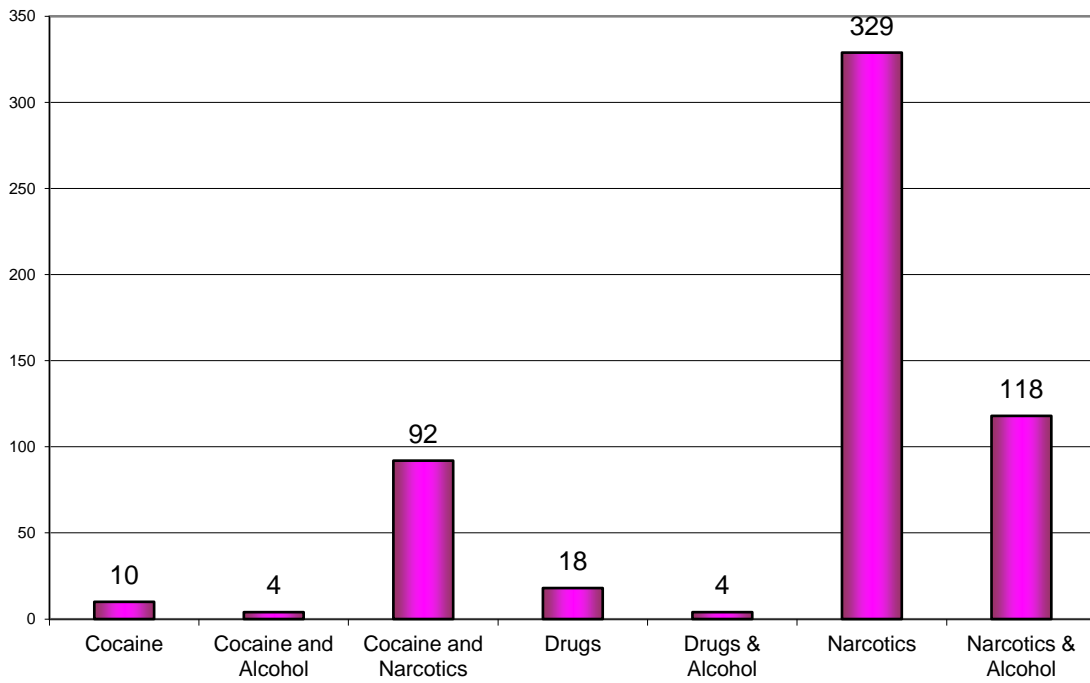


*Abused Drugs include Alprazolam, Amphetamine, Benzoylcegonine, Brompheniramine, Chlorpheniramine, Cocaine, Codeine, Diazepam, Diphenhydramine, Doxylamine, Fentanyl, Heroin, Hydrocodone, Hydroxyzine, Meperidine, Methadone, Methamphetamine, Methylenedioxyamphetamine, Methylenedioxymethamphetamine, Morphine, Nordiazepam, Normeperidine, Oxycodone, Phencyclidine, Propoxyphene, Tramadol, and Zolpidem. This list used in previous years was only Cocaine, Heroin, Methadone, Morphine and Phencyclidine.

Drug Abuse Deaths 3 Year Comparison by Jurisdiction 2011-2013



2013 Drug Abuse Deaths Undetermined Manner



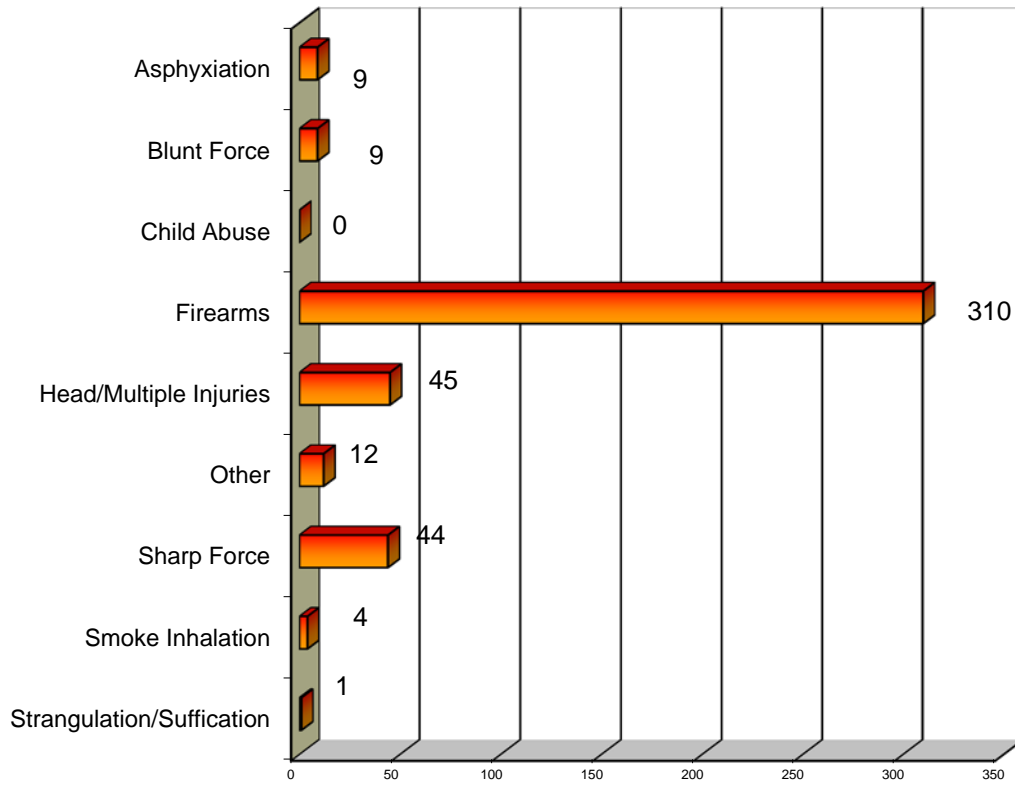
Total Cases - 575

Cocaine Tests: Benzoyllecgonine and Cocaine

Drug Tests: Alprazolam, Amphetamine, Brompheniramine, Chlorpheniramine, Diazepam, Diphenhydramine, Doxylamine, Hydroxyzine, Methamphetamine, Methylenedioxyamphetamine, Methylenedioxymethamphetamine, Nordiazepam, Phencyclidine, Propoxyphene and Zolpidem

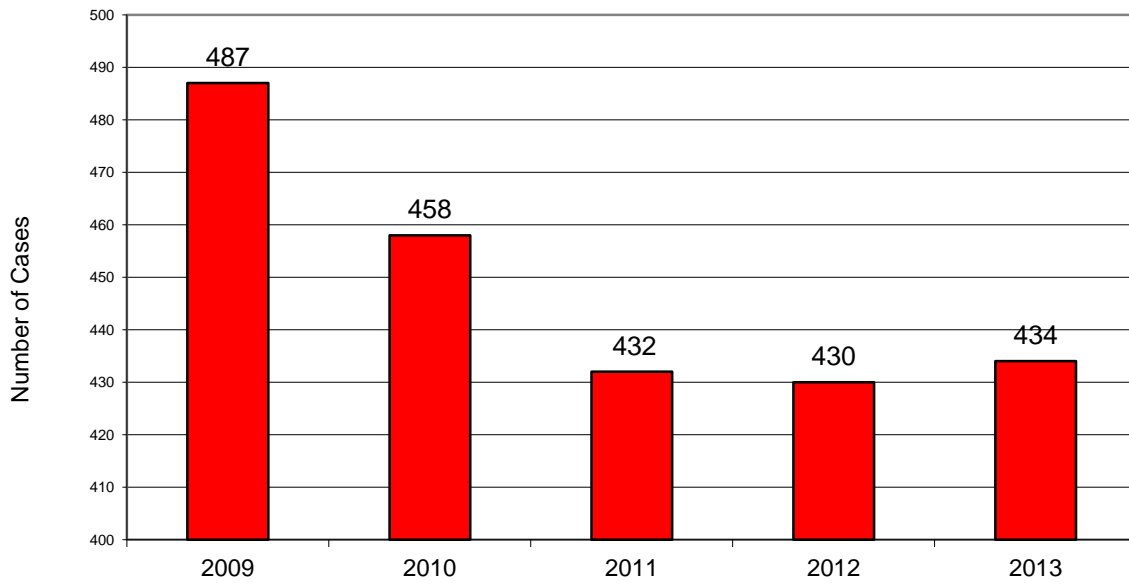
Narcotic Tests: Codeine, Fentanyl, Heroin, Hydrocodone, Meperidine, Methadone, Morphine, Normeperidine, Oxycodone and Tramadol

2013 Homicide Deaths Cause of Death

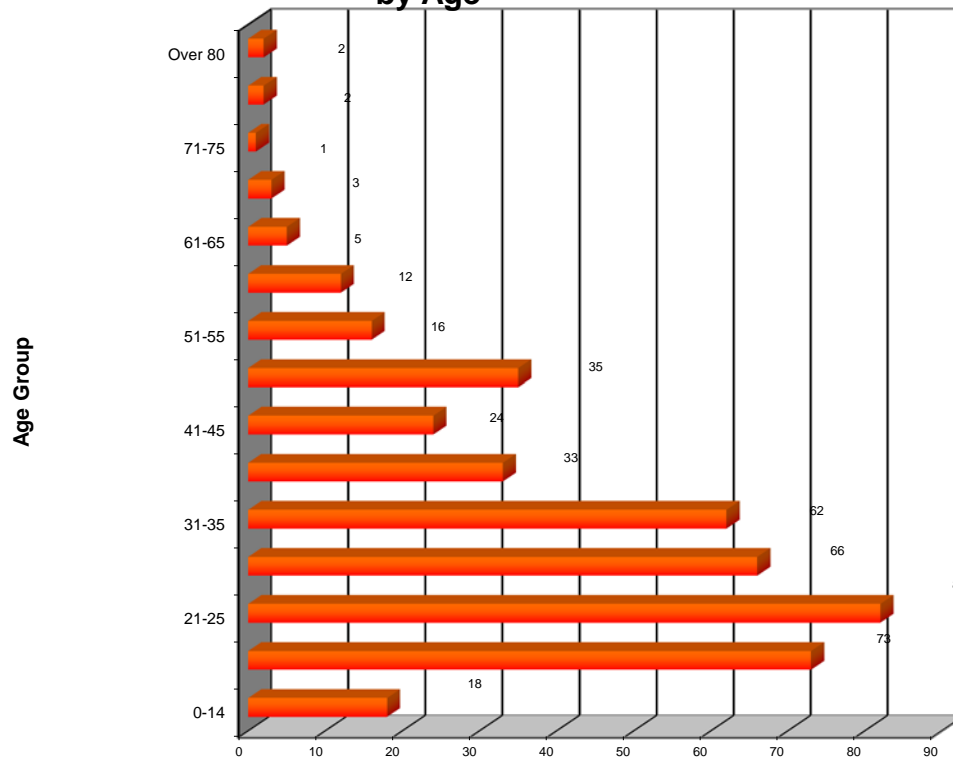


Total Deaths - 434

Homicides 5 Year Comparison 2009 - 2013

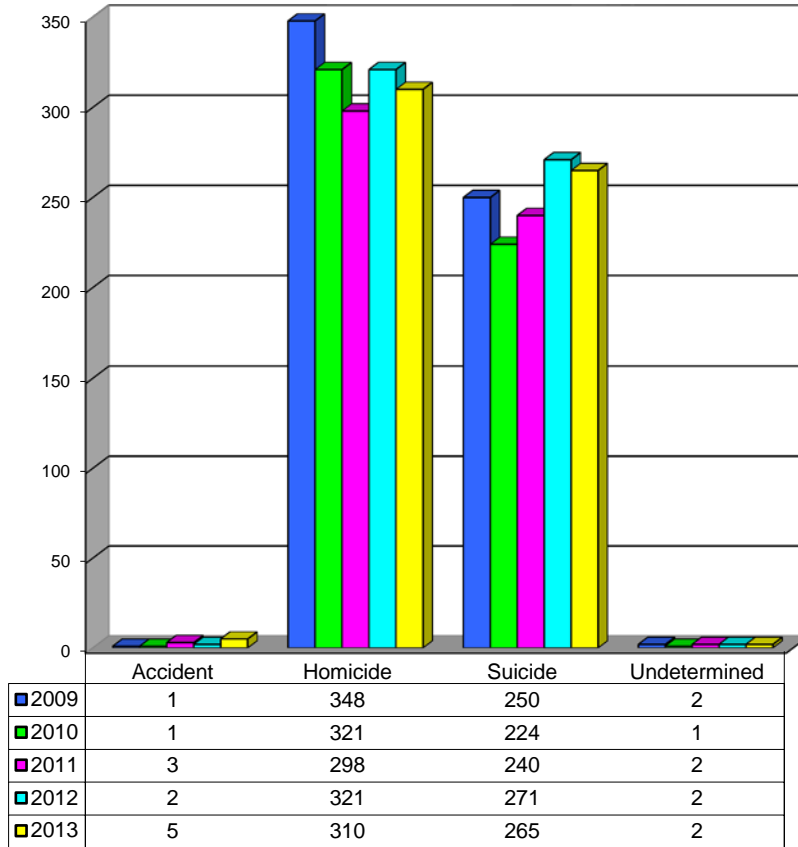


2013 Homicide Deaths by Age

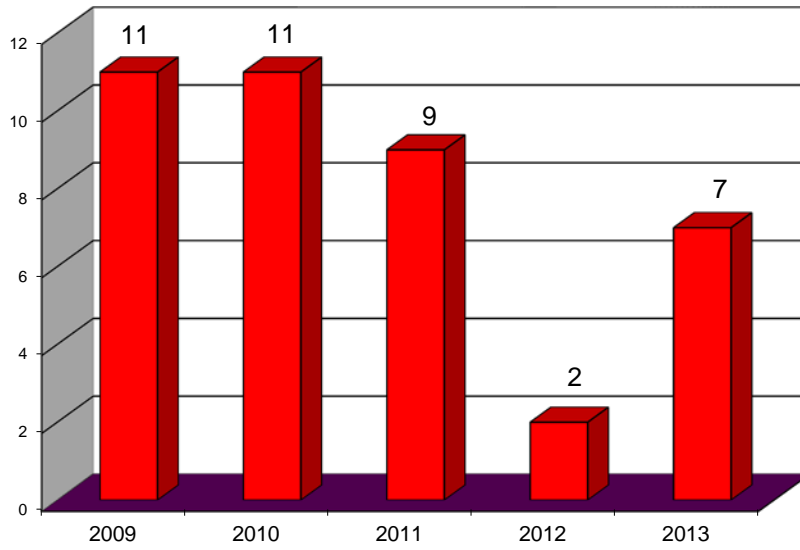


Total Deaths - 434

Firearm Deaths 2009 - 2013

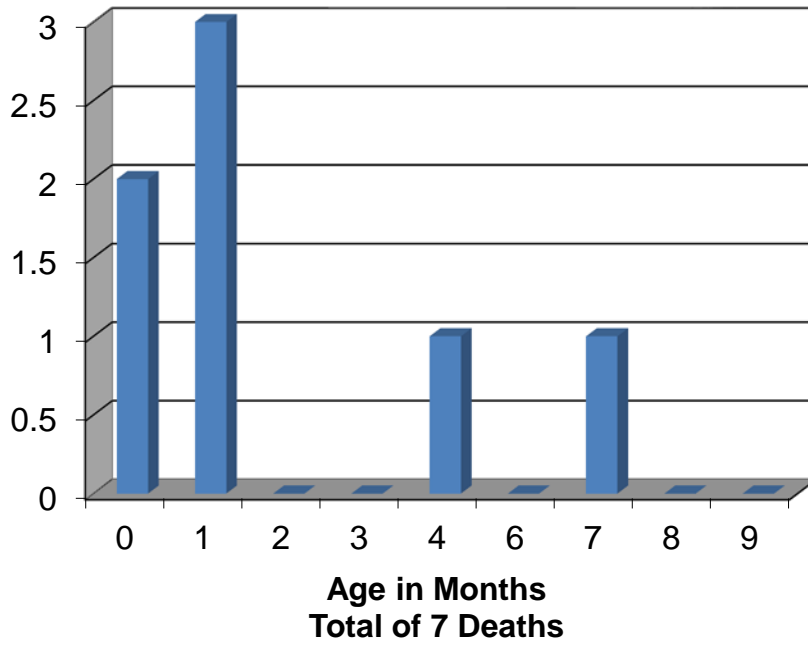


SIDS Deaths 2009 - 2013 Comparison

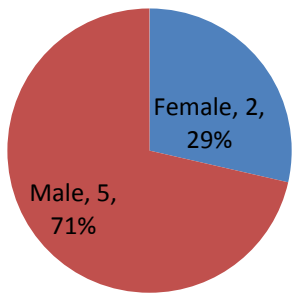


Sudden Infant Death Syndrome - 2013

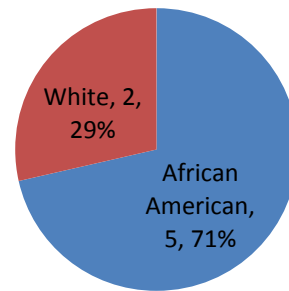
Classified by Age



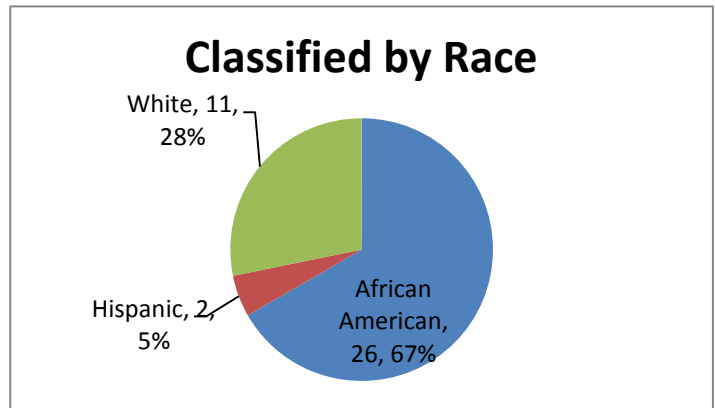
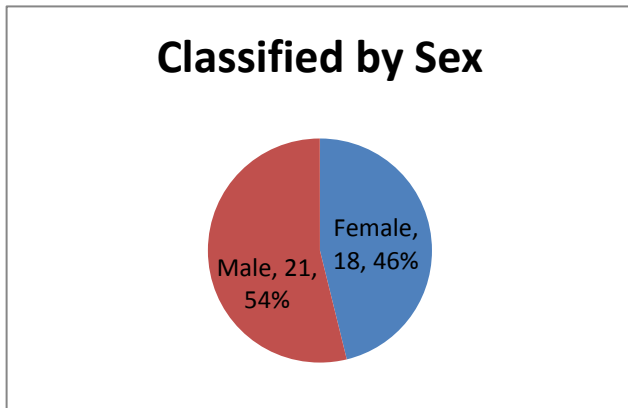
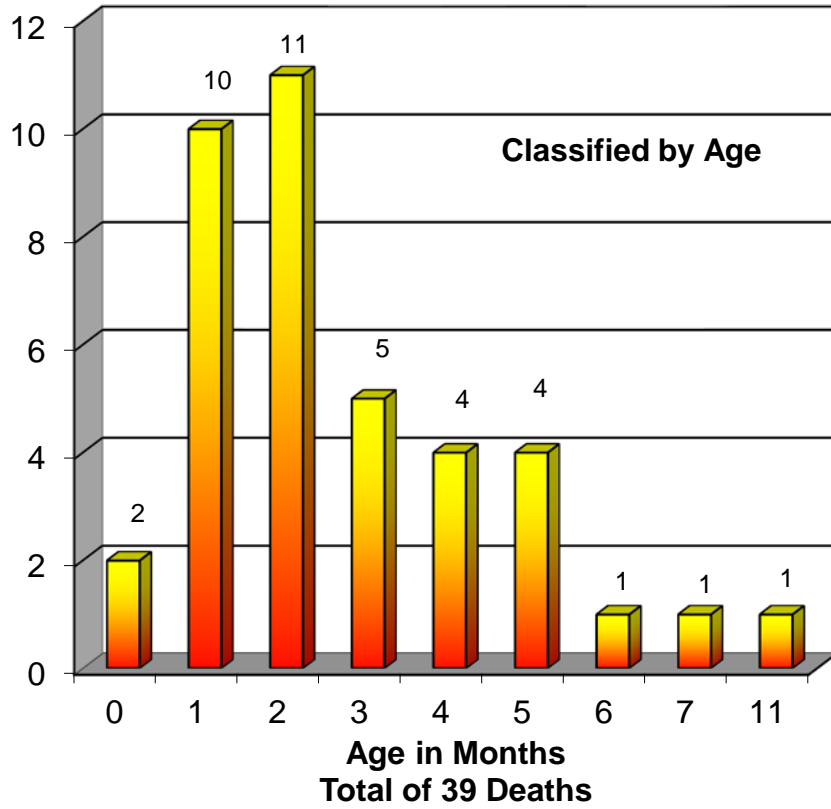
Classified by Sex



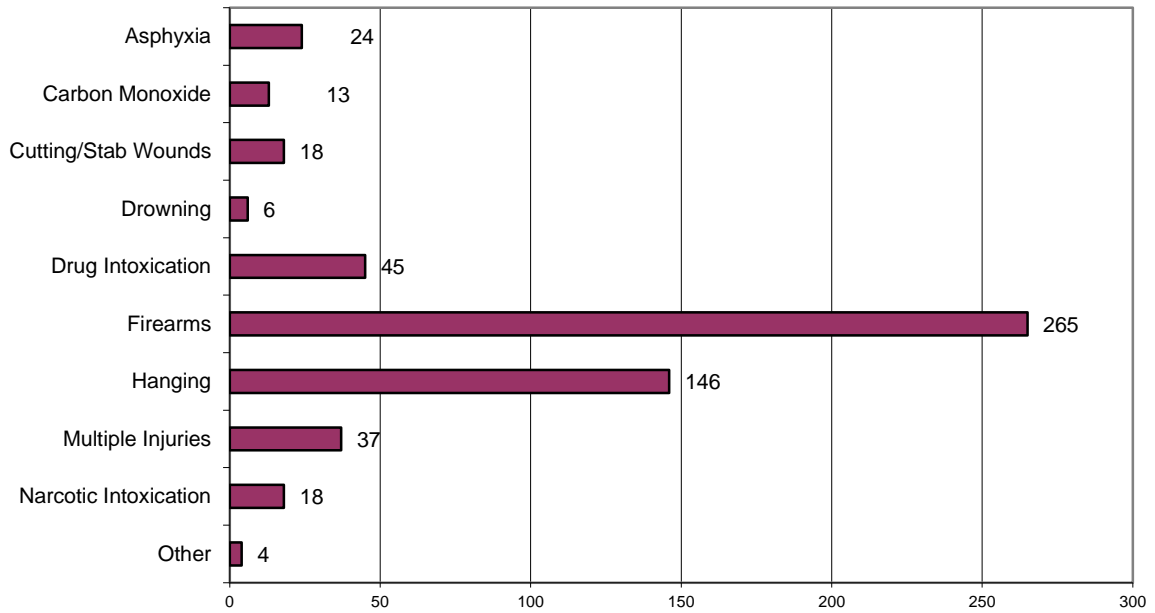
Classified by Race



Sudden Unexplained Death in Infancy - 2013

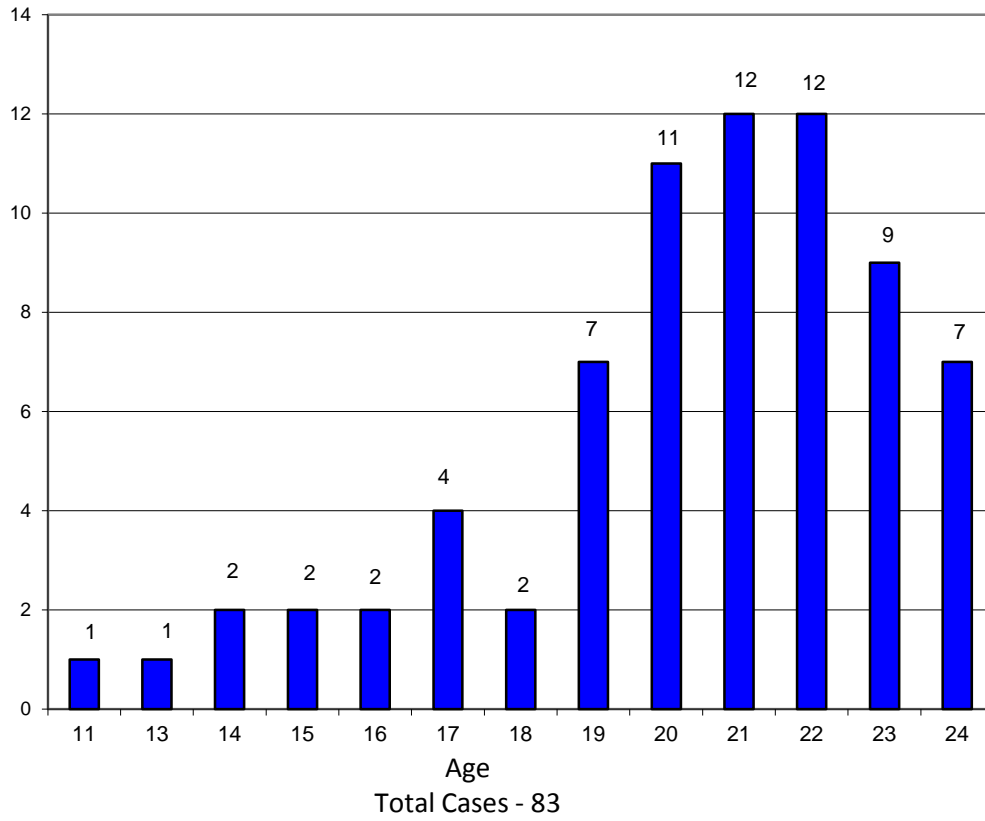


2013 Suicide Deaths Classified by Cause of Death

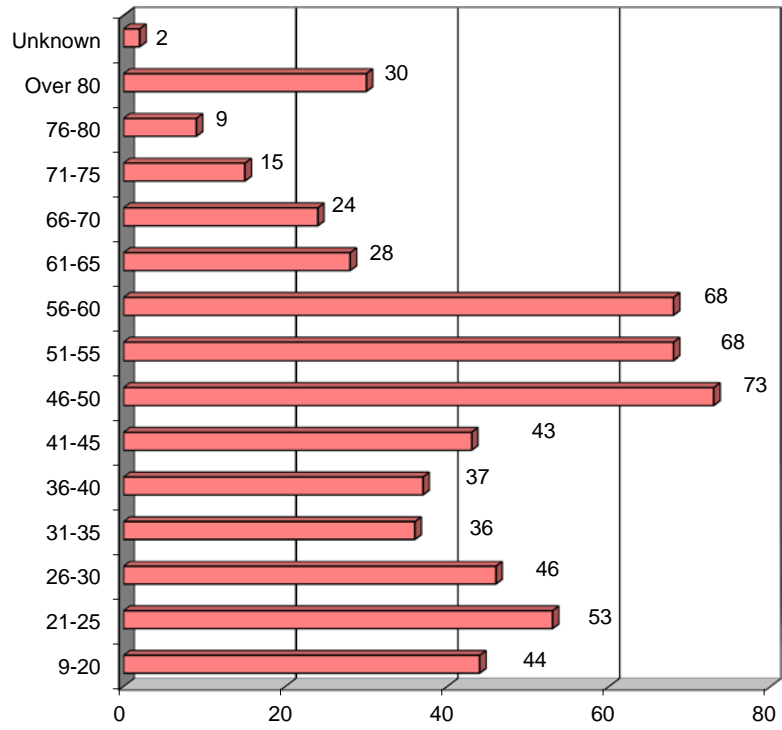


Total Cases - 576

**2013 Youth Suicides
25 Years of Age and Under**

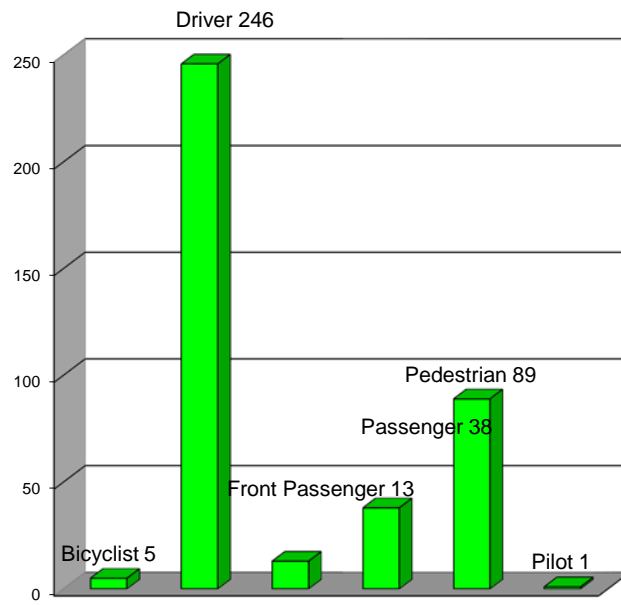


2013 Suicide Deaths by Age



Total Deaths - 576

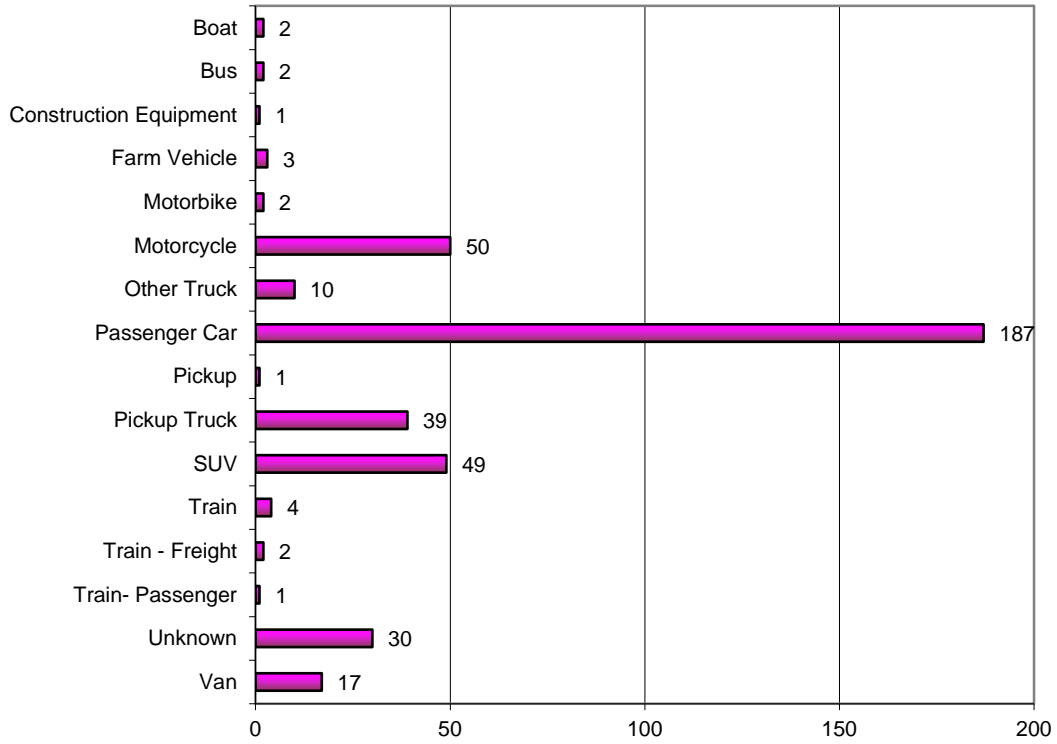
2013 Transportation Accidents* Classified by Activity



*Includes motor vehicles, boats, planes, bicycles and trains

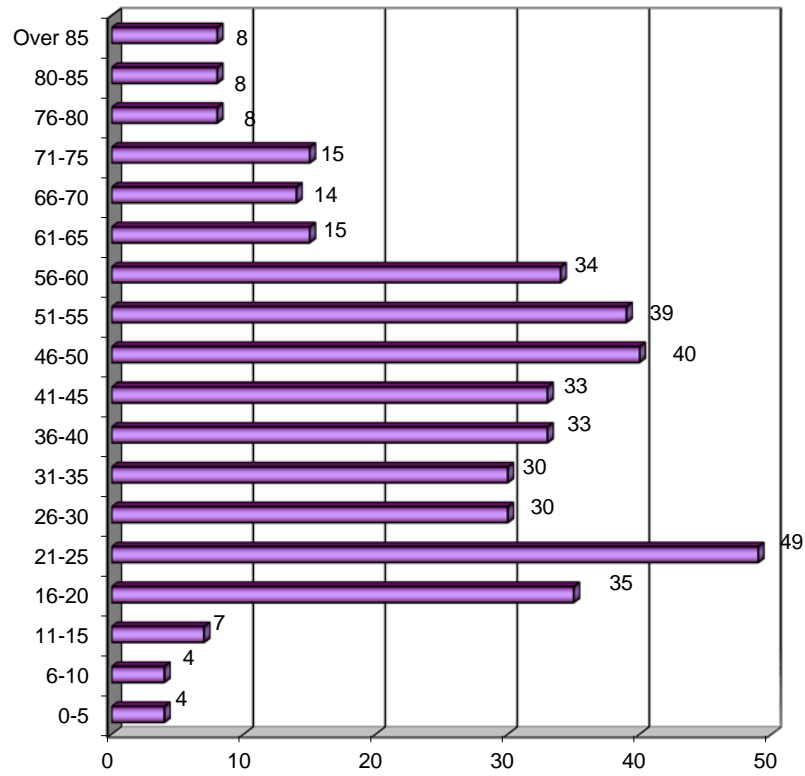
Total Cases - 406

2013 Transportation Deaths Type of Vehicle



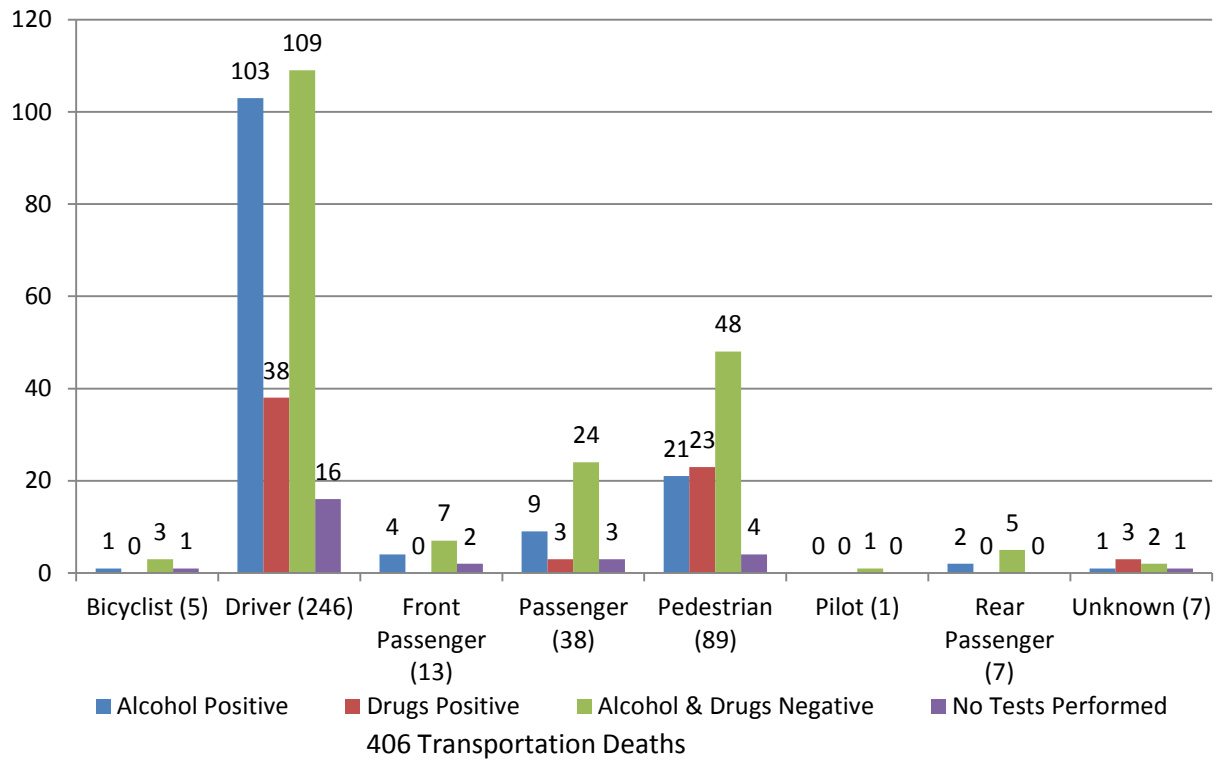
Total Cases - 406

2013 Transportation Deaths by Age

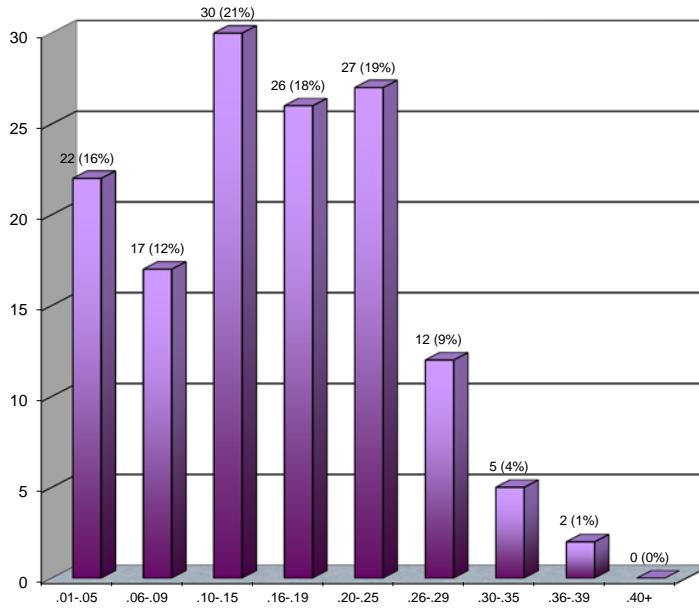


Total Cases - 406

2013 Transportation Accidents Alcohol/Drug Results



**2013 Transportation Deaths
Blood Alcohol Concentration in 141 Cases
37%* Tested Positive**



406 Transportation Deaths
238 Negative for Alcohol
27 No Testing Performed

*Percent based on total cases tested for alcohol

ADDENDUM

Miscellaneous Data

1. Number of autopsies 2,936
Number of partial autopsies 901
2. Organ donations 78
3. Unclaimed bodies released to State Anatomy Board 66
4. Exhumations 0
5. Bodies transported to the OCME 4,086