

# Maryland Medicaid Advisory Committee

## Presentation on Maryland's 2016 Annual Oral Health Legislative Report

March 27, 2017

# Maryland Medicaid's Dental Program: Overview

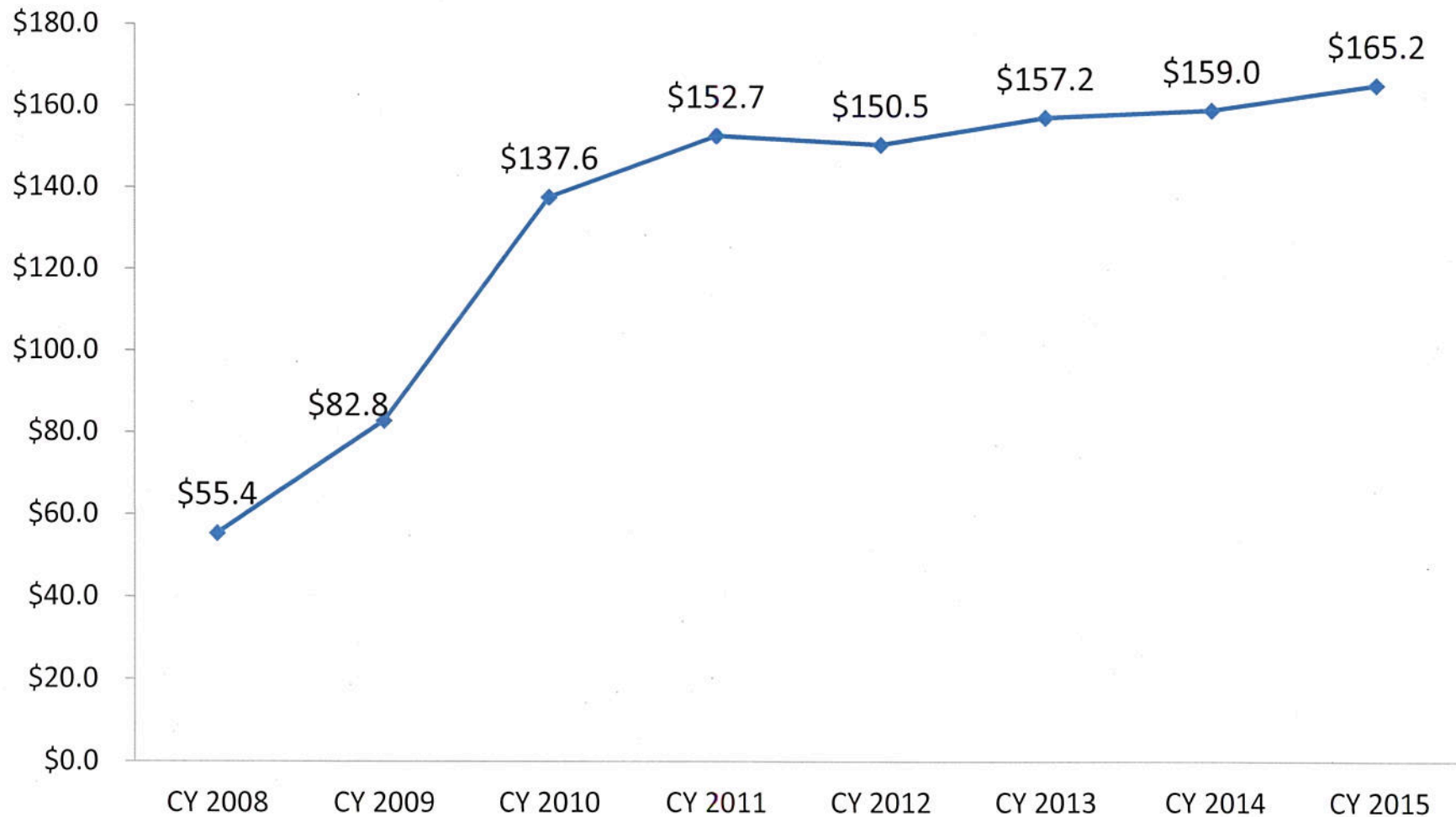
---

- Maryland Medicaid's Dental Program is called Maryland Healthy Smiles (MHSDP)
- MHSDP serves pregnant women and children enrolled in Medicaid, as well as adults in the Rare and Expensive Case Management Program (REM).
- In Dec 2013, Medicaid implemented its Dental Home Pilot statewide.
- All participants are assigned a Dental Home upon enrollment in MHSDP.
- In CY 2015, 519,881 members had a dental home assignment
- Of those, 213,303 members or 44.5% received at least one dental service

Maryland Medicaid spending on dental has increased dramatically since 2008, totaling \$165.2 million in 2015.

---

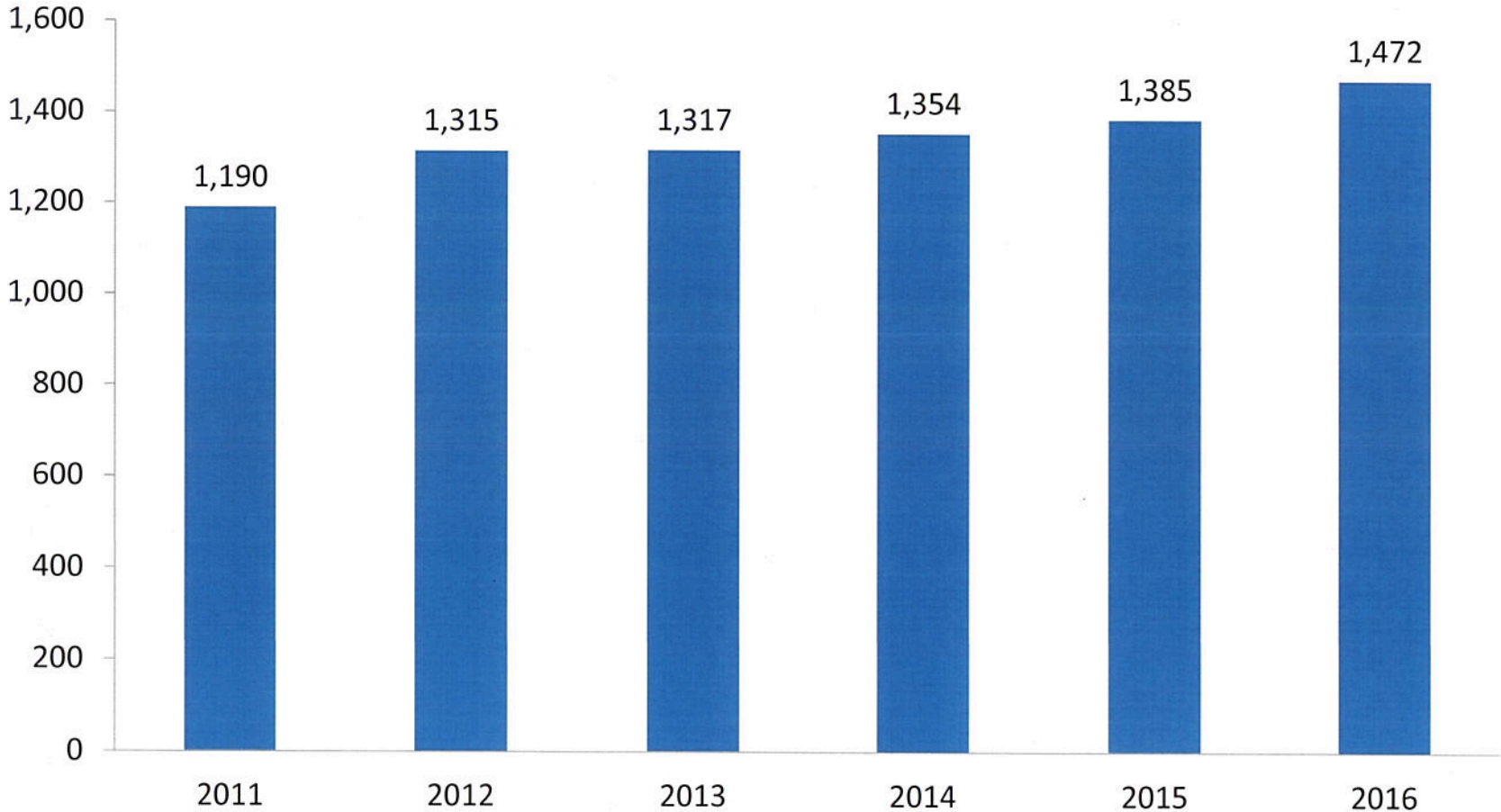
**Medicaid Dental Expenditures (millions) 2008-2015**



The number of dentists serving Medicaid patients has been increasing since 2011 as Maryland has been working to improve access to dental care.

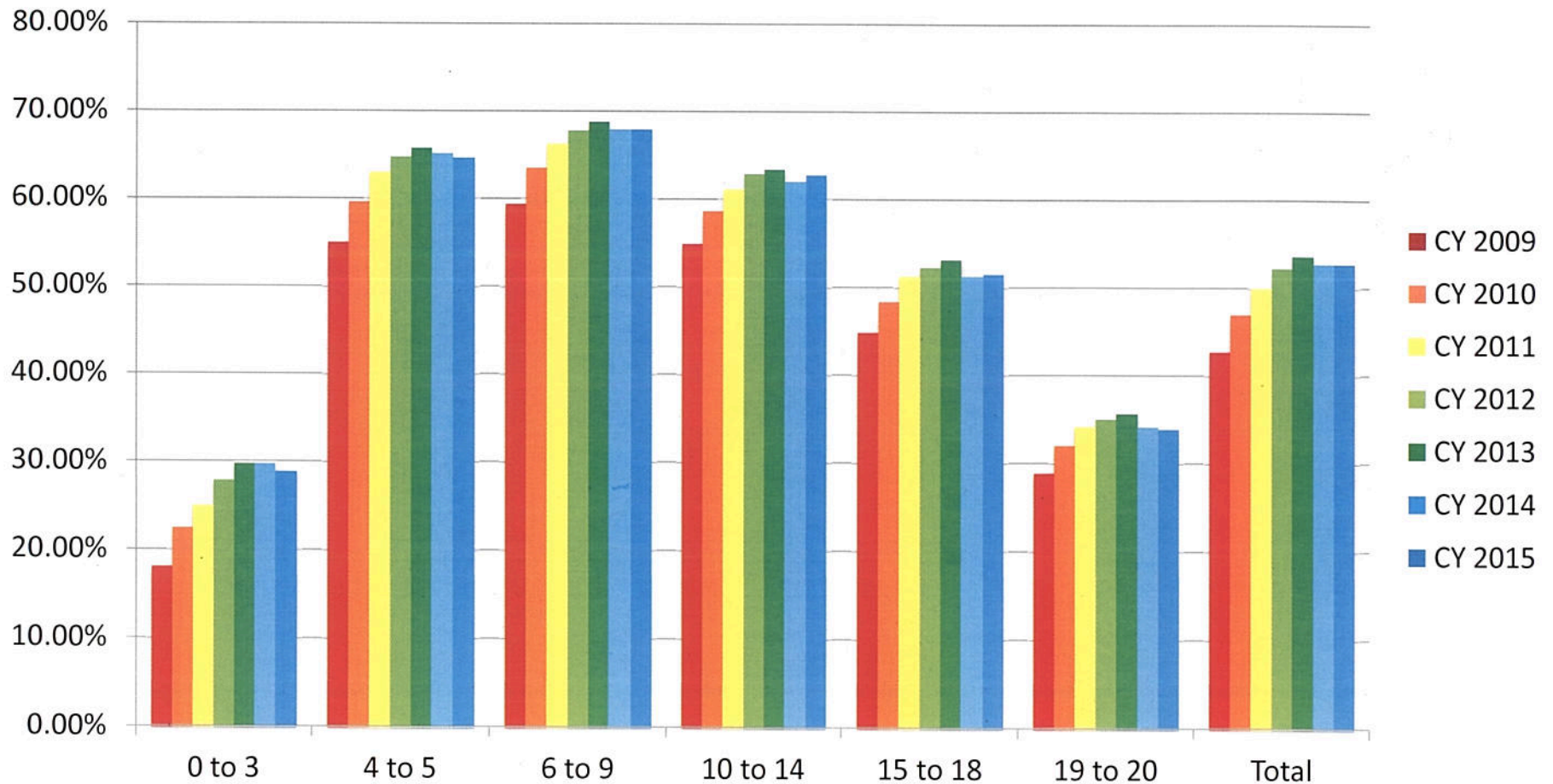
---

**Number of Medicaid Dentists 2011 - 2016**



The total percentage of children enrolled in Medicaid who had at least one dental encounter has increased by 10% since 2009.

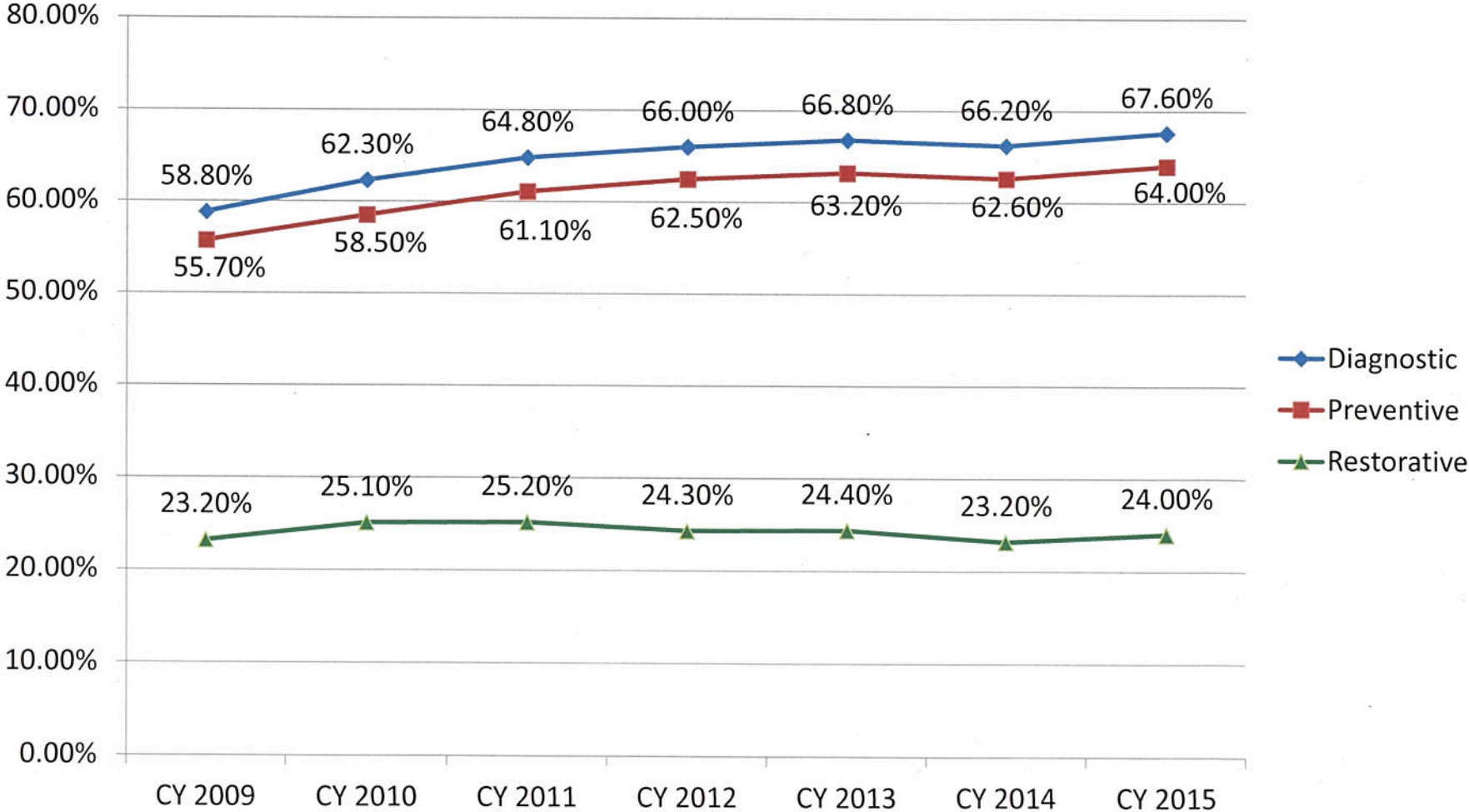
**Percentage of Children who had at Least One Dental Encounter by Age Group, Enrolled for Any Period in Medicaid**



\*Most children ages 0-3 are not expected to use dental services

The total percentage of children enrolled in Medicaid who received diagnostic or preventative treatments in 2015 rose to 67.6% and 64.0%, respectively, or 8.8% and 8.3% since 2009.

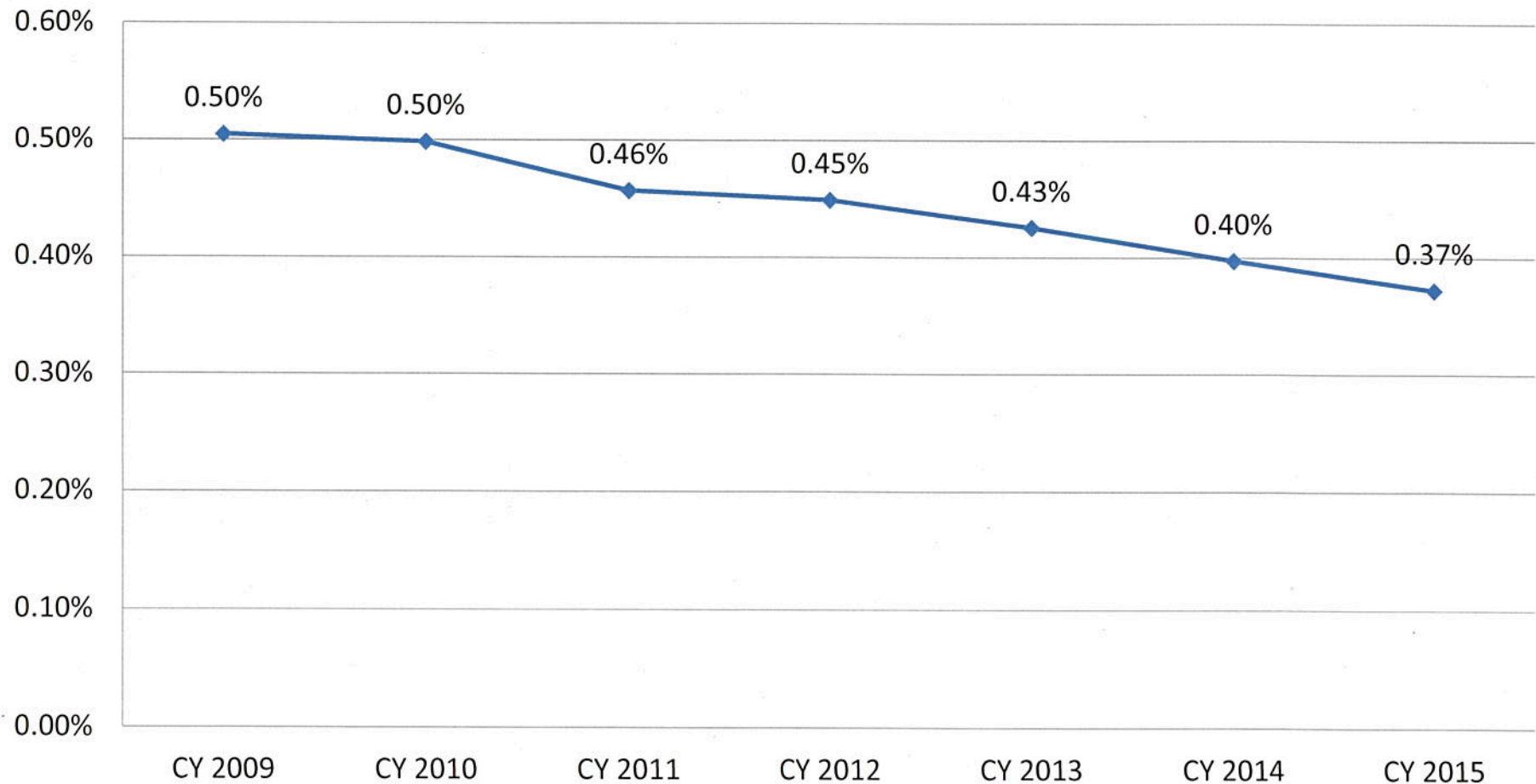
Percentage of Children Receiving Dental Services by Type of Service



The percentage of children with ER visits relative to the total Medicaid population eligible for dental services remains at less than one percent.

---

**Percent of Enrollees Ages 0 - 20 Enrolled for Any Period who had an ER Visit with a Dental Diagnosis**



# Maryland Medicaid's Dental Program: A National Perspective

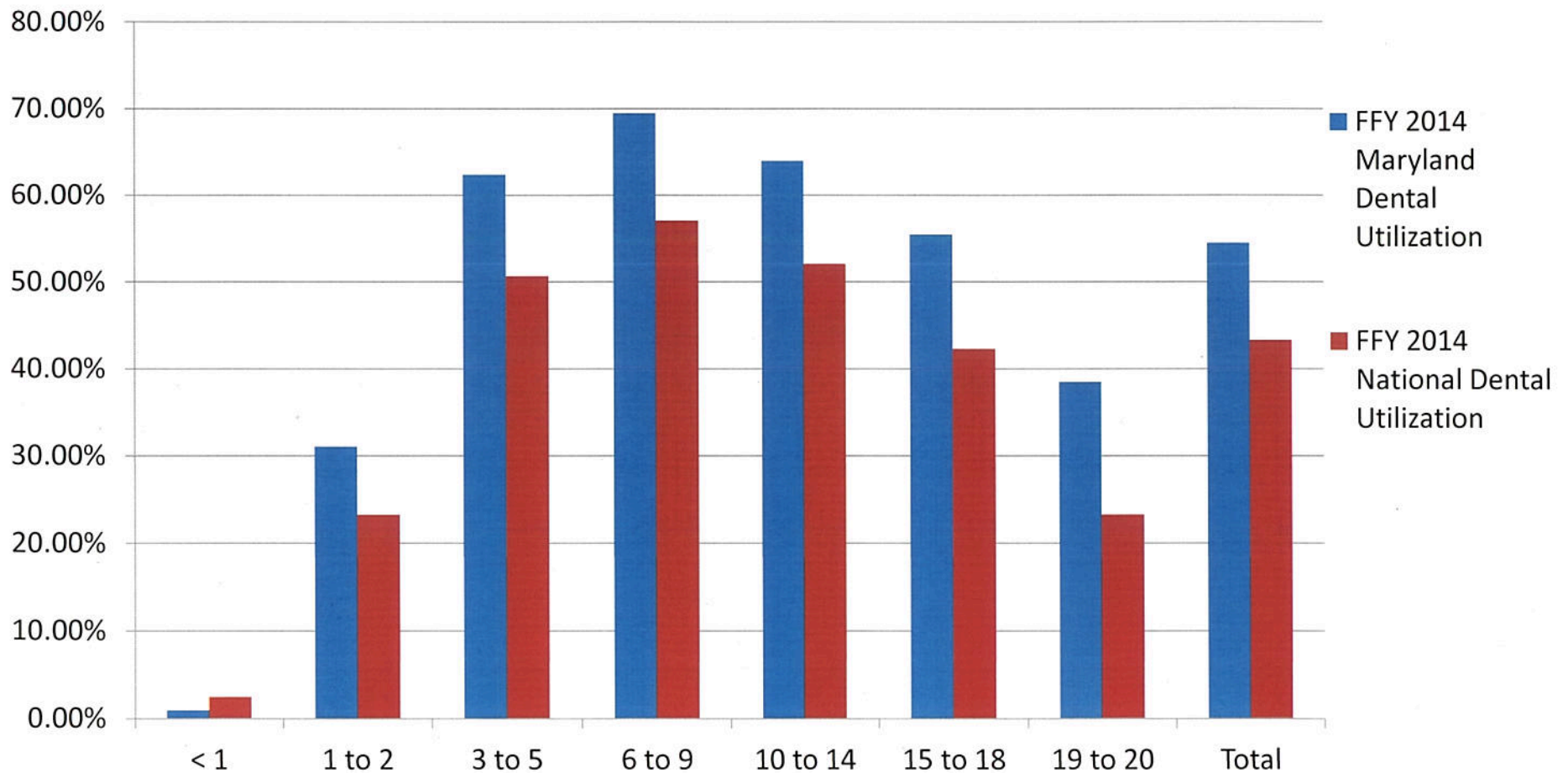
---

- In recent years, MD has been recognized by CMS, the Pew Center, and others as a national leader in access to oral health services.
- CMS Annual EPSDT Report for FFY 2014 & 2015 demonstrates that dental utilization for children in MD continues to outpace the national average.
- Maryland was one of 15 states to meet the first-year CMS Oral Health Initiative goal in preventive pediatric dentistry.
- For CY 2015, Maryland remained above the target federal goal



In FFY'14, the percentage of Maryland children enrolled in Medicaid who had at least one dental encounter outperformed the National average across all age groups.

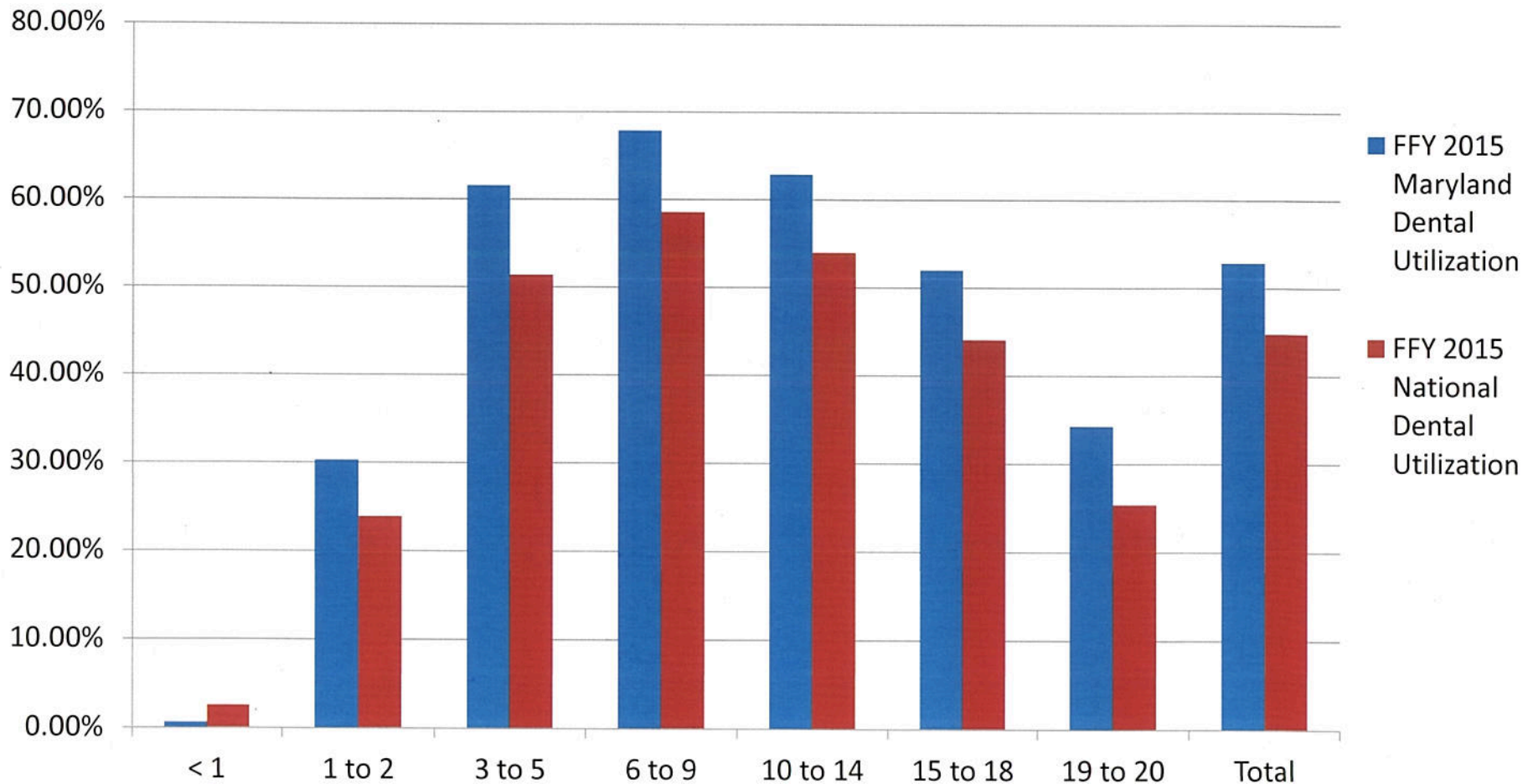
**Percent of Total Eligibles by Age Group who had any Dental Services, Enrolled for any Period**



\*Most children ages 0-3 are not expected to use dental services

In FFY'15, the percentage of Maryland children enrolled in Medicaid who had at least one dental encounter outperformed the National average across all age groups.

**Percent of Total Eligibles by Age Group who had any Dental Services, Enrolled for any Period**

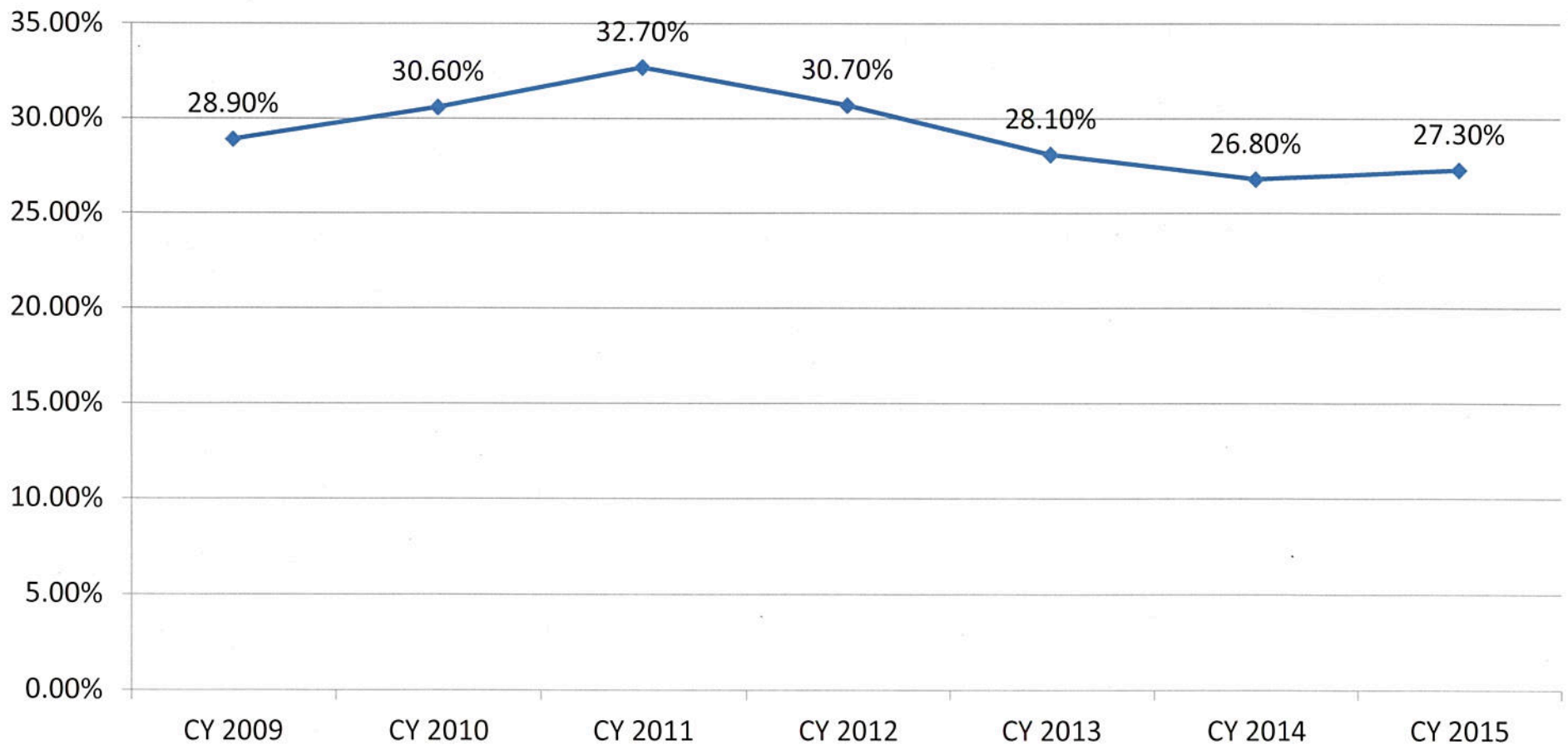


\*Most children ages 0-3 are not expected to use dental services

In 2014, Over 30,000 Pregnant Women (ages 14+) were eligible to receive dental services through the MHSDP with approximately 27% receiving at least one dental service in 2015.

---

**Percentage of Pregnant Women Receiving Dental Services Enrolled in Medicaid for Any Period**



# Maryland Medicaid's Dental Program: Adults ages 21-64

---

- In 2014, Medicaid eligibility in Maryland was expanded for low-income families and adults under age 65.
- More than 300,000 additional Marylanders have gained Medicaid coverage
- While adults are, generally, not eligible to receive dental benefits through MHSDP, 7 of Maryland's MCOs do offer a limited dental benefit to adult participants.
- In 2015, MCOs paid \$14.4 M to cover dental services for adult HealthChoice participants.

# Maryland Medicaid's Dental Program: Looking Forward

---

- In January 2016, Scion Dental replaced DentaQuest as the State's single dental ASO, responsible for all dental services for children, pregnant women, and REM program adults.
- Scion has proposed a comprehensive provider outreach program to encourage non-participating dentists to participate with Medicaid.
- In January 2016<sup>7</sup>, Maryland Medicaid began reimbursing dental services for former foster care children up to age 26 under HB 511/ SB 252