

**GREATER BALTIMORE MEDICAL CENTER
(GBMC) PATHWAYS:
AN IN-HOME AND NEIGHBORHOOD
APPROACH TO CREATING HEALTH EQUITY**

Karen Thompkins
Director of Community Partnerships

*“To every patient, every time, we will provide the care
that we would want for our own loved ones.”*

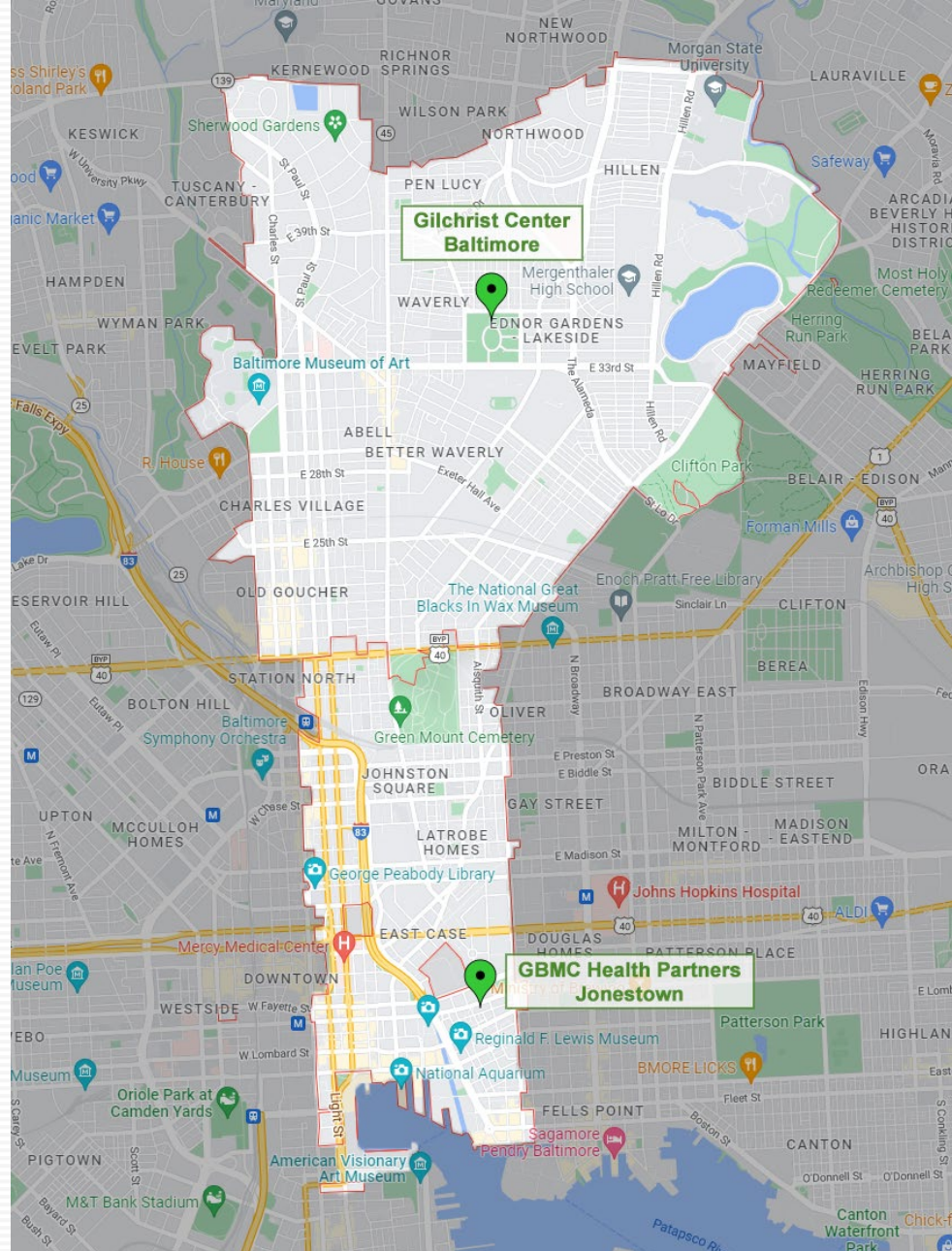
GBMC

ZIP CODES

21202

21218

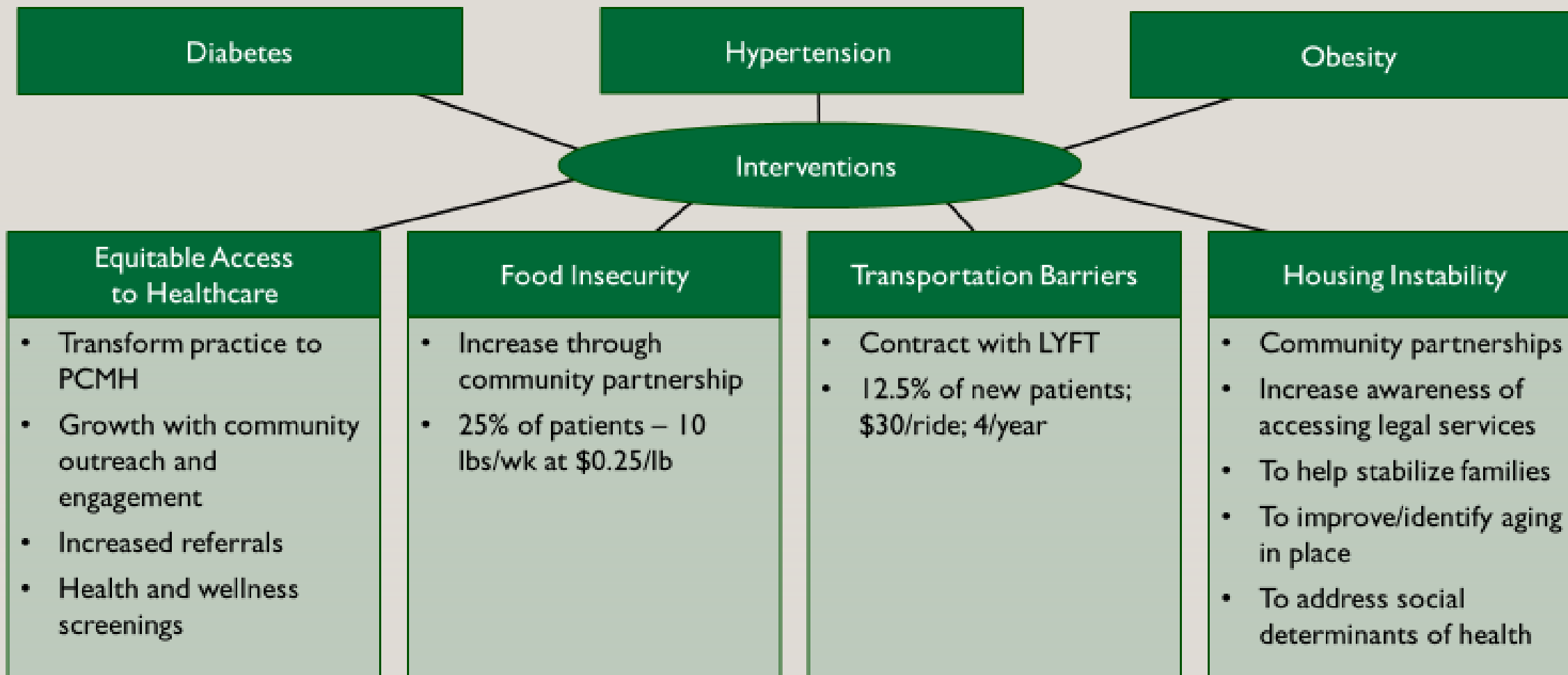
- 30,000+ residents
- Predominantly Black Americans, secondary Hispanic presence
- High rates of chronic disease
- Persistent socioeconomic and racial disparities



“To every patient, every time, we will provide the care that we would want for our own loved ones.”

GBMC

HEALTH DISPARITIES AND INTERVENTIONS

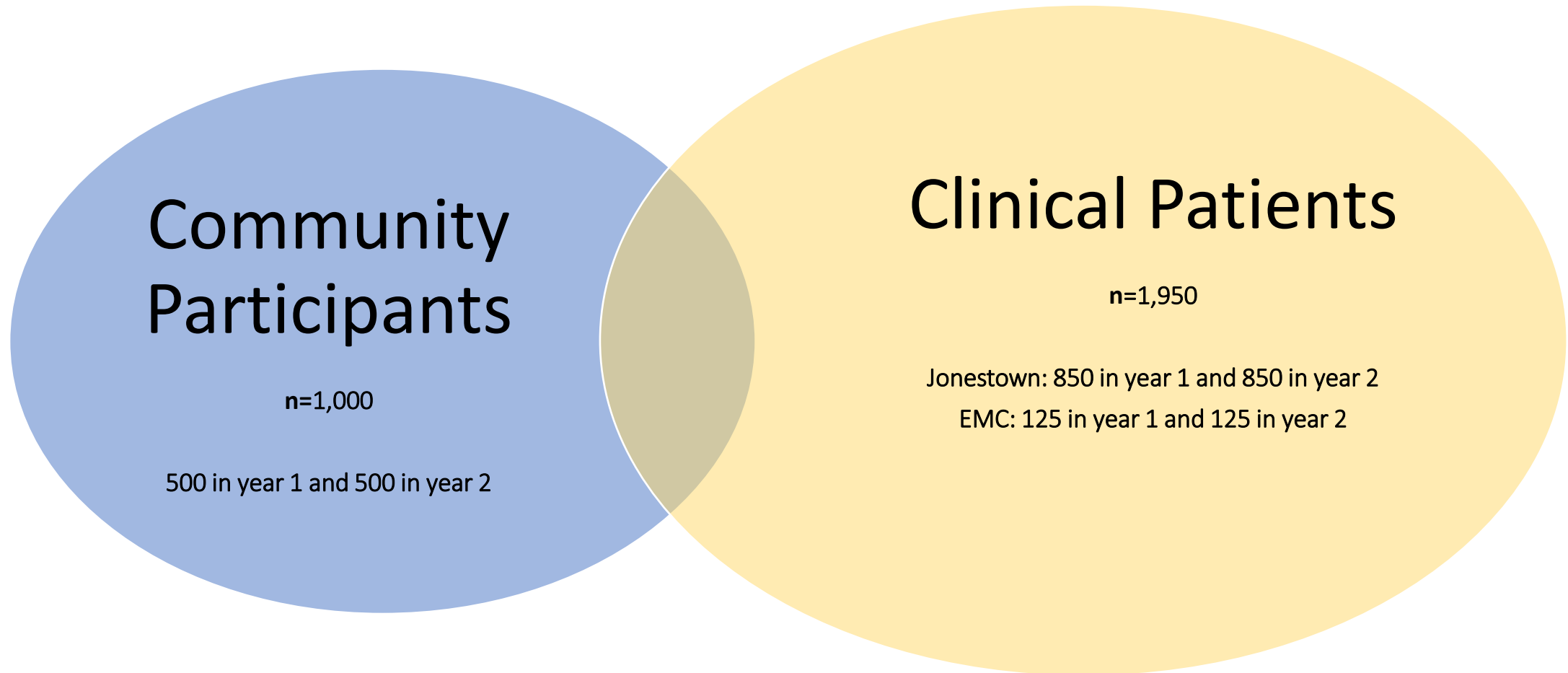


GBMC HEALTHCARE

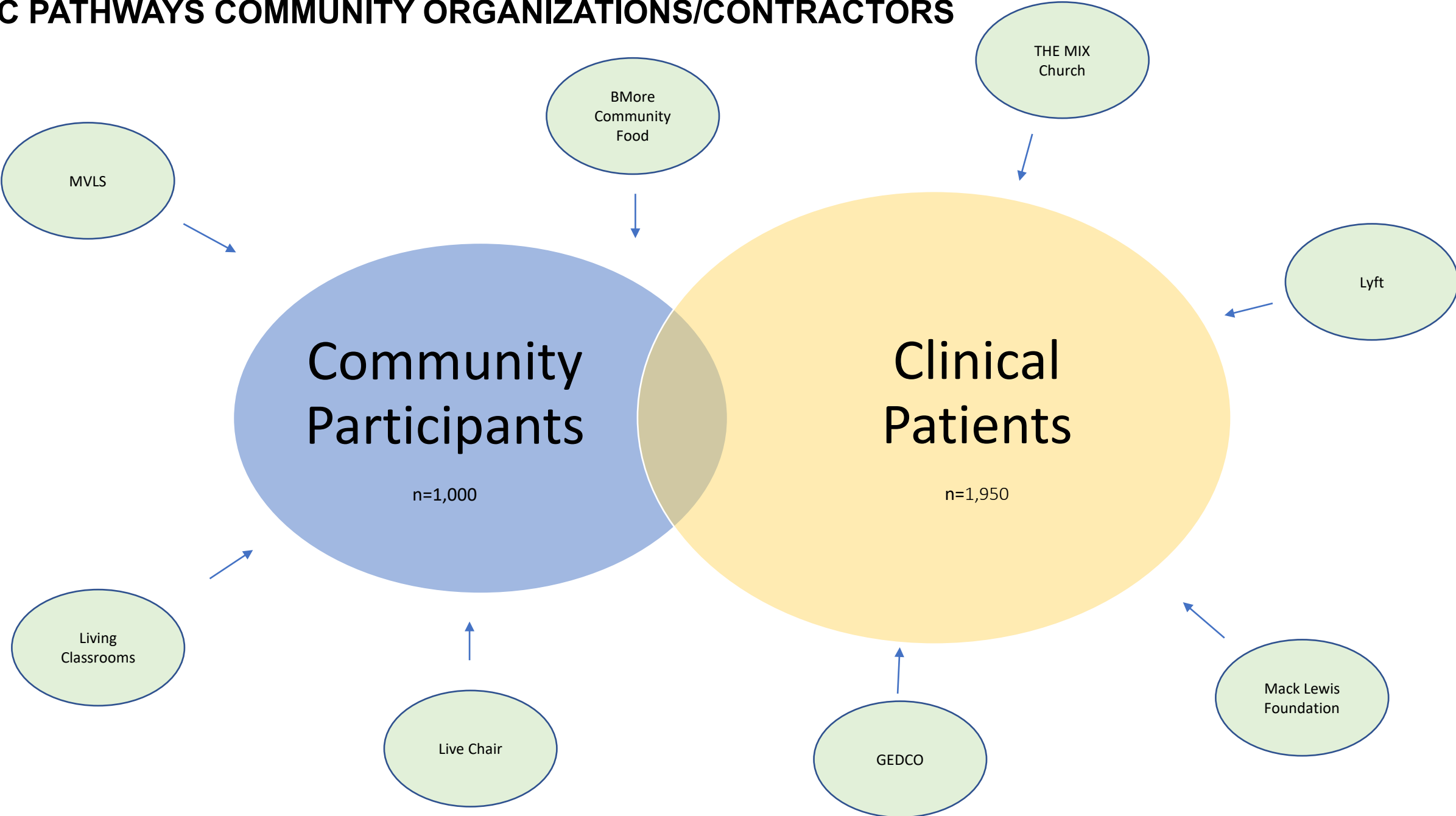
“To every patient, every time, we will provide the care that we would want for our own loved ones.”

GBMC

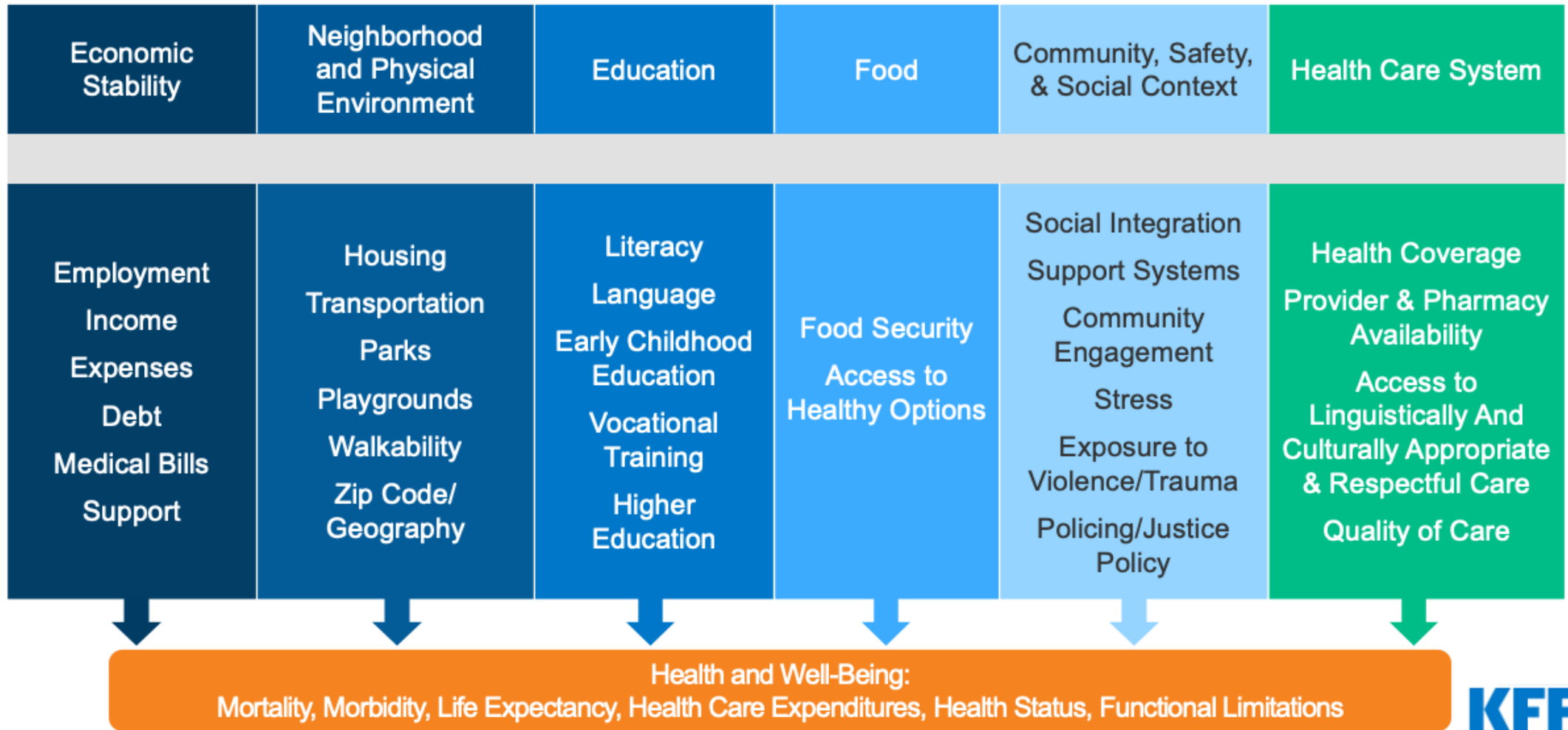
GBMC PATHWAYS POPULATION



GBMC PATHWAYS COMMUNITY ORGANIZATIONS/CONTRACTORS



Social Determinants of Health



“To every patient, every time, we will provide the care that we would want for our own loved ones.”

