

## **MyLIMS Online Application Configuration – (6/11/2014)**

The MyLims Website databases are located at:

Clinical/Production - <http://starlims.dhmh.md.gov/starlims10.dhmlabs.prod/>

Newborn Production - <http://starlims.dhmh.md.gov/starlims10.mynbs/>

### **Window 7 Operating Systems Instructions:**

Using the online MyLims/Starlims program with a Windows 7 computer operating system, due to issues related to its Internet Explorer and .NET Framework versions, involves setting up the computer with XP Mode as follows.

**You need to have administrative rights on your computer to install and use XP Mode and the MyLims program.**

This means that your computer logon name is listed within your computer's Computer Management, Groups, Administrators window.

Be sure to turn off Windows updates when setting up XP Mode.

See document below regarding installing XP Mode on a Windows 7 computer operating system, which will allow you to then use the Starlims/MyLIMS(webversion) program within its XP Mode. **The website has made some recent changes to the XP Mode download site since this document was written.**

Once XP Mode is installed, you would install the MyLIMS program within XP Mode via the MyLIMS Requirements screen and then use the program just as you did when you had only Windows XP as your computer operating system.

There are three components to the Requirements configuration that you may need and in this order:

.NET Framework 1.1 (normally, already installed with XP Mode, but occasionally, it needs to be installed!!), Crystal Reports viewer, and a script for Runtime .NET.

You will also need installed **within XP Mode** the attached barcode font into the XP Mode's Control Panel, Fonts directory and Adobe Reader for viewing release reports.

Once you have installed the necessary items you will need to close the browser and then reopen it to log into the MyLims program. Sometimes a re-boot of the machine is necessary to fully update the installed items.

Many users who have upgraded to Windows 7 have configured their computers in this manner and have reported satisfactory use of the MyLIMS program.

We are not aware of any problems resulting from having XP Mode installed on Windows 7 computer operating systems.

Have your tech support contact us if they encounter any problems configuring XP Mode.

## Terminal Services Configuration Instructions:

An alternative setup configuration would involve the use of Windows Server 2003 and Terminal Services.

**NOTE: The associated server computer and software for this configuration are the responsibility of the local program and will not be supplied by the Laboratories Administration.**

The MyLims application can be installed on a Windows Server 2003 computer and then accessed and run from an individual user's computer via Terminal Services, a remote access software component of the Windows operating systems. More than two remote accessing client users requires the separate additional purchase of Terminal Services licenses from Microsoft. The current one-time purchase price of five Terminal Services client licenses is approximately, \$199.00.

\*\*\*Uninstalling Internet Explorer 8.0\*\*\*

If you have Internet Explorer 8.0 installed, to use MyLims you must uninstall Internet Explorer 8.0 to your previous version according to the following Microsoft link and based on your computer's operating system:  
<http://support.microsoft.com/kb/957700>

\*\*\*

## Install and use of Windows XP Mode in Windows 7

Please use the link below:

<http://windows.microsoft.com/en-us/windows7/install-and-use-windows-xp-mode-in-windows-7>

Note: [Windows XP Mode must be installed using Administrators rights.](#)

Applies to these editions of Windows 7  
Professional, Ultimate, Enterprise

How does Windows XP Mode work?

Before you begin, Installing and using Windows XP Mode **Important**

After April 8, 2014, technical support for Windows XP and Windows XP Mode will no longer be available, including updates that help protect your PC. This means that if you continue to use Windows XP or use Windows XP Mode on a Windows 7 PC after support ends, your PC might become more vulnerable to security risks and viruses. Therefore, to keep your Windows 7 PC secure after April 8, 2014, we recommend that you only use Windows XP Mode if your PC is disconnected from the Internet. Learn more about Windows XP end of support. Using Windows XP Mode, you can run programs that were designed for Windows XP on computers running Windows 7 Professional, Enterprise, or Ultimate editions. Windows XP Mode isn't supported on Windows 8.

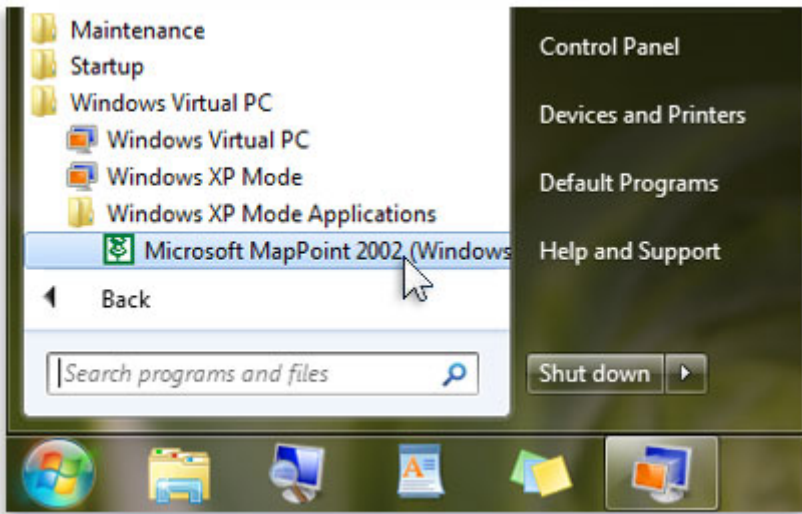


Programs can run in both Windows XP Mode and in Windows 7.

### How does Windows XP Mode work?

Windows XP Mode works in two ways—both as a virtual operating system and as a way to open programs within Windows 7. It runs in a separate window on the Windows 7 desktop, much like a program, except it's a fully-functional, fully-licensed version of Windows XP. In Windows XP Mode, you can access your physical computer's CD/DVD drive, install programs, save files, and perform other tasks as if you were using a computer running Windows XP.


When you install a program in Windows XP Mode, the program appears in both the Windows XP Mode list of programs and in the Windows 7 list of programs, so you can open the program directly from Windows 7.



Programs installed in Windows XP Mode in the Windows 7 Start menu

The majority of programs compatible with Windows Vista and Windows XP run well in Windows 7. If a program doesn't, first try the Program Compatibility troubleshooter. It's included in all editions of Windows 7. For more information, see [Open the Program Compatibility troubleshooter](#). Some hardware and devices that work in Windows 7 might not be detected or work in Windows XP Mode.

Windows XP Mode was primarily designed to help businesses move from Windows XP to Windows 7. It isn't optimized for graphic-intensive programs such as 3D games, nor is it well suited for programs with hardware requirements such as TV tuners.

If you're playing music or video in Windows XP Mode using Windows Media Player, and you maximize or minimize the Windows XP Mode window, Windows Media Player will stop playing. To resume playback, click the Play button  in Windows Media Player.

### **Before you begin**

In order to use Windows XP Mode, you need to make sure your computer meets certain system requirements; otherwise Windows Virtual PC and Windows XP Mode won't work correctly, even though you might be able to download and install them. Before you begin, follow these steps:

Make sure you're running Windows 7 Professional, Enterprise, or Ultimate. To find out which edition of Windows 7 you're running, click the Start button , right-click Computer, and then click Properties.

### **Installing and using Windows XP Mode**

To use Windows XP Mode, you need to download and install Windows XP Mode, and Windows Virtual PC, the program that runs virtual operating systems on your computer.

When you install a program in Windows XP Mode, the program becomes available for use in both Windows XP Mode and Windows 7.

### **To download and install Windows XP Mode**

Go to the [Windows XP Mode](#) page in Download Center.

Under Quick Details, select your language.

Click Continue and follow the instructions on the screen to validate your copy of Windows 7.

Select a version of Windows XP Mode to install and click Install.

**Note: Windows XPMode\_N versions don't include Windows Media Player.**

Click Run in your browser's message bar, and follow the instructions on the screen.

When setup is completed, click Finish.


### **To download and install Windows Virtual PC**

Go to the [Windows Virtual PC](#) page in Download Center

Under Quick Details, select your language.

Click Continue and follow the instructions on the screen to validate your copy of Windows 7.

Select a version of Windows Virtual PC to install and click Install.

Note: The x64 version works with 64-bit versions of Windows 7. The x86 version works with 32-bit versions of Windows 7. To find out if your PC is running 32- or 64-bit Windows 7, click the Start button , right-click Computer, and then click Properties. 32-bit and 64-bit information appears next to System type.


Click Run in your browser's message bar, and follow the instructions on the screen.

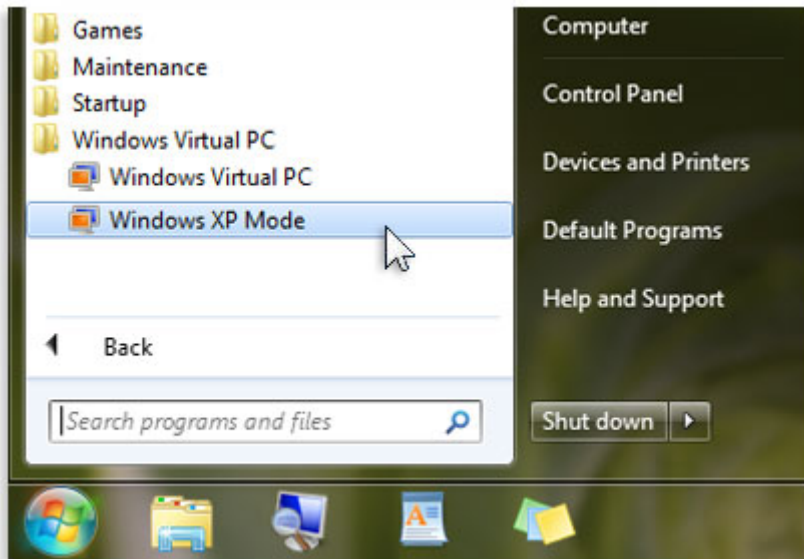
Click Yes to install Update for Windows (KB958559).

If you accept the license terms, click I Accept.

After installation is complete, click Restart Now to restart your computer.

### **To set up Windows XP Mode for first use**

Click the Start button , click All Programs, click Windows Virtual PC, and then click Windows XP Mode.



Windows Virtual PC and Windows XP in the list of programs

If you accept the license terms, click I accept the license terms, and then click Next.

On the Installation folder and credentials page, accept the default location where Windows XP Mode files will be stored, or choose a new location.

Type a password, **NOTE: Please use the user name as password This will avoid confusion:** type it again to confirm it, and then click Next.

On the Help protect your computer page, please turn off automatic updates, and then click Next. Click Start Setup. After setup is complete, Windows XP Mode opens in a separate window.

Warning

Antivirus software isn't included with Windows XP Mode. Even if your computer running Windows 7 already has antivirus software, you should also install antivirus software in Windows XP Mode to help defend your computer against viruses.