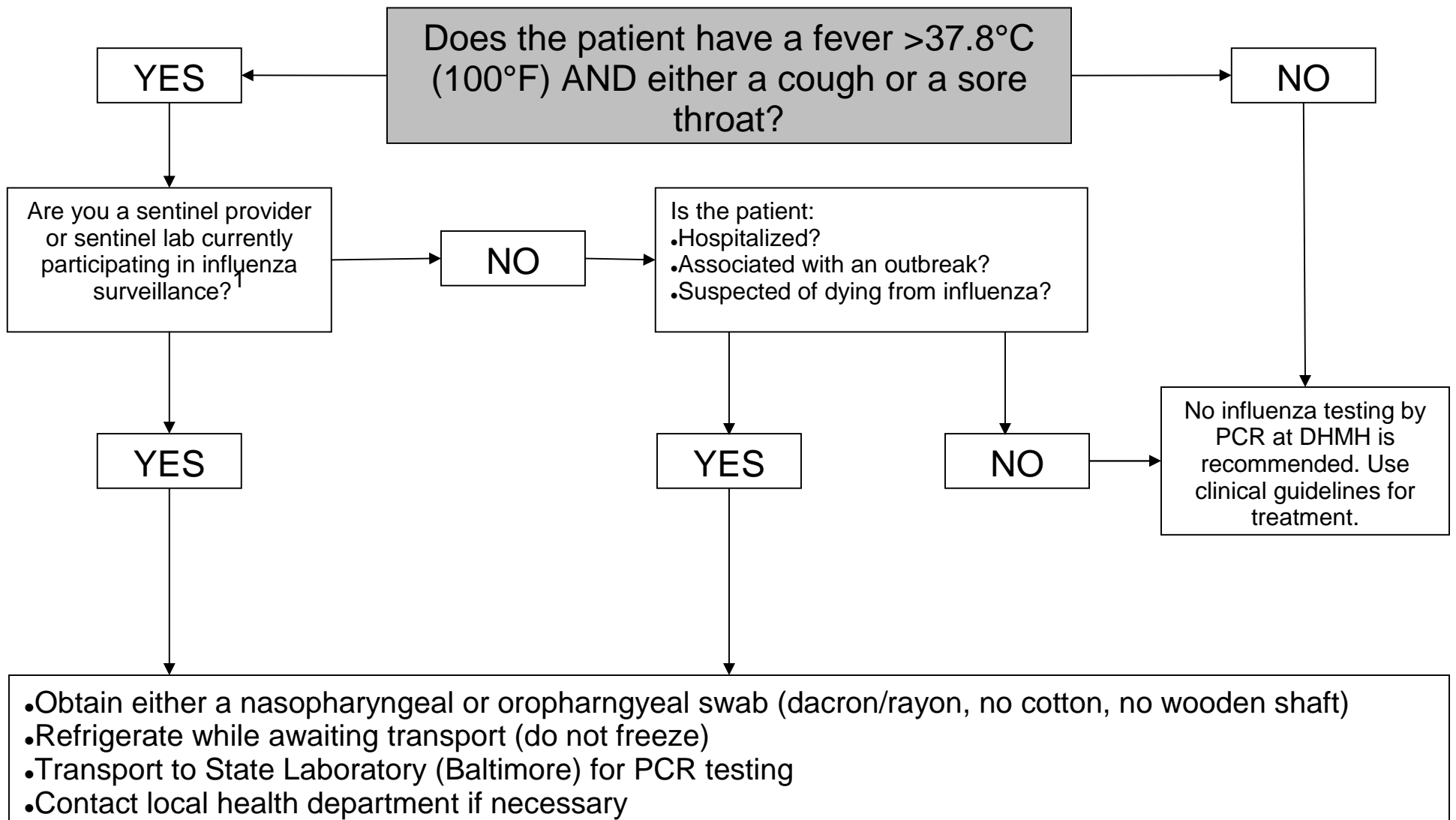


Guidance for specimen collection for influenza testing at State Laboratory 2010-11 Influenza Season



¹“Sentinel Providers” and “Sentinel Laboratories” are healthcare providers and clinical laboratories, respectively, who participate in the influenza surveillance program run by DHMH. Any providers interesting in participating may contact Rene Najera at 410-767-6235.