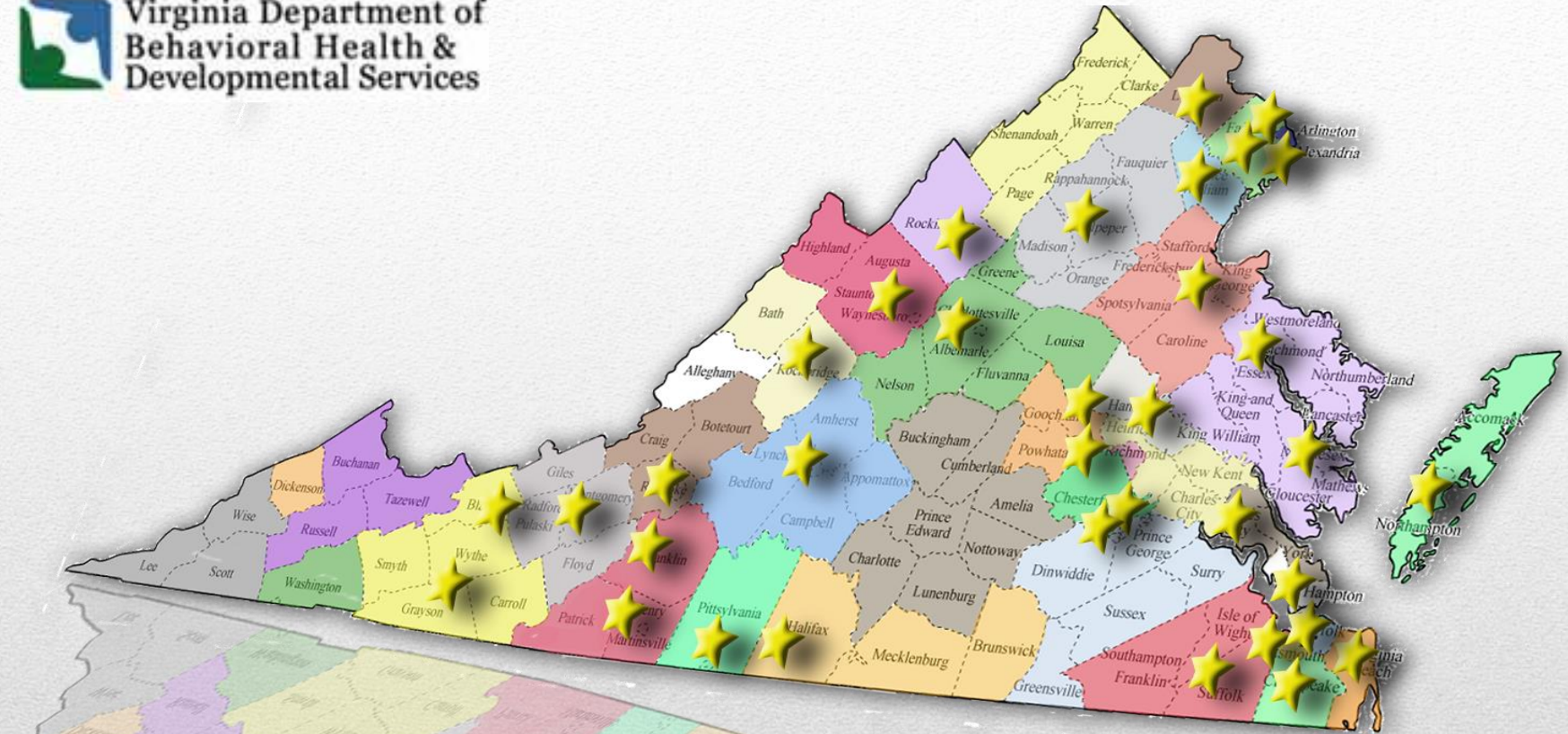




Virginia Department of
Behavioral Health &
Developmental Services



Growing CIT & Assessment Sites

Taking the Next Step

- **Why Receiving Centers?**
- A safe place for law enforcement to keep consumers out of criminal justice system
- Provides the ability for law enforcement to return quickly to patrol duties

We trained, now what?

- Requires the collaborative relationships that developed the CIT program
- Constant re-evaluation
 - Training Program
 - Receiving center program (if applicable)

How do we get there?

- **Different types of localities**
 - **Urban vs. Rural**
- **Hours of need**
- **Program Needs**

What do they look like?

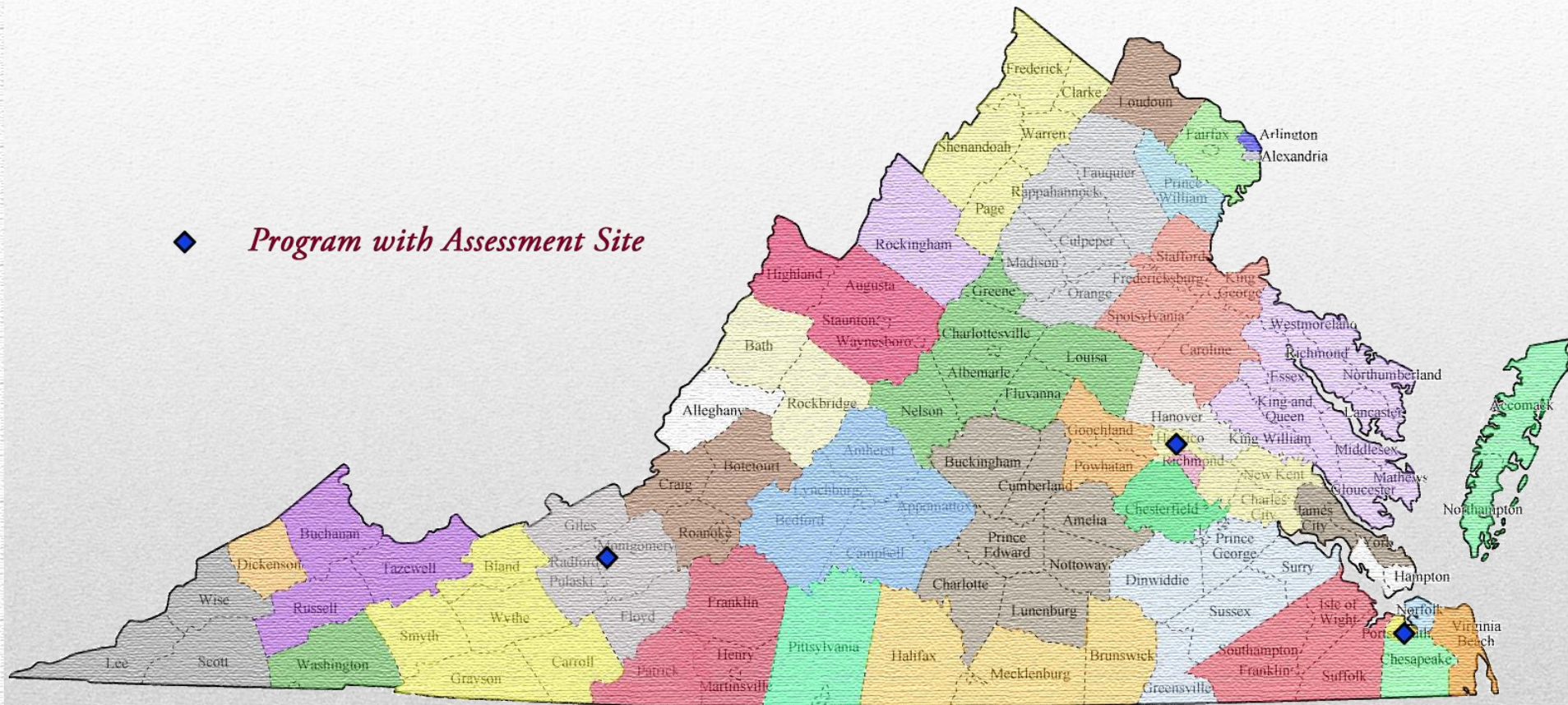
- **36 Assessment Site Locations**
32 Community Services Boards
- **Assessment Sites in areas covering about 78% of population.**
- **\$10.5 million allocated by General Assembly**
- **About \$285,000 average cost per site/year**

Overview

FY'13

The first General Assembly CITAS programs (3)

◆ *Program with Assessment Site*

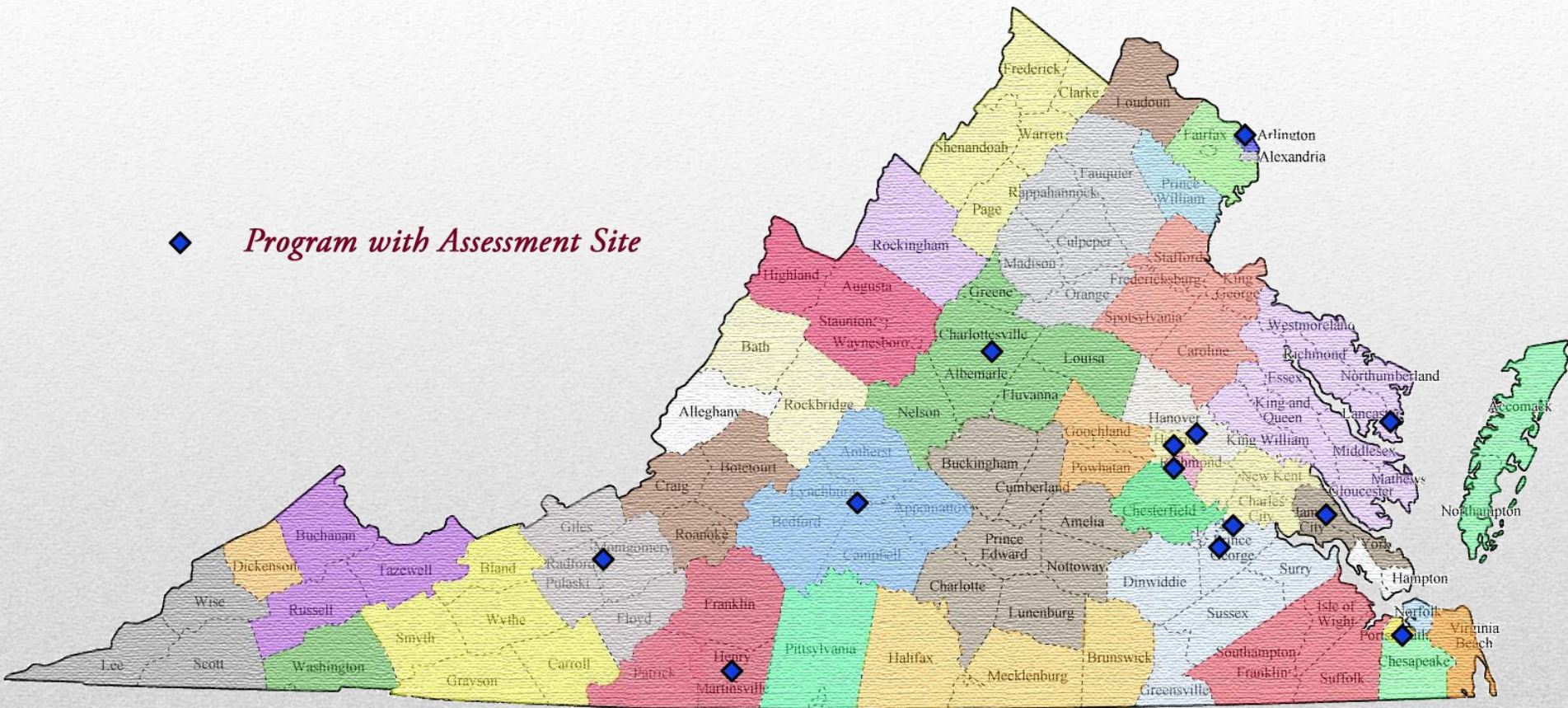


FY'15

General Assembly again doubles sites

(12)

◆ *Program with Assessment Site*

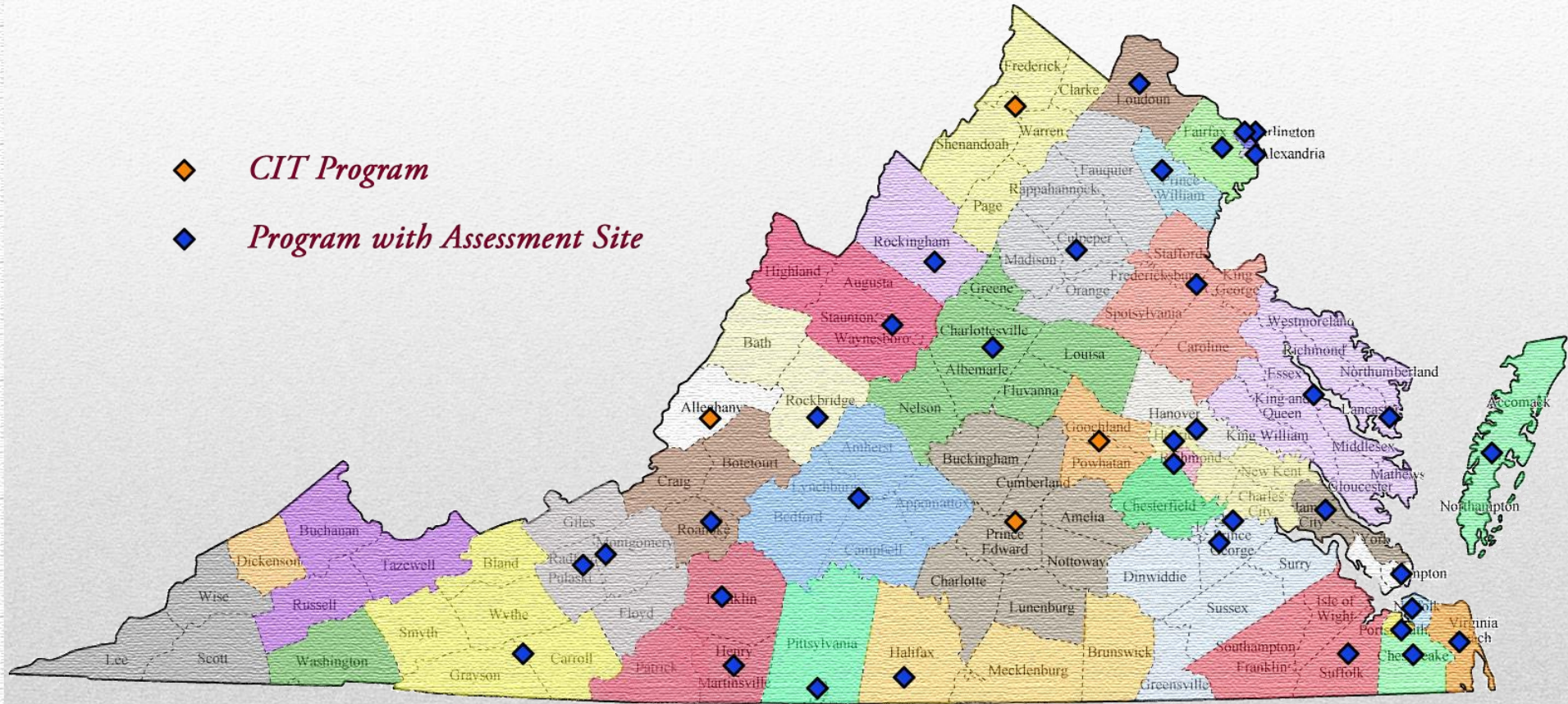


FY'17

Additional four sites added

(36)

- ◆ *CIT Program*
- ◆ *Program with Assessment Site*



- **Challenges**
 - **MOU's**
 - **Data**
 - **Personnel**
 - **Transportation**
 - **Ongoing Training**

How do you make it happen?

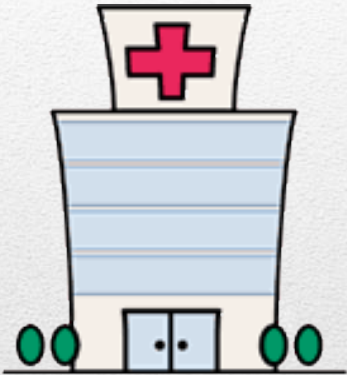
- **Law Enforcement/Security**
- **Clinicians**
- **Cost of Space**
- **Incidentals**
- **Transportation***



How are we spending it?



10 Sites located in office environments
(including CSBs)



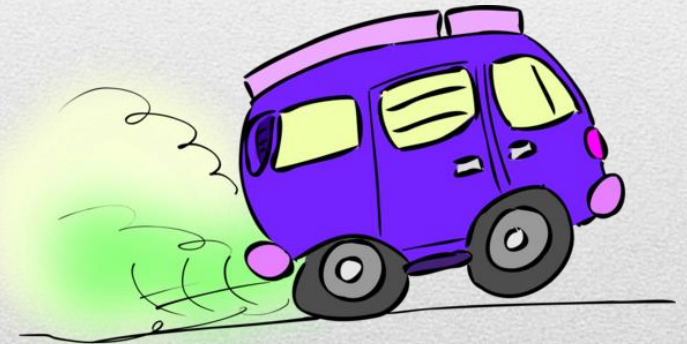
23 Sites co-located in or adjacent to EDs



3 On medical or psychiatric hospital campus but not
ED adjacent

What does it look like?

- **TDO is written for facility where Consumer is to be detained**
- **OR**
- **For medical facility to receive care prior to arrival at inpatient facility**



TRANSPORTATION

- 2015- Virginia DBHDS Pilot Program
- Mount Rogers Community Services Board (Galax, Va.)]
 - TDO transports were accomplished using alternative transportation during the project pilot
 - Very supportive feedback from partner agencies

ALTERNATIVE TRANSPORTATION

- Under an ECO, custody may be transferred to a facility provided that it is:
 - (i) is licensed to provide the level of security necessary to protect both the person and others from harm,
 - (ii) is actually capable of providing the level of security necessary to protect the person and others from harm, and
 - (iii) in cases in which transportation is provided by a law-enforcement agency, has entered into an agreement or memorandum of understanding with the law-enforcement agency

TRANSFER OF CUSTODY

Stephen Craver
CIT Assessment Site Coordinator/CIT
Liaison
DBHDS
1220 Bank St. Richmond, Va
Stephen.craver@dbhds.virginia.gov
