



**MARYLAND**  
Department of Health

**Public Health Preparedness and Situational Awareness Report: #2021:27**

Reporting for the week ending 07/10/21 (MMWR Week #27)

**July 16th, 2021**

**CURRENT HOMELAND SECURITY THREAT LEVELS**

**National: No Active Alerts**

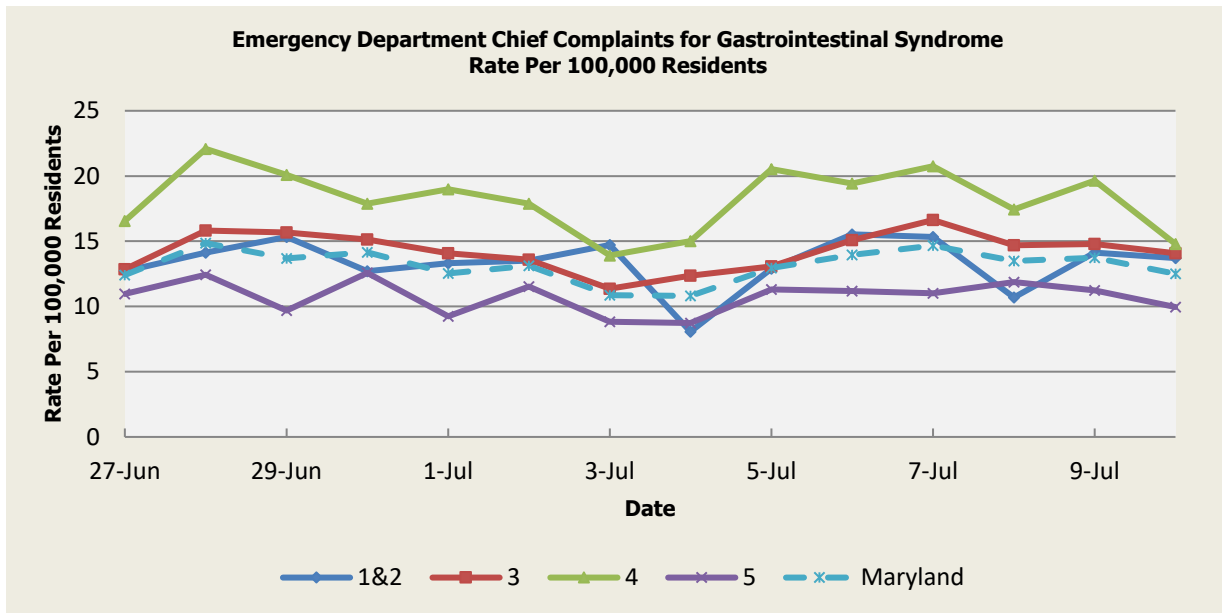
**Maryland: **ENHANCED** (MEMA status)**

**SYNDROMIC SURVEILLANCE REPORTS**

**ESSENCE (Electronic Surveillance System for the Early Notification of Community-based Epidemics):** Graphical representation is provided for all syndromes (excluding the “Other” category; see Appendix 1) by Health and Medical Regions (See Appendix 2). Emergency department chief complaint data is presented as rates per 100,000 residents using data from the 2010 census. Electronic Surveillance System for the Early Notification of Community-Based Epidemics (ESSENCE). Baltimore, MD: Maryland Department of Health; 2021.

*(report continues on next page)*

# Gastrointestinal Syndrome



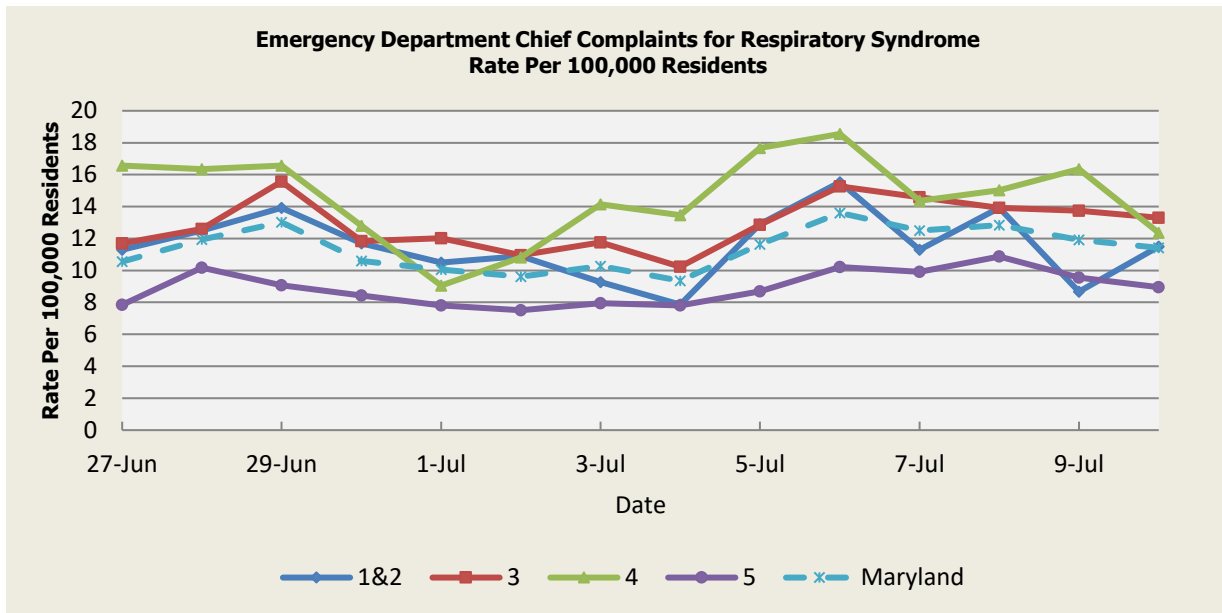
There was one (1) outbreak of Gastroenteritis in a Daycare Facility (Region 3).

Gastrointestinal Syndrome Baseline Data January 1, 2010 - Present					
Health Region	1&2	3	4	5	Maryland
Mean Rate*	13.14	14.72	15.85	10.06	12.88
Median Rate*	13.11	14.61	15.46	10.00	12.83

\* Per 100,000 Residents

(report continues on next page)

# Respiratory Syndrome



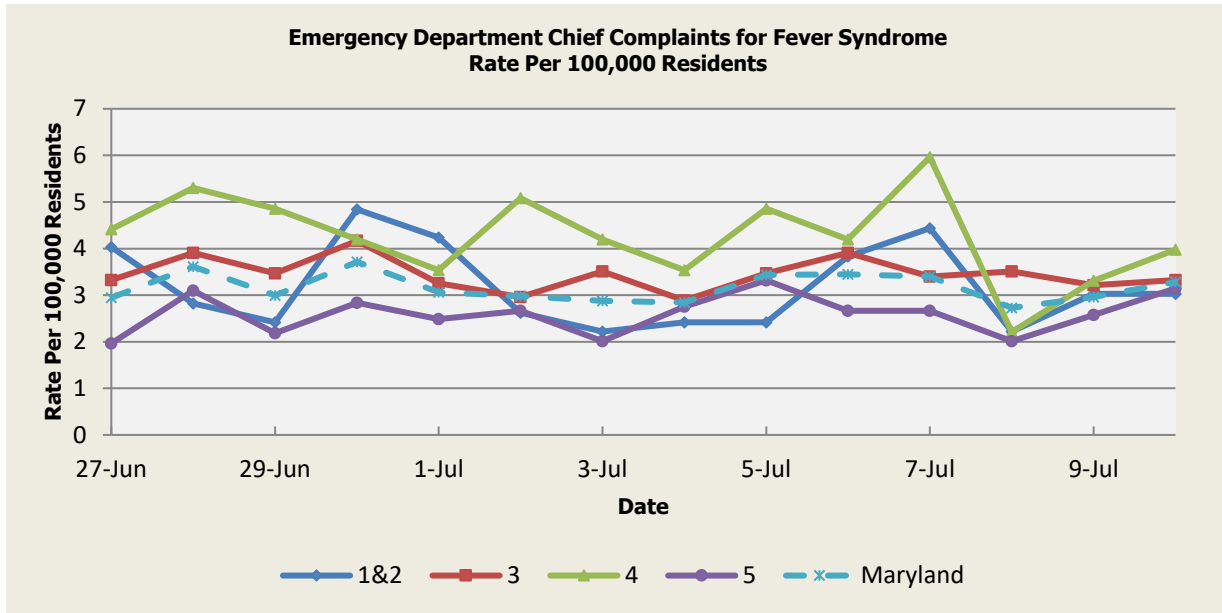
There were twelve (12) Respiratory Syndrome outbreaks reported this week: one (1) outbreak of COVID-19 in a Correctional Facility (Region 3), two (2) outbreaks of COVID-19 in Hospitals (Region 3), six (6) outbreaks of COVID-19 in Nursing Homes (Regions 3,4,5), one (1) outbreak of COVID-19 in a Substance Use Treatment Program (Region 5), one (1) outbreak of COVID-19 in a Transitional Housing Facility (Region 3), one (1) outbreak of COVID-19 in a Hotel (Region 4).

Respiratory Syndrome Baseline Data January 1, 2010 - Present					
Health Region	1&2	3	4	5	Maryland
Mean Rate*	12.42	14.66	15.20	9.88	12.68
Median Rate*	12.10	13.99	14.35	9.43	12.11

\* Per 100,000 Residents

(report continues on next page)

# Fever Syndrome



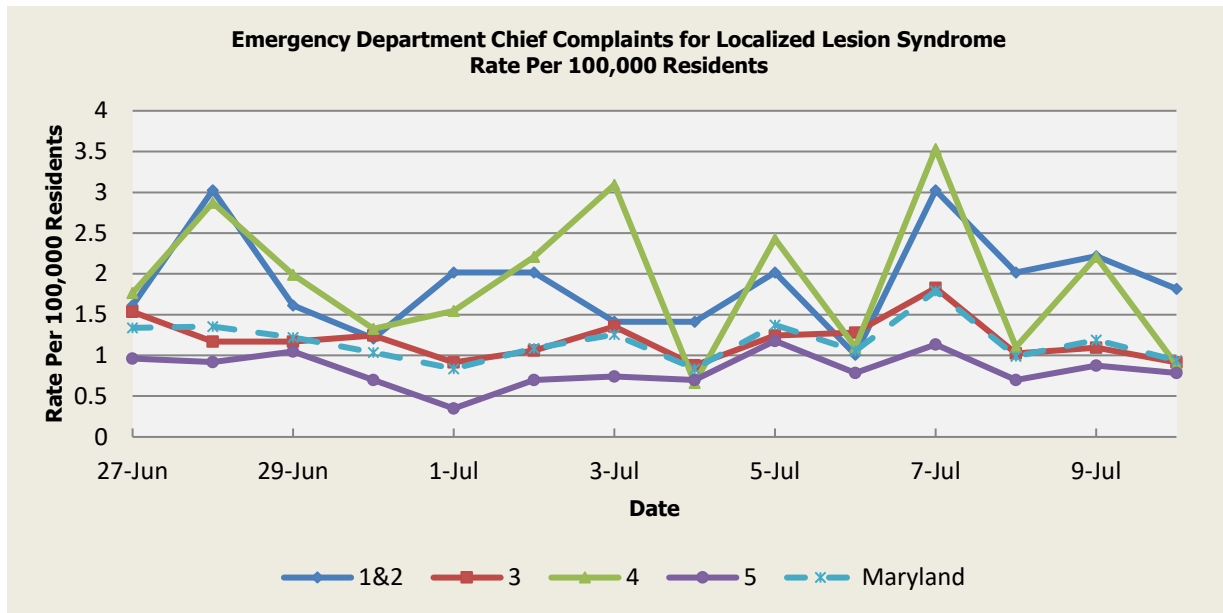
There were no Fever Syndrome outbreaks reported this week.

Fever Syndrome Baseline Data January 1, 2010 - Present					
Health Region	1&2	3	4	5	Maryland
Mean Rate*	3.03	3.86	4.09	2.98	3.47
Median Rate*	2.82	3.73	3.97	2.88	3.35

\*Per 100,000 Residents

(report continues on next page)

## Localized Lesion Syndrome



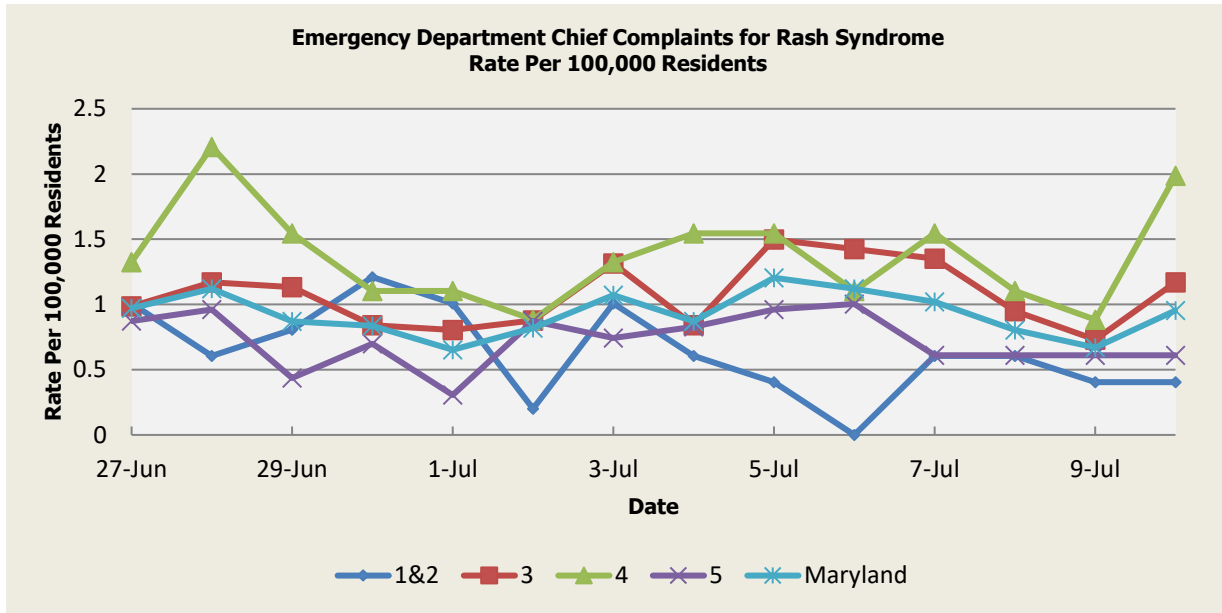
There were no Localized Lesion Syndrome outbreaks reported this week.

Localized Lesion Syndrome Baseline Data January 1, 2010 - Present					
Health Region	1&2	3	4	5	Maryland
Mean Rate*	1.16	1.66	1.95	0.85	1.33
Median Rate*	1.01	1.61	1.77	0.83	1.29

\* Per 100,000 Residents

(report continues on next page)

# Rash Syndrome



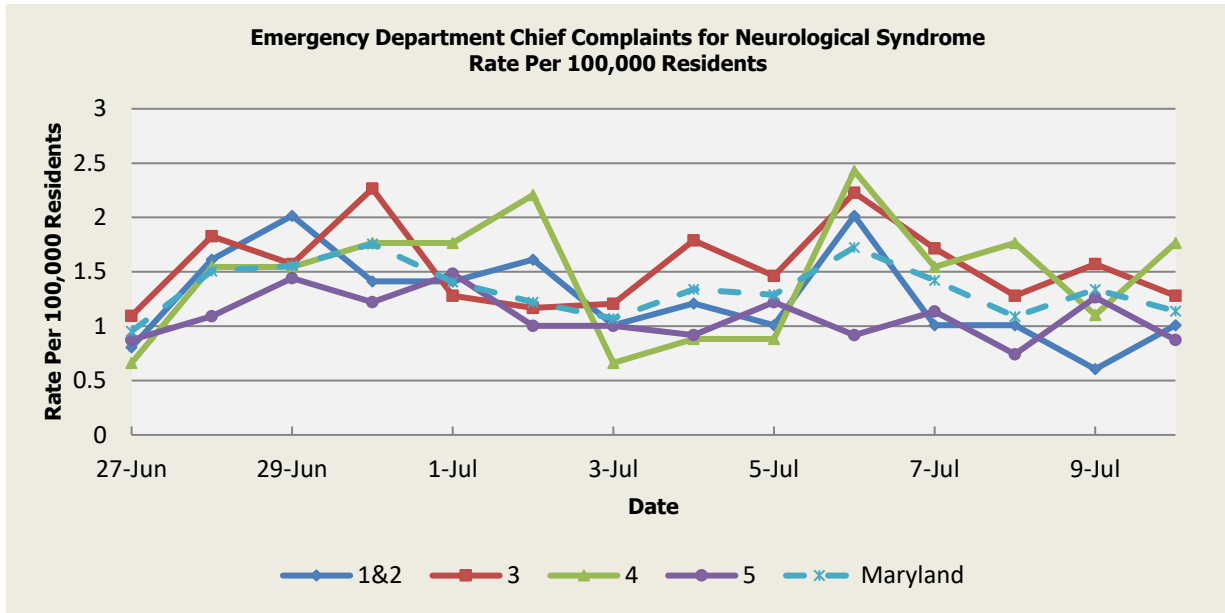
There were no Rash illness outbreaks reported this week.

Rash Syndrome Baseline Data January 1, 2010 - Present					
Health Region	1&2	3	4	5	Maryland
Mean Rate*	1.17	1.55	1.64	0.90	1.28
Median Rate*	1.01	1.50	1.55	0.87	1.25

\* Per 100,000 Residents

(report continues on next page)

# Neurological Syndrome



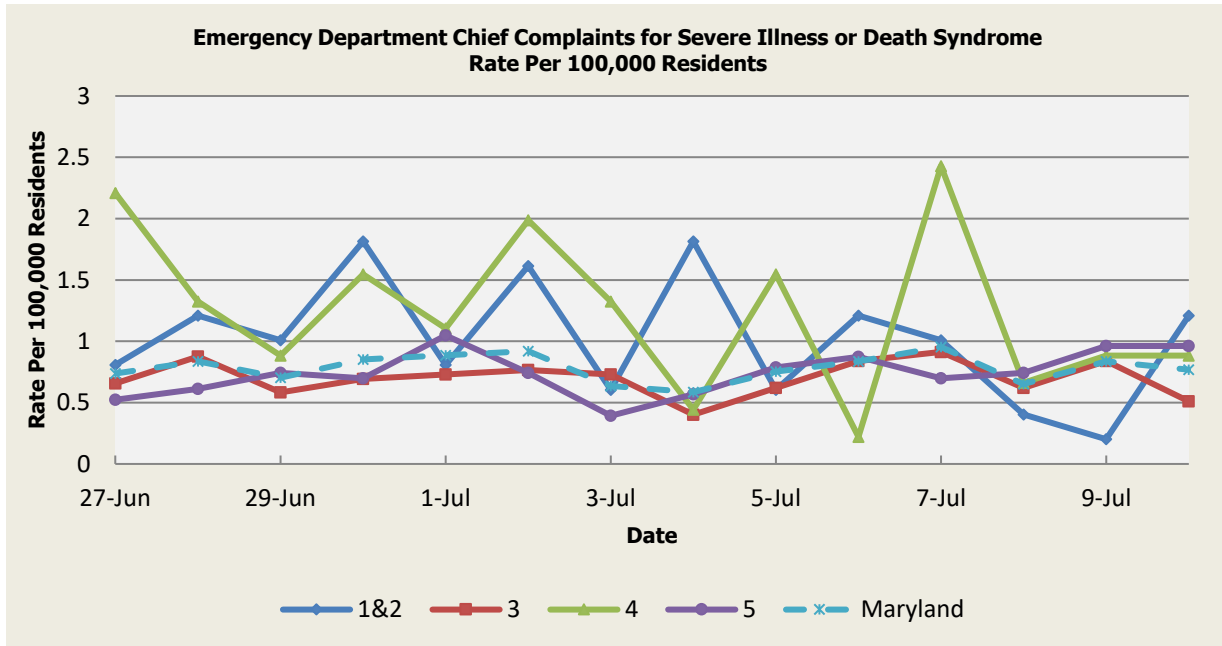
There were no Neurological Syndrome outbreaks reported this week.

Neurological Syndrome Baseline Data January 1, 2010 - Present					
Health Region	1&2	3	4	5	Maryland
Mean Rate*	0.83	1.03	0.96	0.66	0.87
Median Rate*	0.81	0.99	0.88	0.61	0.85

\* Per 100,000 Residents

(report continues on next page)

## Severe Illness or Death Syndrome



There were no Severe Illness or Death Syndrome outbreaks reported this week.

Severe Illness or Death Syndrome Baseline Data January 1, 2010 - Present					
Health Region	1&2	3	4	5	Maryland
Mean Rate*	0.66	0.87	0.85	0.55	0.73
Median Rate*	0.60	0.84	0.88	0.52	0.70

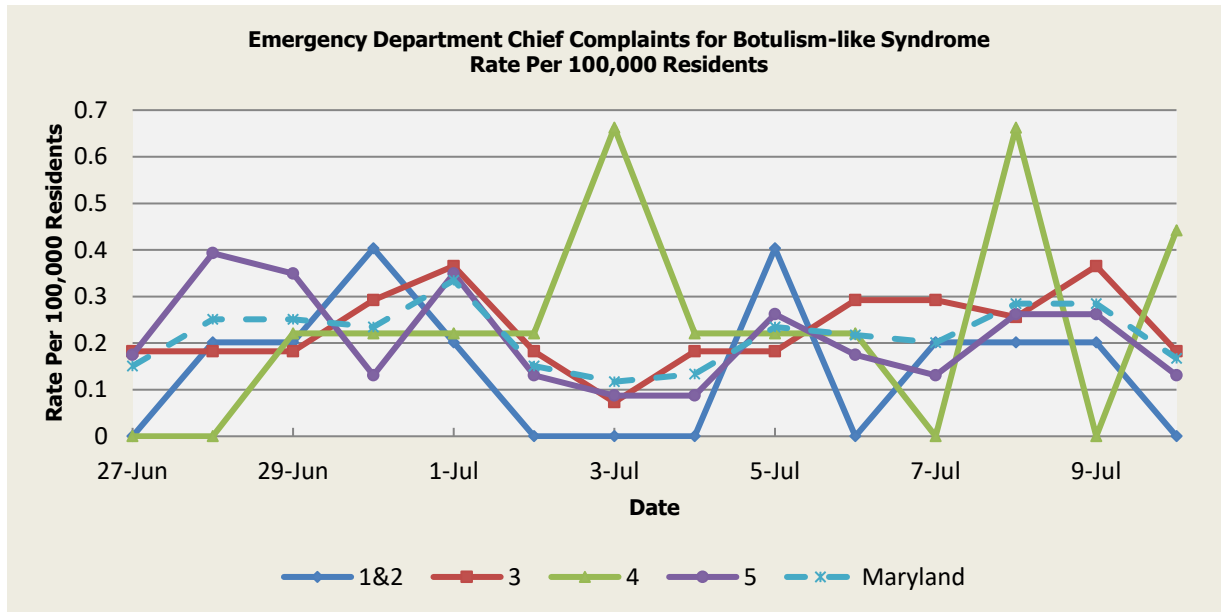
\* Per 100,000 Residents

(report continues on next page)



## SYNDROMES RELATED TO CATEGORY A AGENTS

### Botulism-like Syndrome



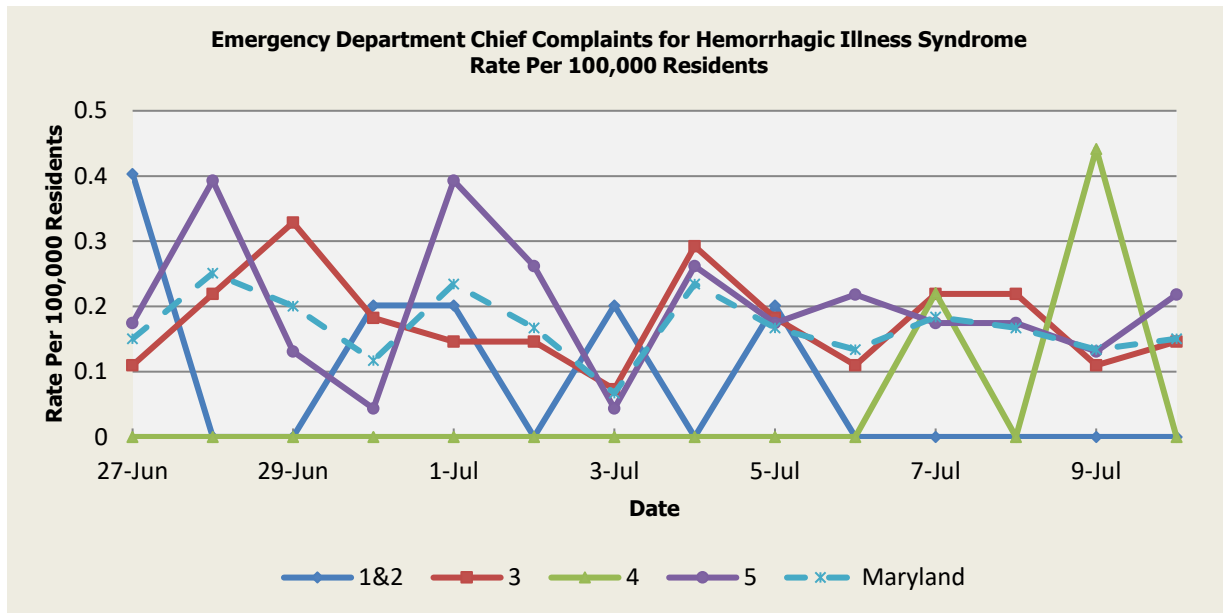
There was an appreciable increase above baseline in the rate of ED visits for Botulism-like Syndrome on 7/3 (Region 4), 7/8 (Region 4). These increases are not known to be associated with any outbreaks.

<b>Botulism-like Syndrome Baseline Data January 1, 2010 - Present</b>					
Health Region	1&2	3	4	5	Maryland
Mean Rate*	0.08	0.14	0.07	0.09	0.11
Median Rate*	0.00	0.11	0.00	0.09	0.10

\* Per 100,000 Residents

*(report continues on next page)*

## Hemorrhagic Illness Syndrome



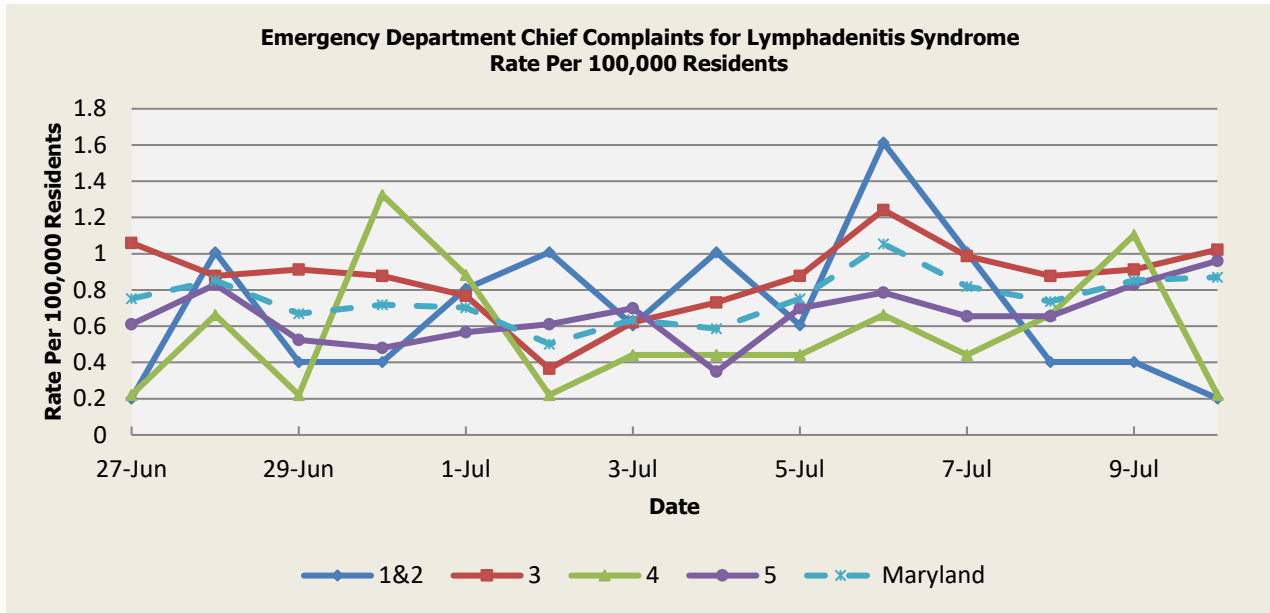
There was an appreciable increase above baseline in the rate of ED visits for Hemorrhagic Illness Syndrome on 6/29 (Region 3), 7/1 (Region 5), 7/9 (Region 4). These increases are not known to be associated with any outbreaks.

Hemorrhagic Illness Syndrome Baseline Data January 1, 2010 - Present					
Health Region	1&2	3	4	5	Maryland
Mean Rate*	0.05	0.17	0.04	0.15	0.14
Median Rate*	0.00	0.11	0.00	0.09	0.12

\* Per 100,000 Residents

(report continues on next page)

# Lymphadenitis Syndrome



There was an appreciable increase above baseline in the rate of ED visits for Lymphadenitis Syndrome on 6/27 (Regions 1&2), 6/30 (Region 4), 7/6 (Regions 1&2). These increases are not known to be associated with any outbreaks.

Lymphadenitis Syndrome Baseline Data January 1, 2010 - Present					
Health Region	1&2	3	4	5	Maryland
Mean Rate*	0.41	0.61	0.41	0.40	0.50
Median Rate*	0.40	0.58	0.44	0.35	0.49

\* Per 100,000 Residents

(report continues on next page)

## **MARYLAND REPORTABLE DISEASE SURVEILLANCE**

### **Coronavirus Disease 2019 (COVID-19) Situation Summary**

On March 5<sup>th</sup>, 2020, the Maryland Department of Health announced the first cases of coronavirus disease 2019 (abbreviated COVID-19) in the State of Maryland.

### **Confirmed COVID-19 Case Counts in Maryland by County (As of July 16th, 2021)**

<b>County</b>	<b>Number of Confirmed Cases</b>
Allegany	7,072
Anne Arundel	44,125
Baltimore City	66,127
Baltimore County	53,267
Calvert	4,251
Caroline	2,359
Carroll	9,552
Cecil	6,398
Charles	11,015
Dorchester	2,857
Frederick	19,897
Garrett	2,057
Harford	16,703
Howard	19,406
Kent	1,362
Montgomery	71,432
Prince George's	85,875
Queen Anne's	3,017
St. Mary's	6,091
Somerset	2,628
Talbot	2,188
Washington	14,697
Wicomico	7,757
Worcester	3,715
<b>Total</b>	<b>463,848</b>

The most up-to-date information may be found on the Maryland Department of Health website at <https://coronavirus.maryland.gov>.

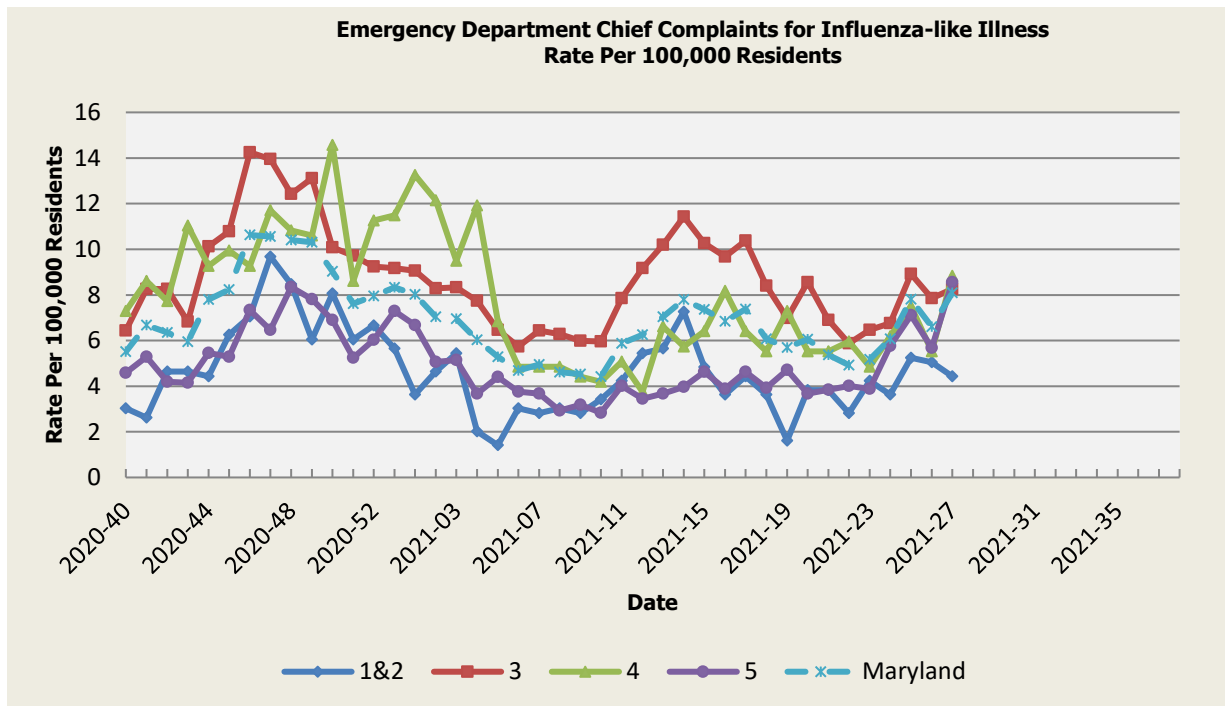
*(report continues on next page)*

## **SYNDROMIC INFLUENZA SURVEILLANCE**

Seasonal Influenza reporting occurs from MMWR Week 40 through MMWR Week 20 (October 2020 through May 2021). Due to the COVID-19 pandemic, influenza reporting will be extended to the beginning of the 2021-2022 reporting season (MMWR Week 40/Week Ending October 9, 2021).

**Seasonal Influenza activity for Week 27:**

### **Influenza-like Illness**

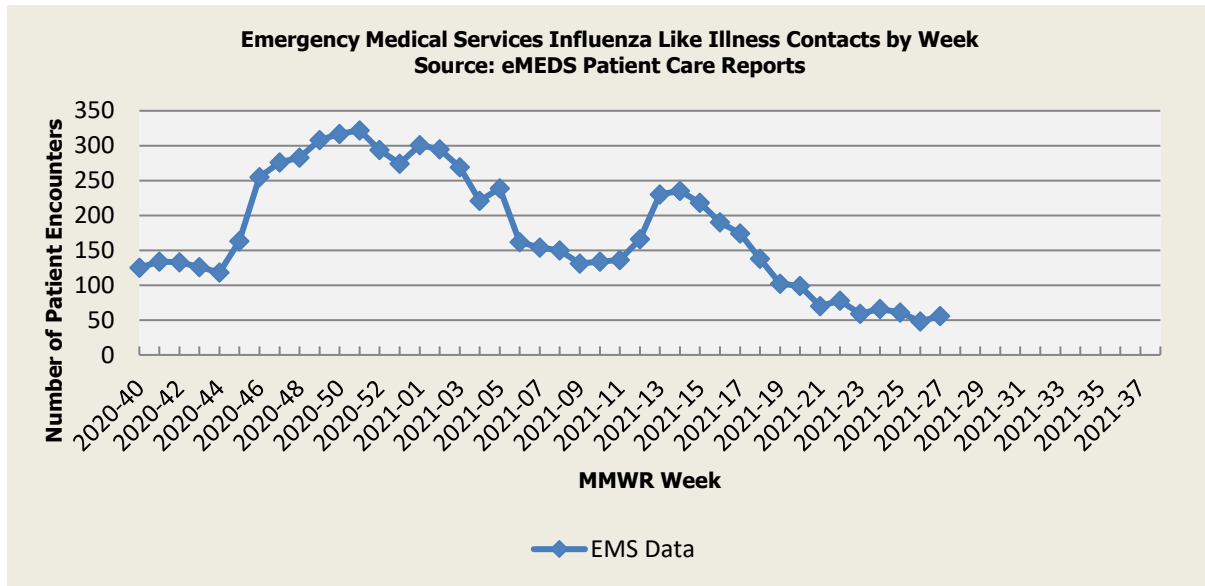


<b>Influenza-like Illness Baseline Data Week 1 2010 - Present</b>					
Health Region	1&2	3	4	5	Maryland
Mean Rate*	9.96	13.80	13.10	11.49	12.55
Median Rate*	7.26	10.16	9.27	8.29	9.07

\* Per 100,000 Residents

*(report continues on next page)*

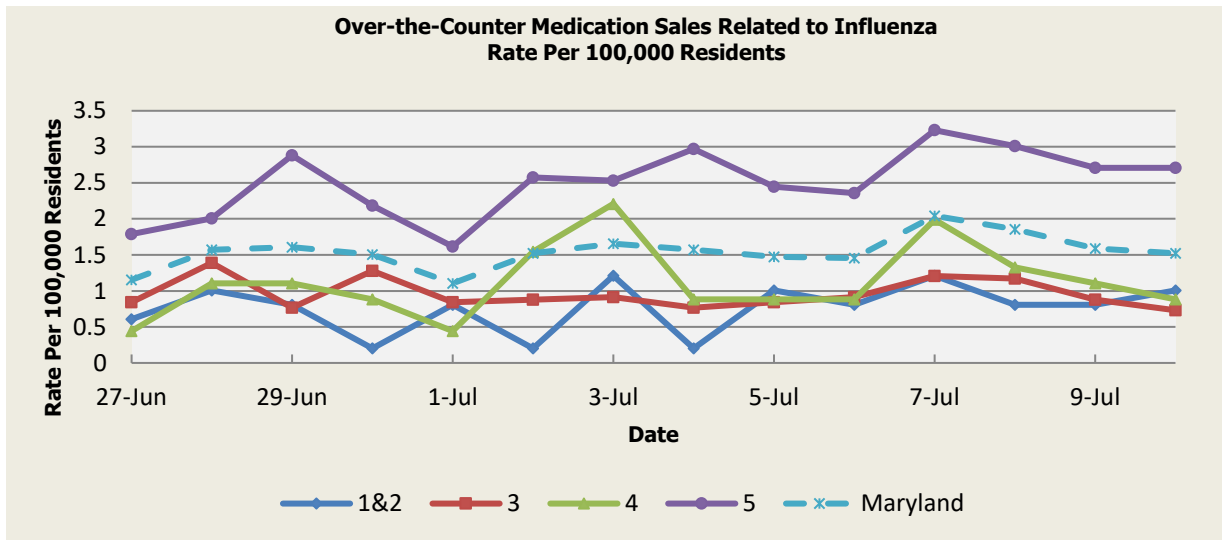
## Influenza-like Illness Contacts by Week



**Disclaimer on eMEDS flu related data:** These data are based on EMS Pre-hospital care reports where the EMS provider has selected “flu like illness” as a primary or secondary impression of a patient’s illness. This impression is solely based on the signs and symptoms seen by the provider, not on any diagnostic tests. Since these numbers do not include all primary or secondary impressions that may be seen with influenza the actual numbers may be low. These data are reported for trending purposes only.

*(report continues on next page)*

## Over-the-Counter Influenza-Related Medication Sales



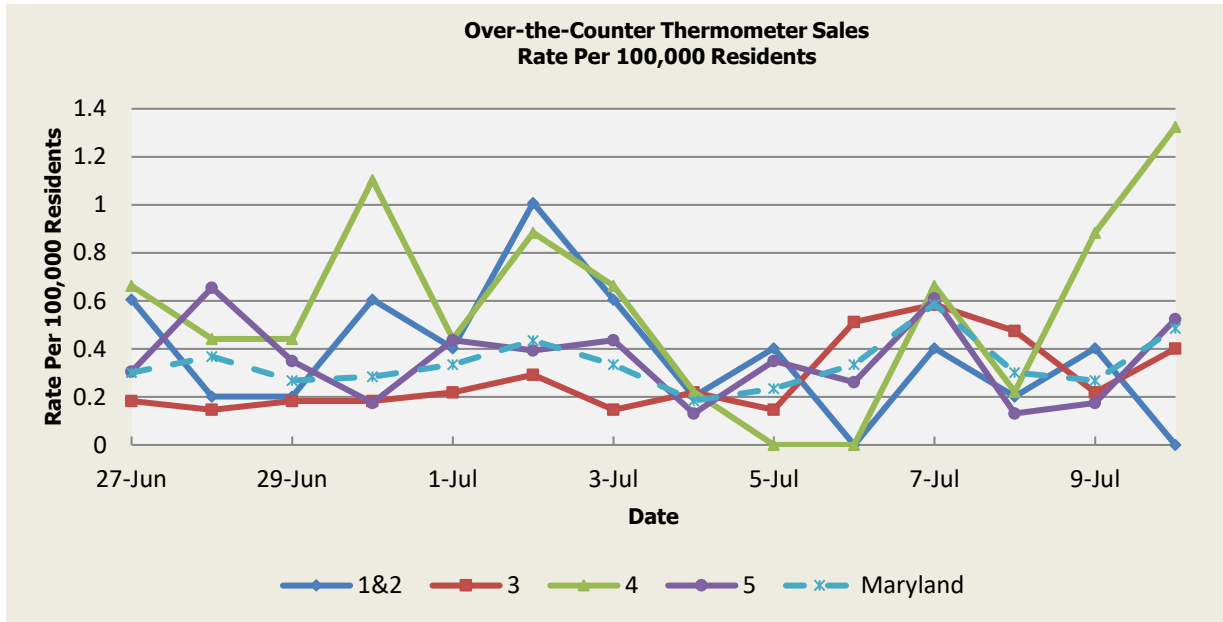
There was no appreciable increase above baseline in the rate of OTC Medication Sales during this reporting period.

OTC Medication Sales Baseline Data January 1, 2010 - Present					
Health Region	1&2	3	4	5	Maryland
Mean Rate*	3.15	4.00	2.45	7.26	5.06
Median Rate*	2.42	3.00	1.99	6.29	4.13

\* Per 100,000 Residents

(report continues on next page)

## Over-the-Counter Thermometer Sales



There was no appreciable increase above baseline in the rate of OTC Thermometer Sales during this reporting period.

Thermometer Sales Baseline Data January 1, 2010 - Present					
Health Region	1&2	3	4	5	Maryland
Mean Rate*	2.61	2.47	2.03	3.27	2.75
Median Rate*	2.42	2.45	1.99	3.32	2.79

\* Per 100,000 Residents

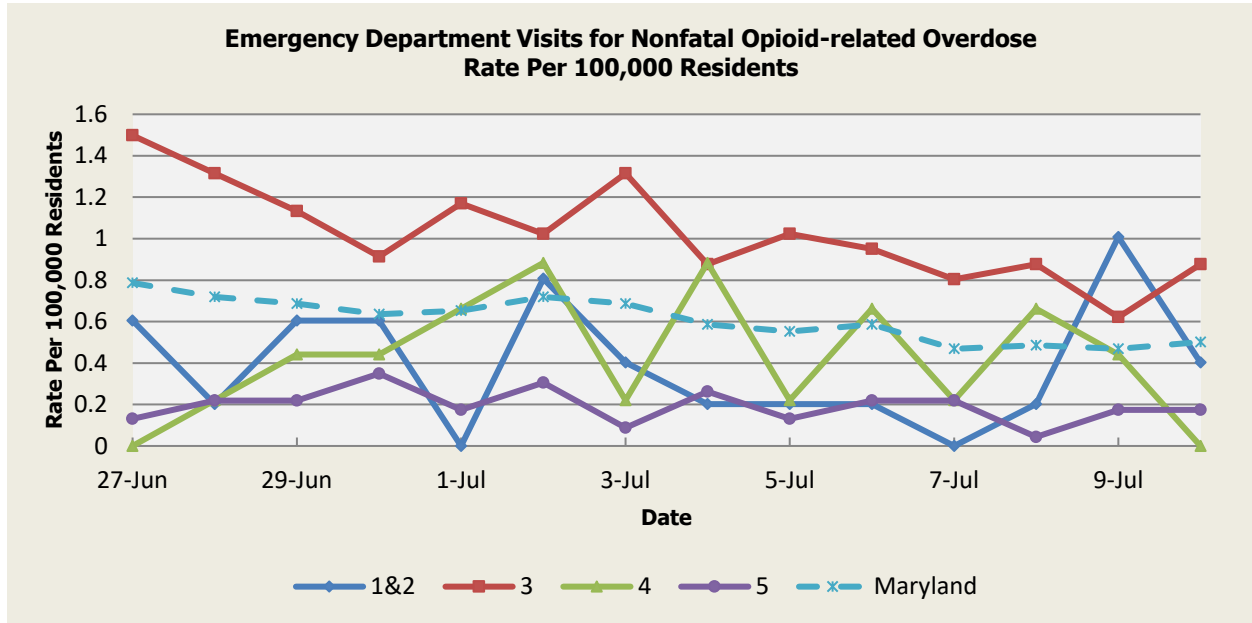
(report continues on next page)



## **SYNDROMIC OVERDOSE SURVEILLANCE**

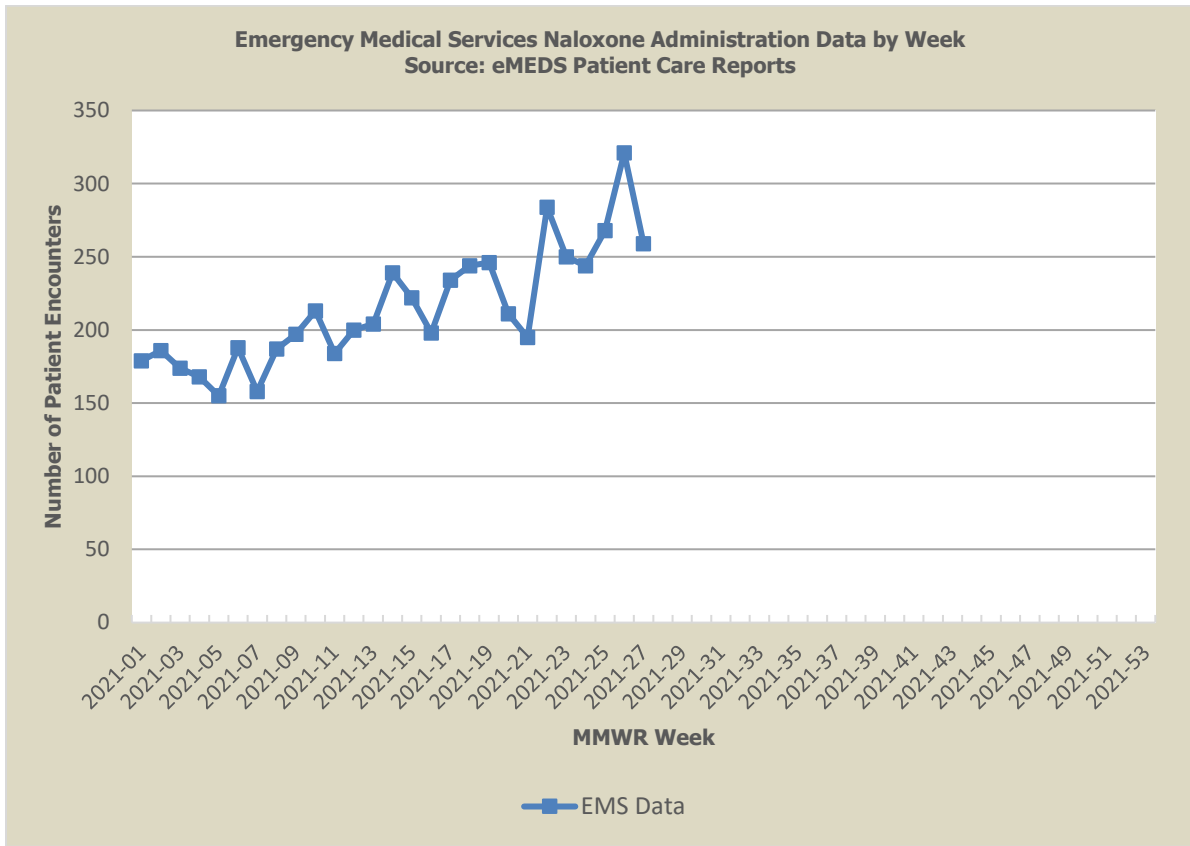
The purpose of this section is to characterize nonfatal overdose trends among Maryland residents captured by ESSENCE data, including emergency department (ED) chief complaint and discharge diagnosis as well as emergency medical services (EMS) patient care reports. Maryland uses ESSENCE data to track trends in nonfatal drug overdoses as a critical strategy for surveillance and tailoring prevention resources to populations most affected in the state.

### **Nonfatal Opioid-related Overdose**



*(report continues on next page)*

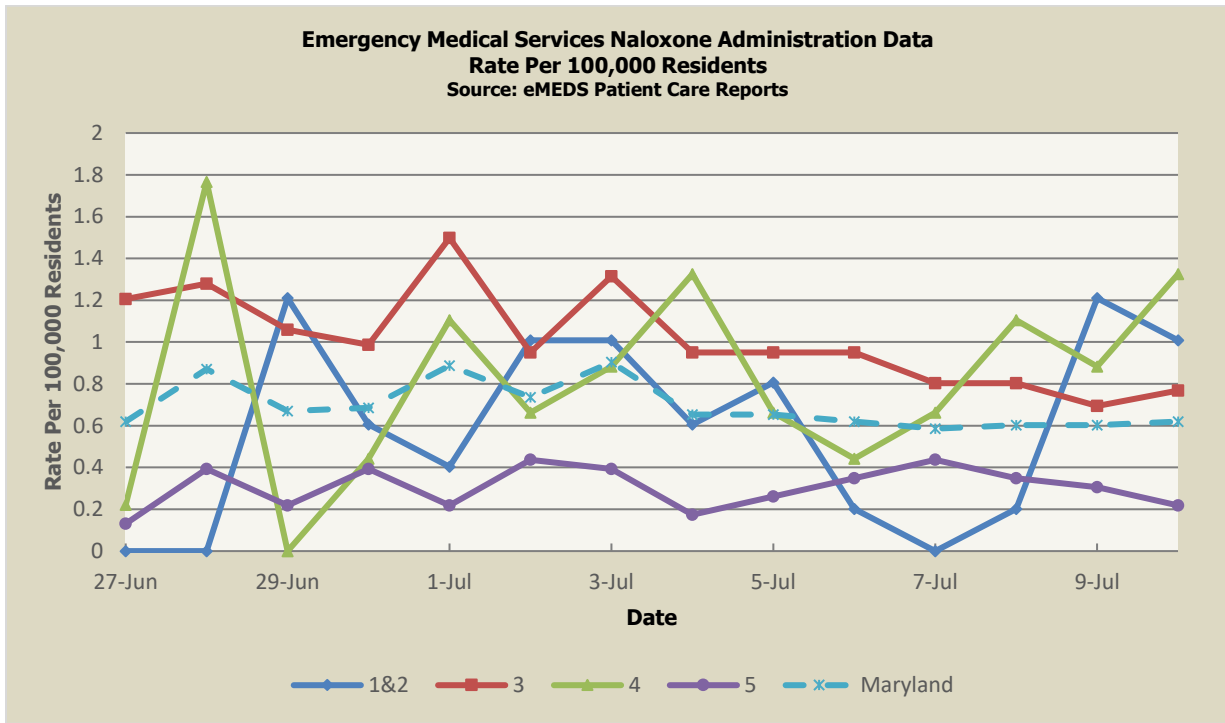
# Naloxone Administration Data by Week



**Disclaimer on eMEDS naloxone administration related data:** These data are based on EMS Pre-hospital care reports where the EMS provider has documented that they administered naloxone. The administration of naloxone is based on the patient’s signs and symptoms and not on any diagnostic tests. These data are reported for trending purposes only.

*(report continues on next page)*

# Naloxone Administration Data



**Disclaimer on eMEDS Naloxone administration related data:** These data are based on EMS Pre-hospital care reports where the EMS provider has documented that they administered naloxone. The administration of naloxone is based on the patient's signs and symptoms and not on any diagnostic tests. These data are reported for trending purposes only.

*(report continues on next page)*

## **PANDEMIC INFLUENZA UPDATE / AVIAN INFLUENZA-RELATED REPORTS**

**WHO update:** The current WHO phase of pandemic alert for avian influenza is ALERT. Currently, the avian influenza H5N1 virus continues to circulate in poultry in some countries, especially in Asia and northeast Africa. This virus continues to cause sporadic human infections with some instances of limited human-to-human transmission among very close contacts. There has been no sustained human-to-human or community-level transmission identified thus far.

Influenza A (H7N9) is one of a subgroup of influenza viruses that normally circulate among birds. Until recently, this virus had not been seen in people. However, human infections have now been detected. Presently, there is limited information about the scope of the disease the virus causes and about the source of exposure. The disease is of concern because most patients have been severely ill. There is no indication thus far that it can be transmitted between people, but both animal-to-human and human-to-human routes of transmission are being actively investigated.

**Alert phase:** This is the phase when influenza caused by a new subtype has been identified in humans. Increased vigilance and careful risk assessment, at local, national, and global levels are characteristic of this phase. If the risk assessments indicate that the new virus is not developing into a pandemic strain, a de-escalation of activities towards those in the interpandemic phase may occur. As of July 16th, 2021, the WHO-confirmed global total (2003-2020) of human cases of H5N1 avian influenza virus infection stands at 862, of which 455 have been fatal. Thus, the case fatality rate for human H5N1 is approximately 53%.

### **AVIAN INFLUENZA**

**AVIAN INFLUENZA (SWEDEN), 12 July 2021,** Highly pathogenic influenza A viruses (infection with) (non-poultry including wild birds), Sweden. Read More: <https://promedmail.org/promed-post/?id=8512938>

### **HUMAN AVIAN INFLUENZA**

*There were no relevant human avian influenza reports this week*

*(report continues on next page)*

## **NATIONAL DISEASE REPORTS**

**SALMONELLOSIS, SEROTYPE TYPHIMURIUM (USA)**, 15 July 2021, The following is from a list of outbreak investigations being managed by FDA's CORE Response Teams. Read More: <https://promedmail.org/promed-post/?id=8521906>

**E. COLI EHEC (USA)**, 15 July 2021, The following is from a list of outbreak investigations being managed by FDA's CORE Response Teams. Read More: <https://promedmail.org/promed-post/?id=8521889>

**PLAGUE (COLORADO)**, 10 July 2021, State health officials have confirmed that plague was responsible for the death of a Durango-area child. Read More: <https://promedmail.org/promed-post/?id=8509020>

**LEGIONELLOSIS (MINNESOTA)**, 10 July 2021, State health officials say 2 laboratory-confirmed cases of Legionnaires' disease have been linked to an Albert Lea hotel. Read More: <https://promedmail.org/promed-post/?id=8508983>

## **INTERNATIONAL DISEASE REPORTS**

**CORONAVIRUS DISEASE 2019 UPDATE (242) (GLOBAL)**, 15 July 2021, In its weekly pandemic snapshot yesterday [Tue 13 Jul 2021], the WHO said COVID-19 deaths are increasing again after falling for 9 weeks, with the sharpest upticks in Africa and Southeast Asia. Read More: <https://promedmail.org/promed-post/?id=8521711>

**TICK-BORNE ENCEPHALITIS AND LYME DISEASE (LATVIA)**, 15 July 2021, Each 5th tick, which has been investigated in the laboratory of the Latvian Infectiology Centre, contains Borrelia or the initiator of Lyme disease. Read More: <https://promedmail.org/promed-post/?id=8519460>

**CHOLERA, DIARRHEA & DYSENTERY UPDATE (NIGERIA)**, 13 July 2021, The Director-General of the Nigeria Centre for Disease Control, Dr. Chikwe Ihekweazu, on [Sat 10 Jul 2021], said, 6 states of the federation reported 1786 suspected cases of cholera between [20 to 26 Jun 2021]. Read More: <https://promedmail.org/promed-post/?id=8515684>

**INVASIVE MOSQUITO (FLORIDA)**, 11 July 2021, The Collier Mosquito Control District found 2 mosquito species in their traps that are new to Collier County. Read More: <https://promedmail.org/promed-post/?id=8511373>

**RABIES (24): AMERICAS (COLOMBIA, CANADA, USA)**, 10 July 2021, The Colombian National Institute of Health (INS) confirmed to the Department of Health of Huila, a case of death due to the rabies virus, which affected a young man who had been referred for hospital care from the municipality of La Argentina. Read More: <https://promedmail.org/promed-post/?id=8509656>

## **OTHER RESOURCES AND ARTICLES OF INTEREST**

More information concerning Public Health and Emergency Preparedness can be found at the Office of Preparedness and Response website: <http://preparedness.health.maryland.gov/> or follow us on Facebook at [www.facebook.com/MarylandOPR](http://www.facebook.com/MarylandOPR).

More data and information on influenza can be found on the MDH website: <http://phpa.health.maryland.gov/influenza/fluwatch/Pages/Home.aspx>

Please participate in the Maryland Resident Influenza Tracking System (MRITS): <http://flusurvey.health.maryland.gov>

\*\*\*\*\*

**NOTE:** This weekly review is a compilation of data from various surveillance systems, interpreted with a focus on a potential BT event. It is not meant to be inclusive of all epidemiology data available, nor is it meant to imply that every activity reported is a definitive BT event. International reports of outbreaks due to organisms on the CDC Critical Biological Agent list will also be reported. While not "secure", please handle this information in a professional manner. Please feel free to distribute within your organization, as you feel appropriate, to other professional staff involved in emergency preparedness and infection control.

For questions about the content of this review or if you have received this and do not wish to receive these weekly notices, please e-mail us. If you have information that is pertinent to this notification process, please send it to us to be included in the routine report.

### **Prepared By:**

Office of Preparedness and Response, Maryland Department of Health  
7462 Candlewood Rd, Hanover, MD 21076

Peter Fotang, MD, MPH  
Epidemiologist, Biosurveillance Program  
Office: 443-628-6555  
Email: [Peter.Fotang@maryland.gov](mailto:Peter.Fotang@maryland.gov)

Jessica Acharya (Goodell), MPH  
Career Epidemiology Field Officer, CDC  
Office: 443-628-6583  
Email: [Jessica.Acharya@maryland.gov](mailto:Jessica.Acharya@maryland.gov)

Lindsey Hall, MPH  
Epidemiologist, Biosurveillance Program  
Office: 443-628-6550  
Email: [Lindsey.hall@maryland.gov](mailto:Lindsey.hall@maryland.gov)

## Appendix 1: ESSENCE Syndrome Definitions and Associated Category A Conditions

Syndrome	ESSENCE Definition	Category A Conditions
Botulism-like	(Botulism or (DifficultyFocusing and DifficultySpeaking) or (DifficultySpeaking and DifficultySwallowing) or (DifficultySwallowing and DifficultyFocusing) or DoubleVision or FacialParalysis or GuillainBarre or Ptosis) and not GeneralExclusions	Botulism
Fever	(Chills or (FeverPlus and (Drowsiness or Seizure)) or FeverOnly or SepsisGroup or ViralSyndrome) and not GeneralExclusions	N/A
Gastrointestinal	(AbdominalCramps or AbdominalPainGroup or Diarrhea or FoodPoisoning or Gastroenteritis or GIBleeding or Peritonitis or Vomiting) and not (GeneralExclusions or Gynecological or Obstetric or Reproductive or UrinaryTract)	Anthrax (gastrointestinal)
Hemorrhagic Illness	(FeverOrChills and (AcuteBloodAbnormalitiesGroup or BleedingFromMouth or BleedingGums or GIBleeding or Hematemesis or Hemoptysis or Nosebleed or Petechiae or Purpura)) and not GeneralExclusions	Viral Hemorrhagic Fever
Localized Lesion	(Boils or Bump or Carbuncle or DepressedUlcer or Eschar or Furuncle or InsectBite or SkinAbscess or (SkinSores and not AllOverBody) or SkinUlcer or SpiderBite) and not (GeneralExclusions or Decubitus or Diabetes or StasisUlcer)	Anthrax (cutaneous) Tularemia
Lymphadenitis	(BloodPoisoning or Bubo or CatScratchDisease or SwollenGlands) and not GeneralExclusions	Plague (bubonic)
Neurological	((([Age<75] and AlteredMentalStatus) or (FeverPlus and (Confusion or Drowsiness or Petechiae or StiffNeck)) or Delirium or Encephalitis or Meningitis or UnconsciousGroup) and not GeneralExclusions	N/A
Rash	(ChickenPox or Measles or RashGeneral or Roseola or (Rubella and not Pregnancy) or Shingles or (SkinSores and AllOverBody) or Smallpox) and not GeneralExclusions	Smallpox
Respiratory	(Anthrax or Bronchitis or (ChestPain and [Age<50]) or Cough or Croup or DifficultyBreathing or Hemothorax or Hypoxia or Influenza or Legionnaires or LowerRespiratoryInfection or Pleurisy or Pneumonia or RespiratoryDistress or RespiratoryFailure or RespiratorySyncytialVirus or RibPain or ShortnessOfBreath or Wheezing) and not (GeneralExclusions or Cardiac or (ChestPain and Musculoskeletal) or Hyperventilation or Pneumothorax)	Anthrax (inhalational) Tularemia Plague (pneumonic)
Severe Illness or Death	CardiacArrest or CodeGroup or DeathGroup or (Hypotension and FeverPlus) or RespiratoryArrest or SepsisGroup or Shock	N/A

## Appendix 2: Maryland Health and Medical Region Definitions

Health and Medical Region	Counties Reporting to ESSENCE
Regions 1 & 2	Allegany County Frederick County Garrett County Washington County
Region 3	Anne Arundel County Baltimore City Baltimore County Carroll County Harford County Howard County
Region 4	Caroline County Cecil County Dorchester County Kent County Queen Anne's County Somerset County Talbot County Wicomico County Worcester County
Region 5	Calvert County Charles County Montgomery County Prince George's County St. Mary's County

