



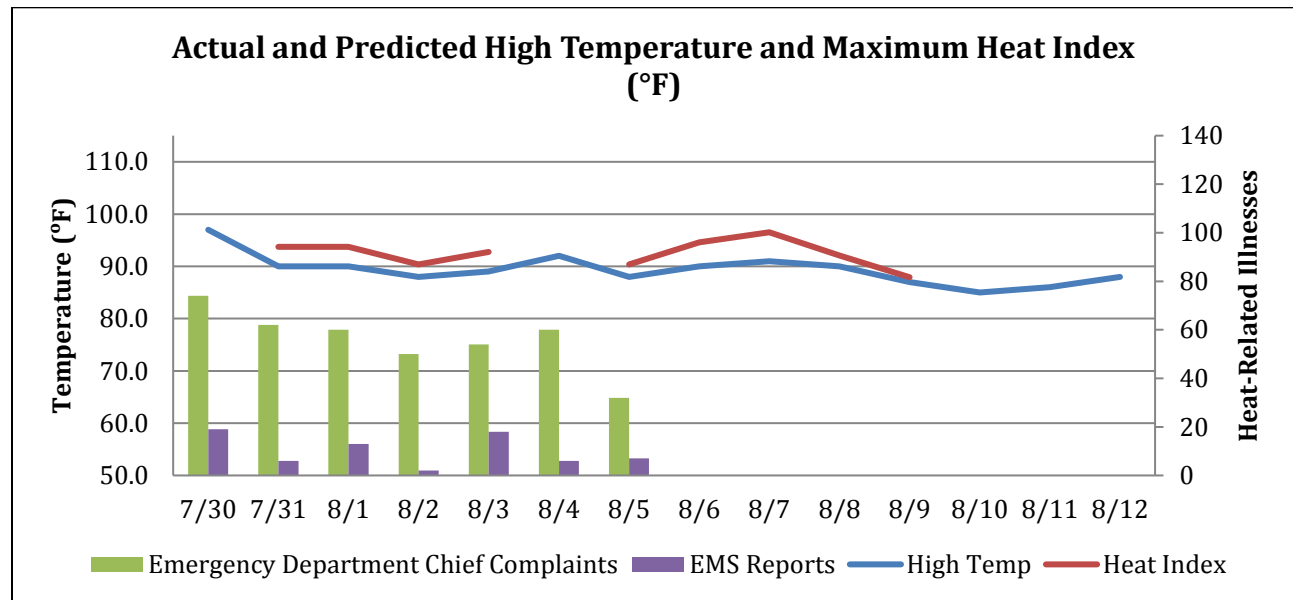
MARYLAND
Department of Health

Weekly Heat-related Illness Surveillance Report

August 7, 2019

Reporting for July 30, 2019 to August 5, 2019

National Weather Service Forecast: No current advisories
Heat Advisories Declared During the Previous Week: 0
Total Heat Advisories Declared This Year: 6

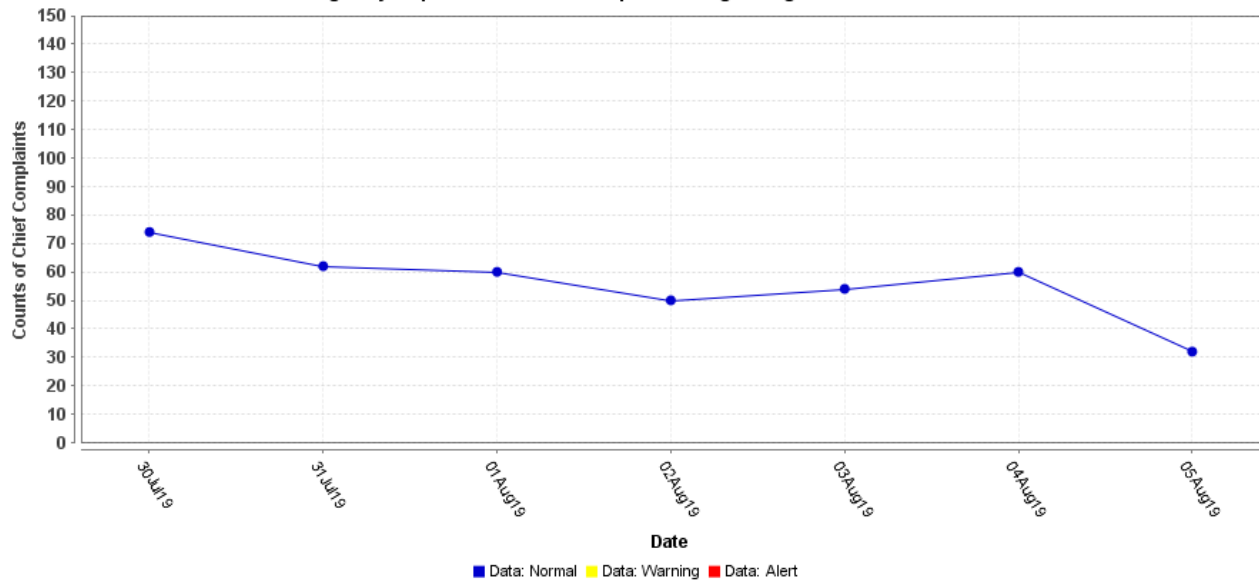


Heat Indexes are only calculated for temperatures above 80°F with humidity of 43% or greater

Note on Emergency Department Data: The results from the query used in ESSENCE, an electronic biosurveillance system, to track heat-related illnesses may be an overestimation of the actual burden of illness related to the hot weather. This overestimation is due to the nature of the query, which includes the term dehydration, a condition that may be caused by factors other than heat.

Note on EMS Data: These data are based on EMS pre-hospital care reports where the EMS provider has selected "Heat Exhaustion/Heat Stroke" and/or "Hyperthermia" as a primary or secondary impression a patient's illness. This impression is solely based on the signs and symptoms seen by the provider, not on any diagnostic tests. Since these numbers do not include all primary or secondary impressions that may be seen with heat exposure the actual numbers may be low. These data are reported for trending purposes only.

Emergency Department Chief Complaints Regarding Heat-related Illness

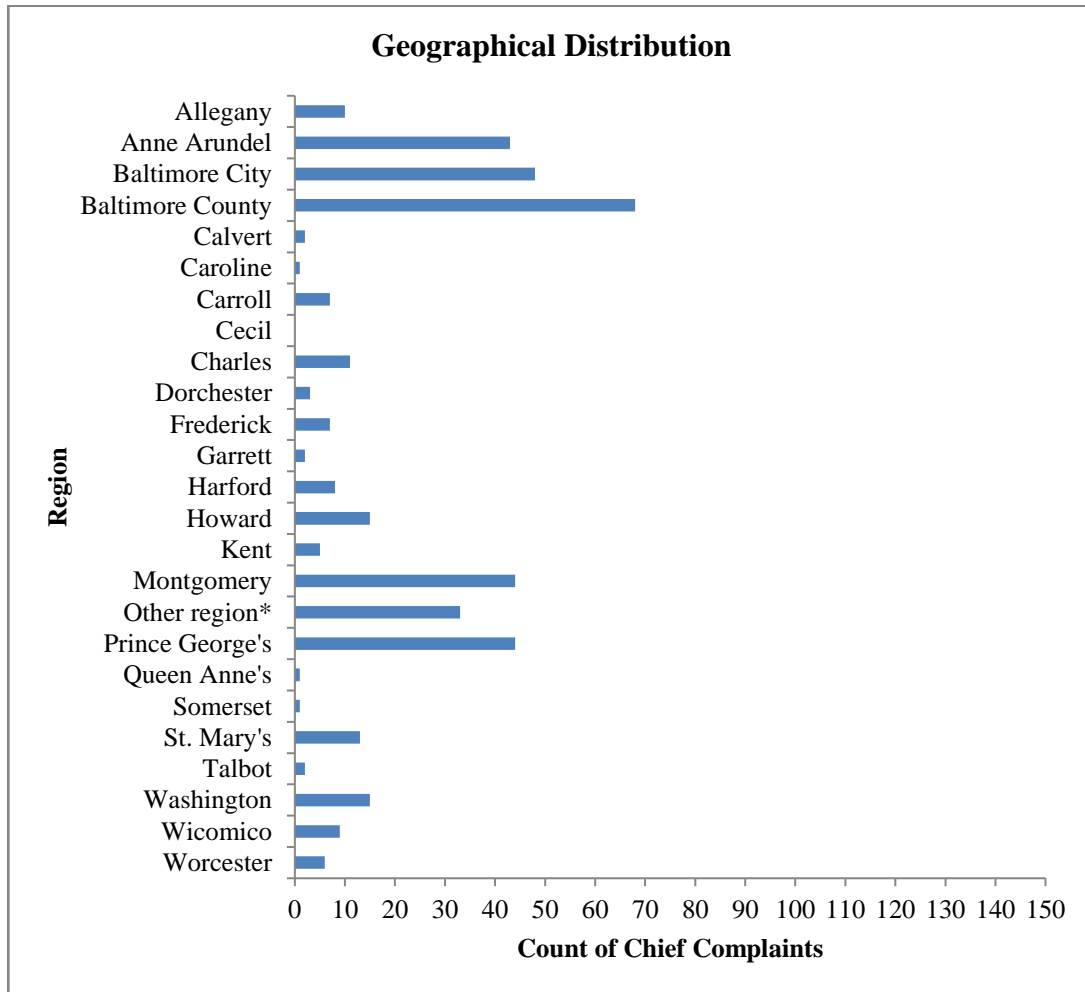


Date	Number of Chief Complaints Regarding Heat-related Illnesses State of Maryland
July 30	74
July 31	62
August 1	60
August 2	50
August 3	54
August 4	60
August 5	32

**Note: ESSENCE chief complaint query for heat-related illness contains the following terms: hyperthermia, heat, dehydration and sunburn*

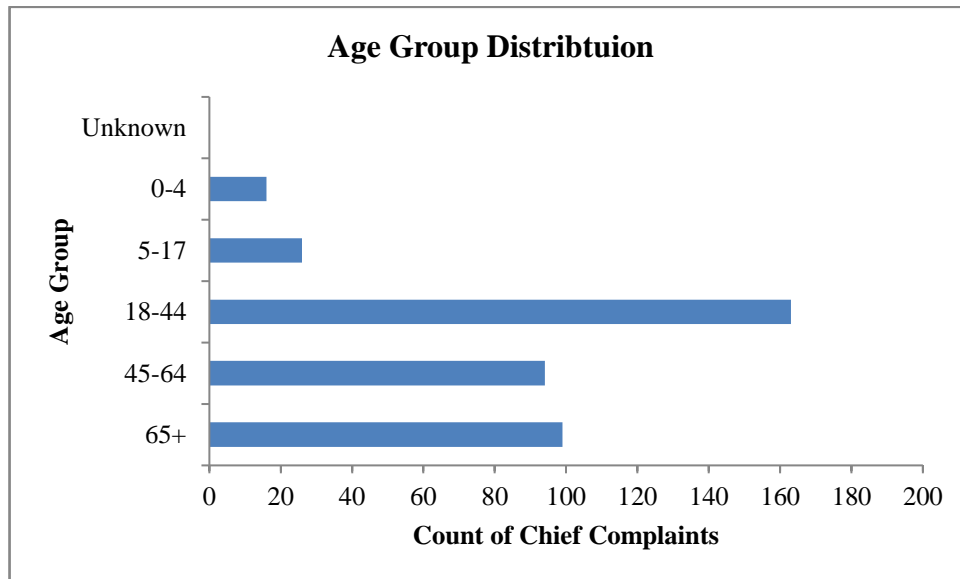
There were no chief complaint clusters identified during the week.

Geographical Distribution of Emergency Department Chief Complaints Regarding Heat-related Illnesses for July 30, 2019 through August 5, 2019



**Geographical distribution of emergency department chief complaints is based on patients' jurisdictions of residence. The "Other Region" category includes patient records without a ZIP code and patients who reside outside of Maryland.*

Age Group Distribution of Emergency Department Chief Complaints Regarding Heat-related Illnesses for July 30, 2019 through August 5, 2019



Report continued on next page...

Total Number of Heat-related Deaths	Jurisdiction*	Age Group	Gender
16	Montgomery**+	18-44 Years Old	Female
	Prince George's	18-44 Years Old	Male
	Cecil**+	45-64 Years Old	Female
	Prince George's**	45-64 Years Old	Male
	Prince George's**+	45-64 Years Old	Male
	Worcester	45-64 Years Old	Female
	Baltimore City	45-64 Years Old	Male
	Anne Arundel**	65+ Years Old	Male
	Baltimore City	65+ Years Old	Male
	Talbot	65+ Years Old	Male
	Baltimore County	65+ Years Old	Female
	Baltimore County	65+ Years Old	Male
	Baltimore City**	65+ Years Old	Male
	Frederick	65+ Years Old	Male
	Prince George's	65+ Years Old	Female
	Anne Arundel	65+ Years Old	Female

**Refers to the jurisdiction where the death occurred. **Refers to a newly listed death ^Refers to updated information from OCME
**+Refers to a newly listed death occurring during the recent excessive heat event (7.17-7.22.19)*

There were six heat-related deaths reported this week. Three deaths occurred during the recent excessive heat event (7.17-7.22.19) and are not presumed or suspected to be homeless individuals.

There have been sixteen heat-related deaths during the reporting period. It is not determined if one of the deaths is presumed or suspected to be a homeless individual. Six of these deaths occurred during the recent excessive heat event (7.17-7.22.19)

Heat Advisory criteria: The National Weather Service will issue a Heat Advisory when the heat index value is expected to reach 105 to 109 degrees within the next 12 to 24 hours. A Heat Advisory may be issued for lower criteria if it is early in the season or during a multiday heat wave. NWS will issue an Excessive Heat Warning when the heat index value is expected to reach or exceed 110 degrees within the next 12 to 24 hours. An Excessive Heat Warning may be issued for lower criteria if it is early in the season or during a multiday heat wave.

Suspected Homeless Death Data: Office of the Chief Medical Examiner (OCME) Field Investigators use the U.S. Department of Health and Human Services (HHS) homeless definition to determine suspected homeless deaths. Homeless deaths are listed as suspected due to the limited information available to the Field Investigators at the time of investigation, which may result in some misclassifications.

For more information about extreme cold and emergency preparedness, follow the Office of Preparedness and Response on Twitter and Facebook.

For media inquiries, please contact the Office of Communications: 410-767-6490

Prepared by:

Office of Preparedness and Response
Maryland Department of Health
300 W. Preston Street, Suite 202
Baltimore, MD 21201

<http://preparedness.health.maryland.gov>

Kristin A. Dietz, MS
Special Projects Coordinator
Office: 410-767-6201
Email: Kristin.Dietz@maryland.gov

Jennifer Stanley, MPH
Epidemiologist, Biosurveillance Program
Office: 410-767-2074
Email: Jennifer.Stanley@maryland.gov

Jessica Acharya, MPH
Career Epidemiology Field Officer
Office: 410-767-6745
Email: Jessica.Goodell@maryland.gov

Sara Barra, MS
Emergency Operations Manager
Office: 410-767-6434
Email: Sara.Barra@maryland.gov

Peter Fotang, MD, MPH
Epidemiologist, Biosurveillance Program
Office: 410-767-8438
Email: Peter.Fotang@maryland.gov