



# MARYLAND Department of Health

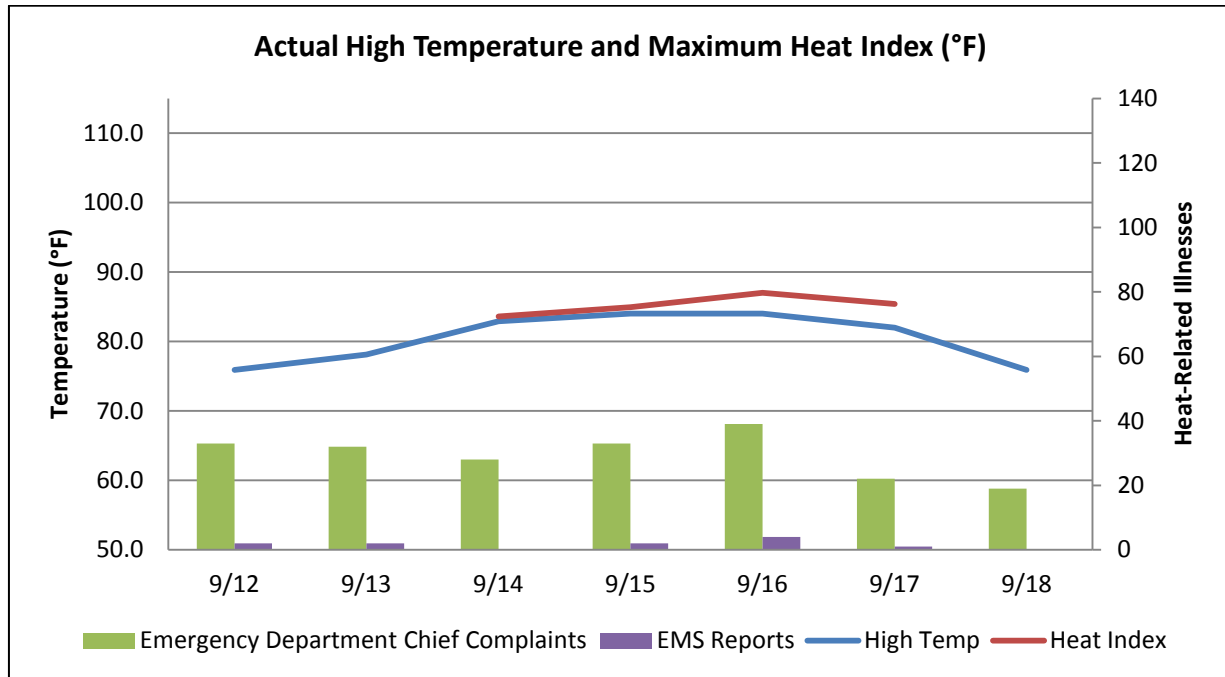
Larry Hogan, Governor · Boyd Rutherford, Lt. Governor · Dennis Schrader, Secretary

## Weekly Heat-related Illness Surveillance Report

September 20, 2017

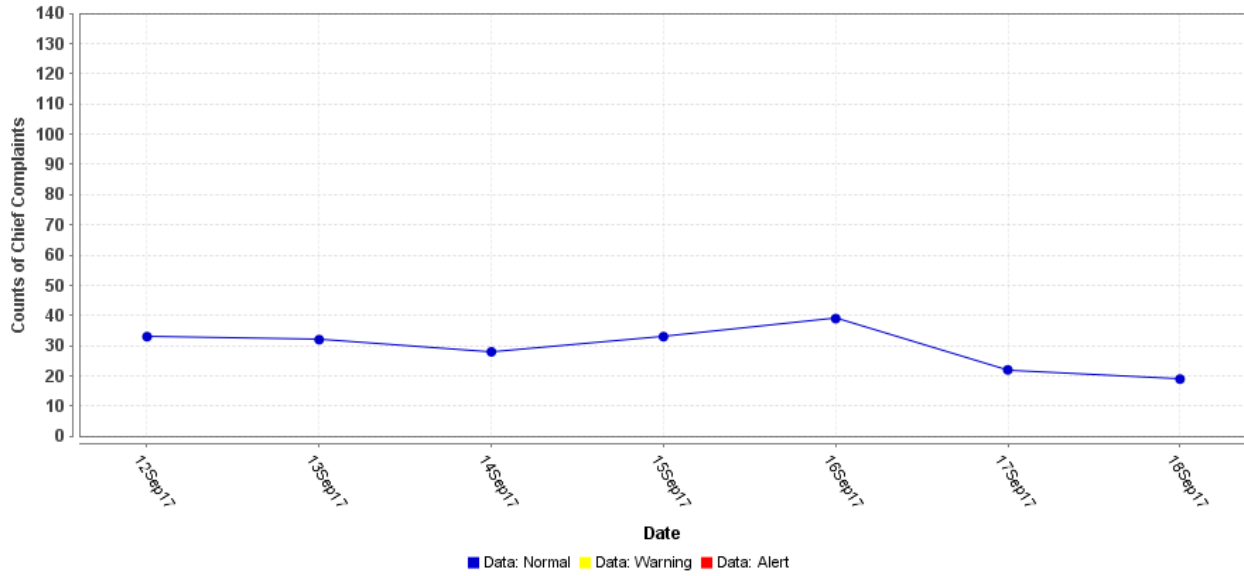
Reporting for September 12, 2017 through September 18, 2017

**National Weather Service Forecast:** No hazardous heat forecast.  
**Heat Advisories Declared During the Previous Week:** 0  
**Total Heat Advisories Declared This Year:** 6



Heat Indexes are calculated for temperatures above 80°F with humidity of 43% or greater.

**Emergency Department Chief Complaints Regarding Heat-related Illness**

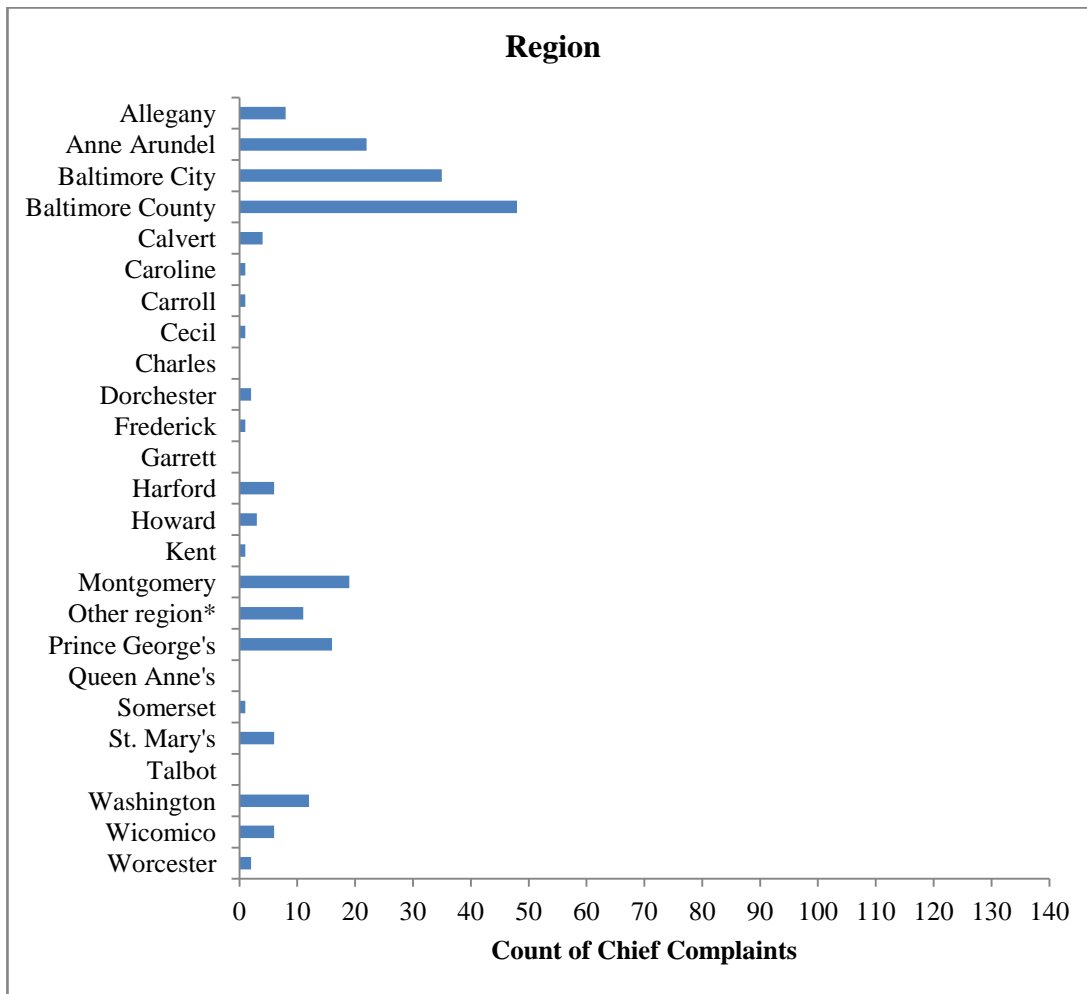


<b>Date</b>	<b>Number of Chief Complaints Regarding Heat-related Illnesses State of Maryland</b>
September 12	33
September 13	32
September 14	28
September 15	33
September 16	39
September 17	22
September 18	19

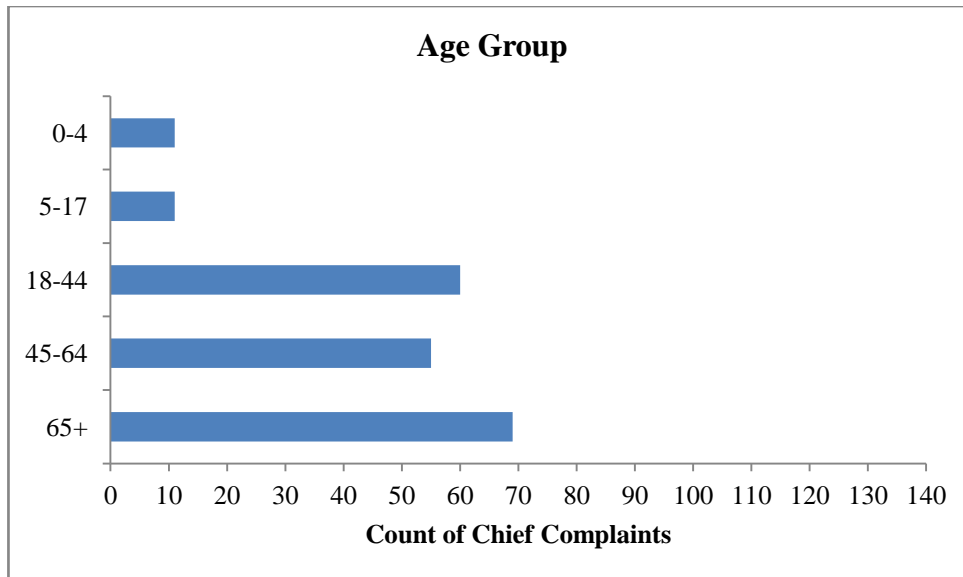
ESSENCE chief complaint query contains the following terms: hyperthermia, heat, dehydration and sunburn

There were no chief complaint clusters identified during the week.

## Geographical and Age Group Distribution of Emergency Department Chief Complaints Regarding Heat-related Illnesses for September 12 through September 18, 2017



\*Geographical distribution of emergency department chief complaints is based on patients' jurisdictions of residence. The "Other Region" category includes patient records without a ZIP code and patients who reside outside of Maryland.



The chart below shows the Heat-related Deaths for the reporting period May 24 through September 18, 2017.

Total Number of Heat-related Deaths	Jurisdiction*	Age Group	Gender
5	Baltimore County	45-64 Years Old	Male
	Anne Arundel	65+ Years Old	Female
	Anne Arundel	65+ Years Old	Male
	Montgomery	65+ Years Old	Female
	Allegany	65+ Years Old	Male

\* Refers to the jurisdiction where the heat-related death occurred. \*\*Refers to a newly listed death

There were no heat-related deaths reported this week.

There have been five heat-related deaths during our reporting period this summer. These deaths are not suspected or presumed to be homeless individuals.

**This Heat-related Illness Report will be our last report for the 2017 Heat Season. The 2017 Heat Season Summary Report will follow on October 11, 2017.**

For media inquiries, please contact the Office of Communications: [410-767-6490](tel:410-767-6490)

**Heat Advisory criteria:** The National Weather Service will issue a Heat Advisory when the heat index value is expected to reach 105 to 109 degrees within the next 12 to 24 hours. A Heat Advisory may be issued for lower criteria if it is early in the season or during a multiday heat wave. NWS will issue an Excessive Heat Warning when the heat index value is expected to reach or exceed 110 degrees within the next 12 to 24 hours. An Excessive Heat Warning may be issued for lower criteria if it is early in the season or during a multiday heat wave.

**Emergency Department Data:** The results from the query used in ESSENCE, an electronic biosurveillance system, to track heat-related illnesses may be an overestimation of the actual burden of illness related to the hot weather. This overestimation is due to the nature of the query, which includes the term dehydration, a condition that may be caused by factors other than heat.

**Emergency Medical Services (EMS) Data:** These data are based on EMS pre-hospital care reports where the EMS provider has selected “Heat Exhaustion/Heat Stroke” and/or “Hyperthermia” as a primary or secondary impression a patient’s illness. This impression is solely based on the signs and symptoms seen by the provider, not on any diagnostic tests. Since these numbers do not include all primary or secondary impressions that may be seen with heat exposure the actual numbers may be low. These data are reported for trending purposes only.

**Suspected Homeless Death Data:** Office of the Chief Medical Examiner (OCME) Field Investigators use the U.S. Department of Health and Human Services (HHS) [homeless definition](#) to determine suspected homeless deaths. Homeless deaths are listed as suspected due to the limited information available to the Field Investigators at the time of investigation, which may result in some misclassifications.

**Prepared by:**

Office of Preparedness and Response  
Maryland Department of Health  
300 W. Preston Street, Suite 202  
Baltimore, MD 21201

<http://preparedness.health.maryland.gov>

Kristin A. McMenamin, MS  
Special Projects Coordinator  
Office: 410-767-6201  
Email: [Kristin.McMenamin@maryland.gov](mailto:Kristin.McMenamin@maryland.gov)

Adejare Atanda, BDS, MPH, CPH  
Biosurveillance Epidemiologist  
Office: 410-767-5668  
Email: [Adejare.Atanda@maryland.gov](mailto:Adejare.Atanda@maryland.gov)

Jessica Goodell  
Epidemiology Field Assignee  
Office: 410-767-6745  
Email: [Jessica.Goodell@maryland.gov](mailto:Jessica.Goodell@maryland.gov)

Sara Barra, MS  
Chief Planner  
Office: 410-767-8438  
Email: [Sara.Barra@maryland.gov](mailto:Sara.Barra@maryland.gov)

Joseph Anelli, MS  
Emergency Operations Manager  
Office: 410-767-6434  
Email: [Joseph.Anelli@maryland.gov](mailto:Joseph.Anelli@maryland.gov)

Carin Morrell  
Public Information Officer  
Office: 410-767-0590  
Email: [Carin.Morrell@maryland.gov](mailto:Carin.Morrell@maryland.gov)

