



STATE OF MARYLAND

DHMH

Department of Health and Mental Hygiene
201 W. Preston Street • Baltimore, Maryland 21201

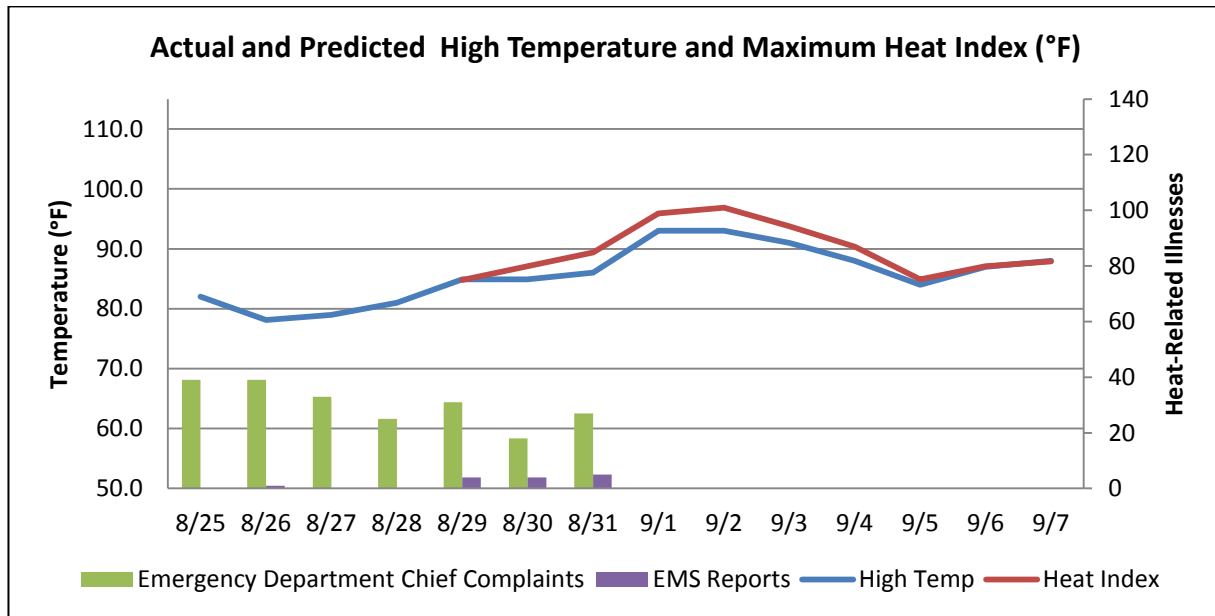
Larry Hogan, Governor – Boyd K. Rutherford, Lt. Governor – Van T. Mitchell, Secretary

Weekly Heat-related Illness Surveillance Report

September 02, 2015

Reporting for 08/25/15 through 08/31/15

National Weather Service Forecast: No hazardous heat forecast.
Heat Advisories Declared During the Previous Week: 0
Total Heat Advisories Declared This Year: 4

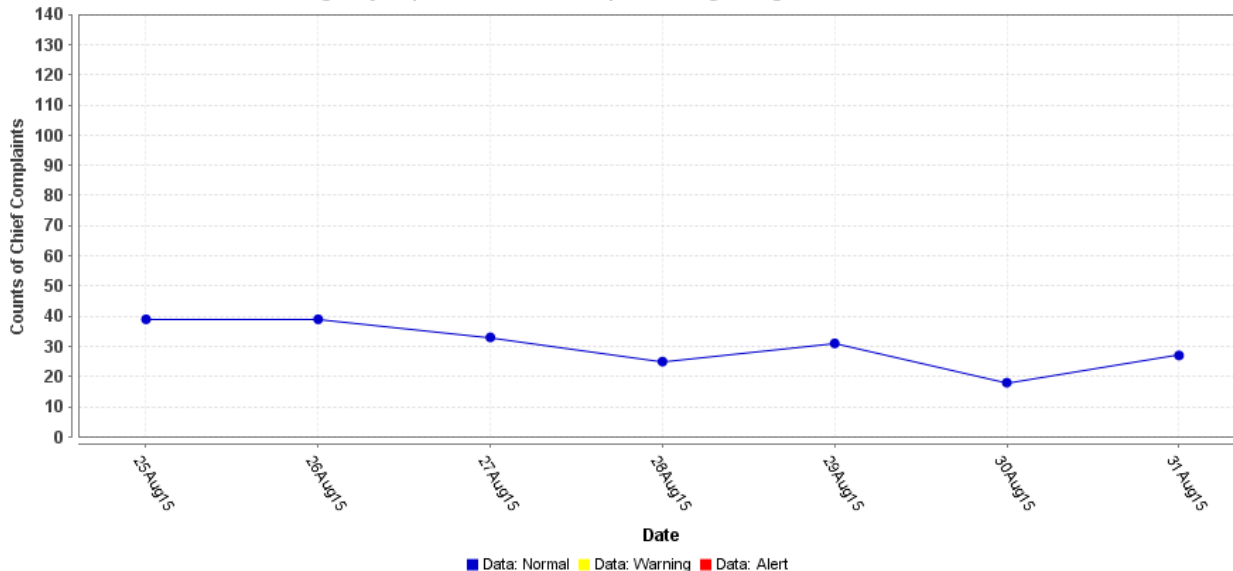


Heat Indexes are calculated for temperatures above 80°F with humidity of 43% or greater.

Note on Emergency Department Data: The results from the query used in ESSENCE, an electronic biosurveillance system, to track heat-related illnesses may be an overestimation of the actual burden of illness related to the hot weather. This overestimation is due to the nature of the query, which includes the term dehydration, a condition that may be caused by factors other than heat.

Note on EMS Data: These data are based on EMS pre-hospital care reports where the EMS provider has selected “Heat Exhaustion/Heat Stroke” and/or “Hyperthermia” as a primary or secondary impression a patient’s illness. This impression is solely based on the signs and symptoms seen by the provider, not on any diagnostic tests. Since these numbers do not include all primary or secondary impressions that may be seen with heat exposure the actual numbers may be low. These data are reported for trending purposes only.

Emergency Department Chief Complaints Regarding Heat-Related Illness

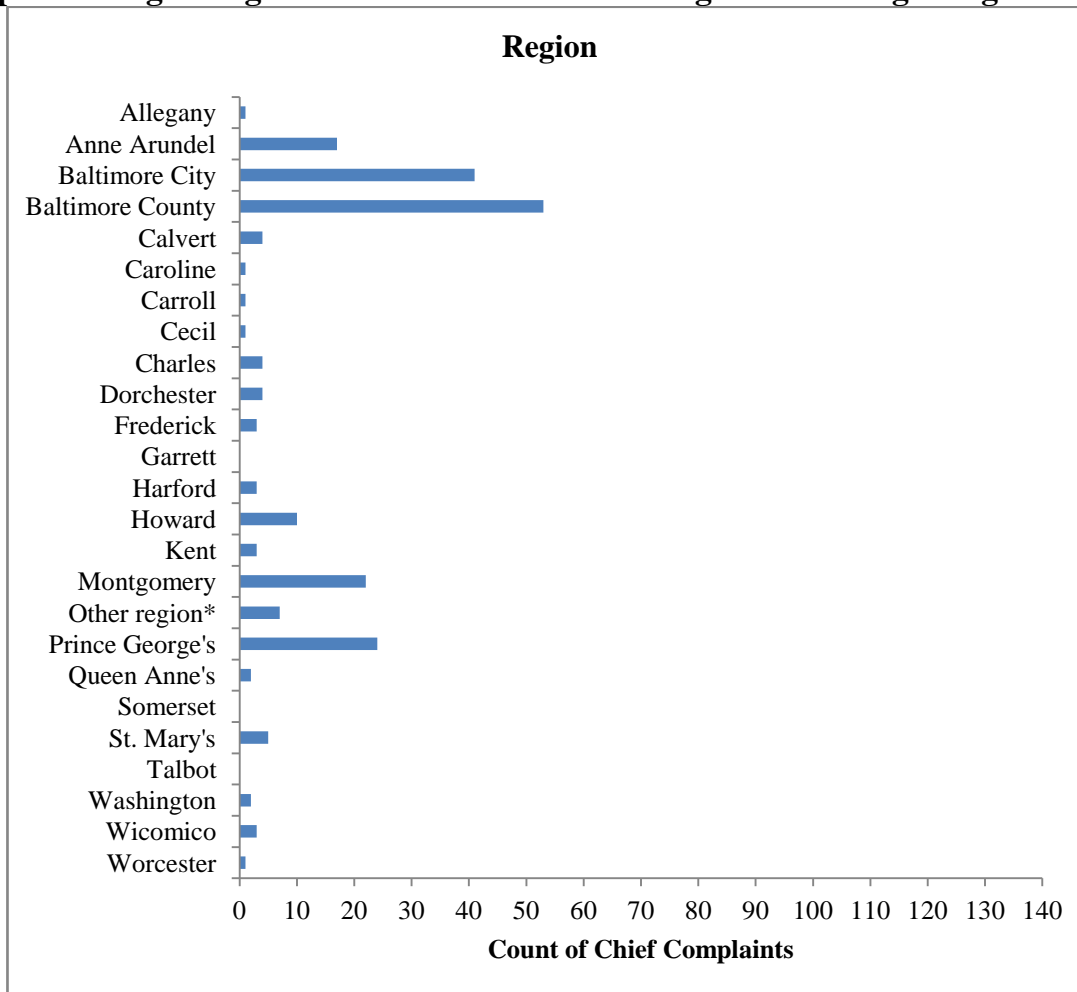


Date	Number of Chief Complaints Regarding Heat-related Illnesses State of Maryland
August 25	39
August 26	39
August 27	33
August 28	25
August 29	31
August 30	18
August 31	27

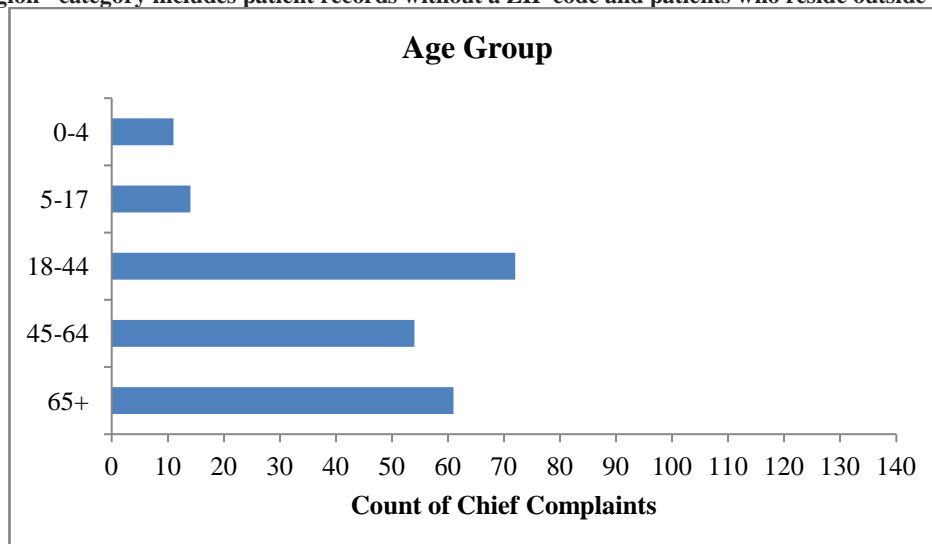
ESSENCE chief complaint query contains the following terms: hyperthermia, heat, dehydration and sunburn

There were no chief complaint clusters identified during the week.

Geographical and Age Group Distribution of Emergency Department Chief Complaints Regarding Heat-related Illnesses for August 25 through August 31, 2015



*Geographical distribution of emergency department chief complaints is based on patients' jurisdictions of residence. The "Other Region" category includes patient records without a ZIP code and patients who reside outside of Maryland.



Total Number of Heat-related Deaths	Jurisdiction*	Age Group	Gender
4	Baltimore City	0-4 Years Old	Female
	Washington	65+ Years Old	Male
	Washington	65+ Years Old	Female
	Prince George's	18-44 Years Old	Male

*Refers to the jurisdiction where the heat-related death occurred.

**Death occurred earlier in the summer.

There were no heat-related deaths reported this week.

There have been 4 heat-related deaths during our reporting period this summer.

For media inquiries, please contact the Office of Communications: [410-767-6490](tel:410-767-6490)

Heat Advisory criteria: The National Weather Service will issue a Heat Advisory when the heat index value is expected to reach 105 to 109 degrees within the next 12 to 24 hours. A Heat Advisory may be issued for lower criteria if it is early in the season or during a multiday heat wave. NWS will issue an Excessive Heat Warning when the heat index value is expected to reach or exceed 110 degrees within the next 12 to 24 hours. An Excessive Heat Warning may be issued for lower criteria if it is early in the season or during a multiday heat wave.

Prepared by:

Office of Preparedness and Response
Maryland Department of Health and Mental Hygiene
300 W. Preston Street, Suite 202
Baltimore, MD 21201

Joseph Anelli, MS
Special Projects Coordinator
Office: 410-767-6201
Email: Joseph.Anelli@maryland.gov

Rachel Gallo, MPH
Exercise Coordinator
Office: 410-767-9647
Email: Rachel.Gallo@maryland.gov

Sara Luell
Public Information Officer
Office: 410-767-0590
Email: Sara.Luell@maryland.gov

Anikah H. Salim, MPH, CPH
Biosurveillance Epidemiologist
Office: 410-767-2074
Email: Anikah.Salim@maryland.gov

Sara Barra, MS
Chief Planner
Office: 410-767-8438
Email: Sara.Barra@maryland.gov