



STATE OF MARYLAND

DHMH

Department of Health and Mental Hygiene
201 W. Preston Street • Baltimore, Maryland 21201

Larry Hogan, Governor – Boyd K. Rutherford, Lt. Governor – Van T. Mitchell, Secretary

Weekly Heat-related Illness Surveillance Report

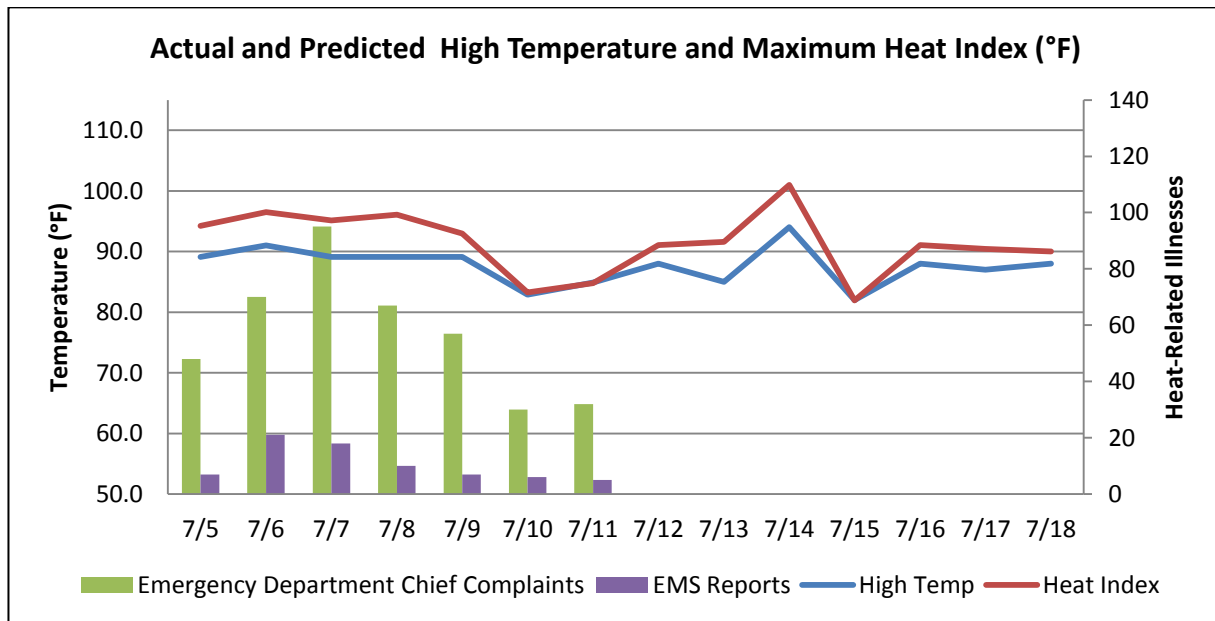
July 13, 2016

Reporting for July 5, 2016 through July 11, 2016

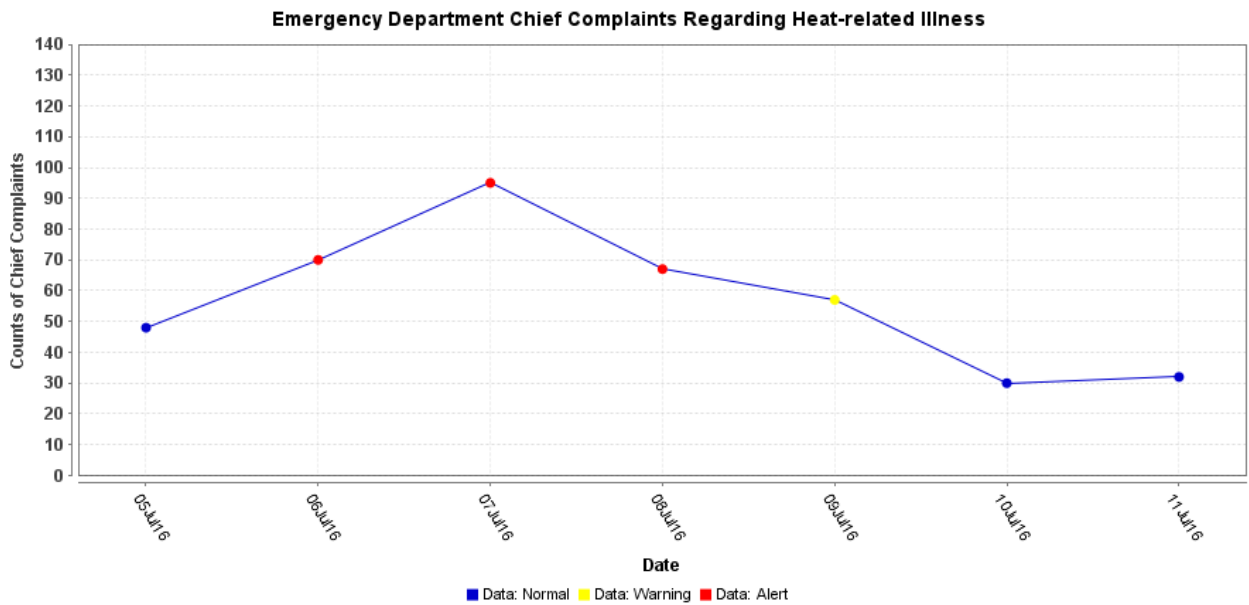
National Weather Service Forecast: No Heat Advisories declared, however conditions favorable to a Heat Advisory have been forecast.

Heat Advisories Declared During the Previous Week: 0

Total Heat Advisories Declared This Year: 0



Heat Indexes are calculated for temperatures above 80°F with humidity of 43% or greater.

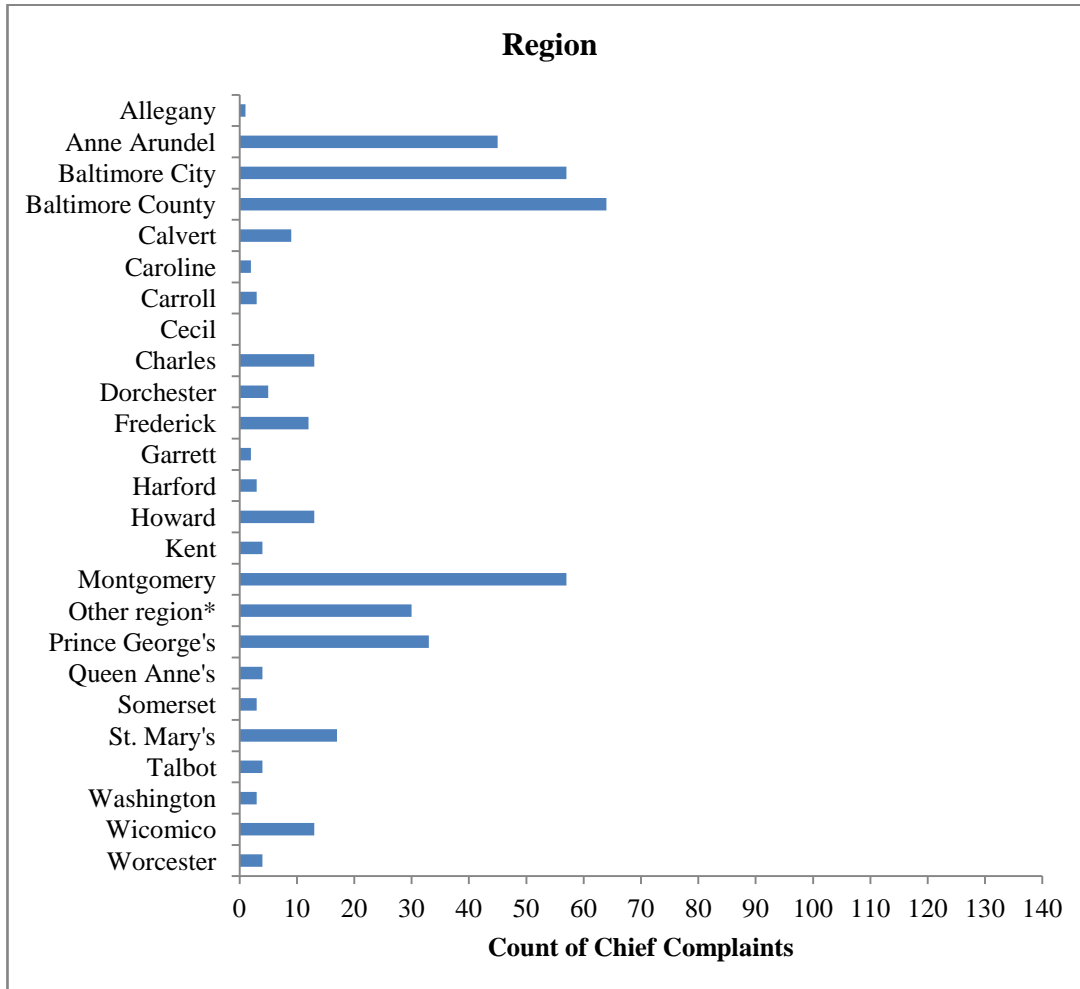


Date	Number of Chief Complaints Regarding Heat-related Illnesses State of Maryland
July 5	48
July 6	70
July 7	95
July 8	67
July 9	57
July 10	30
July 11	32

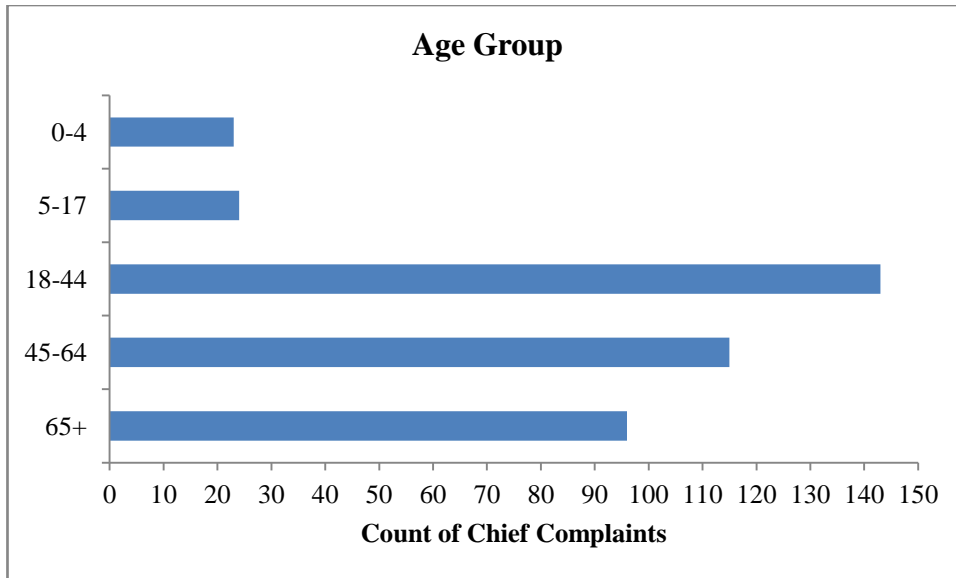
ESSENCE chief complaint query contains the following terms: hyperthermia, heat, dehydration and sunburn

There were no chief complaint clusters identified during the week.

Geographical and Age Group Distribution of Emergency Department Chief Complaints Regarding Heat-related Illnesses for July 5 through July 11, 2016



*Geographical distribution of emergency department chief complaints is based on patients' jurisdictions of residence. The "Other Region" category includes patient records without a ZIP code and patients who reside outside of Maryland.



Death Total	Jurisdiction	Age Group	Gender
3	Baltimore City	65+	Male
	Anne Arundel	65+	Female
	Anne Arundel	45-64	Female

There were no heat-related deaths reported this week.

There have been 3 heat-related deaths during our reporting period this summer.

No deaths are suspected or presumed homeless individuals.

For media inquiries, please contact the Office of Communications: [410-767-6490](tel:410-767-6490)

Heat Advisory criteria: The National Weather Service will issue a Heat Advisory when the heat index value is expected to reach 105 to 109 degrees Fahrenheit within the next 12 to 24 hours. A Heat Advisory may be issued for lower criteria if it is early in the season or during a multiday heat wave. NWS will issue an Excessive Heat Warning when the heat index value is expected to reach or exceed 110 degrees Fahrenheit within the next 12 to 24 hours. An Excessive Heat Warning may be issued for lower criteria if it is early in the season or during a multiday heat wave.

Emergency Department Data: The results from the query used in ESSENCE, an electronic biosurveillance system, to track heat-related illnesses may be an overestimation of the actual burden of illness related to the hot weather. This overestimation is due to the nature of the query, which includes the term dehydration, a condition that may be caused by factors other than heat.

Emergency Medical Services (EMS) Data: These data are based on EMS pre-hospital care reports where the EMS provider has selected “Heat Exhaustion/Heat Stroke” and/or “Hyperthermia” as a primary or

secondary impression a patient's illness. This impression is solely based on the signs and symptoms seen by the provider, not on any diagnostic tests. Since these numbers do not include all primary or secondary impressions that may be seen with heat exposure the actual numbers may be low. These data are reported for trending purposes only.

Suspected Homeless Death Data: Office of the Chief Medical Examiner (OCME) Field Investigators use the U.S. Department of Health and Human Services (HHS) [homeless definition](#) to determine suspected homeless deaths. Homeless deaths are listed as suspected due to the limited information available to the Field Investigators at the time of investigation, which may result in some misclassifications.

Prepared by:

Office of Preparedness and Response
Maryland Department of Health and Mental Hygiene
300 W. Preston Street, Suite 202
Baltimore, MD 21201

Joseph Anelli, MS
Special Projects Coordinator
Office: 410-767-6201
Email: Joseph.Anelli@maryland.gov

Anikah H. Salim, MPH, CPH
Biosurveillance Epidemiologist
Office: 410-767-2074
Email: Anikah.Salim@maryland.gov

Sara Barra, MS
Chief Planner
Office: 410-767-8438
Email: Sara.Barra@maryland.gov

Jessica Goodell, MPH
Epidemiology Field Assignee
Office: 410-767-6745
Email: Jessica.Goodell@maryland.gov