



# MARYLAND Department of Health

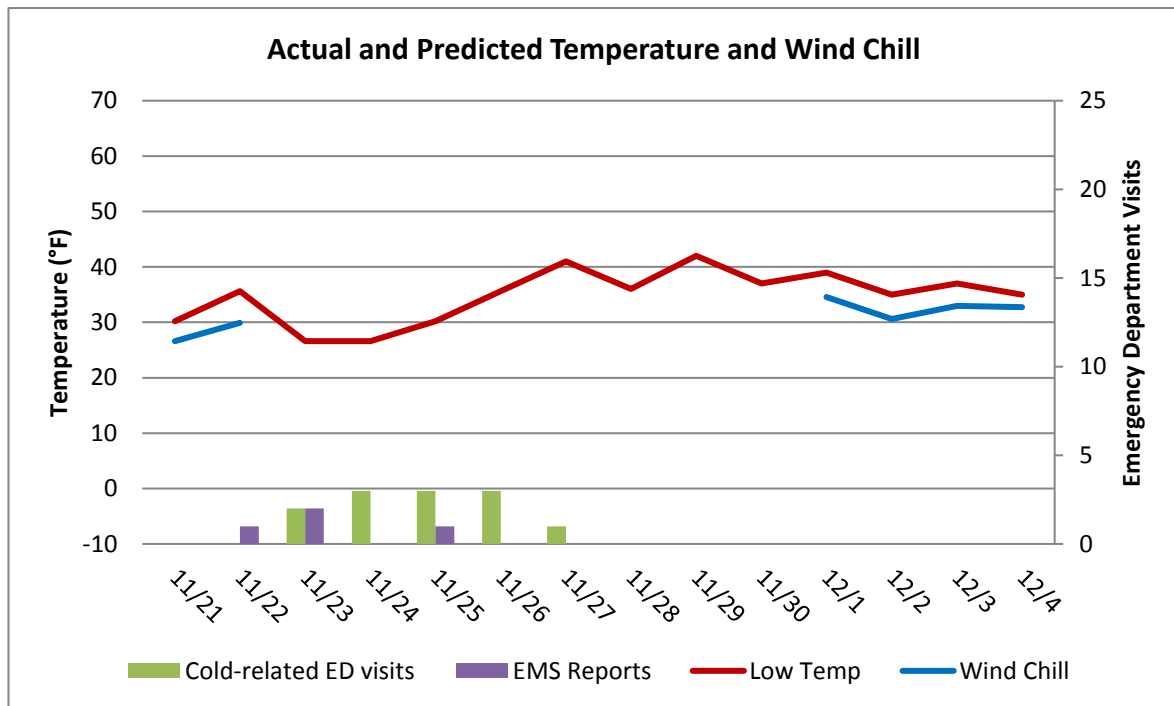
Larry Hogan, Governor · Boyd Rutherford, Lt. Governor · Dennis Schrader, Secretary

## Weekly Cold-related Illness Surveillance Report

November 29, 2017

Reporting for November 21, 2017 to November 27, 2017

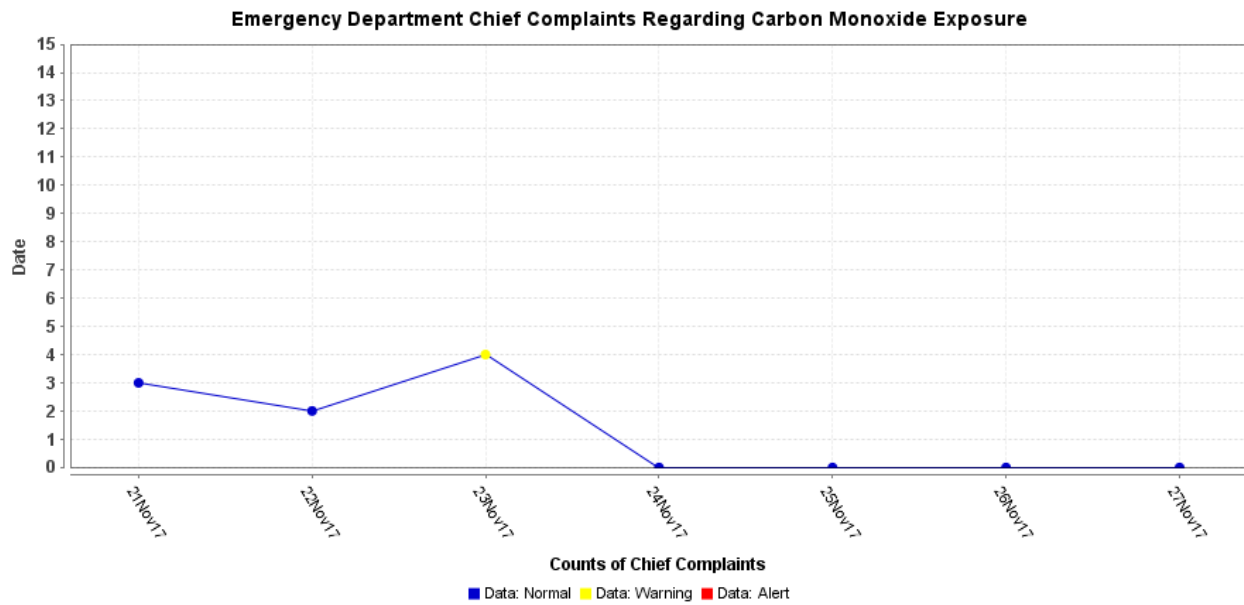
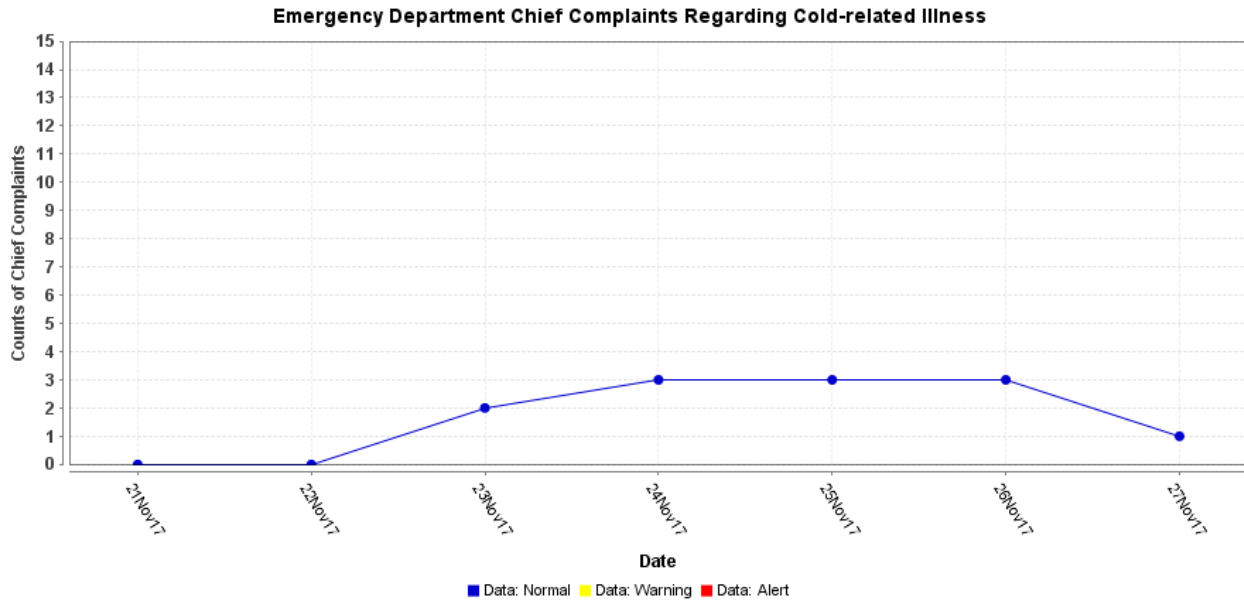
**National Weather Service Forecast:** No current advisories.  
**Wind Chill Advisories Declared During the Previous Week:** 0  
**Total Wind Chill Advisories Declared This Winter:** 0



Wind Chill is only calculated for temperatures below 50°F and wind speeds above 3 mph

**Note on Emergency Department Data:** The results from the query used in ESSENCE, an electronic biosurveillance system, to track cold-related illnesses may be an overestimation of the actual burden of illness related to the cold weather. This overestimation is due to the nature of the query, which includes the term hypothermia and frostbite.

**Note on EMS Data:** These data are based on EMS pre-hospital care reports where the EMS provider has selected hypothermia as a primary or secondary impression a patient’s illness. This impression is solely based on the signs and symptoms seen by the provider, not on any diagnostic tests. Since these numbers do not include all primary or secondary impressions that may be seen with cold exposure, the actual numbers may be low. These data are reported for trending purposes only.

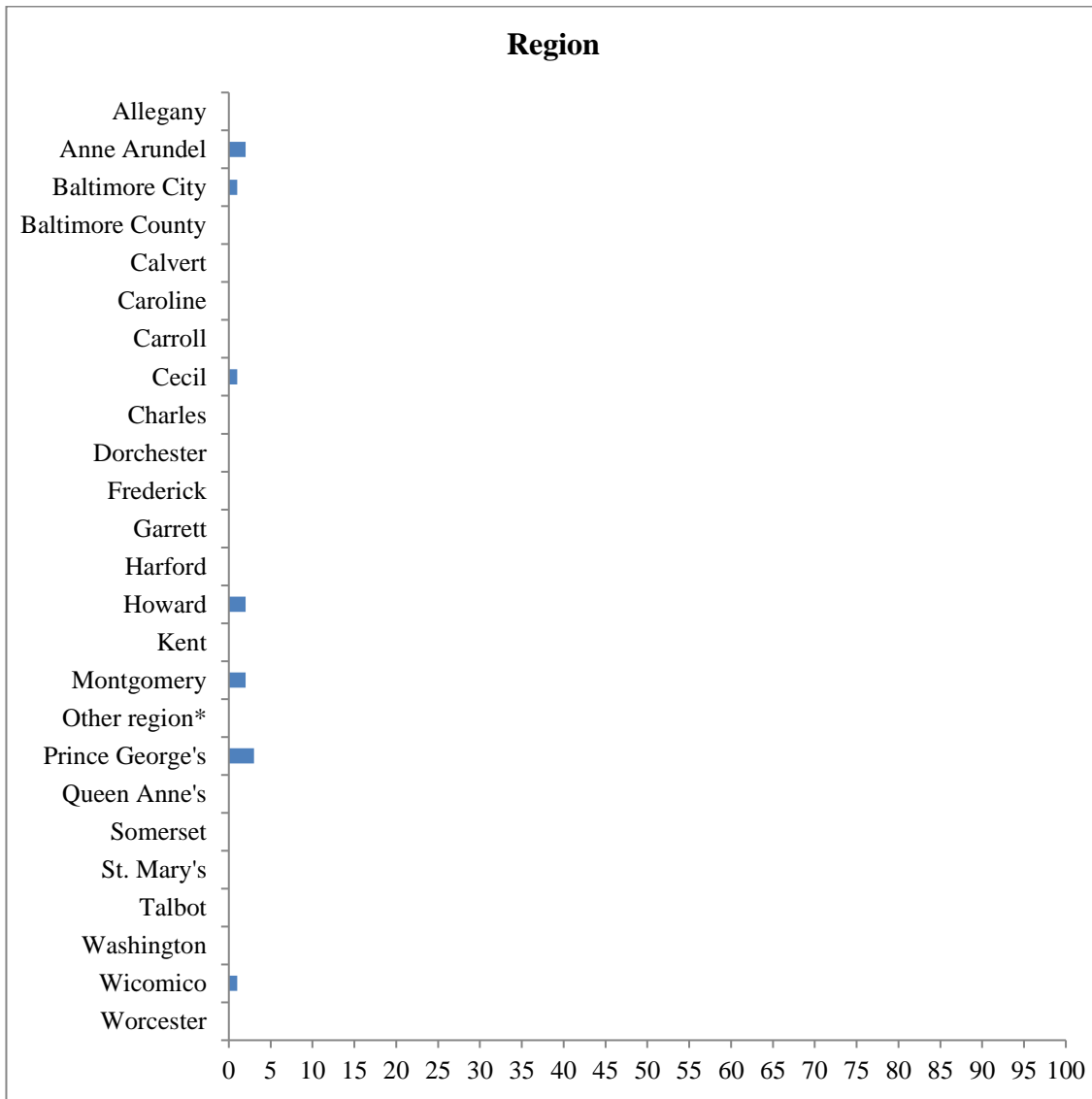


Date	Number of Chief Complaints Regarding Cold-related Illness	Number of Chief Complaints Regarding Carbon Monoxide Exposure
November 21	0	3
November 22	0	2
November 23	2	4
November 24	3	0
November 25	3	0
November 26	3	0
November 27	1	0

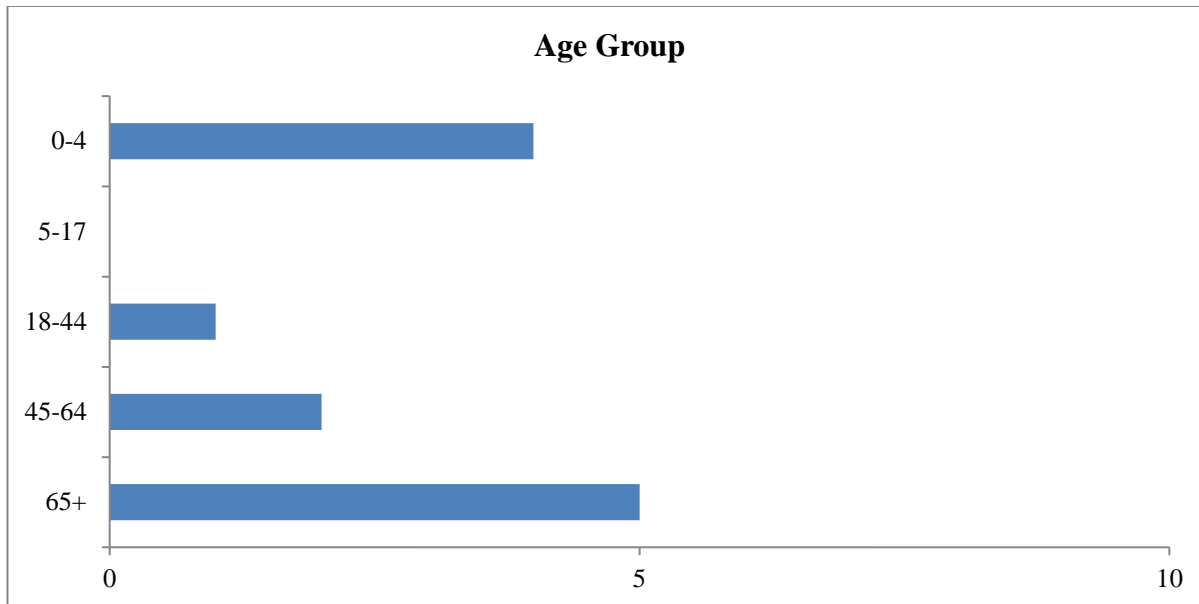
**\*Note: ESSENCE chief complaint query for cold-related illness contains the following terms: frostbite, frostnip, hypothermia, chilblain, and trench foot**

There was one chief complaint cluster identified this week regarding carbon monoxide exposure. The respective jurisdiction has followed up on this cluster.

**Geographical and Age Group Distribution of Emergency Department Chief Complaints Regarding Cold-related Illnesses for November 21 through November 27, 2017**



**\*Geographical distribution of emergency department chief complaints is based on patients' jurisdictions of residence. The "Other Region" category includes patient records without a ZIP code and patients who reside outside of Maryland.**



Total Number of Cold-related Deaths	Jurisdiction*	Age Group	Gender
0			

\*Refers to the jurisdiction where the death occurred. \*\*Refers to a newly listed death

There were no cold-related deaths reported this week.

There have been no cold-related deaths during the reporting period this winter.

For media inquiries, please contact the Office of Communications: [410-767-6490](tel:410-767-6490)

**Wind Chill Advisory/Warning Criteria:** The National Weather Service issues a Wind Chill Advisory for projected wind chill factors of -5°F to -25°F, and a Wind Chill Warning when the projected wind chill is for -25° or less.

**Suspected Homeless Death Data:** Office of the Chief Medical Examiner (OCME) Field Investigators use the U.S. Department of Health and Human Services (HHS) [homeless definition](#) to determine suspected homeless deaths. Homeless deaths are listed as suspected due to the limited information available to the Field Investigators at the time of investigation, which may result in some misclassifications.

For more information about extreme cold and emergency preparedness, follow the Office of Preparedness and Response on [Twitter](#) and [Facebook](#).

**Prepared by:**

Office of Preparedness and Response  
Maryland Department of Health  
300 W. Preston Street, Suite 202  
Baltimore, MD 21201

<http://preparedness.health.maryland.gov>

Kristin A. McMenamain, MS  
Special Projects Coordinator  
Office: 410-767-6201  
Email: [Kristin.McMenamin@maryland.gov](mailto:Kristin.McMenamin@maryland.gov)

Adejare Atanda, DDS, MPH, CPH  
Biosurveillance Epidemiologist  
Office: 410-767-5668  
Email: [Adejare.Atanda@maryland.gov](mailto:Adejare.Atanda@maryland.gov)

Jessica Goodell  
Epidemiology Field Assignee  
Office: 410-767- 6745  
Email: [Jessica.Goodell@maryland.gov](mailto:Jessica.Goodell@maryland.gov)

Sara Barra, MS  
Chief Planner  
Office: 410-767- 8438  
Email: [Sara.Barra@maryland.gov](mailto:Sara.Barra@maryland.gov)

Joseph Anelli, MS  
Emergency Operations Manager  
Office: 410-767-6434  
Email: [Joseph.Anelli@maryland.gov](mailto:Joseph.Anelli@maryland.gov)

Carin Morrell  
Public Information Officer  
Office: 410-767-0590  
Email: [Carin.Morrell@maryland.gov](mailto:Carin.Morrell@maryland.gov)