

Facility Tracking Spreadsheet for Emergency Preparedness and Response

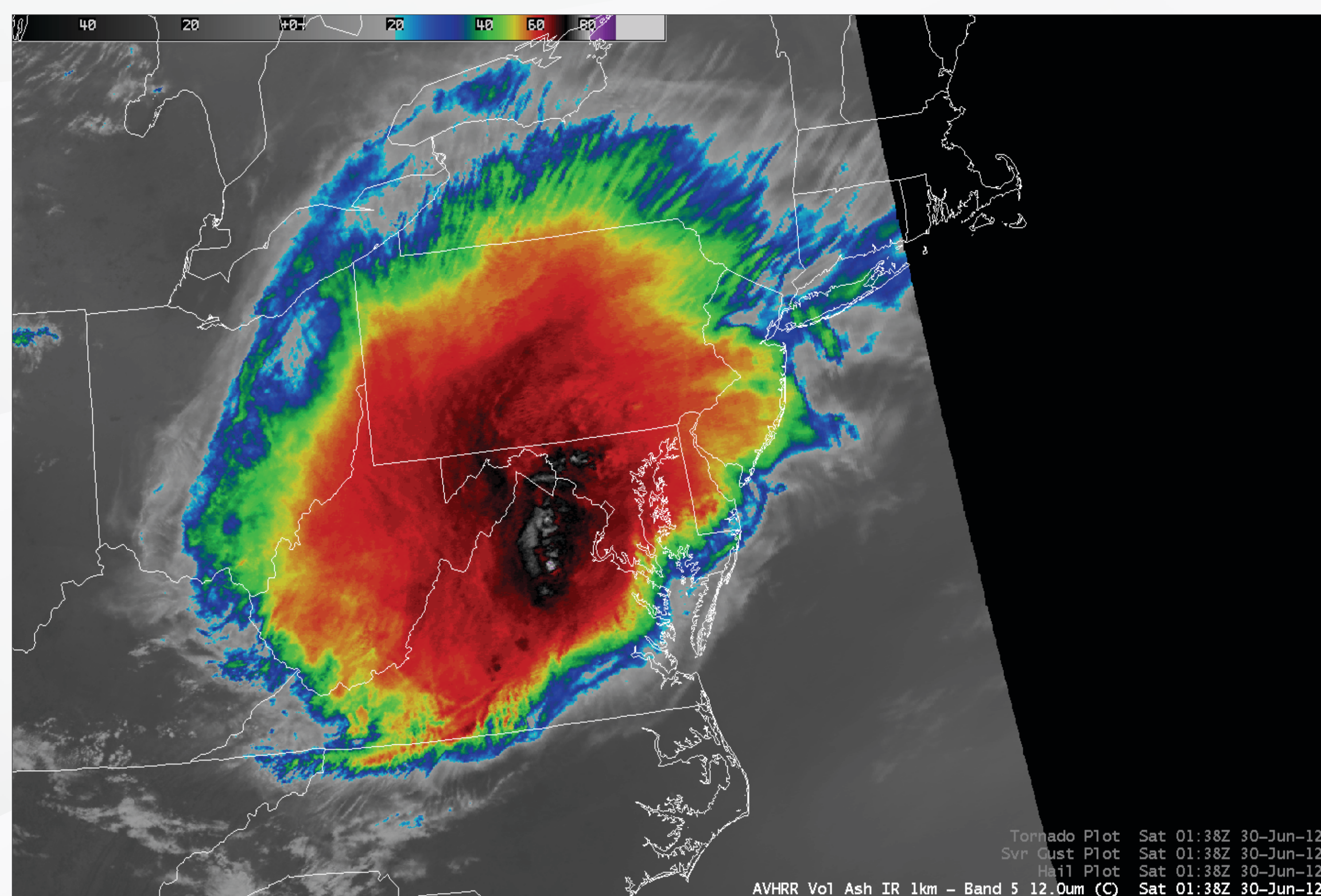
Kristin A. McMenamin, MS | Joseph Anelli, MS | Veronica Black, MBA | Sherry Adams, RN

Objectives

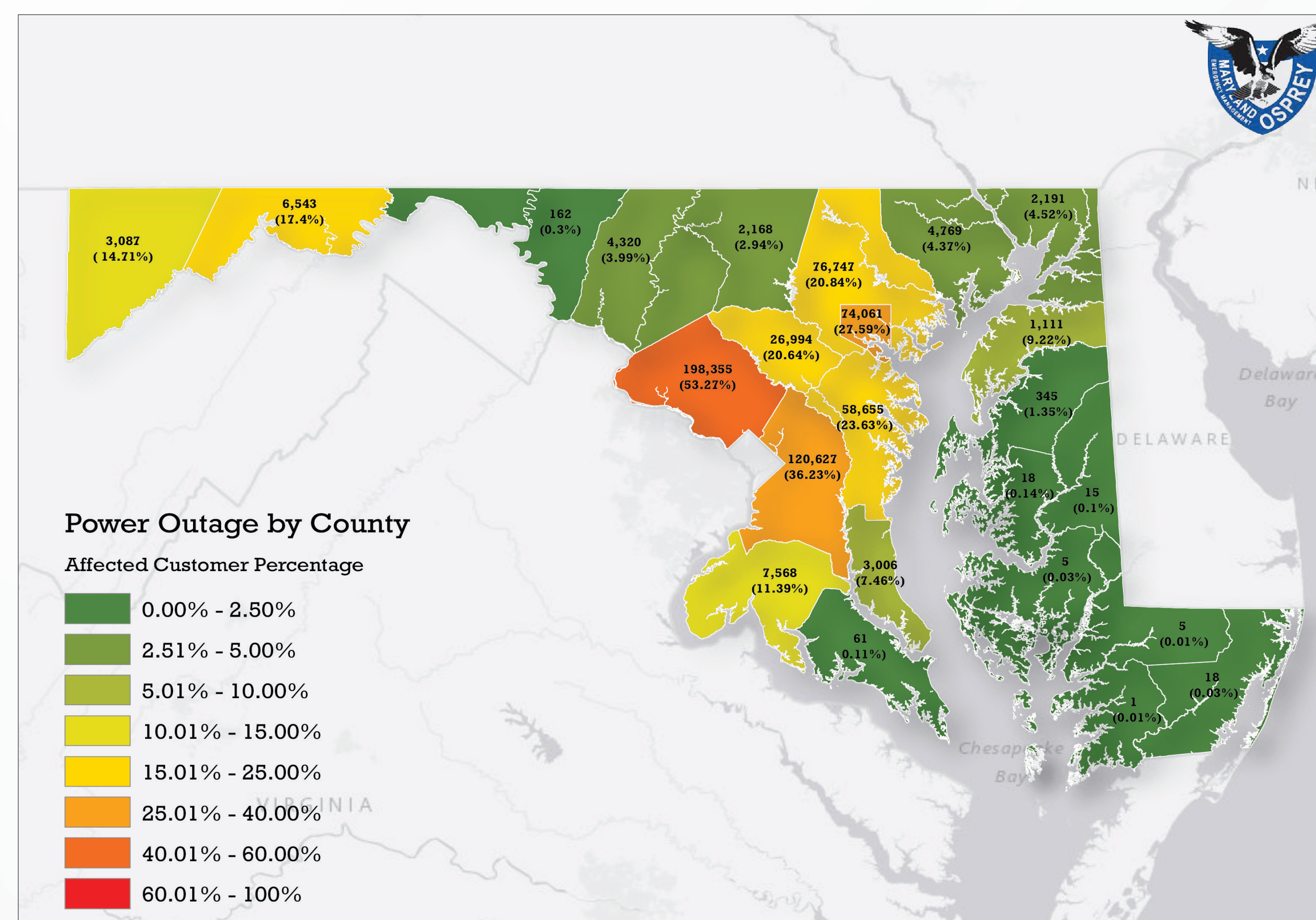
- » Describe the process by which the Office of Preparedness & Response (OP&R) and jurisdictional partners coordinated to build the Facility Tracking Spreadsheet project
- » Describe lessons learned from the quarterly webinars conducted versus performance during real life events and incidents
- » Describe ongoing efforts to engage jurisdictional partners on the importance of facility tracking

Background

The Derecho, a weather event that happened from June 29 to July 8, 2012, consisting of a fast-moving band of thunderstorms and straight-line winds, caused widespread wind damage and power outages.



More than one million customers, or one in six Maryland residents, lost power at the height of the storm. This weather event was followed by more than a week of extreme heat throughout most of the state, with heat indices over 105 degrees Fahrenheit in some areas. There were 24 reported heat-related deaths connected to this event and the State Emergency Operations Center (SEOC) was activated for nine days.



Methods

The Facility Tracking Spreadsheet was created following the 2012 Derecho to help track the power-related issues of vulnerable facilities. Local health departments (LHDs) were charged with the responsibility for tracking nursing homes, assisted living, and hospice facilities. The Office of Health Care Quality (OHCQ) was tasked with tracking Dialysis Centers. The Developmental Disabilities Administration (DDA) and the Behavioral Health Administration (BHA) were assigned responsibility for tracking their own centers. This system contains all regulated facilities divided by local jurisdiction and is updated each month by OP&R with information provided by OHCQ.

Example Copy of Master Spreadsheet 091412

A	B	C	D	E	F	G	H
Status	Local Comments	State Comments	Tracking Jurisdiction	Facility Name	Program Name	Facility Address	Facility
2			CALVERT COUNTY	3 BEA'S ASSISTED LIVING	Assisted Living Programs	544 BARNACLE LANE	LUSBY
3			CALVERT COUNTY	ASBURY SOLOMONS ISLAND	Assisted Living Programs	11750 ASBURY CIRCLE	SOLOMO
4			CALVERT COUNTY	ASSISTED LIVING AT YELLOW BANK	Assisted Living Programs	3825 YELLOW BANK ROAD	DUNKIRK
5			CALVERT COUNTY	CARIBBEAN BREEZE ASSISTED LIVING	Assisted Living Programs	2200 DEER RUN COURT	HUNTING
6			CALVERT COUNTY	CARIBBEAN BREEZE ASSISTED LIVING II	Assisted Living Programs	4300 ESTATE DRIVE	HUNTING
7			CALVERT COUNTY	CARIBBEAN BREEZE ASSISTED LIVING III	Assisted Living Programs	255 SKINNERS TURN ROAD	OWINGS
8			CALVERT COUNTY	HARBOR VIEW ASSISTED LIVING	Assisted Living Programs	1321 FLAG HARBOR BOULEVARD	SAINT LE
9			CALVERT COUNTY	HERMITAGE AT ST. JOHN'S CREEK	Assisted Living Programs	13325 DOWELL ROAD, P.O. BOX 1509	SOLOMO
10			CALVERT COUNTY	IN GOD'S CARE - A MIRACLE HOUSE	Assisted Living Programs	2365 DELIGHT COURT	ST LEON
11			CALVERT COUNTY	INNS OF EVERGREEN ASSISTED LIVING, LLC	Assisted Living Programs	119 COVE POINT ROAD	LUSBY
12			CALVERT COUNTY	LOVING CARE SENIOR SERVICES, INC	Assisted Living Programs	242 LAUREL DRIVE	LUSBY
13			CALVERT COUNTY	NCF GUARDIAN HOME	Assisted Living Programs	9230 OWINGS MANOR COURT	OWINGS
14			CALVERT COUNTY	Calvert Hospice, Inc.	Hospice Care Programs	238 Merrimac Court	Prince Fr
15			CALVERT COUNTY	ASBURY SOLOMONS	Comprehensive Care Faci	11750 ASBURY CIRCLE	SOLOMO
16			CALVERT COUNTY	CALVERT COUNTY NURSING CTR.	Comprehensive Care Faci	85 HOSPITAL ROAD	PRINCE F
17			CALVERT COUNTY	CALVERT MEMORIAL HOSPITAL TRANSITIONAL CARE UNIT	Comprehensive Care Faci	100 HOSPITAL ROAD	PRINCE F
18			CALVERT COUNTY	SOLOMONS NURSING CENTER	Comprehensive Care Faci	13325 DOWELL RD, P.O. BOX 1509	SOLOMO
19	3 no generator		ALLEGANY COUNTY	ASSISTED LIVING AT FROSTBURG VILLAGE	Assisted Living Programs	100 VILLAGE PARKWAY	FROSTBL
20			ALLEGANY COUNTY	COUNTRYHOUSE LLC	Assisted Living Programs	15 CUMBERLAND STREET	CUMBER
21			ALLEGANY COUNTY	EVANS ASSISTED LIVING	Assisted Living Programs	631 BRADDOCK AVENUE	LAVALLE
22			ALLEGANY COUNTY	GOLDEN LIVING COMMUNITY - CUMBERLAND	Assisted Living Programs	508 WHITE AVENUE	CUMBER
23			ALLEGANY COUNTY	KENSINGTON ALGONQUIN, LLC	Assisted Living Programs	ONE BALTIMORE STREET	CUMBER
24			ALLEGANY COUNTY	NEW HOPE I	Assisted Living Programs	12506 SUNSHINE DRIVE	CUMBER
25			ALLEGANY COUNTY	NEW HOPE TWO	Assisted Living Programs	11609 BIERMAN DRIVE, SE	CUMBER
26			ALLEGANY COUNTY	SINCERELY YOURS ASSISTED LIVING	Assisted Living Programs	15900 WILLIAMS ROAD SOUTHEAST	CUMBER
27			ALLEGANY COUNTY	WILLOWBROOK SQUARE	Assisted Living Programs	10102 COUNTRY CLUB ROAD	CUMBER
28			ALLEGANY COUNTY	Western Maryland System Hospice Services	Hospice Care Programs	1050 Industrial Blvd, Ste 19	Cumbarc
29			ALLEGANY COUNTY	DEVILIN MANOR NURSING HOME	Comprehensive Care Faci	10301 NORTH EAST CHRISTIE ROAD	CUMBER

Results

This system is used in the event of a state activation involving power outages or potential damage to facilities. LHDs are asked to begin tracking facilities using local spreadsheets when outages in their jurisdictions reach 20 percent, or at the discretion of the Maryland Department of Health (MDH) leadership. However, LHDs may also begin tracking at any time, such as when there is a localized event involving power outages or potential damage to facilities.

Local spreadsheets are linked to the master Facility Tracking Spreadsheet accessible to state partners, including the SEOC, ensuring situational awareness. If the local spreadsheet is being used when the SEOC is not in operation, the LHD must advise OP&R that it is in use.

Conclusion

Based on lessons learned and legislation following the 2012 Derecho, a secure, online spreadsheet was developed that allows MDH and all 24 LHDs to update the status of vulnerable facilities in real time. The LHDs can also share that spreadsheet with state and local emergency management for priority power restoration. The Facility Tracking Spreadsheet was most recently utilized March 1 to 4, 2018, during a Maryland Nor'easter/Wind Event, also known as Winter Storm Riley. This weather event, with 60-70 mile per hour winds and three to six inches of snow lead to more than 500,000 power outages statewide. Some outages took over a week to be restored. By using the Spreadsheet, OP&R was able to keep current with facility power outages and address critical needs.

To engage partners, OP&R facilitates quarterly refresher webinars and annual protocol updates, ensuring partners continue to be familiar with the Facility Tracking Spreadsheet and both operational and tactical issues. Lessons learned continue to drive quality improvements, such as the addition of quarterly accessibility approvals and the addition of Emergency Contact and Phone columns for each facility.

Acknowledgments

Special thanks to MDH leadership, our partners at the Maryland Emergency Management Agency (MEMA), OHCQ, and our LHDs for assistance in ensuring the Spreadsheet information is accurate and up to date.