



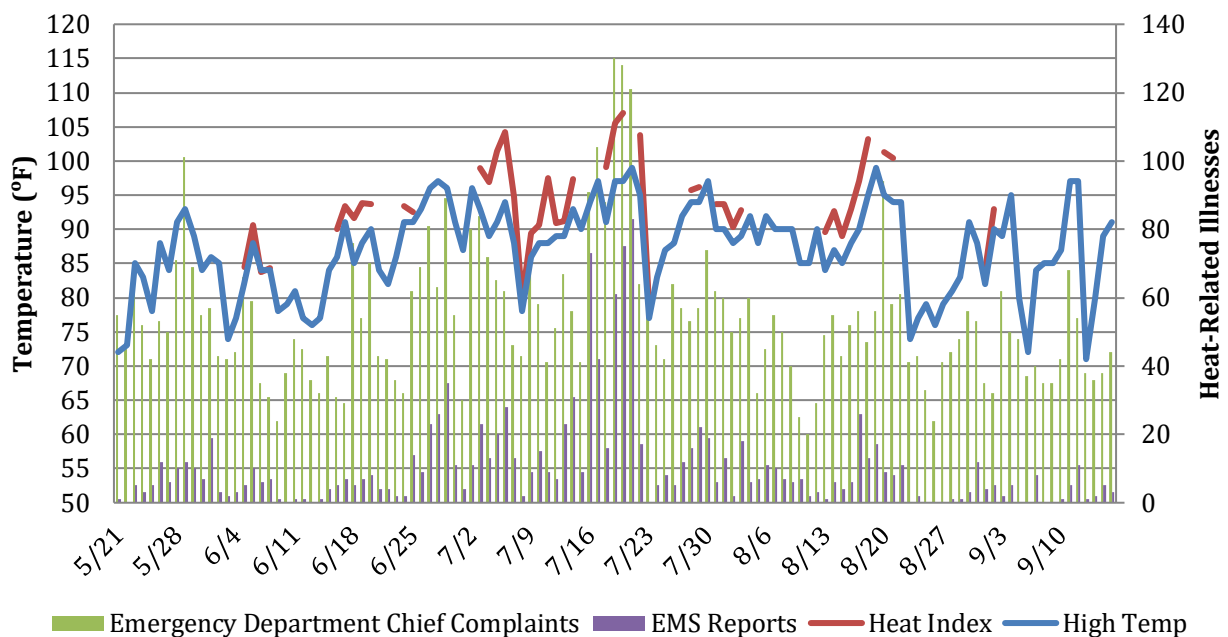
2019 Heat-related Illness Surveillance Summary Report

October 9, 2019

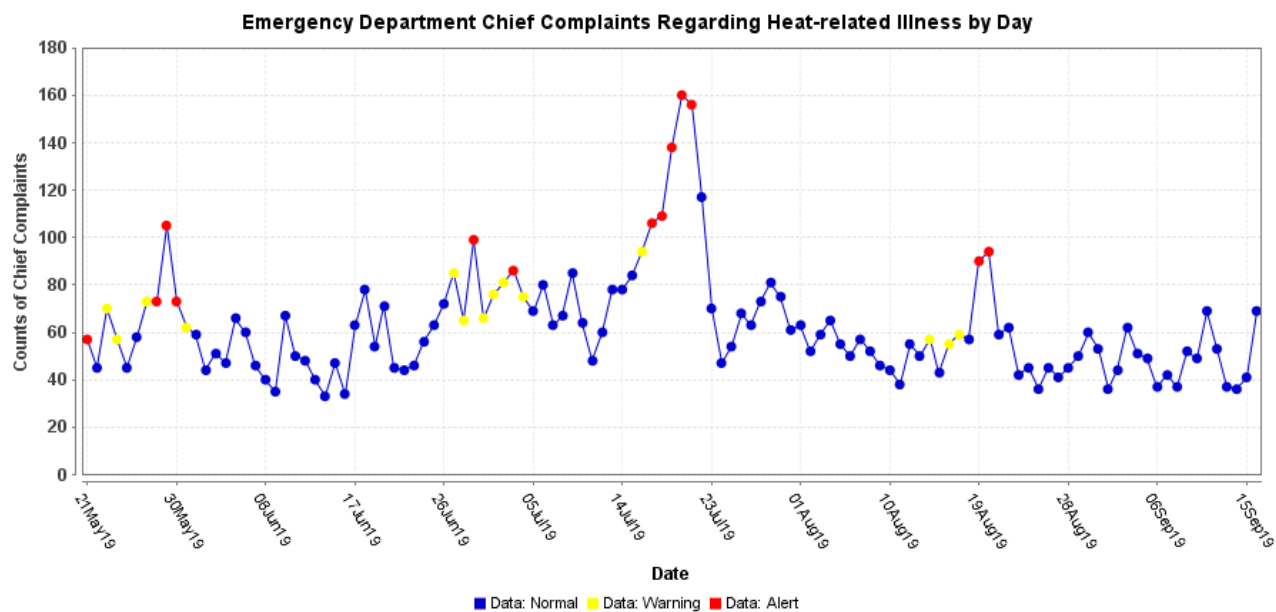
Reporting for May 21, 2019 to September 16, 2019

Total Heat Advisories Declared This Year: 6 (7/17, 7/18, 7/19, 7/21, 7/22)

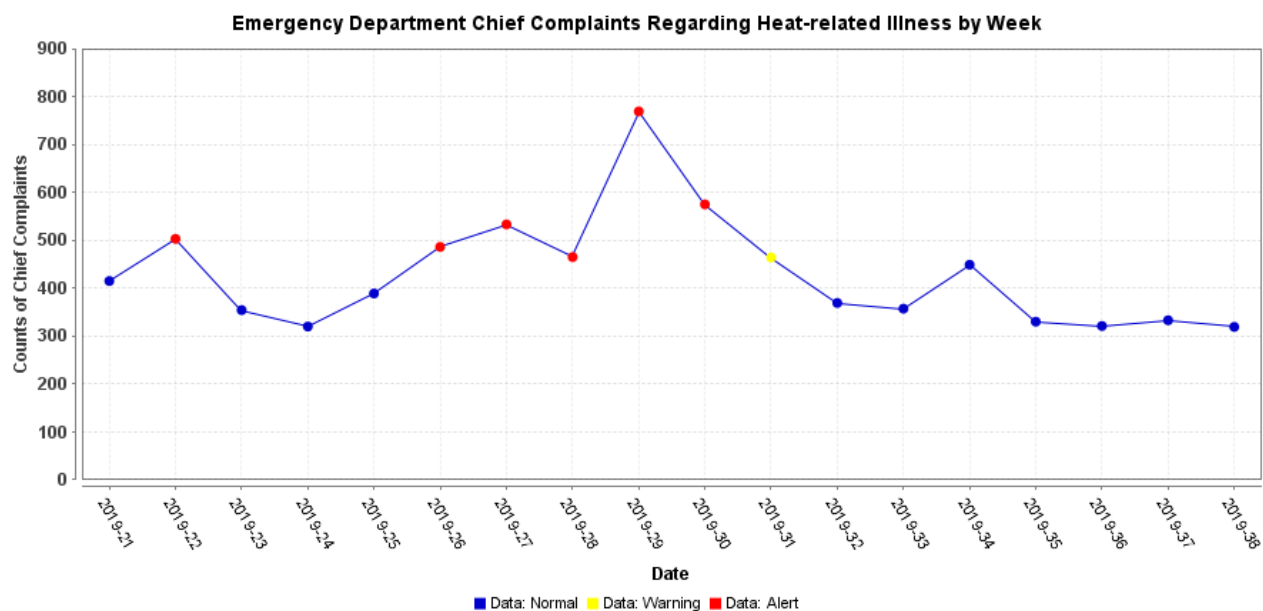
Temperature Data May-September 2019



Note: Heat Indexes are only calculated for temperatures above 80°F with humidity of 43% or greater



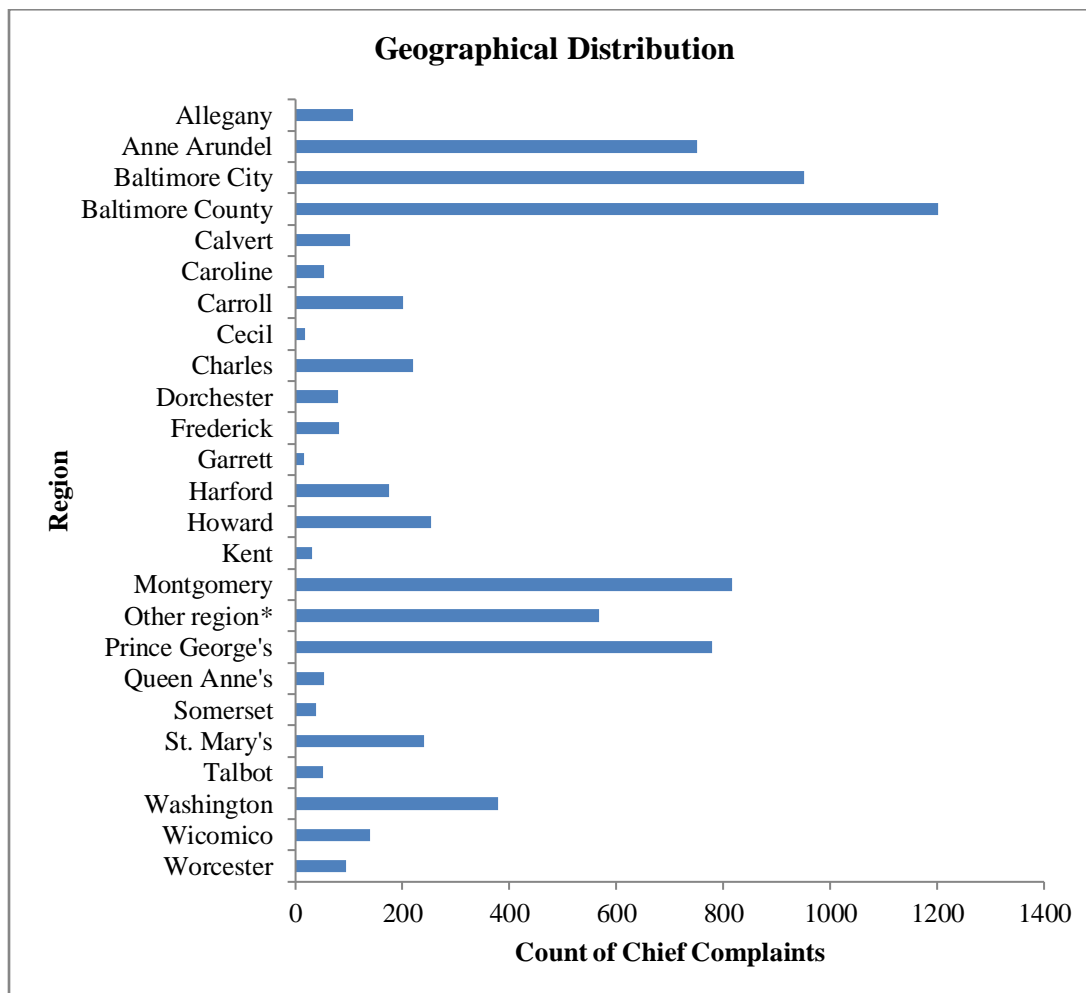
**Note: ESSENCE chief complaint query for heat-related illness contains the following terms: hyperthermia, heat, dehydration and sunburn*



**Note: ESSENCE chief complaint query for heat-related illness contains the following terms: hyperthermia, heat, dehydration and sunburn*

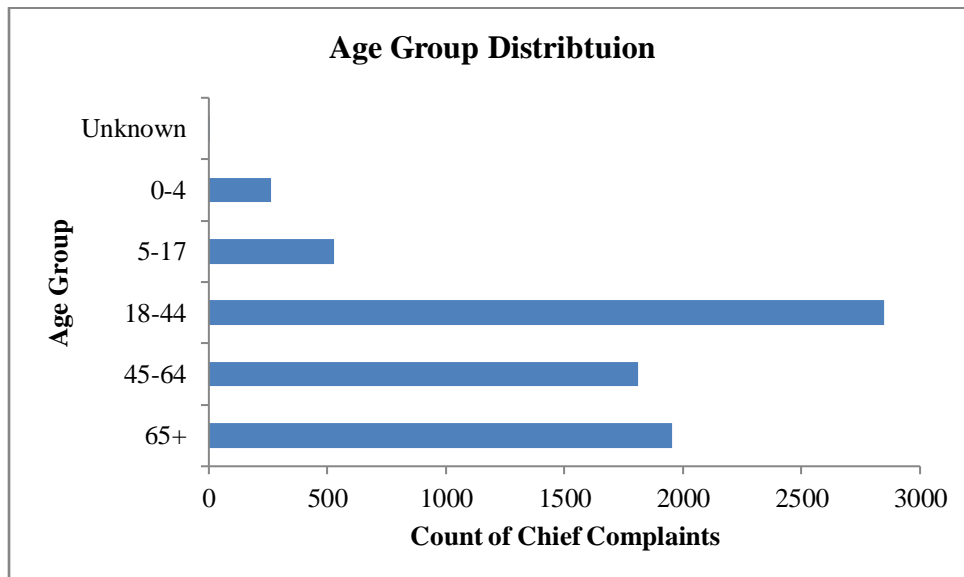
Geographical Distribution of Emergency Department Chief Complaints Regarding Heat-related Illnesses for May 21, 2019 to September 16, 2019

**Geographical distribution of emergency department chief complaints is based on patients' jurisdictions of residence. The "Other Region" category includes patient records without a ZIP code and patients who reside outside of Maryland.*



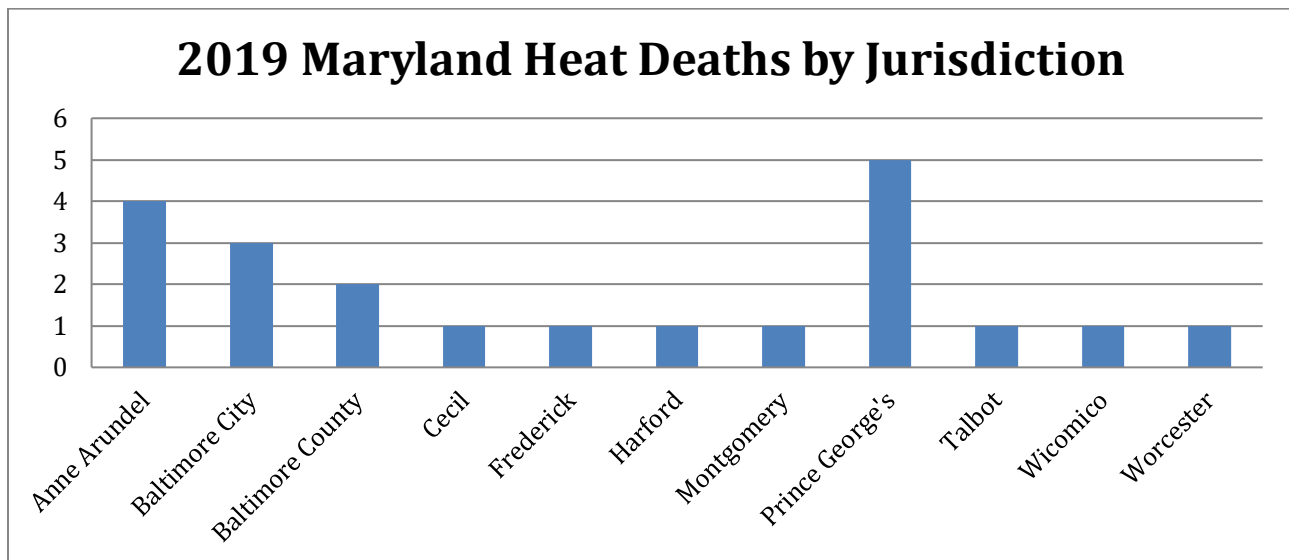
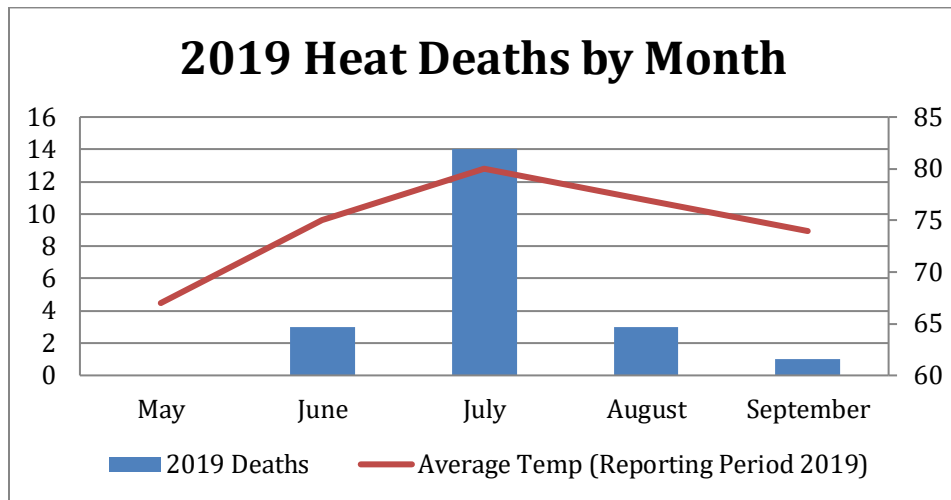
Report continued on next page...

Age Group Distribution of Emergency Department Chief Complaints Regarding Heat-related Illnesses for May 21, 2019 to September 16, 2019



Report continued on next page...

There was a total of twenty-one heat-related deaths in Maryland during the 2019 heat monitoring period. Seven of the reported deaths occurred during the excessive heat event from 7.17-7.22.19. It is not determined if two of the reported deaths were suspected or presumed homeless individuals. One death was reported after the final report was distributed but occurred within the 2019 heat monitoring period.

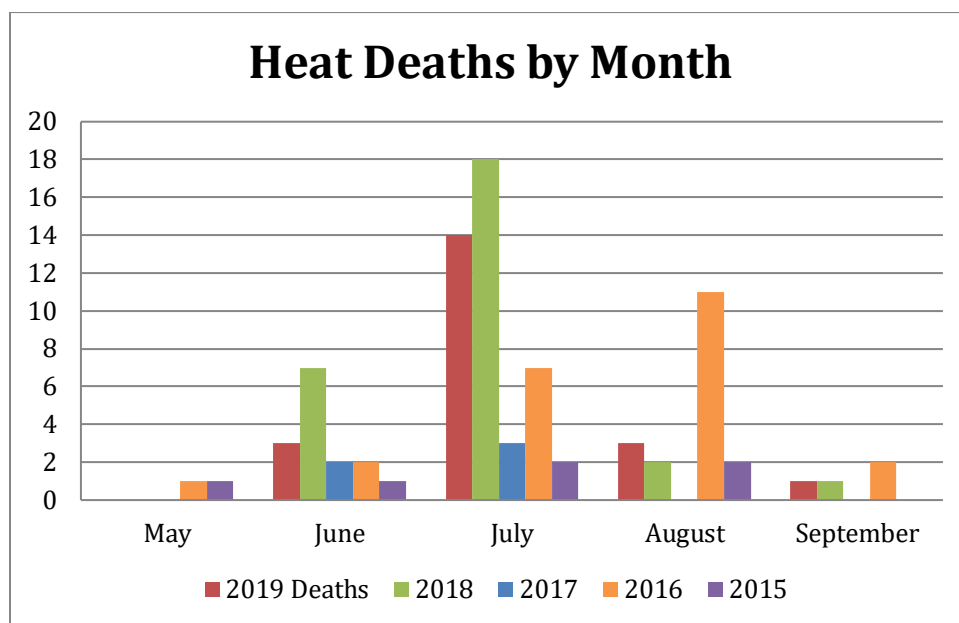


**Note: Heat-related death numbers, listed on this page and these charts, may differ in future reports as the OCME potentially may unpend death reports from this reporting period after the release of this Summary Report*

Report continued on next page...

Trends in Heat-related deaths (2015-2019)

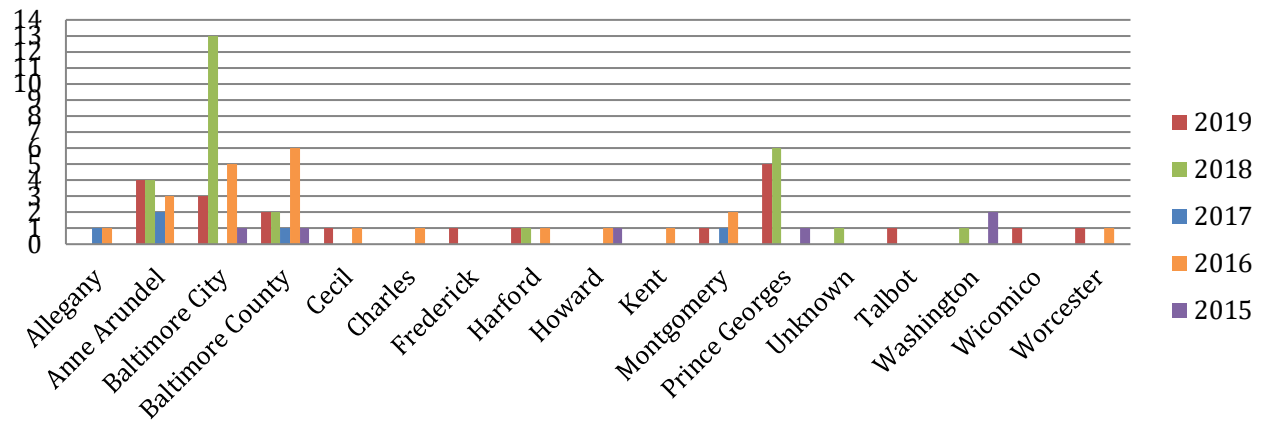
There were 6 heat-related deaths in Maryland during the 2015 heat monitoring period, 17 heat-related deaths during the 2016 heat monitoring period, 5 heat-related deaths during the 2017 heat monitoring period, and 28 heat-related deaths during the 2018 heat monitoring period. There was a total of 21 heat-related deaths in Maryland during the 2019 heat monitoring period.



**Note: Heat-related death numbers, listed on this page and chart, may differ in future reports as the OCME potentially may unpend death reports from this reporting period after the release of this Summary Report.*

Report continued on next page...

2015-2019 Maryland Heat Deaths by Jurisdiction



**Note: Heat-related death numbers, listed on this chart, may differ in future reports as the OCME potentially may unpend death reports from this reporting period after the release of this Summary Report.*

Report continued on next page...

Heat Advisory Criteria: The National Weather Service will issue a Heat Advisory when the heat index value is expected to reach 105 to 109 degrees Fahrenheit within the next 12 to 24 hours. A Heat Advisory may be issued for lower criteria if it is early in the season or during a multiday heat wave. NWS will issue an Excessive Heat Warning when the heat index value is expected to reach or exceed 110 degrees Fahrenheit within the next 12 to 24 hours. An Excessive Heat Warning may be issued for lower criteria if it is early in the season or during a multiday heat wave.

Emergency Department Data: The results from the query used in ESSENCE, an electronic biosurveillance system, to track heat-related illnesses may be an overestimation of the actual burden of illness related to the hot weather. This overestimation is due to the nature of the query, which includes the term dehydration, a condition that may be caused by factors other than heat. *As of September 2018, visit data from 22 urgent care centers are now included in ESSENCE emergency department visit data.*

Emergency Medical Services (EMS) Data: These data are based on EMS pre-hospital care reports where the EMS provider has selected “Heat Exhaustion/Heat Stroke” and/or “Hyperthermia” as a primary or secondary impression a patient’s illness. This impression is solely based on the signs and symptoms seen by the provider, not on any diagnostic tests. Since these numbers do not include all primary or secondary impressions that may be seen with heat exposure the actual numbers may be low. These data are reported for trending purposes only.

Suspected Homeless Death Data: Office of the Chief Medical Examiner (OCME) Field Investigators use the U.S. Department of Health and Human Services (HHS) homeless definition to determine suspected homeless deaths. Homeless deaths are listed as suspected due to the limited information available to the Field Investigators at the time of investigation, which may result in some misclassifications.

For more information about extreme cold and emergency preparedness, follow the Office of Preparedness and Response on Twitter and Facebook.

For media inquiries, please contact the Office of Communications: 410-767-6490

Prepared by:

Office of Preparedness and Response
Maryland Department of Health
300 W. Preston Street, Suite 202
Baltimore, MD 21201

<http://preparedness.health.maryland.gov>

Kristin A. Dietz, MS
Chief Local Health & Health Planning
Office: 410-767-06391
Email: Kristin.Dietz@maryland.gov

Jennifer Stanley, MPH
Epidemiologist, Biosurveillance Program
Office: 410-767-2074
Email: Jennifer.Stanley@maryland.gov

Jessica Acharya, MPH
Career Epidemiology Field Officer
Office: 410-767- 6745
Email: Jessica.Acharya@maryland.gov

Sara Barra, MS
Emergency Operations Manager
Office: 410-767-6434
Email: Sara.Barra@maryland.gov

Peter Fotang, MD, MPH
Epidemiologist, Biosurveillance Program
Office: 410-767- 8438
Email: Peter.Fotang@maryland.gov

