



STATE OF MARYLAND

# DHMH

**Maryland Department of Health and Mental Hygiene**  
 300 W. Preston Street, Suite 202, Baltimore, Maryland  
 21201

Martin O'Malley, Governor – Anthony G. Brown, Lt. Governor – Joshua M. Sharfstein, M.D., Secretary

**Office of Preparedness & Response**

Sherry Adams, R.N., C.P.M., Director

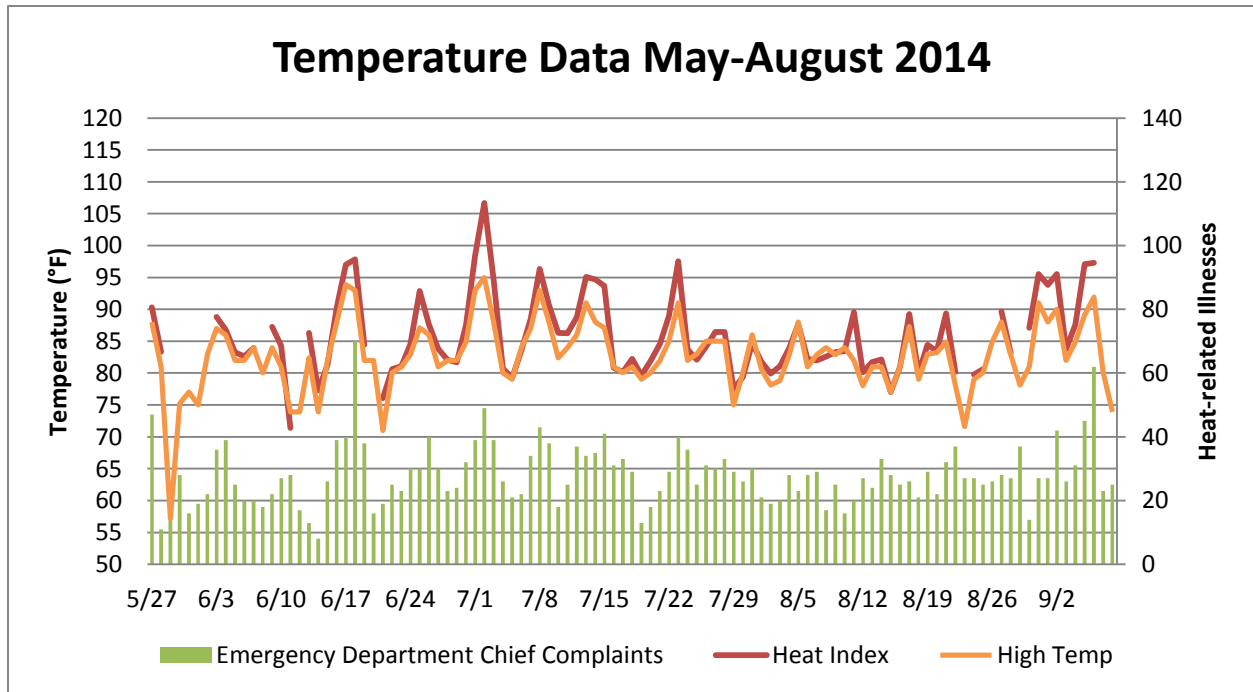
Isaac P. Ajit, M.D., M.P.H., Deputy Director

## 2014 Heat-related Illness Surveillance Report

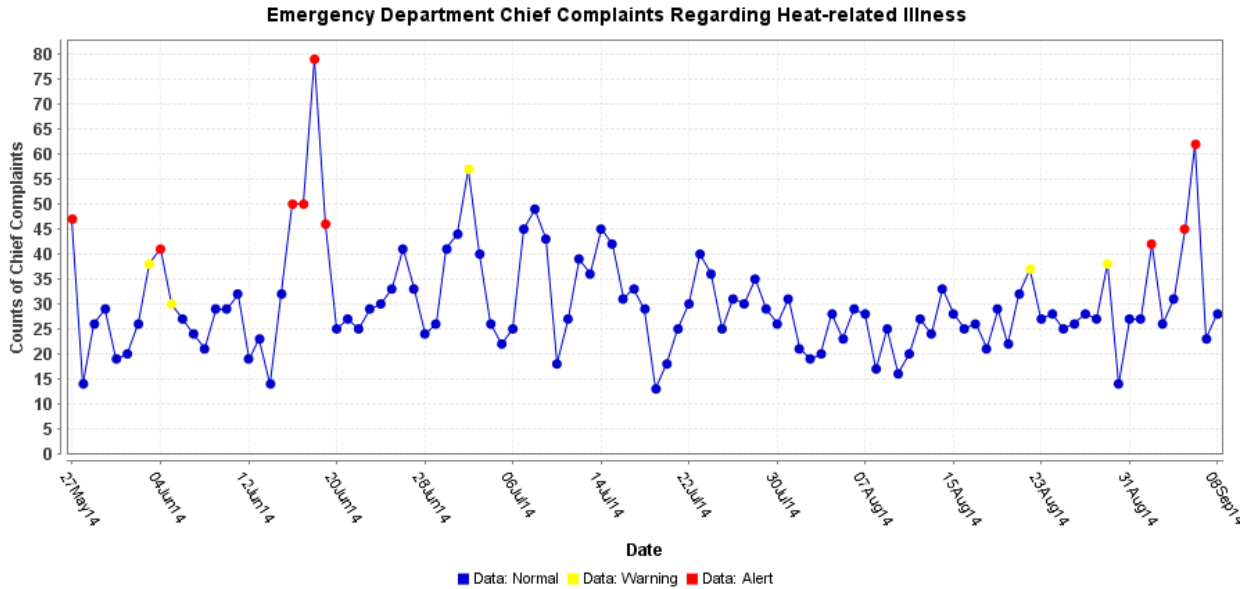
October 2, 2014

Reporting for 05/27/14 through 09/08/14

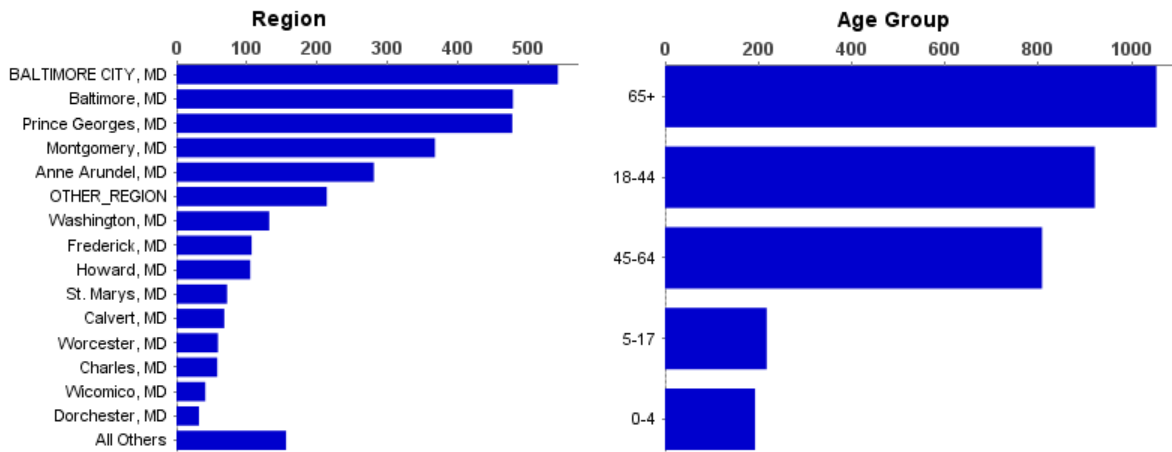
**Total Heat Advisory Days: 1 (July 2)**



**Note:** Heat indices can only be calculated with a temperature above 80°F and humidity over 43%.



## Geographical and Age Group Distribution of Emergency Department Chief Complaints Regarding Heat-related Illness for May 27 – September 8, 2014

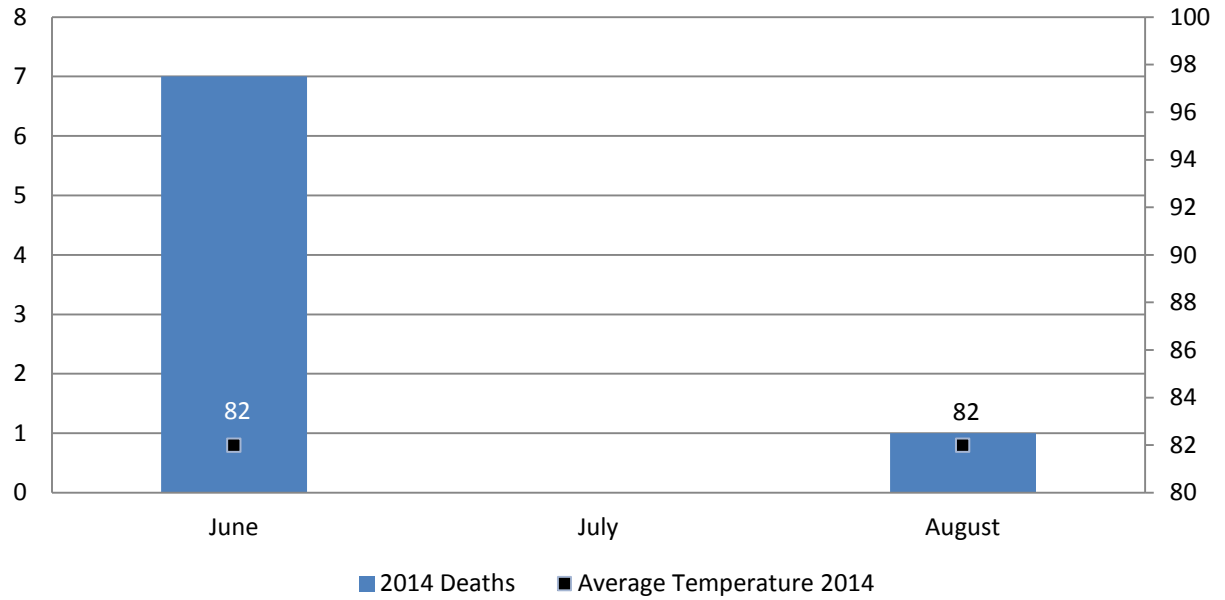


\*Other\_Region refers to individuals who reside outside of Maryland. All Others refers to the jurisdictions not included in the graph.

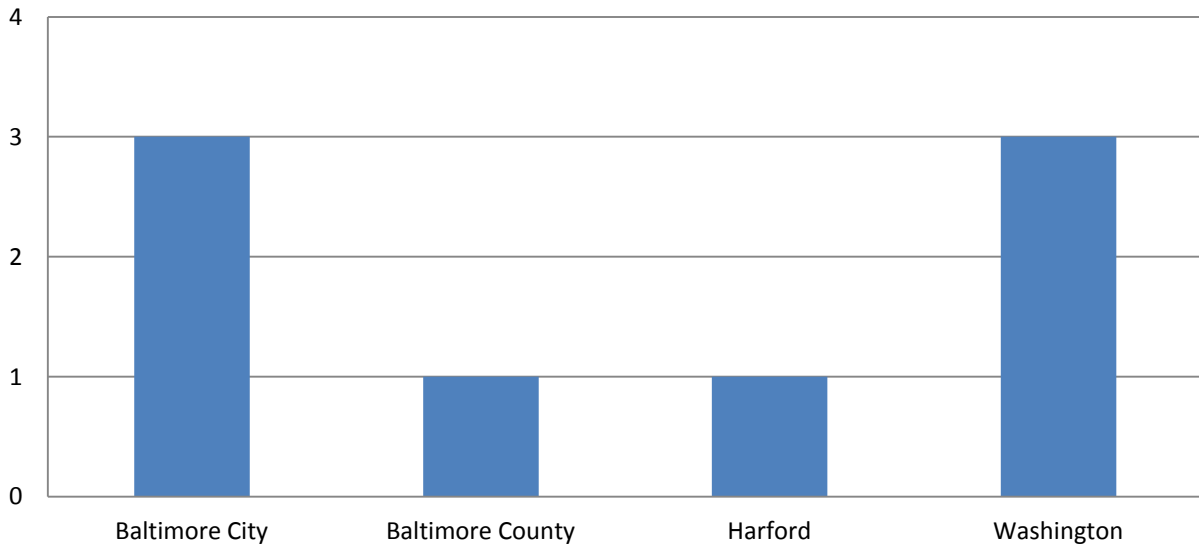
**There were a total of 8\* heat-related deaths in Maryland during the 2014 heat monitoring period.**

\*Three deaths were reported after the final weekly report and are included on this report. All three occurred in July, but final cause of death was not determined until after the end of the reporting period. One of those deaths was a student athlete that died of complications from heat stroke several weeks after being hospitalized.

### 2014 Heat Deaths by Month

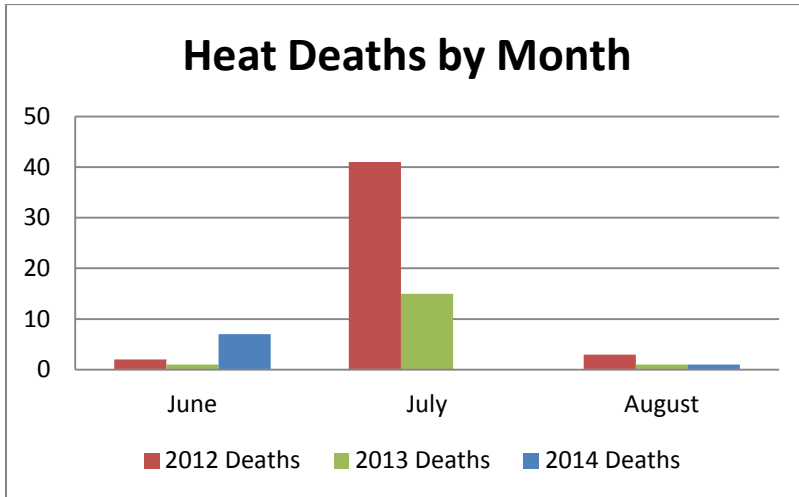


### 2014 Maryland Heat Deaths by Jurisdiction

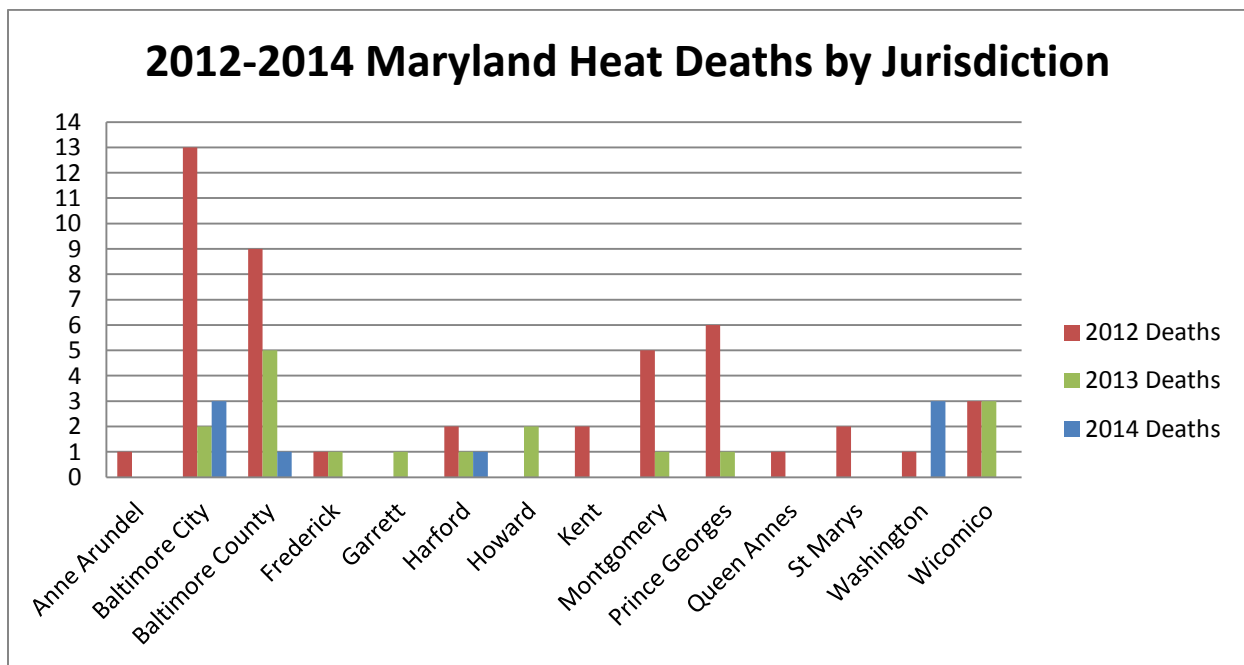


## Comparison to 2013 and 2012

**There were 46 heat-related deaths in Maryland during the 2012 heat monitoring and reporting period and 17 deaths during the 2013 heat monitoring and reporting period.**



**Note: The majority of deaths in 2012 occurred during the Derecho event in early July.**



**Heat Advisory criteria:** The National Weather Service will issue a Heat Advisory when the heat index value is expected to reach 105 to 109 degrees within the next 12 to 24 hours. A Heat Advisory may be issued for lower criteria if it is early in the season or during a multiday heat wave. NWS will issue an Excessive Heat Warning when the heat index value is expected to reach or exceed 110 degrees within the next 12 to 24 hours. An Excessive Heat Warning may be issued for lower criteria if it is early in the season or during a multiday heat wave.

**Note:** The results from the query used in ESSENCE to track heat-related illnesses may be an overestimation of the actual burden of illness related to the hot weather. This overestimation is due to the nature of the query, which includes the term dehydration, a condition that may be caused by factors other than heat.

For media inquiries, please contact the Office of Communications: 410-767-6490.

**Prepared by:** Elizabeth Humes, MPH  
Biosurveillance Epidemiologist  
Office of Preparedness and Response  
Maryland Department of Health & Mental Hygiene  
300 W. Preston Street, Suite 202  
Baltimore, MD 21201  
Office: 410-767-5668  
Fax: 410-333-5000  
Email: [elizabeth.humes@maryland.gov](mailto:elizabeth.humes@maryland.gov)

Joseph H. Anelli, MS  
Special Projects Coordinator  
Office of Preparedness and Response  
Maryland Department of Health and Mental Hygiene  
300 W. Preston Street, Suite 202  
Baltimore, MD 21201  
Office: 410.767.6201  
Email: [joseph.annelli@maryland.gov](mailto:joseph.annelli@maryland.gov)