



# **Novel Coronavirus (2019-nCoV) Outbreak**

**Infectious Disease Epidemiology and Outbreak Response Bureau**

February 4, 2020

**The information in this presentation is current as of February 4, 2020, unless otherwise noted, and subject to change.**

---

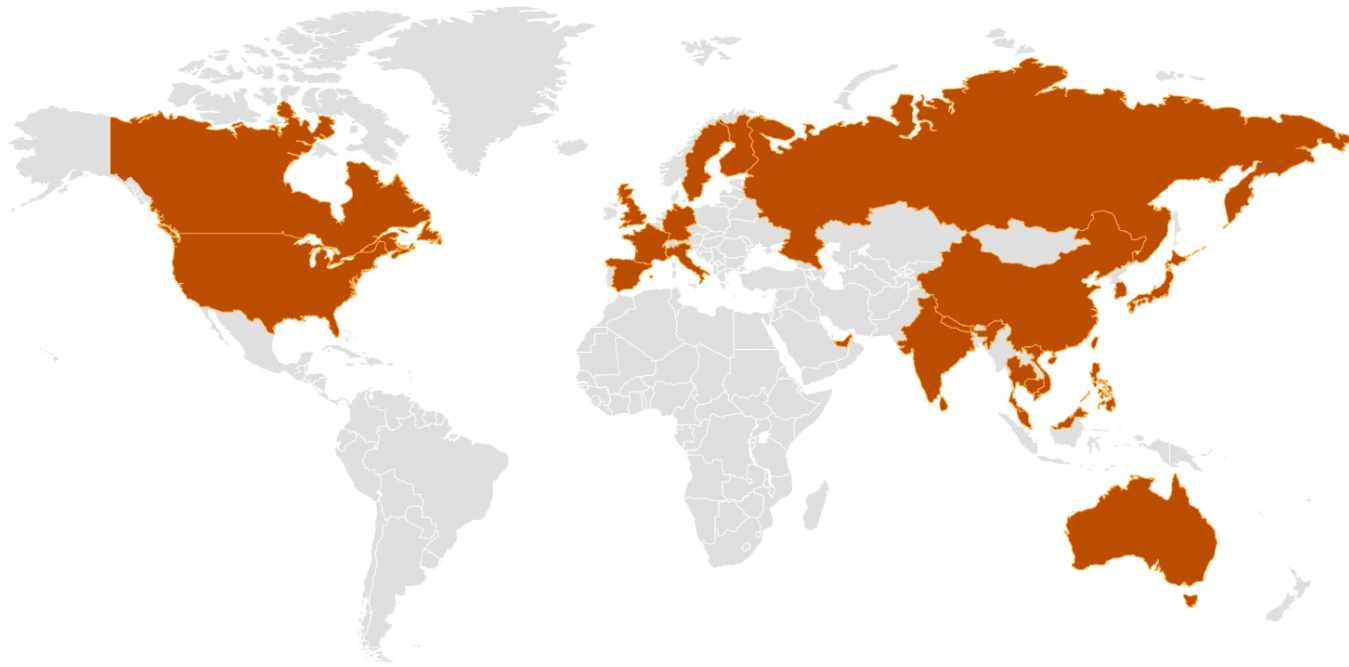
# Interim events

---

- Growing number of cases in China and worldwide
- First 2019 Novel Coronavirus-related death outside of China
- Person-to-person transmission identified in the U.S.
- WHO declared global health emergency
- U.S. declared public health emergency
- CDC released new Patients Under Investigation (PUI) criteria
- U.S. issued travel restrictions and quarantine orders

# Novel Coronavirus Cases in 28 Countries

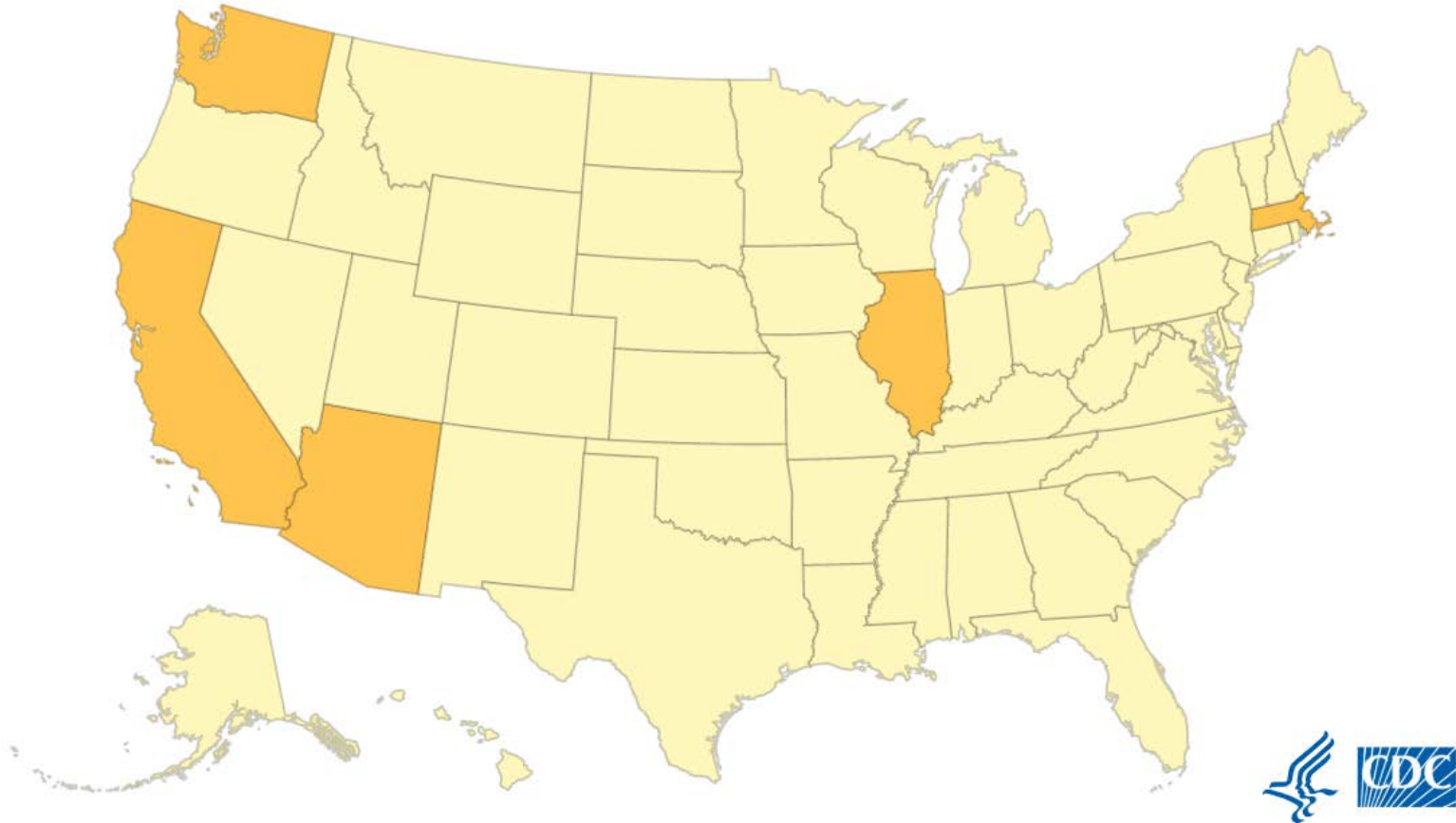
---



Source: [www.cdc.gov](http://www.cdc.gov), accessed January 31, 2020

# 11 Cases Confirmed in 5 U.S. States

---



Source: [www.cdc.gov](http://www.cdc.gov), accessed February 3, 2020

## People Under Investigation (PUI) in the United States\*†

*As of 2/3/2020*

Positive	11
Negative	167
Pending <sup>§</sup>	82
<b>Total</b>	<b>260</b>

\*Cumulative since January 21, 2020.

† Numbers closed out at 7 p.m. the night before reporting.

§Includes specimens received and awaiting testing, as well as specimens in route to CDC.

**Number of states with PUI: 36**

Source: [www.cdc.gov](http://www.cdc.gov), accessed February 3, 2020

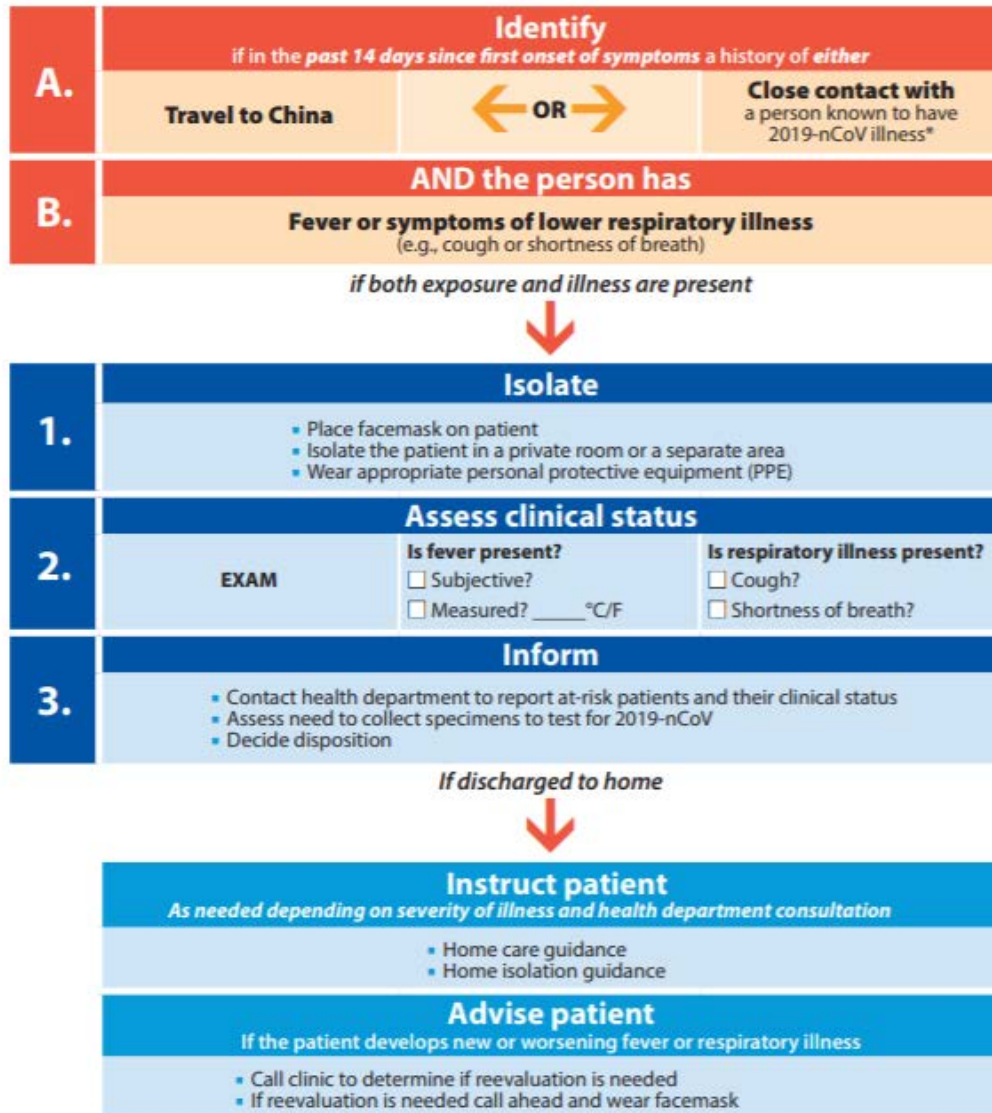
# Patients Under Investigation (PUI) Definition

Clinical Features	&	Epidemiologic Risk
Fever <sup>1</sup> or signs/symptoms of lower respiratory illness (e.g. cough or shortness of breath)	AND	Any person, including health care workers, who has had close contact <sup>2</sup> with a laboratory-confirmed <sup>3,4</sup> 2019-nCoV patient within 14 days of symptom onset
Fever <sup>1</sup> and signs/symptoms of a lower respiratory illness (e.g., cough or shortness of breath)	AND	A history of travel from <b>Hubei Province, China</b> <sup>5</sup> within 14 days of symptom onset
Fever <sup>1</sup> and signs/symptoms of a lower respiratory illness (e.g., cough or shortness of breath) requiring hospitalization <sup>4</sup>	AND	A history of travel from mainland <b>China</b> <sup>5</sup> within 14 days of symptom onset

The criteria are intended to serve as guidance for evaluation. Patients should be evaluated and discussed with public health departments on a case-by-case basis if their clinical presentation or exposure history is equivocal (e.g., uncertain travel or exposure).

## Flowchart to Identify and Assess 2019 Novel Coronavirus

For the evaluation of patients who may be ill with or who may have been exposed to 2019 Novel Coronavirus (2019-nCoV)



<https://www.cdc.gov/coronavirus/2019-ncov/hcp/identify-assess-flowchart.html>

\* Documentation of laboratory-confirmation of 2019-nCoV may not be possible for travelers or persons caring for patients in other countries. For more clarification on the definition for close contact see CDC's Interim Guidance for Healthcare Professionals: [www.cdc.gov/coronavirus/2019-ncov/hcp/clinical-criteria.html](https://www.cdc.gov/coronavirus/2019-ncov/hcp/clinical-criteria.html)



# Maryland: 2019-nCoV Cases and PUI

---

- Number of patients approved for 2019-nCoV testing: 2
- Number of 2019-nCoV tests pending at CDC: 1
- Number of negative 2019-nCoV tests: 1
- Number of laboratory-confirmed 2019-nCoV cases: 0
  
- Testing and case counts posted at <http://health.maryland.gov/coronavirus>

*Data current as of February 4, 2020*

# Testing for 2019-nCoV

---

- Specimens:
  - TWO nasopharyngeal (NP) swabs
  - One oropharyngeal (OP) swab
  - Lower respiratory specimen (e.g. sputum), if available
  - Serum (recommended, but not required)
- Testing for 2019-nCoV is still being performed at CDC.

# Testing for 2019-nCoV

---

## 2019 Novel Coronavirus Guidance

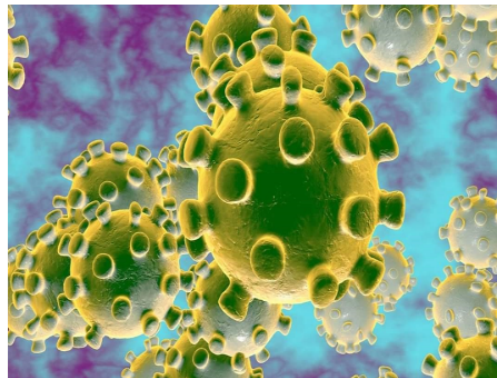
Maryland Department of Health (MDH) Laboratory

### General Background

2019 Novel Coronavirus (2019-nCoV) is a virus (more specifically, a coronavirus) identified as the cause of an outbreak of respiratory illness first detected in Wuhan, China. For more information go to the CDC website at: <https://www.cdc.gov/coronavirus/2019-ncov/index.html>

### What steps to take if you suspect a 2019 Novel Coronavirus Infection

A suspect case is identified as patients with a fever and lower respiratory illness who traveled to Wuhan, China within 14 days of symptom onset or contact with a confirmed case of 2019 Novel Coronavirus (2019-nCoV). To request 2019 Novel Coronavirus testing for a suspect case, health care providers must contact the MDH Infectious Disease Bureau at 410-767-6700 during business hours and after hours call the MDH Emergency Call Center at 410-795-7365 to arrange the initial disease consultation.



<https://health.maryland.gov/laboratories/Pages/Novel-Coronavirus.aspx>

**2019 Novel Coronavirus testing can only be conducted with prior authorization from MDH physician-epidemiologists and is restricted to patients who meet the current CDC Criteria to Guide Evaluation of Patients Under Investigation (PUI) for 2019-nCoV case definition (CDC link; <https://www.cdc.gov/coronavirus/2019-nCoV/clinical-criteria.html>)**

# Interim US Guidance for Risk Assessment and Public Health Management of Persons with Potential 2019 Novel Coronavirus (2019-nCoV) Exposure in Travel-associated or Community Settings

This interim guidance is effective as of February 3, 2020, and does not apply retrospectively to people who have been in China during the previous 14 days and are already in the United States, or those being managed as part of a contact investigation.

CDC will provide separate guidance for healthcare settings.

Source: [www.cdc.gov](http://www.cdc.gov), accessed February 3, 2020

# Overview of Interim CDC Guidance

---

- Exposure risk categories: High, Medium, Low, No Risk
- CDC recommendations based on risk category and symptoms
- Recommendations include:
  - Movement restrictions
  - Medical evaluation
  - Monitoring recommendations
  - Travel restrictions

# Key Points of Interim CDC Guidance

---

- Travel from Hubei Province
  - High risk
  - Travelers should be quarantined with “daily active monitoring”
- Travel from other parts of mainland China
  - Medium risk
  - Travelers should, to the extent possible, remain at home with “self-monitoring with public health supervision”

# Resources

---

- MDH Novel Coronavirus: <http://health.maryland.gov/coronavirus>
- MDH Laboratories Administration Novel Coronavirus: <https://health.maryland.gov/laboratories/Pages/Novel-Coronavirus.aspx>
- CDC Interim US Guidance for Risk Assessment and Public Health Management of Persons with Potential 2019 Novel Coronavirus Exposure in Travel-associated or Community Settings <https://www.cdc.gov/coronavirus/2019-ncov/php/risk-assessment.html>
- CDC Guidance for Healthcare Professionals <https://www.cdc.gov/coronavirus/2019-nCoV/clinical-criteria.html>
- CDC Guidance for Infection Control <https://www.cdc.gov/coronavirus/2019-nCoV/infection-control.html>