



# **Coronavirus Disease 2019 (COVID-19) Update**

**Infectious Disease Epidemiology and Outbreak Response Bureau**

February 18, 2020

**The information in this presentation is current as of February 18, 2020, unless otherwise noted, and subject to change.**

---

# Interim events

---

- New names announced
  - Disease name: COVID-19
  - Virus name: SARS-CoV-2
- Rising case and death counts in China and elsewhere
- Reporting changes in China
- Cruise ship situations

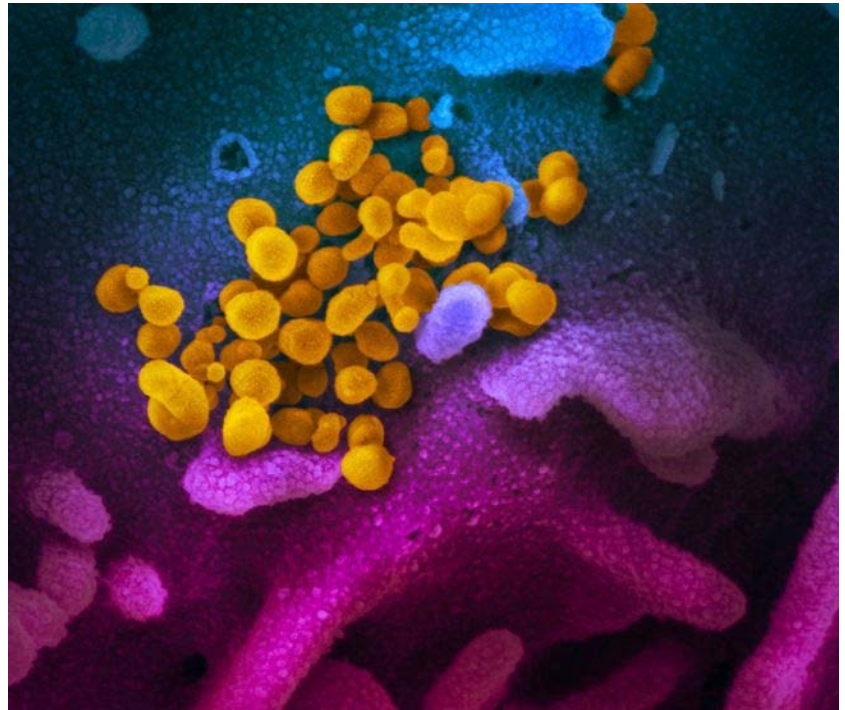
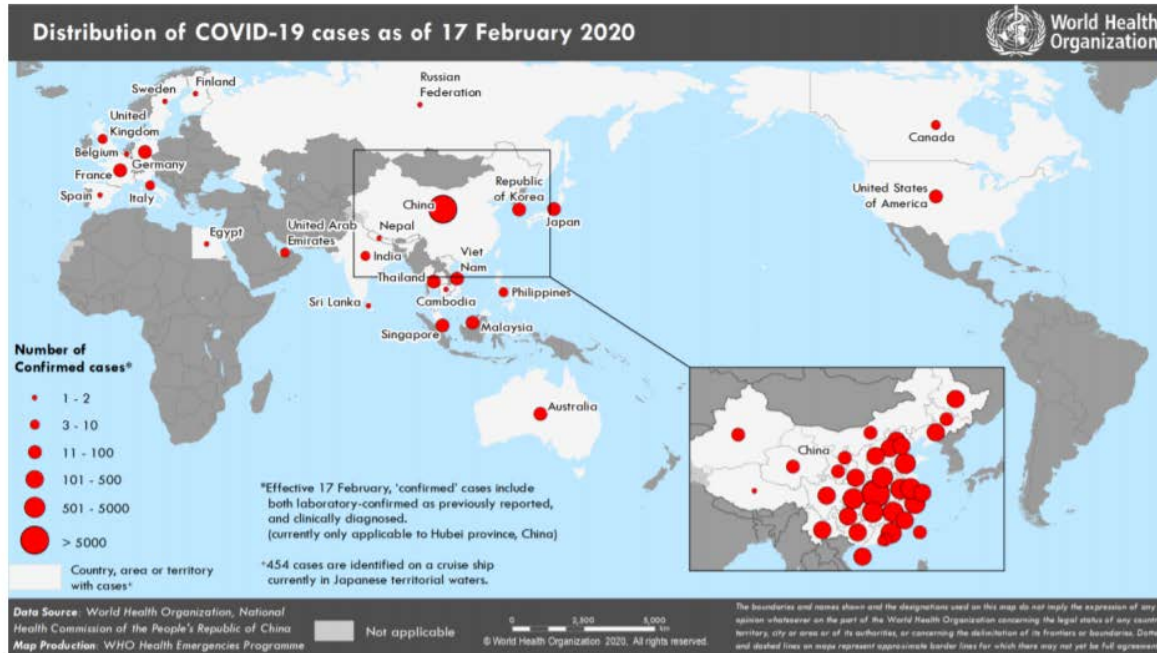


Image Source: NIAID-RML

# Coronavirus disease 2019 (COVID-19) Situation Report – 28

Data as reported by 17 February 2020\*



## SITUATION IN NUMBERS total and new cases in last 24 hours

### Globally

71 429 confirmed (2162 new)

### China

70 635 confirmed (2051 new)  
1772 deaths (106 new)<sup>†</sup>

### Outside of China

794 confirmed (111 new)  
25 countries  
3 deaths

## WHO RISK ASSESSMENT

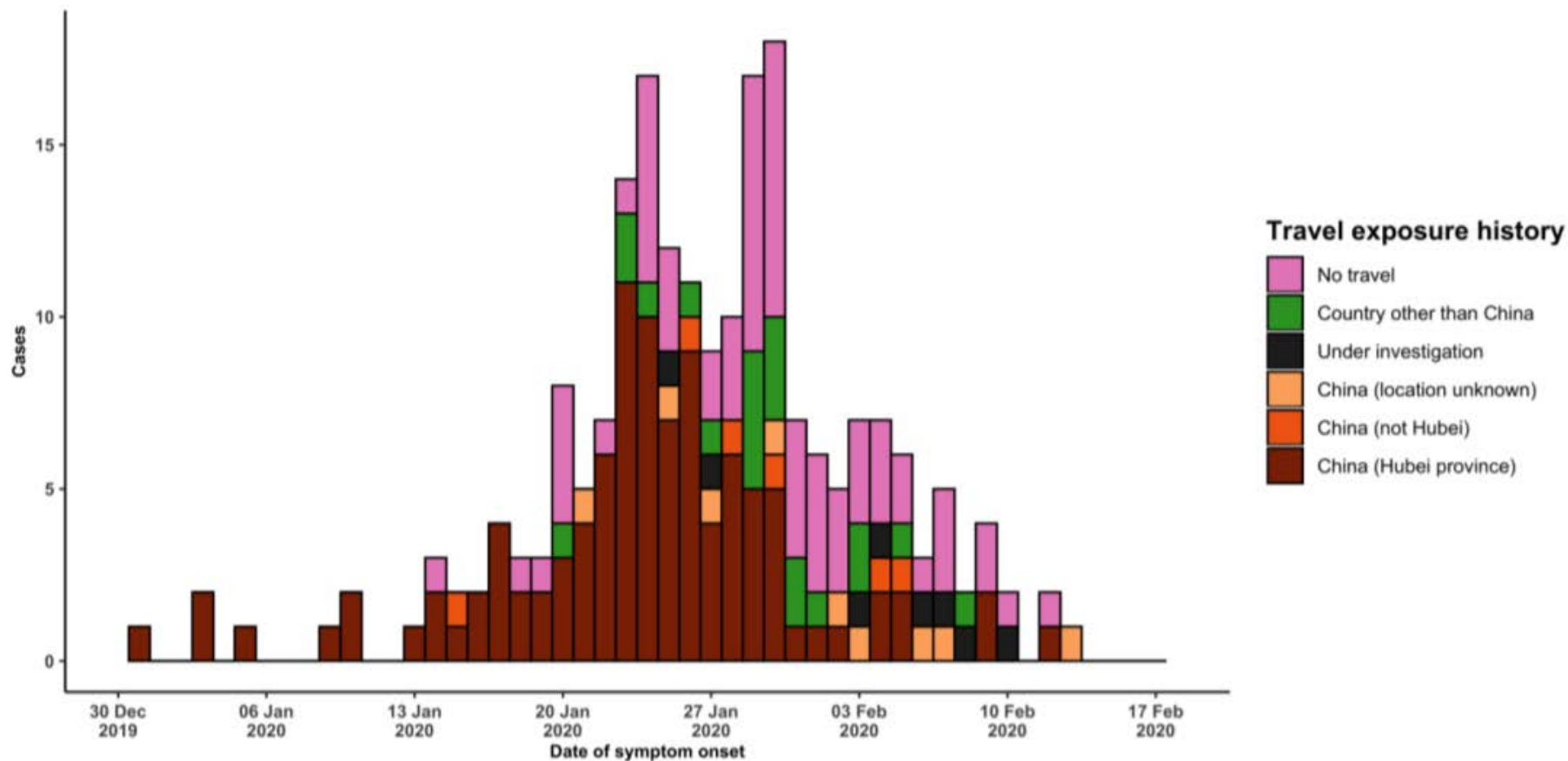
China	Very High
Regional Level	High
Global Level	High

\*The situation report includes information provided by national authorities as of 10 AM Central European Time

<sup>†</sup>As reported by China

Source: [https://www.who.int/docs/default-source/coronaviruse/situation-reports/20200217-sitrep-28-covid-19.pdf?sfvrsn=a19cf2ad\\_2](https://www.who.int/docs/default-source/coronaviruse/situation-reports/20200217-sitrep-28-covid-19.pdf?sfvrsn=a19cf2ad_2), accessed February 17, 2020

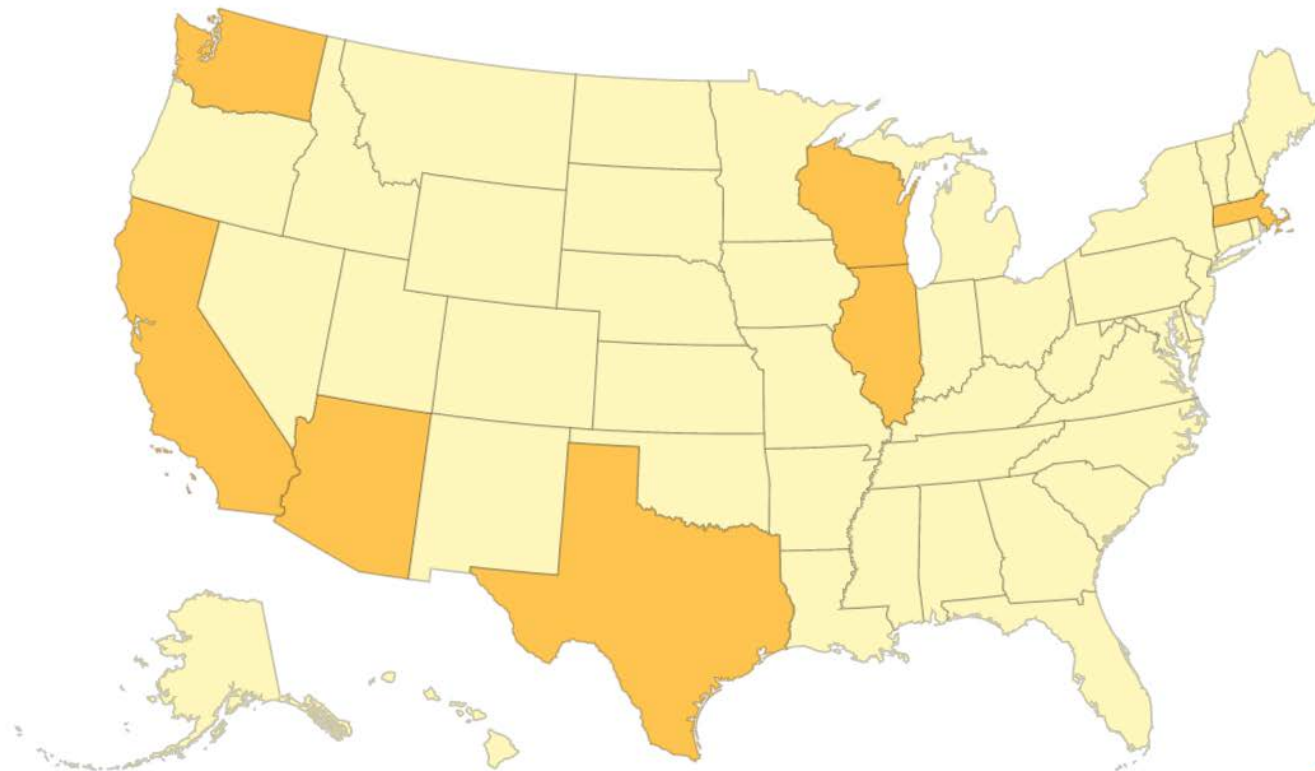
Figure 2. Epidemic curve of COVID-19 cases (n=210) identified outside of China, by date of onset of symptoms and travel history, 17 February 2020



Source: [https://www.who.int/docs/default-source/coronaviruse/situation-reports/20200217-sitrep-28-covid-19.pdf?sfvrsn=a19cf2ad\\_2](https://www.who.int/docs/default-source/coronaviruse/situation-reports/20200217-sitrep-28-covid-19.pdf?sfvrsn=a19cf2ad_2), accessed February 17, 2020

# 15 Cases Confirmed in 7 U.S. States

---



Source: [www.cdc.gov](http://www.cdc.gov), accessed February 17, 2020



## Persons Under Investigation (PUI) in the United States\*†‡

Positive	15
Negative	392
Pending <sup>§</sup>	60
<b>Total</b>	<b>467</b>

\*Cumulative since January 21, 2020.

† Numbers closed out at 4 p.m. the day before reporting.

§ Includes specimens received and awaiting testing, as well as specimens en route to CDC.

‡ Does not include PUIs in the US that were evacuated from the Diamond Princess cruise ship, including presumptive-positive cases.

**Number of states and territories with PUI: 42**

Source: [www.cdc.gov](http://www.cdc.gov), accessed February 17, 2020

# Maryland: COVID-19 Cases and PUI

---

- Number of patients approved for testing: 2
- Number of tests pending at CDC: 0
- Number of negative tests: 2
- Number of laboratory-confirmed cases: 0

Testing and case counts posted at <http://health.maryland.gov/coronavirus>

*Data current as of February 18, 2020*



# Testing for COVID-19

---

- Nationally, performance issues identified related to one of the test reagents in testing kits sent to states
- Testing is still being performed at CDC
- Continue to call MDH at **410-767-6700** for all testing inquiries

# MDH School Guidance



Larry Hogan, Governor · Boyd K. Rutherford, Lt. Governor · Robert R. Neill, Secretary

## Frequently Asked Questions: Guidance for Schools About the Novel Coronavirus (COVID-19)

### What is the concern about COVID-19?

There is an ongoing, international outbreak of a new virus, called COVID-19, formerly known as 2019-nCoV. While many of the early cases in this outbreak primarily involved people living in Wuhan City, China, Chinese health officials have now reported thousands of cases throughout China. This virus causes a respiratory illness which includes fever, cough, and shortness of breath, and in some cases, can be fatal. It is thought that infected people will develop symptoms 2 to 14 days after an exposure.

### What is being done to address the COVID-19?

On arrival to the United States, travelers from China may be asked questions to determine if they need to undergo health screening. During the health screening, authorities check temperatures, symptoms, and ask about specific exposures in China. If travelers have concerning symptoms, they will be sent for medical evaluation. The Centers for Disease Control and Prevention (CDC) staff will provide health information cards to travelers that tell travelers what symptoms to look out for, and what to do if they develop symptoms within 14 days after leaving China. Some travelers might be asked to stay home from work or school for up to 14 days.

### What are the symptoms that COVID-19 can cause?

Patients with COVID-19 have had mild to severe respiratory illness with fever, cough, and difficulty breathing.

### How does the virus spread?

This virus probably originally emerged from an animal source but is now spreading from person-to-person. At this time, it is unclear how this virus is spreading between people; however other coronaviruses spread person-to-person via respiratory droplets created when an infected person coughs or sneezes (similar to how influenza and many other respiratory pathogens spread) and droplets infect another person.

### What if a student traveled to China and has no symptoms? Can they come to school?

It depends on when the student was last in China. Students who arrived from China prior to February 4, 2020 and who are well (without symptoms) are not restricted from school or other activities. Because of the wider spread of the virus in China, potential exposures in China are now greater. Therefore, children who arrived from China on February 4 or later should stay home from school until

Available online at:

<http://health.maryland.gov/coronavirus>



# CDC Guidance: Businesses/Employers

---

- Interim Guidance for Businesses and Employers to Plan and Respond to Coronavirus Disease 2019 (COVID-19), February 2020
- Available at:  
<https://www.cdc.gov/coronavirus/2019-ncov/specific-groups/guidance-business-response.html>

# CDC Guidance: Businesses/Employers

---

- Strategies to Use Now
  - Actively encourage sick employees to stay home
    - Ensure that sick leave policies are flexible
  - Emphasize staying home when sick, respiratory etiquette and hand hygiene by all employees
    - Ensure that soap and water, alcohol-based hand sanitizer and tissues are available
  - Perform routine environmental cleaning
    - Provide disposable wipes so that high touch surfaces can be wiped

# CDC Guidance: Businesses/Employers

---

- Planning for a Possible COVID-19 Outbreak in the US
  - Prepare for possible increased employee absences
  - Review essential business functions/COOP Plan
  - Cross-train personnel
  - Ensure that employees are informed

# Monitoring Update

- Current status
- Next steps



**2019 nCoV CORONAVIRUS**

**HEALTH ALERT: *Travelers from China***  
There is an outbreak of respiratory illness in China.

**Travelers are required to be monitored for up to 14 days after leaving China.**

Travelers should stay home and monitor their health within this 14-day period.  
A health official will contact you to give additional instructions.

**Take your temperature with a thermometer 2 times a day and watch your health.**

If you develop a fever (100.4°F/38°C or higher), cough, or have difficulty breathing:

- Call your health department for advice before seeking care.
- If you can't reach your health department, call ahead before going to a doctor's office or emergency room.
- Tell them your symptoms and that you were in China.

For more information: [www.cdc.gov/nCoV](http://www.cdc.gov/nCoV)

U.S. 314423.D 02/03/2020

# Resources

---

- MDH Novel Coronavirus  
<http://health.maryland.gov/coronavirus>
- MDH Laboratories Administration Novel Coronavirus  
<https://health.maryland.gov/laboratories/Pages/Novel-Coronavirus.aspx>
- Interim Guidance for Businesses and Employers to Plan and Respond to Coronavirus Disease 2019 (COVID-19), February 2020  
<https://www.cdc.gov/coronavirus/2019-ncov/specific-groups/guidance-business-response.html>