

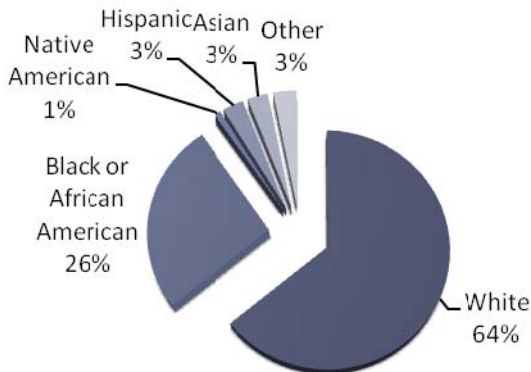
# Unmet Needs Among **CENTRAL** Maryland CYSHCN and their Families

## 2010 MARYLAND PARENT SURVEY

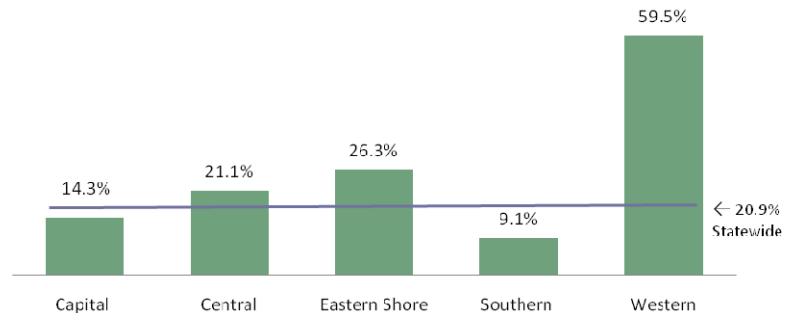
### Statewide Characteristics of Responding Families and their CYSHCN<sup>i</sup>

772 families with at least one CYSHCN (representing 1040 children) responded to the survey statewide.

Race/ethnicity of responding families' children (n= 1,040 children)



Percent of Families with at Least One CYSHCN at or Below 185 FPL

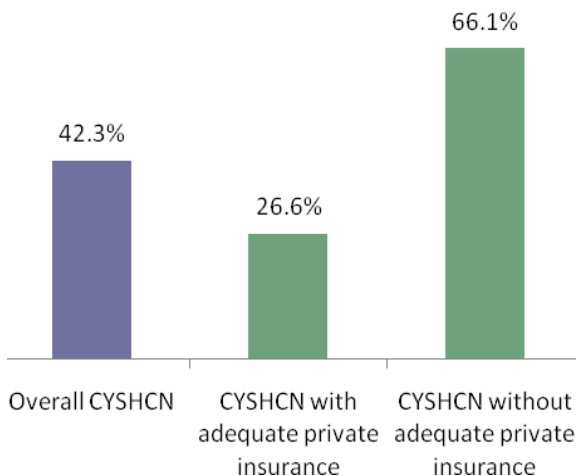


### Impact on the Family

	% of Central MD CYSHCN	% of CYSHCN Statewide
<i>CYSHCN whose families pay \$1,000 or more out of pocket in medical expenses per year</i>	<b>42.3</b>	<b>42.5</b>
<i>CYSHCN whose families report that their child's insurance does not pay for all health services needed</i>	<b>49.6</b>	<b>54.5</b>
<i>CYSHCN who were uninsured at some point in the last 12 months</i>	<b>10.5</b>	<b>12.7</b>
<i>CYSHCN whose conditions cause family members to cut back or stop working</i>	<b>36.4</b>	<b>37.7</b>

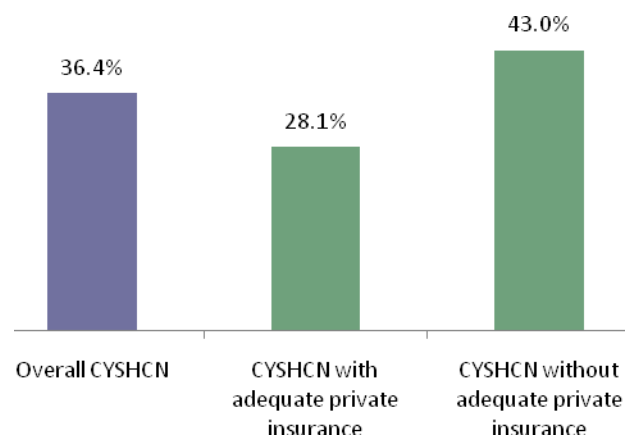
#### Impact on the Family:

CYSHCN whose families pay \$1,000 or more out of pocket in medical expenses per year



#### Impact on the Family:

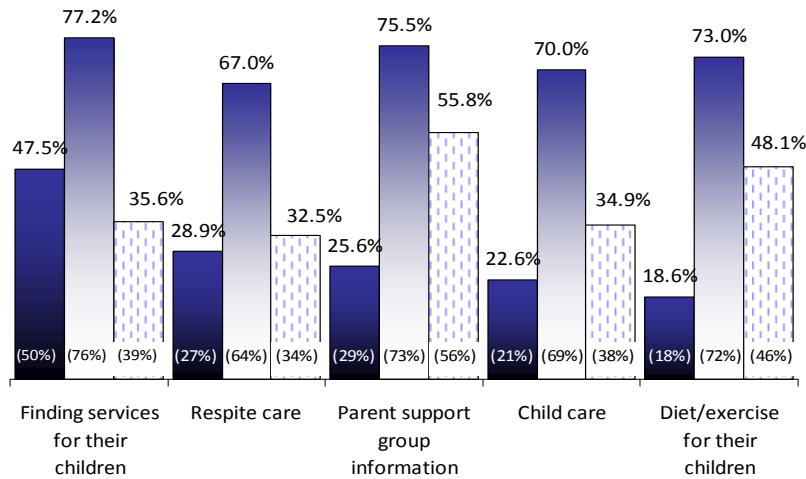
CYSHCN whose conditions cause family members to cut back or stop working



# Unmet Needs Among **CENTRAL** Maryland CYSHCN and their Families 2010 MARYLAND PARENT SURVEY

## Need for Family Support

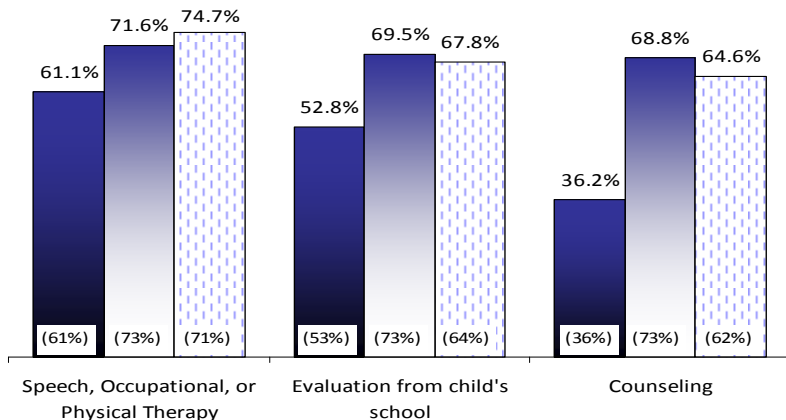
Families who reported needing support services for CYSHCN in Central Maryland (% statewide in parenthesis)



■ % families of CYSHCN who needed assistance with issue  
 ■ % families of CYSHCN who needed and sought assistance with issue  
 ■ % families of CYSHCN who sought assistance and were satisfied with services received

## Need for Education and Related Services

Families who reported needing specific services for CYSHCN in Central Maryland (% statewide in parenthesis)



■ % families of CYSHCN who needed assistance with issue  
 ■ % families of CYSHCN who needed and sought assistance with issue  
 ■ % families of CYSHCN who sought assistance and were satisfied with services received

## Need for Health Care

Percent of Families of CYSHCN reporting any unmet need or delayed medical care in Central Maryland

Type of Care	% Central Maryland	% Maryland
Any type of unmet need or delayed care	37.4	39.2
Dental	24.0	27.4
Counseling	22.4	23.6
Mental Health Care	21.7	25.3
Medical Care	16.5	21.0

Central Maryland families of CYSHCN report high rates of unmet need or delayed care for needed health care services. Over 37% indicated that their family experienced some type of unmet or delayed care. The highest rates of unmet or delayed care were for dental care (24.0%) and counseling (22.4%). Over one-fifth of families report delays or unmet needs for mental health care.

## Central Maryland

The Central Maryland region includes Anne Arundel, Baltimore, Harford, Carroll, and Howard counties and Baltimore city.

