

The Maryland State Alzheimer's Research Support (StARS) Project

Background

Aligned with Goal 5 of the Maryland ADRD Plan to enhance dementia-related data capabilities, the Maryland STARS Project aims to create a coordinated data system to address current gaps that hinder community organizations—including health departments, aging and disability services, and social service agencies—from delivering optimal care to individuals with ADRD, their families and caregivers. The solution created by this project will additionally expand ADRD service resources by enabling healthcare cost impact measurements, ultimately increasing access to sustainable reimbursement systems for these essential services. Multi-sector, statewide ADRD stakeholders will collaborate to develop connections between three HIPPA compliant, secure data systems to enhance ADRD community-based care.

In the initial year of this project (May 2025 - May 2026), stakeholders will conduct a comprehensive technology assessment and implementation process to harmonize and link ADRD-relevant service data elements across the selected systems. CRISP will be the primary tool used to query client health care outcomes and return on investment. Currently these systems are not connected, limiting patient referral and the ability to quantify health impacts and cost savings. The new bidirectional data and referral system will allow aging, disability, and social service networks to coordinate service delivery with clinical providers.

Current activities

To date the project has:

- Participated in developing questions for a Lived Experience Panel (LEP) of people living with dementia (PLWD) and caregivers. The purpose of the LEP is to gain an understanding of the service needs and gaps from the perspective of PLWD and caregivers, to inform the project work. Areas include experiences with medical professionals and community-based organizations. The national StARS center will be conducting these interviews in the next few months.
- Established the main IT systems that will be interconnected in the project.

Future Activities

- Perform a detailed assessment of content within the data systems. Aggregate data will leverage and enhance the MDH dementia dashboard, which will provide information on statewide dementia incidence and people living with dementia/caregiver service needs.
- Finalize a research question which will become part of our grant application for Year 2 (2026-2027) of the StARS project.

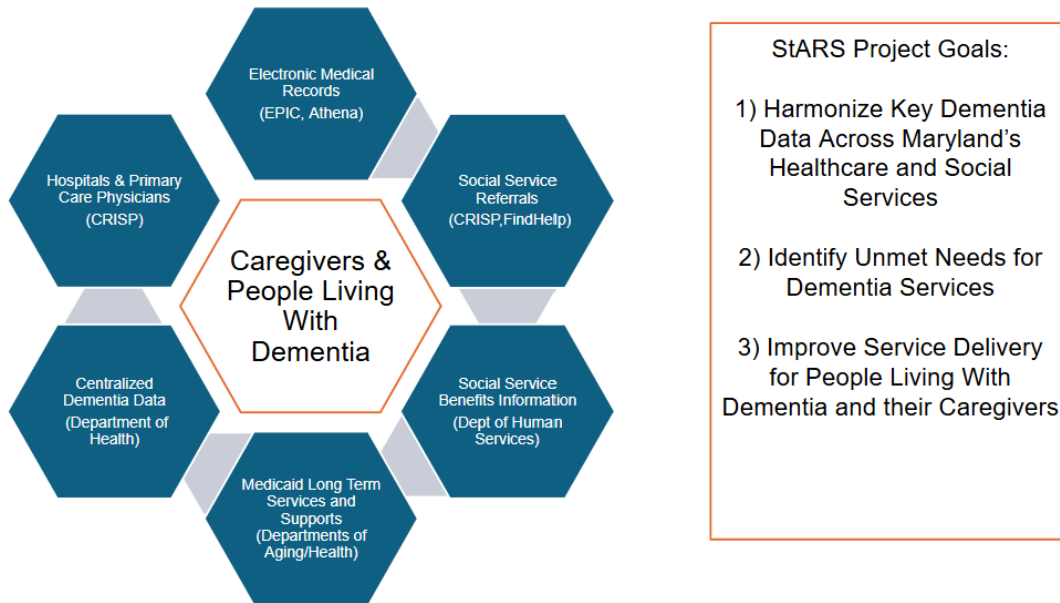
Team Members:

Lead: Leigh Ann Eagle, Maintaining Active Citizens, Inc's (Area Agency on Aging for the Lower Eastern Shore of Maryland) Living Well Center of Excellence.

Partners: Maryland Department of Health (MDH); Maryland Department of Aging; Chesapeake Regional Information System for our Patients (CRISP); Johns Hopkins Geriatric Workforce Education Project.

To Learn More About the National Effort and Resource Center: [State Alzheimer's Research Support Center](#)

State Alzheimer's Research Support Center (StARS) 2025-2026 Project* Builds an Optimal IT Infrastructure



* 2026 Project will utilize the infrastructure to addressing a research question related to improving outcomes for people living with dementia and their caregivers.