

Maryland Guide for Finding and Using Data to inform Local Health Priorities



Data Guide
2024

About the Data Guide

Introduction:

This data guide serves as a resource for Maryland Local Health Improvement Coalition (LHIC) leadership and members, both county staff and community, to obtain data and information that can be helpful in completing needs assessments, identifying specific populations with health needs, planning activities and programs, and monitoring changes in health throughout the community. In this guide, we describe several data sources that provide customized local information, as well as the most commonly used data sources Maryland county health departments and LHICs report using for their community health assessments. LHICs may find these sources of information useful when planning and implementing health strategies. This guide is not designed to identify data sets that would require advanced statistical knowledge or programming skills to generate estimates. Instead, we focused on data sources that have existing query systems or have released aggregated data at the county or local level to support decision-making. The guide should enable LHIC members, external stakeholders, and other local coalition partners to find information on health.

The guide is a selective, not comprehensive, report on data sources LHICs may consider. LHICs may consult this guide when looking for the following types of information:

- **Chronic disease**
- **Social vulnerability**
- **Health services utilization**
- **Health Insurance**

- **Demographics**
- **Disease burden**
- **General population**
- **Race/ Ethnicity**

TABLE OF CONTENTS

Introduction : About the Data Guide	3	Published Reports, Existing Data Reports, and Data Tables (National Level Data)	16
Data Sources	4		
Customizable Data Set Query Systems	4	National Center for Education Statistics	17
CRISP Public Health Data Dashboard	5	National Assessment of Educational Process	17
Maryland Behavioral Risk Factors Surveillance System	7	The program for the international Assessment of Adult Competencies	17
CDC Social Vulnerability Index (SVI)	9	University of Wisconsin Population Health Institute and Robert Wood Johnson County Health Rankings & Roadmaps	19
United States Census Bureau	11	Dignity Health Community Needs Index (CNI)	20
Published Reports, Existing Data Reports, and Data Tables (Maryland Level Data)	13	Additional Tools and Resources	21
Maryland State Health Improvement Process (MD SHIP)	14	Sources from Counties' Community Assessments	21
Health Service Cost Review Commission (HSCRC)	15		



The first section of the data guide reviews selected query systems that allow users to filter and customize data requests for certain state and federal databases. The second section of the data guide includes published reports, existing data reports, and aggregated data tables that may address general questions. This second section is organized into local Maryland level data and national level dat

Data Sources

**Customizable Dataset
Query Systems**





CRISP Public Health Dashboard

Description

CRISP (Chesapeake Regional Information System for Our Patients) receives inbound data feeds from many provider organizations across the region, including all hospitals in Maryland and most in D.C. CRISP facilitates access to clinical information for providers and staff with treatment and care coordination responsibilities. County health departments have access to a query system and some aggregated information in a specific product called the CRISP Public Health Dashboard. It is designed for individuals working on population health and public health who want a deeper understanding of the community's health. With this dashboard, users can analyze Maryland hospital utilization and filter on metrics of interest such as demographics, conditions, geography, payer type, utilization type, etc.

Accessing and Using the Data

The CRISP Public Health Dashboard requires a login. Contact the Support Team (contact information listed below) to request a login. Each local health department should have a Point of Contact (POC). POCs will have access to a credentialing application to add new CRISP users.

Data Sources

- Claims
- County/Zip Code
- Conditions
- Prevention Quality Indicators (PQIs)
- Readmissions
- Service Lines



All new users must submit a copy of the CRS end user agreement before or after they receive access to the reports. This agreement covers rules and requirements for accessing the data. Once a user receives the login information, they can log in at: The CRISP Login Page.

Training Videos

[CRISP Public Health Dashboard Introduction](#)

Helpful Links

- [CRISP Website](#)
- [User Guide](#)
- [Public Health Dashboard User Training Webinar Slides](#)

Maryland Behavioral Risk Factor Surveillance System (BRFSS)



Description

The Maryland Department of Health (MDH) collects data through a series of telephone surveys throughout the state of Maryland regarding health-related behaviors, chronic health conditions, and use of preventive care. Data is available at the state, county, and census tract level. Other U.S. states and territories use the BRFSS, which is part of a larger data collection effort nationwide coordinated by the U.S. Centers for Disease Control and Prevention (CDC).

Accessing and Using the Data

The BRFSS website allows you to query public health datasets through their IBIS interface. After selecting a dataset, you can specify filtering and cross-tabulation criteria and produce data tables, graphs and maps. Crude and Age Adjusted rates are available. Data can be queried within the Maryland BRFSS website based on specific demographic variables of interest and can also be exported and viewed in Excel.

Certain counties may experience/unstable estimates IBIS query system due to small sample size in their area. More stable estimates have been created by the MD BRFSS office to address this issue by pooling multiple years of data. This pooled data report is available [here](#). If your needs are not met by these tables, we recommend that users reach out to the MD BRFSS coordinator (contact information listed below) to request customized estimates by pooling multiple years of data.

Types of Data

- Chronic disease
- Cancer screening
- Cancer survivorship
- Cognitive health
- Diabetes care
- Family planning
- HealthBehavior and Risk Factors
- Healthcare access
- Tobacco use
- Women's health

Helpful Links

1. [MD IBIS Website](#)
2. [MD BRFSS Surveys and Reports](#)
3. [MD IBIS Website Overview Video](#)
4. [National BRFSS Data](#)
5. [Chronic Disease Burden Tables 2011-2019](#)

Support Contact Information General Support

Telephone: 443-388-6740

Email: mdh.brfss@maryland.gov

Coordinator: Brittany Wilson-MDH-

Maryland Department of Health
Center for Chronic Disease Prevention and
Control 201 W Preston St., Ste. 306
Baltimore, MD 21201
Phone: 410-767-6722

Website:

http://www.marylandbrfss.org/external_icon

Email: Brittany.Wilson2@maryland.gov

CDC Social Vulnerability Index (SVI)



Description

The Index uses 15 U.S. census variables to identify communities that need additional support by scoring the vulnerability of each census tract. SVI ranks the tracts on 15 social factors, including unemployment, minority status, and disability, and further groups them into four related themes.

Data Source

Data from census tracts within each state and the District of Columbia enable mapping and analysis of relative vulnerability in individual states. The Index ranks tracts for the entire United States against one another, for mapping and analysis of relative vulnerability in multiple states, or across the U.S. as a whole. Tract rankings are based on percentiles. Percentile ranking values range from 0 to 1, with higher values indicating greater vulnerability. Data is grouped by state, county and census tract.

Types of Data

- Socioeconomic Status
- Household Composition and Disability
- Minority Status and Language
- Housing Type and Transportation



Accessing and Using the Data

The data is publicly available and can be presented in a [database](#) or [interactive map](#).

Interpreting the SVI ranking for a county:

- A percentile ranking represents the proportion of tracts (or counties) that are equal to or lower than a tract (or county) of interest in terms of social vulnerability. For example, a CDC/ATSDR SVI ranking of 0.85 signifies that 85% of tracts (or counties) in the state or nation are less vulnerable than the tract (or county) of interest and that 15% of tracts (or counties) in the state or nation are more vulnerable.

Training Videos

1. [Intro to the U.S. Diabetes Surveillance System using SVI](#)
2. [Introduction to the CDC/ATSDR Social Vulnerability Index](#)
3. [Methods for the CDC/ATSDR Social Vulnerability Index](#)

Helpful Links

1. [CDC/ATSDR Social Vulnerability Index Main Page](#)
2. [SVI Interactive Map](#)
3. [Data and Documentation Download](#)
4. [Frequently Asked Questions \(FAQ\)](#)

**Support Contact
Information CDC/ATSDR
SVI Coordinator**

svi_coordinator@cdc.gov

***Geospatial Research, Analysis,
and Services Program (GRASP)***

placeandhealth@cdc.gov



United States Census

Description

The U.S. Census Bureau provides detailed data and counts on demographic, economic, and health status of United States citizens. Data can be found at state, county, city and census tract levels. The U.S. Census Bureau conducts over 100 surveys and programs annually. A complete list can be found [here](#).

Accessing and Using Data

The U.S. Census Bureau provides many different datasets. To explore all the publicly available data, click [here](#).

Data from the [Current Population Survey](#) (CPS) provides information on income, poverty, and health insurance coverage. The data can be presented in [data tables](#), [interactive tools](#), or [datasets](#).

The [American Community Survey](#) (ACS) is the largest household survey and collects data on social, housing, economic, and demographic information. The data can be presented in [tables](#) and [maps](#). When searching for data on the site, the search results will display 1-year, 3-year, and 5-year estimates for the nation or selected geography from the most recent release.

Types of Data

- Health insurance coverage status
- Disability data
- Fertility
- HIV/AIDS data
- Healthcare and Social assistance program data



Customizable and downloadable ACS and CPS datasets are also available using the [Microdata tool](#). Users will first select a dataset and year. The custom table will consist of select variables and geographies and users will get to customize the table layout.

[QuickFacts](#) provides statistics for all states and counties, and for cities and towns with a population of 5,000 or more. The data can be viewed in table, map, or chart format. There is also a dashboard to view the three formats in one view.

[Census COVID-19 Impact Report](#) presents selected Census Bureau demographic and economic data to help assist with COVID-19 decision making. The data can help locate areas with at-risk

populations and businesses that can be used to focus COVID-19 response efforts. The data can also help organizations working with people and businesses in their area recover from the pandemic by helping them allocate their resources to those areas with the greatest need.

Helpful Links

1. [Census Data](#)
2. [Health Data](#)
3. [Census Tract Analysis](#)
4. [Center for Enterprise Dissemination Services and Consumer Innovation \(CEDSCI\)](#)

Support Contact Information CED SCI Support

Email: cedsci.feedback@census.gov

Published Reports, Existing Data Reports, and Data Tables (Maryland Level Data)



Maryland State Health Improvement Process (MD SHIP)



Description

The Maryland State Health Improvement Process (MD SHIP) in 2022 most likely transitioned towards aligning with the goals outlined in Healthy People 2030, the most recent iteration of national health objectives set by the U.S. Department of Health and Human Services. While official confirmation might be pending, the 39 measures assessed by MD SHIP likely began to incorporate healthy People 2030.

These new areas of focus could encompass social determinants of health, maternal and infant health, or mental health. It's important to remember that data used in the 2022 MD SHIP would have been collected earlier, possibly in 2021 or even 2020. Local Health Improvement Coalitions (LHICs) would've been finalizing or implementing their Community Health Improvement Plans .

Type of Data

- Health beginnings: Infant birth rate, death rate, high school graduation rate, blood lead rate
- Healthy livings: Obesity, smoking rates, STD rates, life expectancy
- Healthy communities: Lead levels, death rates, injury rates, suicide rates
- Access to health care: Wellness visits, PCP visits, emergency visits, dental visits
- Quality preventative care: Vaccination rates, emergency visits for chronic conditions, cancer mortality rates



Accessing and Usind the Data

Data can be viewed within the MD SHIP website, with tools available to modify and filter the data. Data can also be exported to excel for further analysis.

Helpful Links

1. [MD SHIP Website](#)
2. [FAQs](#)

Contact Information

Email: mdh.marylandship@maryland.gov



Health Services Cost Review Commission (HSCRC)



Description

HSCRC gathers data sets from acute care hospitals and specialty hospitals in Maryland. Data includes financial and patient level administrative data on all inpatient and outpatient visits.

Types of Data

Financial Data

- Unaudited Financial Statements
- Revenue and Volumes Report
- Community Benefit Report
- Annual Debt Collection/Financial Assistance Report
- Audited Financial Statements
- Annual Report of Revenue, Expenses, and Volumes

Patient Data

- Dates of service
- Principle and secondary diagnosis and procedure codes
- Source and nature of admission
- Discharge status of patient
- Types of services provided
- Flag for diagnosis present on admission (POA)
- Demographics

Accessing and Usind the Data

Access to the public datasets described above requires the submission of an application to the HSCRC. More information on data requests can be found [here](#).

Reports are publicly available as excel data spreadsheets that can be downloaded from the link listed below.

Helpful Links

1. [MD HSCRC Website](#)
2. [Data Requests](#)

Support Contact Information

Phone: (410) 764-2605



Published Reports, Existing Data Reports, and Data Tables (National Level Data)



National Center for Education Statistics (NCES)



The National Center for Education Statistics (NCES) is the federal entity for collecting and analyzing data related to education in the U.S. There are two data sources available: National Assessment of Educational Progress (NAEP) and The Program for the International Assessment of Adult Competencies (PIAAC).





National Assessment of Educational Progress (NAEP)

Description

NAEP includes a range of subjects at grades 4, 8, and 12 to provide a comprehensive look at the academic areas that are a part of a student's education. Subjects include civics, economics, geography, mathematics, music and visual arts, reading, science, technology and engineering literacy, U.S. history, and writing.

Accessing and Using Data

The NAEP Data Explorer (NDE) is a web-based application for accessing National Assessment of Educational Progress (NAEP) data. After defining your criteria, you can view tables, run statistical tests, and create charts or other materials. The materials you create are available for export, and your reports can be saved, copied, and shared with others.

Helpful Links

- [NAEP Website](#)
- [National Data Explorer Tool Help](#)

Types of Data

- Student performance in various subject areas
- Background variables from students, teachers, and schools.

The Program for the international Assessment of Adult Competencies (PIAAC) Description

PIAAC is a household study that has been developed under the auspices of the OECD, an international organization of member countries. Adults were surveyed in the U.S. and 23 other participating jurisdictions in 2012, 9 additional jurisdictions in 2014, and 5 more countries in 2017. Internationally these three rounds of data collection in PIAAC are combined for international comparisons. The goal of PIAAC is to assess and compare the basic skills and the broad range of competencies of adults around the world.

Types of Data

Household Background Questionnaire.

- Educational background
- Workplace experiences and skills
- Occupational attainment
- Skill use (reading, writing, math and ICT) at work and in everyday life
- English language learners' skills (speaking, reading and writing)
- Civic participation
- Health behaviors and practices

Prison Background Questionnaire

- Educational background and education in prison
- Non-academic programs, training, and other activities in prison
- Workplace experiences and skills prior to incarceration and in prison
- Skill use (reading, writing, math and ICT) at work prior to incarceration and in prison
- Skill use (reading, writing, math and ICT) in everyday life in prison

Accessing and Using the Data

The National Center for Education Statistics developed the [International Data Explorer \(IDE\)](#) to allow for analysis of education systems. The IDE allows you to explore survey questionnaire variables, create tables, charts, and maps, and create statistical analyses.

Helpful Links

1. [PIAAC Website](#)
2. [PIAAC International Data Explorer Help Guide](#)

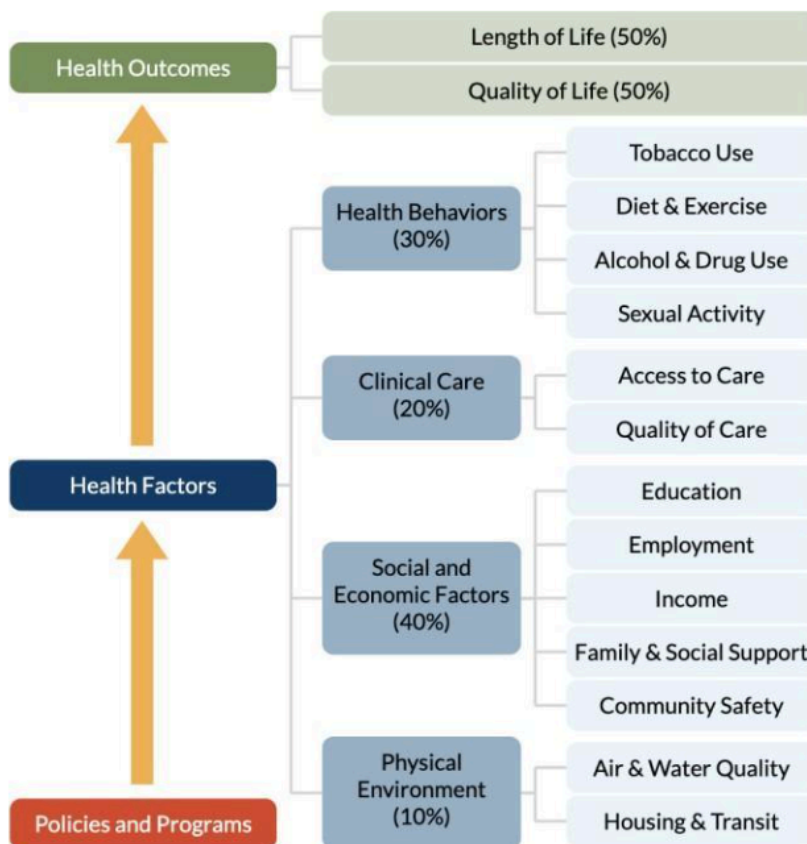


University of Wisconsin Population Health Institute and Robert Wood Johnson County Health Rankings & Roadmanps

Description

The University of Wisconsin Population Health Institute and Robert Wood Johnson County Health Rankings & Roadmaps (UW/RWJF County Health Rankings & Roadmaps) measure the health of U.S. counties and use more than 30 measures of health outcomes and health factors.

This model is known as the County Health Rankings Model.



County Health Rankings model © 2014 UWPHI



Types of Data

- Health Outcomes
 - Length of life
 - Quality of life
- Health Factors
 - Health Behaviors
 - Clinical Care
 - Social Economics factors
 - Physical Environments

Accessing and Usind the Data

The UW/RWJF County Health Rankings & Roadmaps includes an interactive web-based system that allows users to input the county of interest. Once you select your county, its snapshot for the current year will populate. This snapshot provides more than 30 measures of county-level data. You can compare counties' values to other counties, to the state, or top U.S. performers.

Helpful Links

1. [UW/RWJF County Health Rankings & Roadmaps website](#)



Dignity Health Community Need Index (CNI)



Description

The Community Needs Index (CNI) provides a score for every populated ZIP code in the United States on a scale of 1.0 to 5.0 based on socio-economic barriers. A score of 1.0 indicates a ZIP code with the least need, while a score of 5.0 represents a ZIP code with the most need compared to the U.S. national average (score of 3.0). The socio-economic indicators include: income, cultural, education, insurance, and housing.

Accessing and Using Data

The Community Need Index includes a [web-based interactive system](#) that generates the CNI statistics and a map. Users may analyze CNI scores by ZIP code, city, or county. The system allows users to generate a report that looks at the ZIP codes in a specific city or county that can be used to compare different sub-areas.

Helpful Links

1. [CNI Website](#)



Data Sources

- 2020 Demographic Data, The Claritas Company
- 2020 Poverty, The claritas Company
- 2020 Insurance Coverage Estimates, IBM Watson Health

Type of Data

- Wighted Average CNI Score
- Median CNI Score

Additional Tools and Resources





Maryland State Resources

<https://www.countyhealthrankings.org/explore-health-rankings/use-data/go-beyond-the-snapshot/find-more-data/maryland-state-resources>

Common Data Types in Public Health Research:

<https://www.nihlibrary.nih.gov/resources/subject-guides/health-data-resources/common-data-types-public-health-research>

UC Berkeley Health Statistics & Data:

<https://guides.lib.berkeley.edu/publichealth/healthstatistics>

Center for Medicare and Medicaid Services

<https://www.cms.gov/>

Sources from Counties' Community Health Assessments

The list below represents a catalog of the data and information sources counties listed in their community health assessment reports for the time period 2014 to 2021. The listing is arranged based on frequency of use, with the most used resources at the top of the list.





- **Maryland State Health Improvement Process (MD SHIP)**
- **Behavioral Risk Factor Surveillance System (BRFSS)**
- **U.S. Census Data**
- **Maryland Youth Risk Behavior Survey**
- **National Vital Statistics Reports and County Health Rankings**
- **Centers for Medicare and Medicaid Services**
- **Maryland Vital Statistics Annual Reports**
- **Maryland Health Services Cost Review Commission**
- **American Community Survey**
- **Feeding America**
- **Maryland Crime Data**
- **University of Wisconsin Population Health Institute and Robert Wood Johnson County Health Rankings & Roadmaps**
- **CDC WONDER (Wide-ranging Online Data for Epidemiologic Research)**
- **Fatality Analysis Reporting System**
- **Maryland Department of Health and Mental Hygiene Vital Statistics Report**
- **Maryland Department of the Environment**
- **Maryland Governor's Office for Children**
- **National Cancer Institute**



- **National Center for Education Statistics**
- **U.S. Environmental Protection Agency**
- **American Lung Association**
- **Institute for Health Metrics and Evaluation**
- **Maryland Department of Education**
- **Maryland State Board of Elections**
- **Maryland Youth Tobacco Survey**
- **Small Area Health Insurance Estimates**
- **The Dartmouth Atlas of Health Care**
- **U.S. Bureau of Labor Statistics**
- **U.S. Department of Agriculture Food Environment Atlas**
- **CDC National Center for Health Statistics**
- **Community Needs Index (CNI)**
- **CRISP**
- **Drug and Alcohol Intoxication Deaths in Maryland**
- **Healthy People 2020/2030**
- **HRSA Area Health Resources Files**
- **Maryland Department of Health and Mental Hygiene's Annual Cancer Reports**
- **Maryland Department of Human Resources**
- **Maryland HIV Annual Epidemiological Profile**
- **Maryland STI Data and Statistics**
- **State Cancer Profiles**

- **United Way ALICE Report**
- **American Cancer Society (ACS)**
- **Area Health Resource File**
- **CDC Community Health Status Indicators (CHSI)**
- **CDC Diabetes Public Health Resource**
- **CDC Heart Disease Statistics and Maps**
- **CDC Mental Health Surveillance**
- **CDC MMWR**
- **CDC National Immunization Survey**
- **CDC U.S. Adult Mental Illness Surveillance Report**
- **CDC/ATSDR Social Vulnerability Index**
- **Claritas, Inc.**
- **Community Commons**
- **Community Health Indicators Report Card**
- **Disease Registries**
- **FBI Uniform Crime Reports**
- **Healthy Communities Institute**
- **Kids Count**
- **Maryland Cancer Report**
- **Maryland Center for Zoonotic and Vectorborne Diseases Laboratory Confirmed Rabies in Maryland Reports**
- **Maryland Chartbook of Minority Health and Minority Health Disparities**
- **Maryland COVID-19 Data**
- **Maryland Department of Commerce**

- **Maryland Unintentional Drug and Alcohol Intoxication Deaths Annual Report**
- **MDH Cases of Selected Notifiable Conditions**
- **MDPHP National Electronic Disease Surveillance System Database**
- **National Association of County and City Health Officials (NACCHO)**
- **National Alliance on Mental Illness (NAMI)**
- **National Low Income Housing Coalition**
- **National Provider Identification File**
- **Opportunity National Community Needs Index**
- **Prevention and Health Promotion Administration, DHMH**
- **Professional Research Consultants (PRC) Survey**
- **SAMHSA National Survey on Drug Use and Health**
- **School Digger Maryland School District Rankings**
- **U.S. Cancer Statistics Data**
- **U.S. Department of Agriculture: Economic Research Services**
- **U.S. Department of Education**
- **U.S. Department of Housing and Urban Development**
- **Maryland Department of the Environment Annual Report on Childhood Blood Lead Surveillance in Maryland**