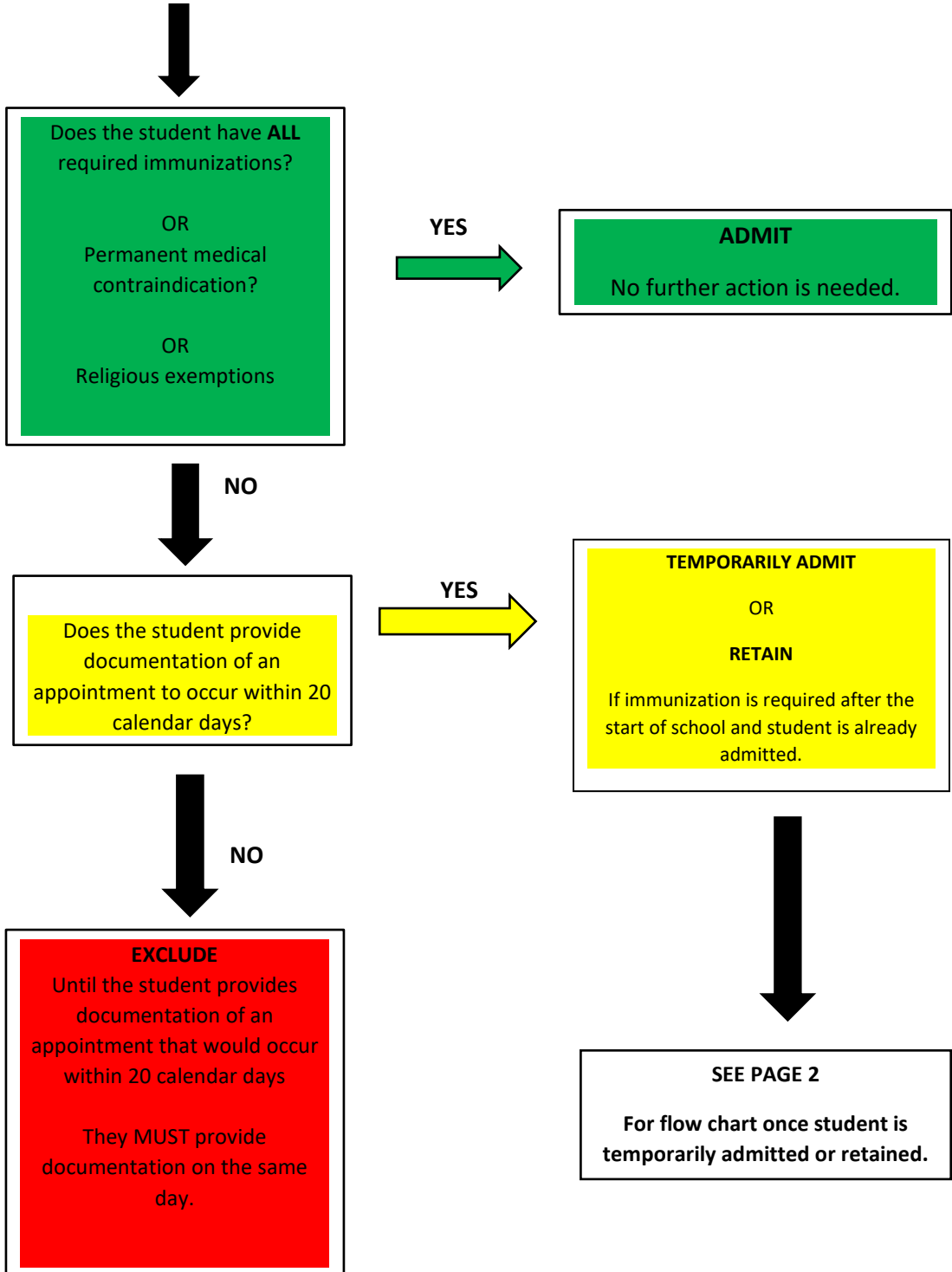


**IMMUNIZATION DECISION TREE:
Student Admittance, Retention, and Exclusion**

First Day of School
OR
First day student is required to provide documentation of immunization.
(e.g., 5th birthday, new enrollee, returning after exclusion)
NOTE: The process regarding management of immunization compliance for military and homeless students should follow all applicable state and federal statutes and regulations.



IMMUNIZATION DECISION TREE: Student Admittance, Retention, and Exclusion

If a student is temporarily admitted or retained, the student may be granted more than one temporary admission or retention to complete a vaccine series.

The student may only be temporarily admitted or retained with documentation of an appointment to occur within 20 calendar days of the next required dose or documentation of a medical contraindication.

NOTE: A 20 calendar day temporary retention or admission does not restart with a missed appointment.

NOTE: the process regarding management of immunization compliance for military and homeless students should follow all applicable state and federal statutes and regulations.

