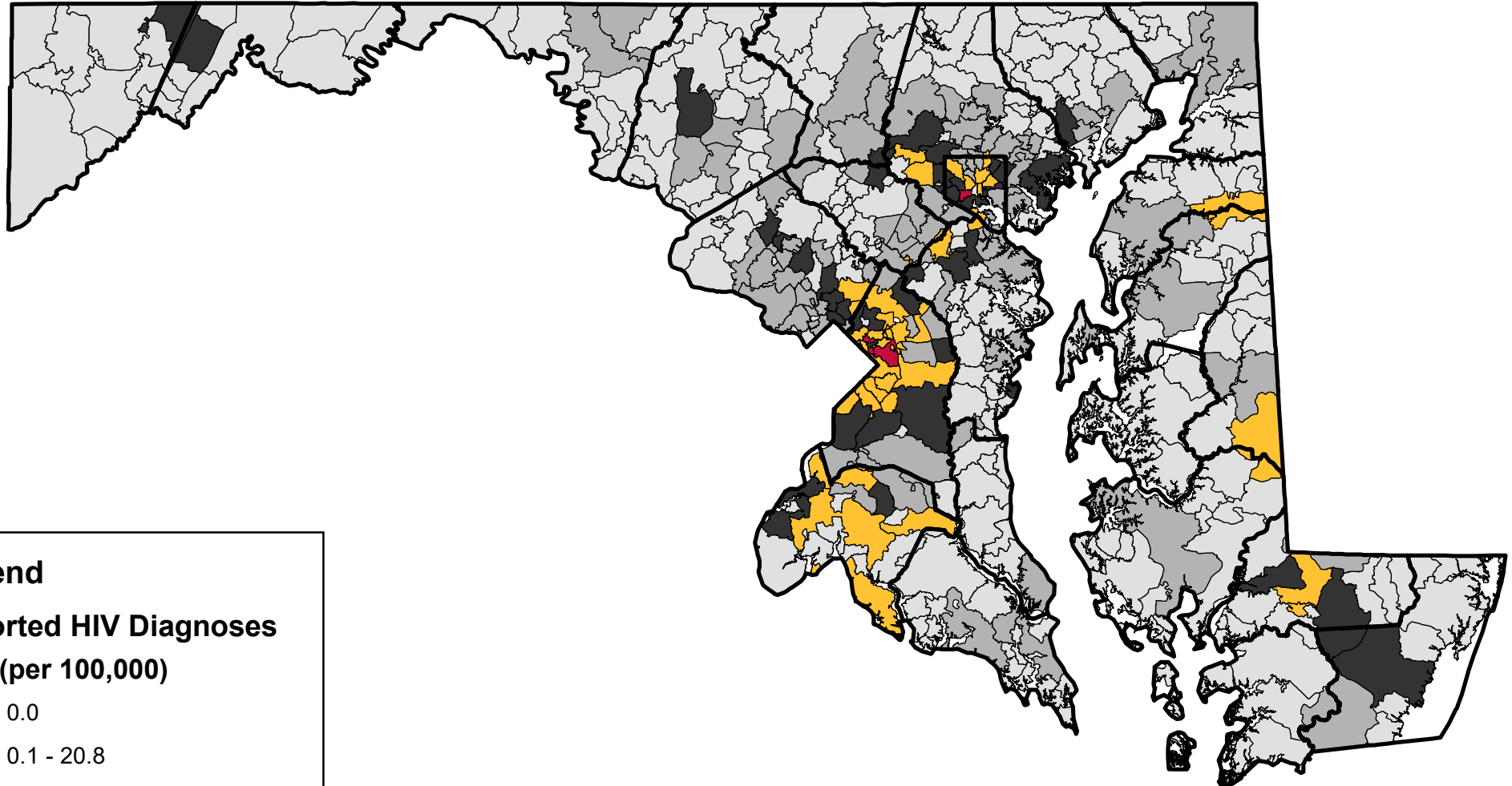


Reported HIV Diagnoses by ZIP Code, Maryland, 2019



Legend

Reported HIV Diagnoses Rate (per 100,000)

- 0.0
- 0.1 - 20.8
- 20.9 - 36.2
- 36.3 - 65.5
- 65.6 - 98.1
- ZIP Code < 1,000 Residents
- County Boundary

Source: Center for HIV Surveillance, Epidemiology, and Evaluation, Maryland Department of Health. Data reported through June 30, 2020 and represents adults/adolescents (age 13+) only. Address data based upon residence at HIV diagnosis. Data for ZIP Codes with less than 1,000 residents in the 2019 US Census Bureau Population Estimates have been suppressed for privacy.

