



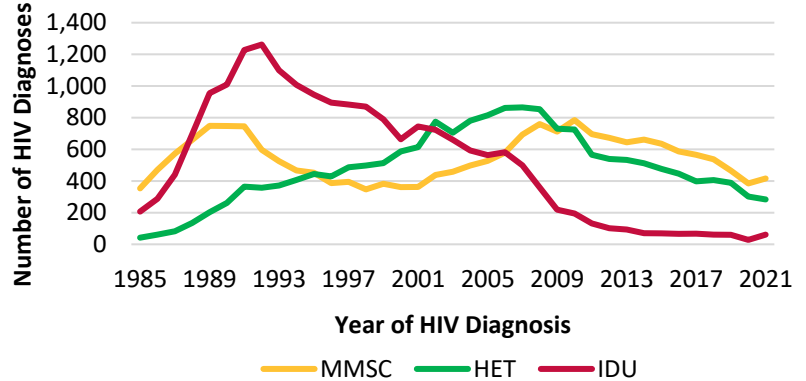
HIV BY EXPOSURE CATEGORY IN MARYLAND, 2021

DATA REPORTED THROUGH JUNE 30, 2022

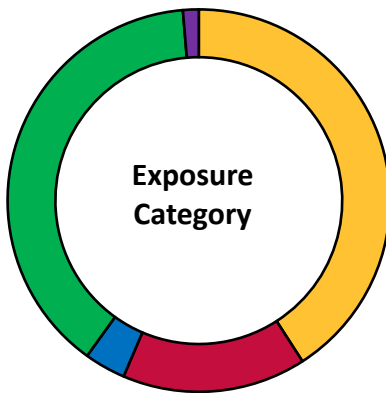
New HIV Diagnoses

- In 2021, there were 773 new HIV diagnoses in Maryland. Of the 578 male diagnoses, 72.0% were attributed to MMSC, and 89.3% of the 195 female diagnoses were attributed to HET.
- The proportion of new HIV diagnoses that were attributed to IDU has decreased from 1992 (52.7%) to 2021 (7.9%).

HIV Diagnosis Trends in Exposure Categories

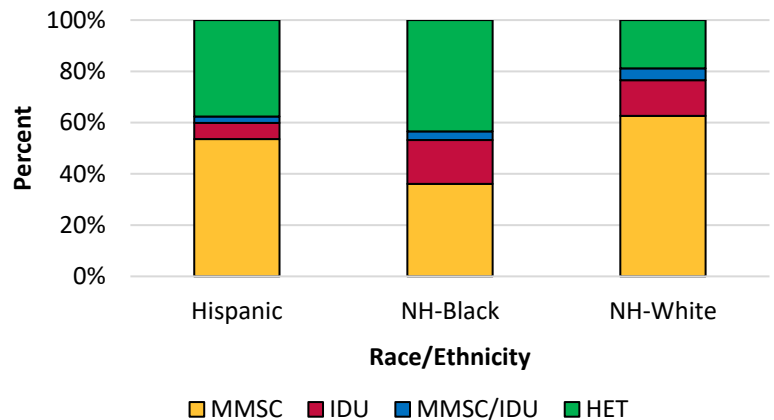


Characteristics of Marylanders Living with HIV



■ MMSC ■ IDU ■ MMSC/IDU ■ HET ■ Perinatal

Race/Ethnicity and Exposure Category, 2021



- The number of Marylanders living with diagnosed HIV that are attributed to HET and MMSC exposures are nearly equal.
- The distribution of exposure categories is very different for males and females. Of females living with diagnosed HIV, 77.8% have an exposure attributed to HET, while more than half of males have an exposure attributed to MMSC (61.4%).

NH: Non-Hispanic | **HET:** Heterosexual Contact | **IDU:** Injection Drug Use | **MMSC:** Male-to-male Sexual Contact

Center for HIV Surveillance, Epidemiology and Evaluation
Prevention and Health Promotion Administration
Maryland Department of Health
<http://phpa.health.maryland.gov/OIDEOR/CHSE>

Multiple imputation was used to estimate and adjust for missing exposure category. Data represents adults and adolescents (ages 13+) only. Data source: Maryland Enhanced HIV/AIDS Reporting System (eHARS). Data for 2020 and 2021 should be interpreted with caution due to the impact of the COVID-19 pandemic on access to HIV testing and care-related services.