

Striving to Reduce Youth Violence Everywhere S.T.R.Y.V.E.



Corey D. Lumpkin, MPH
July 23, 2015

Division of Violence Prevention
National Center for Injury Prevention and Control
Centers for Disease Control and Prevention

The findings and conclusions in this presentation are those of the authors and do not necessarily represent the official position of the Centers for Disease Control and Prevention.



Presentation Objectives

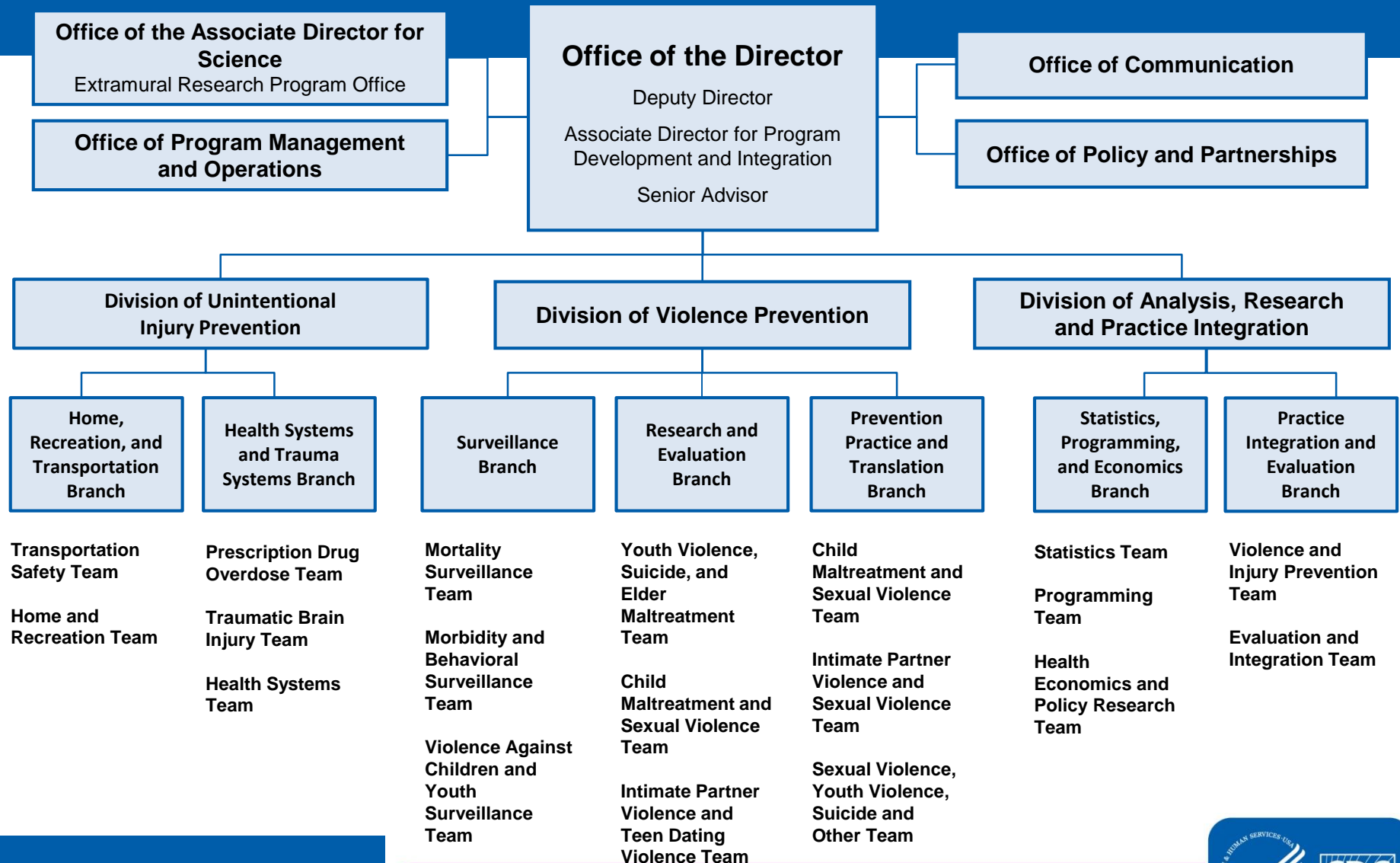
- ❑ **Provide an overview of CDC's strategy for youth violence prevention**
- ❑ **Discuss CDC's national initiative to prevent youth violence before it starts, Striving to Reduce Youth Violence Everywhere (S.T.R.Y.V.E.)**
- ❑ **Highlight the work and youth violence prevention approaches of the four STRYVE pilot communities (Portland, Houston, Boston, & Salinas, CA)**

National Center for Injury Prevention and Control



- Established at CDC in 1992
- Only federal agency to deal exclusively with non-work-related injuries
- Intentional (violence) and unintentional injuries
- Public health approach
- Prevention – primary, secondary and tertiary
- Rigorous science base
- Multidisciplinary and multi-sectoral approaches

National Center for Injury Prevention and Control



National Center for Injury Prevention and Control



NCIPC - Division of Violence Prevention

Division of Violence Prevention Director

James A. Mercy, PhD

Deputy Division Director

Joni Young, MS

Senior Advisor

Linda Dahlberg, PhD

Program Analyst

Erica Lowe

Policy Lead

Beth Reimels, JD

Associate Director of Science

Thomas Simon, PhD

Communications Lead

Jennifer Middlebrooks, MPH,MSW

Surveillance Branch

Alex Crosby, MD—Branch Chief
Leroy Frazier, Jr., MSPPH-Deputy

Mortality Surveillance Team

Janet Blair, PhD –Team Lead

Morbidity and Behavioral Surveillance Team

Jeffrey Hall, PhD – Team Lead

Violence Against Children and Youth Surveillance Team

Howard Kress, PhD –Team Lead

Research and Evaluation Branch

Jeffrey Herbst, PhD—Branch Chief
Kendell Cephas-Childers, MPH-Deputy

Youth Violence, Suicide and Elder Maltreatment Team

Bradford Bartholow, PhD – Team Lead

Child Maltreatment and Sexual Violence Team

Kathleen Basile, PhD– Team Lead

Intimate Partner Violence and Teen Dating Violence Team

Linda Anne Valle, PhD –Team Lead

Prevention Practice & Translation Branch

Gayle Payne, PhD – Branch Chief
Ana L. Arroyo-Martinez, Deputy

Child Maltreatment, Youth Violence, Suicide, and Other Team

Neil Rainford, MHSE –Team Lead

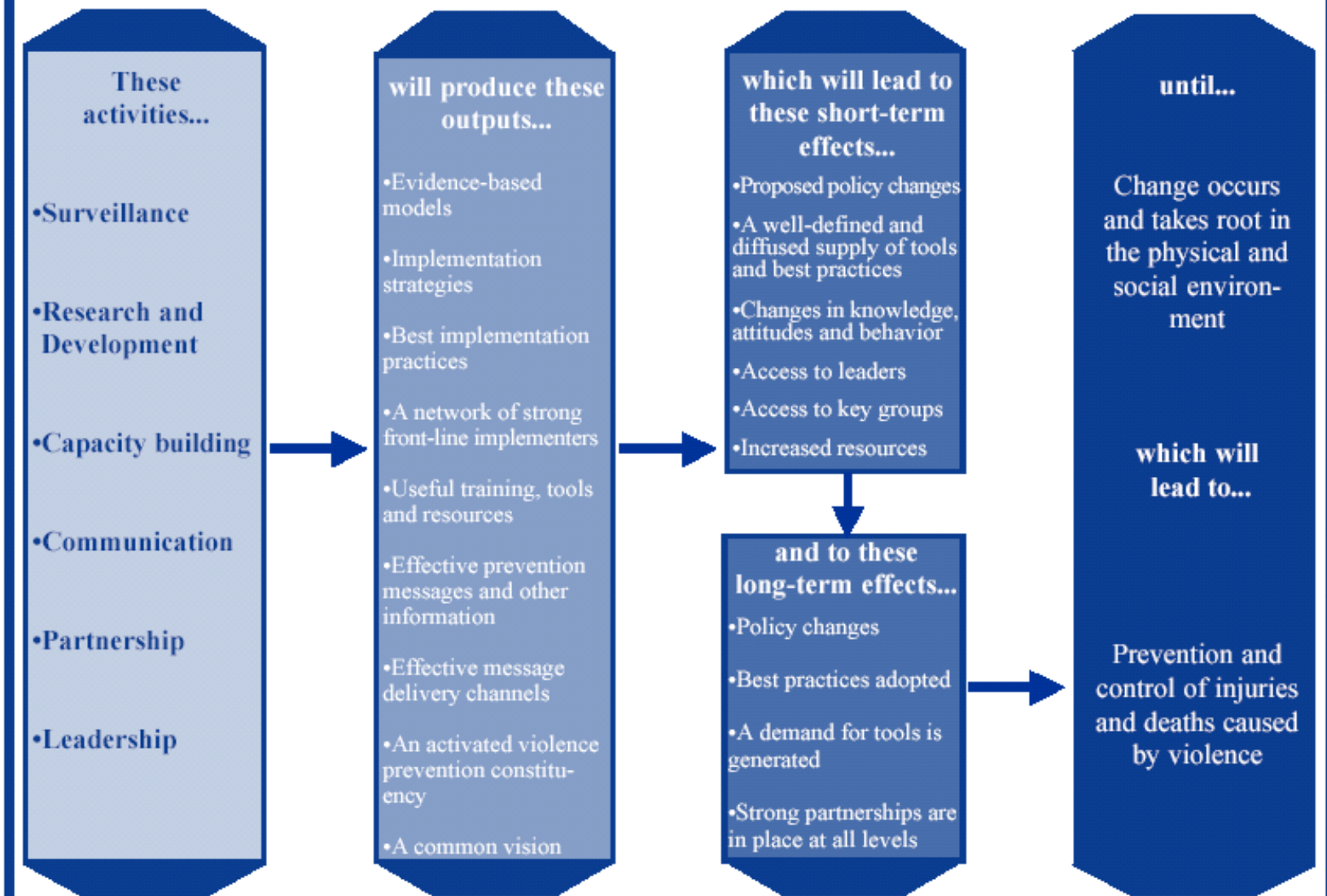
Intimate Partner Violence and Sexual Violence Team

Kimberley Freire, PhD – Team Lead

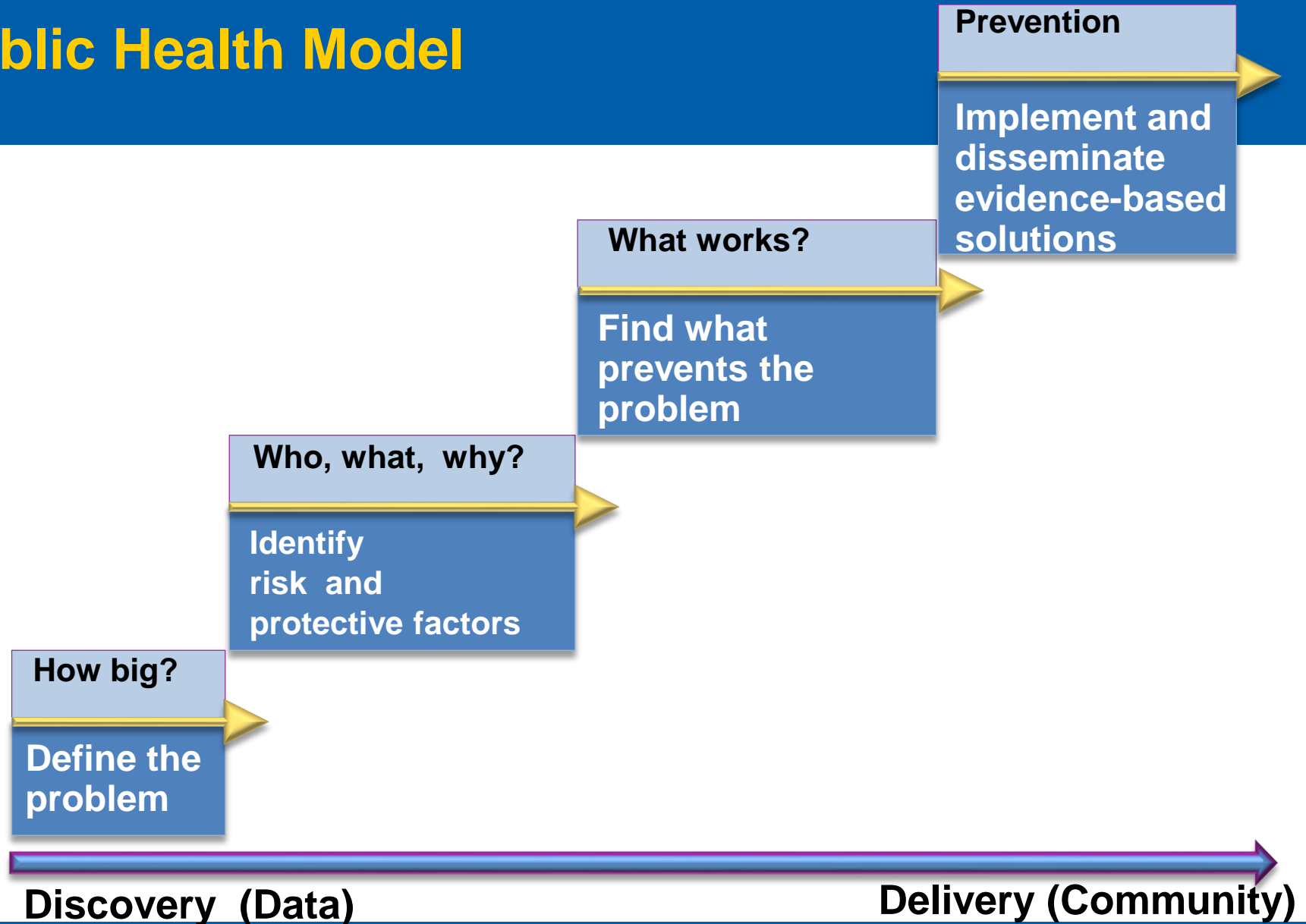
Sexual Violence Team

Dawn Fowler, PhD – Team Lead

CDC's Strategic Approach to Violence Prevention



Public Health Model



Youth Violence



Youth Violence

The Problem:

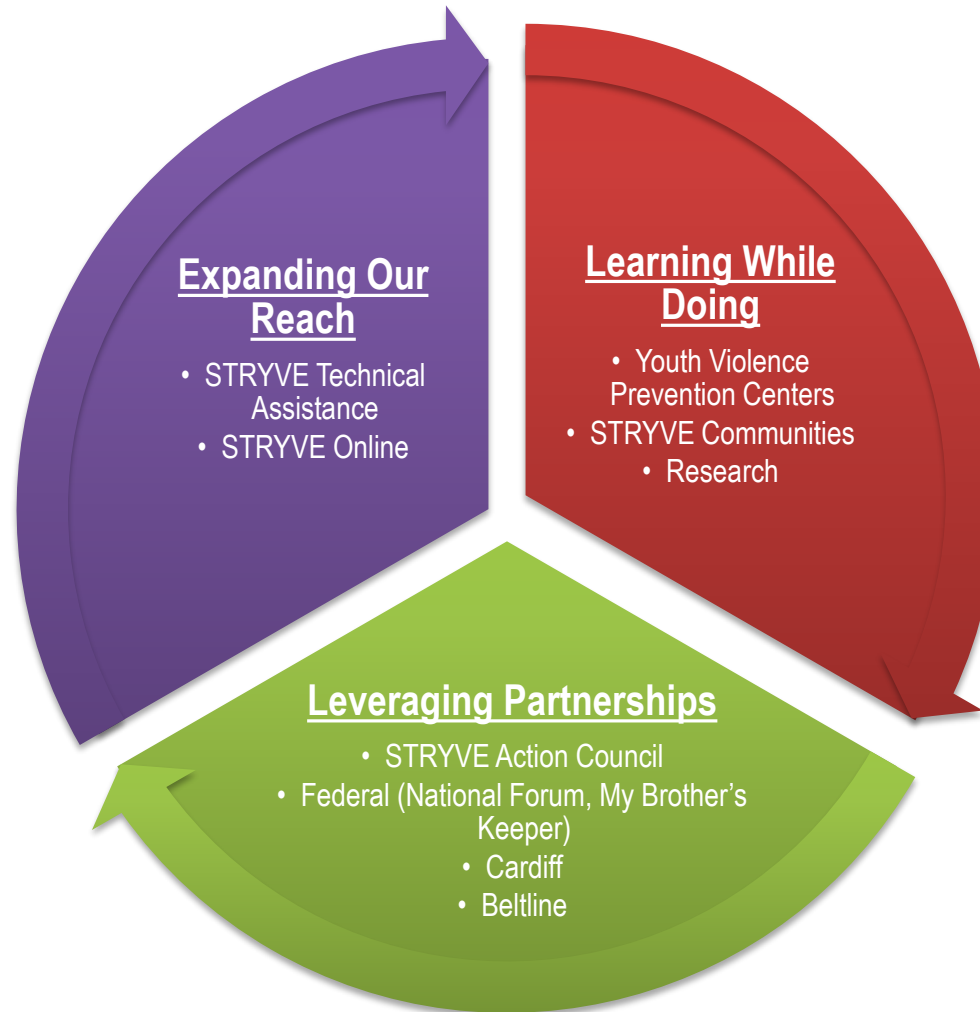
- Homicide is the 2nd leading cause of death for ages 15-24
- 738,000+ youth emergency department visits for assault-related injuries in 2010
- 30% of high school students reported being in a physical fight and 20% reported being bullied in 2010

Examples of CDC Activities:

- STRYVE
- Dating Matters
- UNITY Road Map
- Youth Violence Prevention Centers



Division of Violence Prevention's Youth Violence Prevention Strategy





National Initiative to Prevent Youth Violence *Before it Starts*



STRYVE's goals are to:

- Foster increased recognition of STRYVE principles* and the roles, responsibilities, and capacity of public health as a part of leadership to prevent youth violence.
- Promote widespread adoption of prevention strategies based on the best available evidence.
- Bring about national reductions in youth violence.

*STRYVE Principles= Public health approach; comprehensive strategies, strategies based upon the best available evidence; increased multi-sector partnerships

National Initiative to Prevent Youth Violence *Before it Starts*



STRYVE's goals are to:

- Increase awareness that youth violence can and should be prevented
- Promote the use of youth violence prevention approaches that are based on the best available evidence
- Provide guidance to communities on how to prevent youth violence

The Challenge

- How to build local health department capacity and infrastructure to plan, implement, and evaluate youth violence prevention efforts?
- How to implement strategies that will result in increases in protective factors and decreases in risk factors in 5 years?
- How to take all of this to scale without funding every community in the United States?

STRYVE Approach

- Fund local health departments
- Develop virtual training and technical assistance
- Target audience for both efforts health departments and large, multi-sector coalitions

STRYVE COMPONENTS



STRYVE Funded Local Health Departments

- Total funds awarded \$4.5 million over the project period 2011-2016
 - \$225,000 per year per site
- Sites
 - Boston Public Health Commission
 - Houston Department of Health and Human Services
 - Monterey County Health Department (CA)
 - Multnomah County Health Department (OR)

STRYVE Pilot Community Goals

CONVENE A MULTI-SECTOR COALITION TO...

1. Develop a comprehensive youth violence prevention plan
2. Implement appropriate and feasible programs, policies, and practices (based on best available evidence) across multiple social ecological levels
3. Track and measure improvements in organizational and community capacity

STRYVE Pilot Community Goals (continued)

4. Develop an evaluation plan to track and measure
 - Implementation of plan
 - Specific implementation process measures for selected programs, policies, and/or practices implemented during the project, and multiple indicators of youth violence
5. Develop a sustainability plan that identifies
 - The financial, human, and time resources needed to implement the comprehensive prevention plan, and sustain the coalition and programs, policies, and/or practices that were successfully implemented during the project

Recipient Activities

Phase I: Coalition Development & Strategic Planning

- Identity & engage appropriate public health staff
- Develop a new or partner with an existing multi-sector coalition
- Assess organizational & community capacity
- Develop a comprehensive prevention plan
- Conduct resource planning

Phase II: Implementation, Evaluation, & Sustainability

- Manage/maintain coalition involvement
- Select & prioritize activities to implement & evaluate
- Conduct implementation activities
- Develop an evaluation plan & evaluate
- Develop a sustainability plan
- Continue to assess capacity

STRYVE Site Updates



Youth Empowerment Solutions



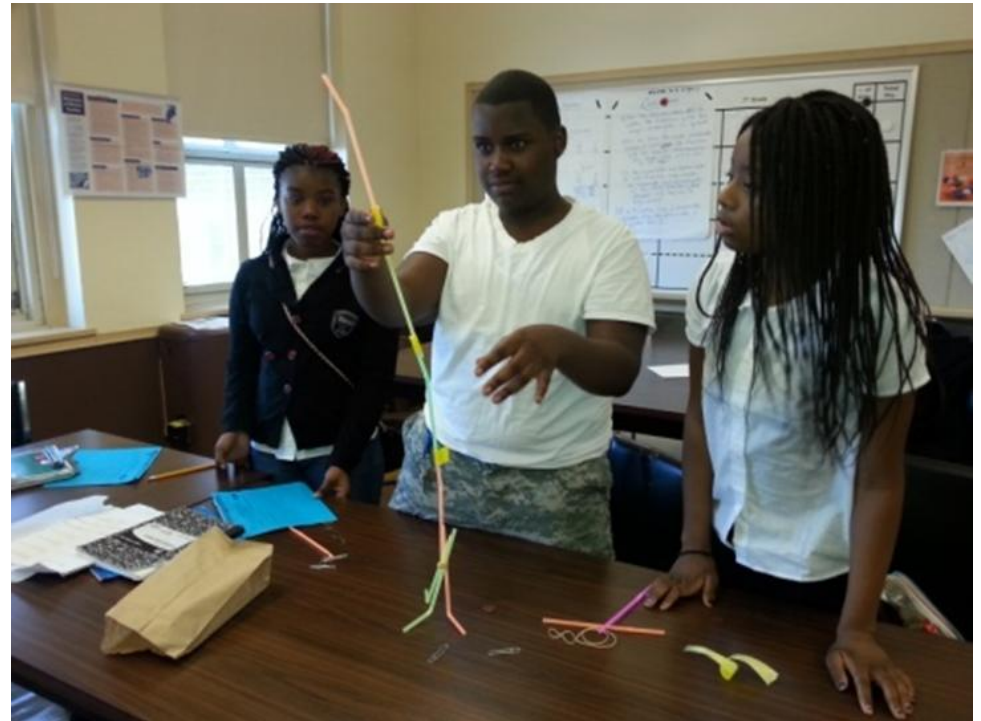
Houston

- Crime Prevention Through Environmental Design
- Positive Behavioral Interventions & Supports



Boston

- Parenting Wisely



Salinas

- Olweus Bullying Prevention Program
- Crime Prevention Through Environmental Design



Portland

- Crime Prevention Through Environmental Design



Thank You

Questions?

