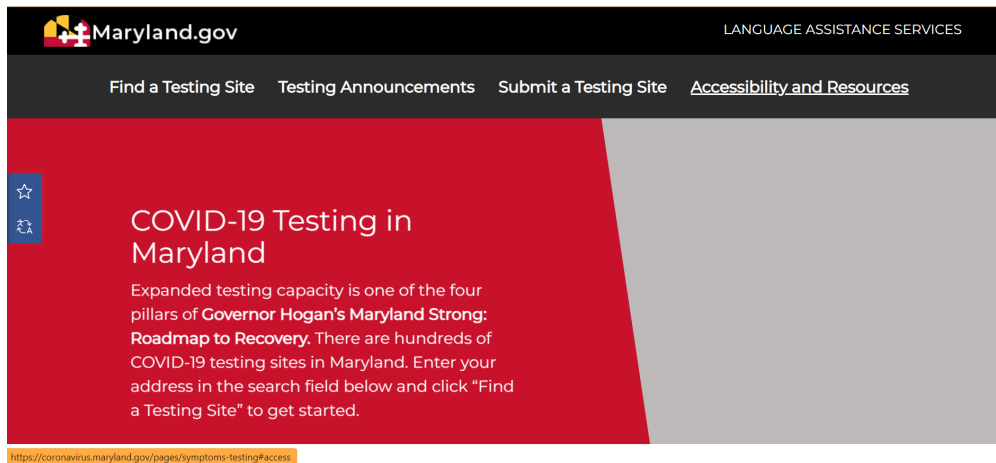


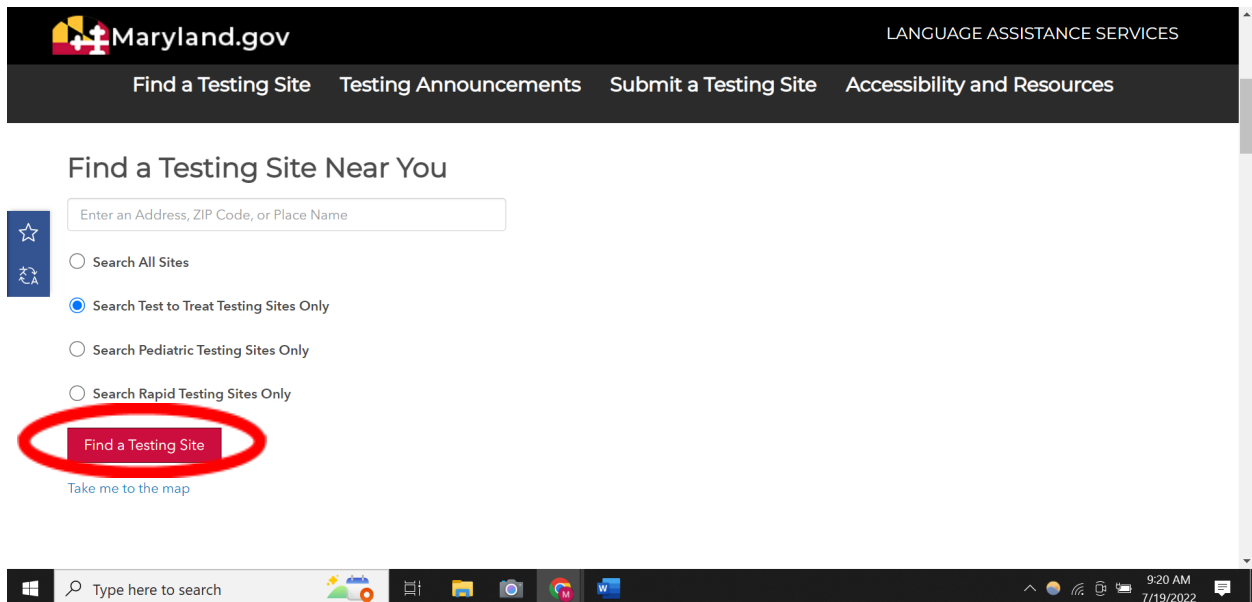


How to use the MDH Test to Treat (T2T) locator

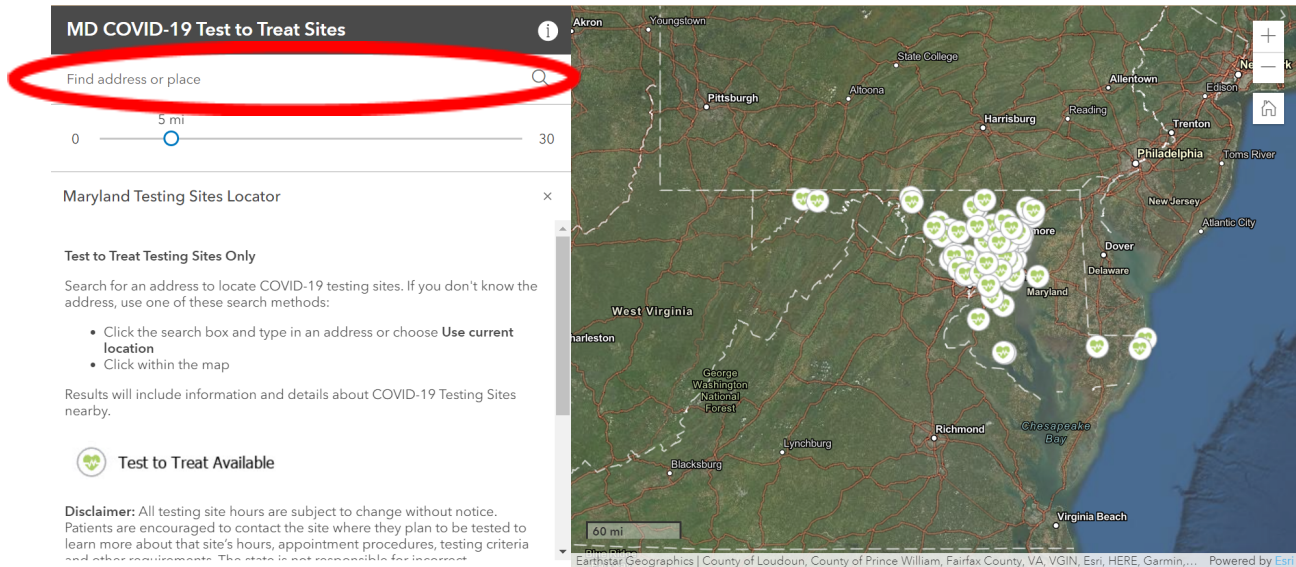
Step 1: Go to covidtest.maryland.gov



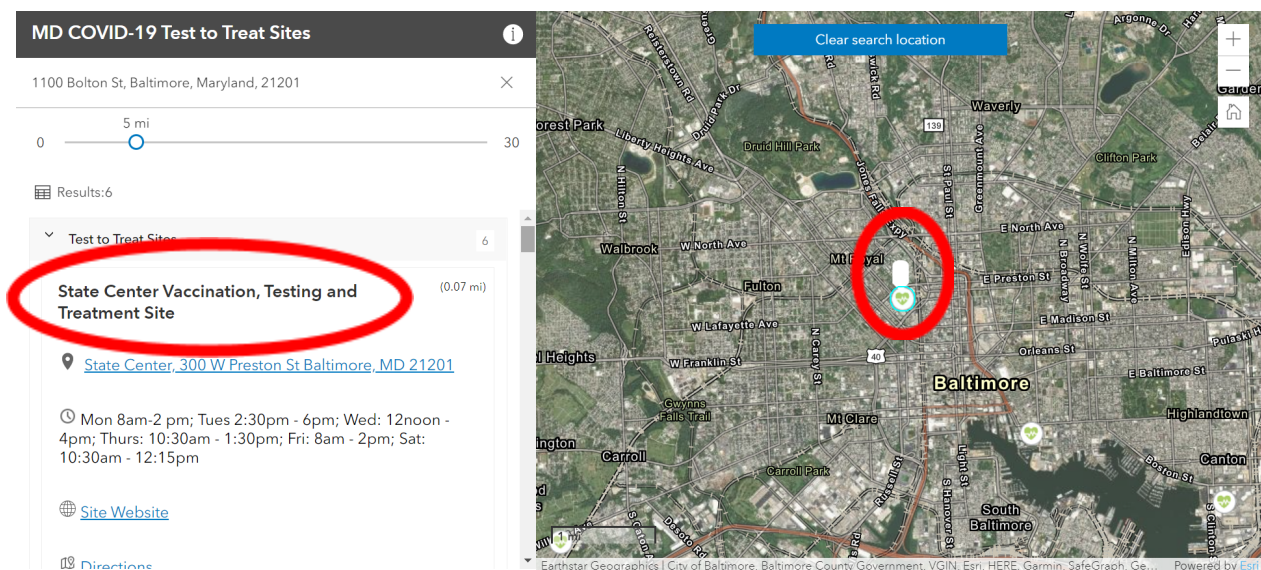
Step 2: Scroll down to “Find a Testing Site Near You”, select “Search Test to Treat Testing Sites Only”, then click on the red “Find a Testing Site” button.



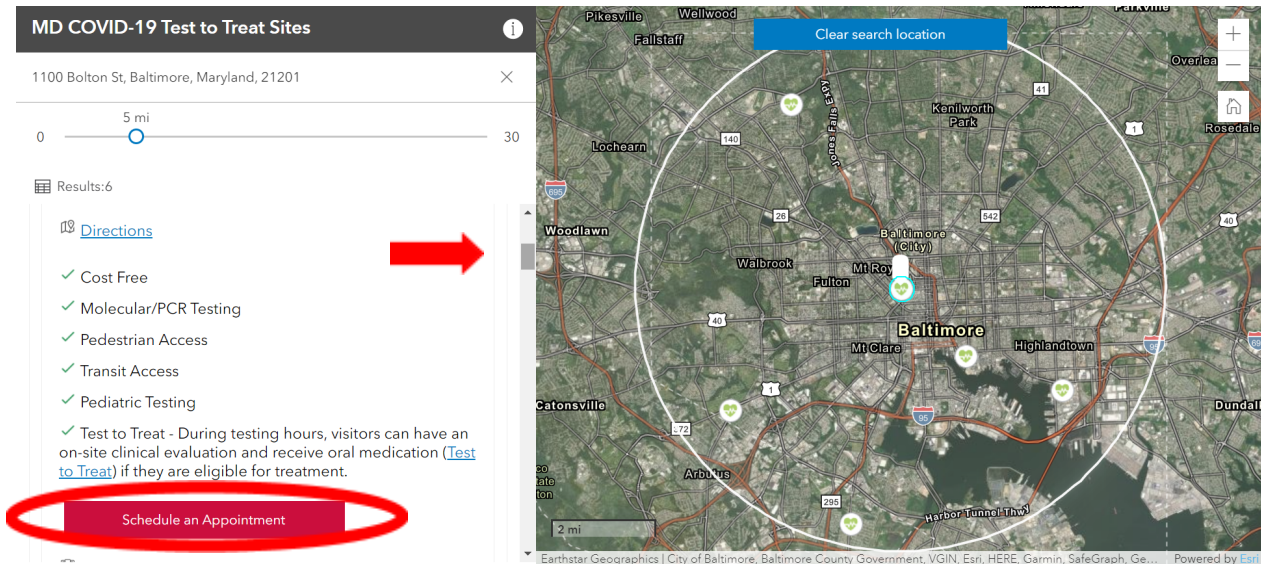
Step 3: Search for testing locations by either entering your address in the search box or using the + and – buttons to zoom in and out. You can also double click on the map to zoom in. Test to Treat locations are represented by green and white heart icons.



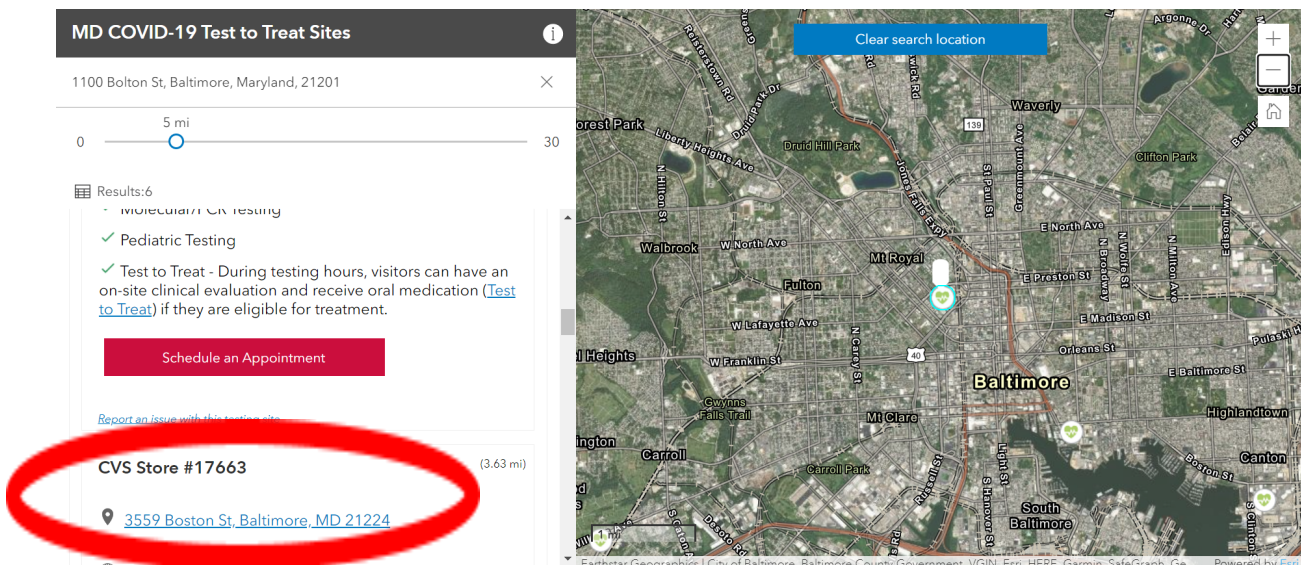
Step 4: Once you have found a Test to Treat location near you, click on the heart icon to see address, hours of operation, website and other contact information on the left-hand side.



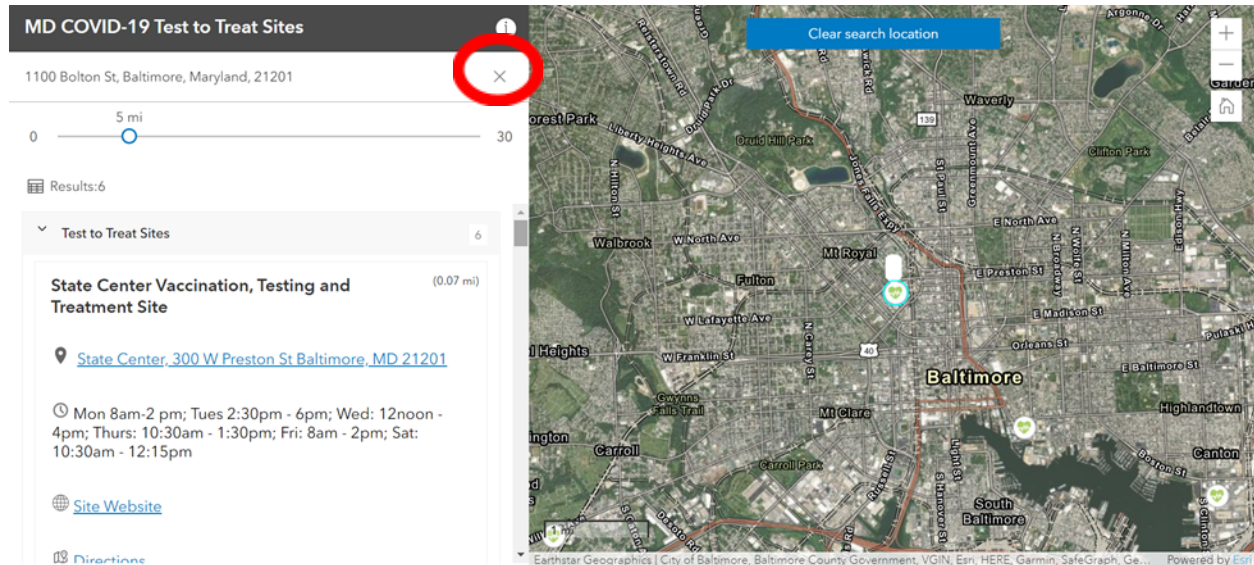
Step 5: Scroll down to see site features and whether an appointment is required. If so, use the red “Schedule an Appointment” button to make an appointment. Not all sites require appointments but making one may result in a shorter wait time.



Step 6: If you would like to see other Test to Treat locations in the area, scroll down further to see the list of the next closest locations.



Step 7: To clear the information and search for a different Test to Treat location, click the “X” next to the address bar or the blue “Clear search location” button and repeat the steps above.



Please call 1-855-MD-GOVAX for assistance if you are experiencing difficulty with the system.