



2012

**Annual Report
Office of the
Chief Medical Examiner**

State of Maryland

Table of Contents

Cases Reported to OCME

- Action Taken 1
- Autopsied 2
- Manner of Death 3

Manner of Death

- Classified by Sex 4
- Classified by Race 4

Medical Examiner Cases

- Cause and Manner of Death 5
- A Three-Year Comparison 7
- Manner and Jurisdiction 8
- Type and Jurisdiction 8

Toxicologic Testing

- Percentage of Cases Positive for Alcohol and/or Drugs 9

Drug Abuse Death

- By Jurisdiction (3-Year Comparison) 10
- Undetermined Manner Only 11

Homicide Deaths

- Cause of Death 12
- A Five-Year Comparison 13
- Deaths by Age 14

Firearm Deaths

- A Five-Year Comparison 15

Sudden Infant Death Syndrome

- A Five-Year Comparison 16
- Classified by Age 17
- Classified by Race and Sex 17

Sudden Unexplained Death in Infancy

- Classified by Age 18
- Classified by Race and Sex 18

Suicide Death

- Cause of Death 19
- Youth Suicides 20
- Deaths by Age 21

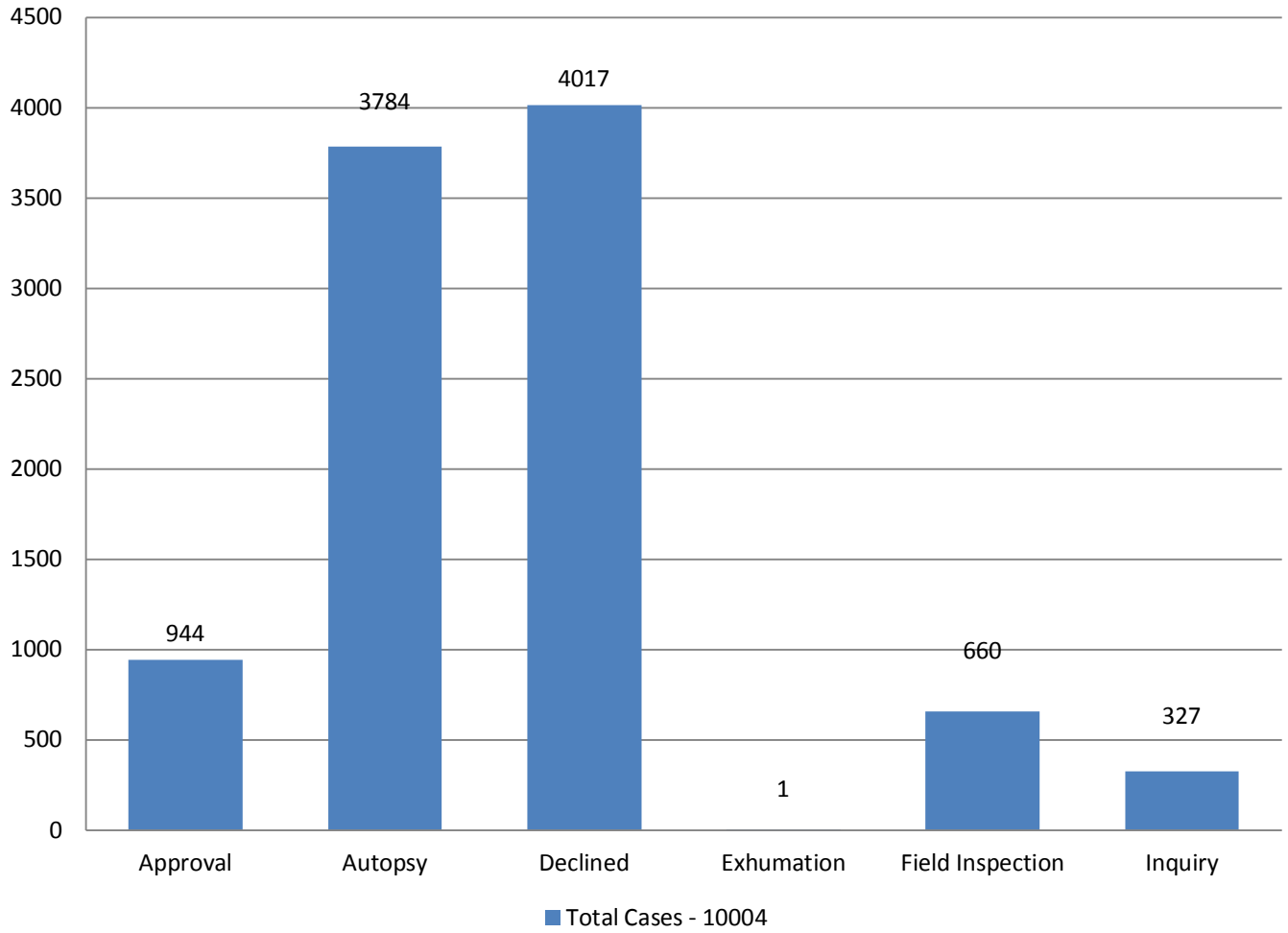
Transportation Deaths

- Classified by Activity 22
- Type of Vehicle 23
- Classified by Age 24
- Alcohol/Drug Results 25
- Alcohol Levels in Cases Testing Positive 26

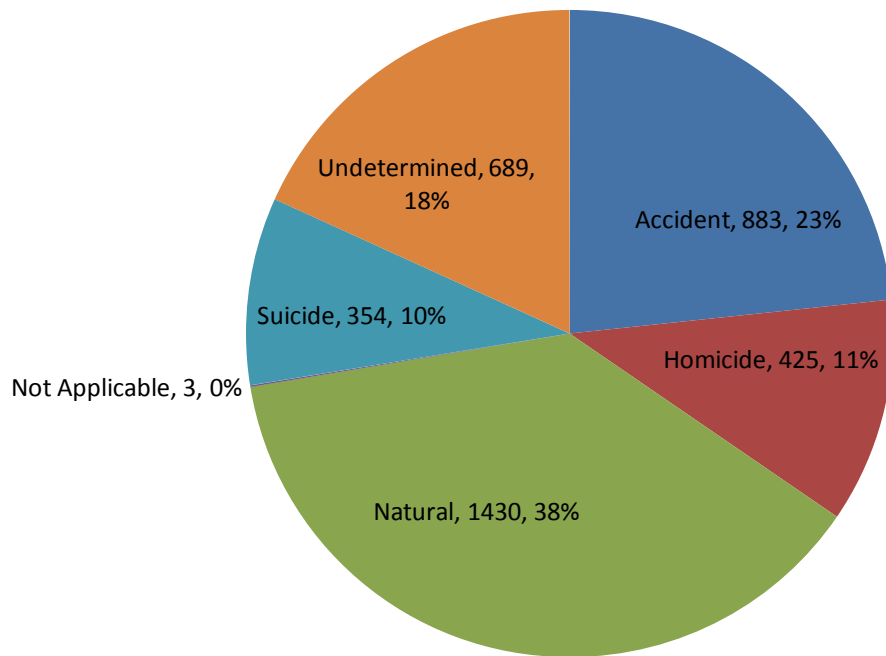
Addendum

- Miscellaneous Data 27

Cases Reported to OCME - 2012 Action Taken



2012 Medical Examiner Cases Autopsied*

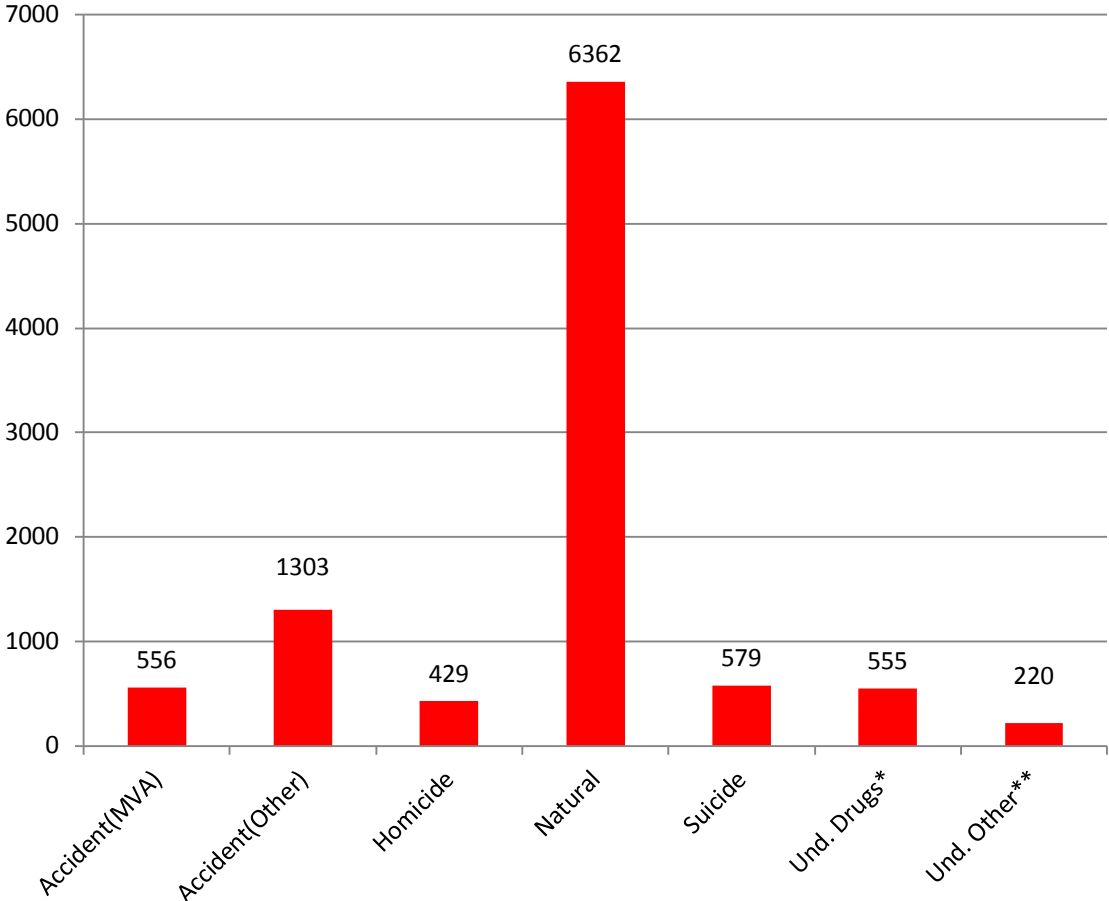


Total Cases Autopsied - 3784

*Three cases were classified as “not applicable” (e.g. stillborn & non-human remains).

**Four homicides were not autopsied due to final disposition prior to Medical Examiner notification

2012 Cases Reported to OCME Manner of Death



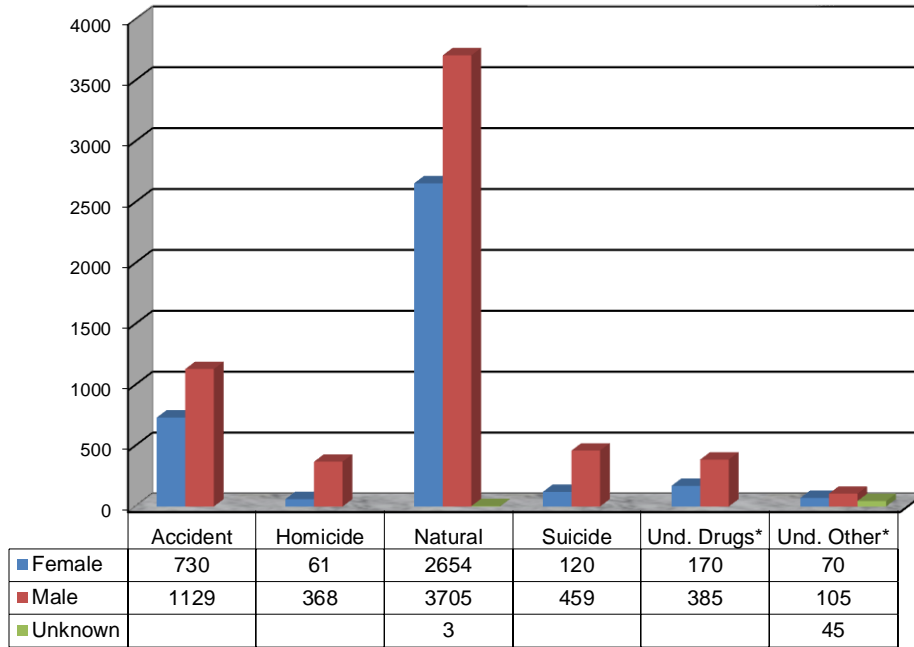
*Undetermined Manner: Drugs/Narcotics

** Undetermined Manner: Other

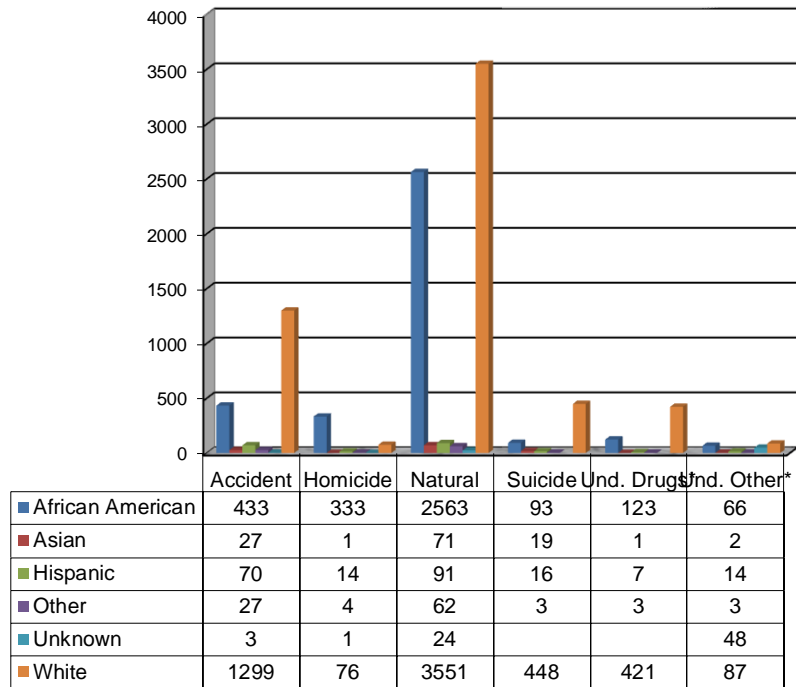
Total Cases - 10004

Manner of Death 2012

Classified by Sex



Classified by Race



*Undetermined Manner: Drugs/Narcotics

** Undetermined Manner: Other

Cause Of Death	Manner of Death					Total
	Accident	Homicide	Natural	Suicide	Undeter- mined	
Infectious disease	6		99		2	107
AIDS/HIV			19			19
Other infectious disease	6		80		2	88
Malignant neoplasms (Cancer)	11		360			371
Endocrine and metabolic disease	15	1	155			171
Diabetes	1		57			58
Other Endocrine and metabolic	14	1	98			113
Mental Disorders	8		35		2	45
Alcohol abuse	8		33		1	42
Narcotic abuse			2		1	3
Nervous system disease	19		86	1	4	110
Meningitis	1		4			5
Other CNS	9		47	1	1	58
Seizure disorder	9		35		3	47
Circulatory system disease	461	1	4836	9	21	5328
Aneurysm	1		27			28
Cardiac arrhythmia	10		72		2	84
Cardiomyopathy	8		45			53
Cardiovascular disease	170	1	4038	5	16	4230
Cerebrovascular disease	209		323		1	533
Hemorrhage	12		18			30
Other cardiac	34		216	3	2	255
Pulmonary embolism	17		97	1		115
Respiratory system diseases	88	1	326	3	2	420
Asthma	1		44			45
Chronic obstructive pulmonary disease	8		67			75
Other respiratory	23	1	69	2	2	97
Pneumonia	55		139	1		195
Respiratory distress syndrome	1		7			8
Digestive system disease	11		182		3	196
Cirrhosis	2		48		1	51
Fatty liver			4			4
Gastrointestinal hemorrhage	2		75			77
Liver Disease			11			11
Other digestive	7		44		2	53
Congenital / Perinatal			31		49	80
Congenital/Perinatal			29		4	33
Sudden Infant Death Syndrome			2			2
Sudden Unexplained Death in Infancy (SUDI)					45	45

Cause Of Death	Manner of Death					Total
	Accident	Homicide	Natural	Suicide	Undeter- mined	
Traumatic injury	927	409	8	317	27	1688
Blunt force	51	22		4	1	78
Fracture	170	2				172
Gunshot wound	2	319		270	2	593
Multiple injuries	441	13		22	9	485
Other trauma	263	8	8	6	15	300
Sharp force/cutting		45		15		60
Poisoning	162	1	14	79	593	849
Alcohol and drug intoxication	2			1	1	4
Alcohol intoxication	20		5	2	37	64
Carbon monoxide	10			11	1	22
Cocaine and alcohol intoxication	2				7	9
Cocaine intoxication	6		2		27	35
Drug intoxication/abuse	21		5	45	62	133
Narcotic and alcohol intoxication	16	1		4	84	105
Narcotic intoxication	85		2	16	374	477
Asphyxiation	101	13	19	164	6	303
Airway obstruction/Aspirated stomach content	33		19			52
Drowning	38			14	6	58
Hanging	1			131		132
Smoke inhalation	8					8
Strangulation/Asphyxiation	21	13		19		53
Hypothermia	2		1			3
Hyperthermia	5					5
Thermal Injuries (Burns)	1			1		2
Electrocution	3					3
Other non-natural cause	39	3		5	6	53
Other natural cause			210			210
Unknown cause					20	20
Non-human remains					40	40
	1859	429	6362	579	775	10004

Manner of Death - 3 Year Comparison

Medical Examiner Cases*: Manner of Death, Maryland 2012

Manner of Death	Number	%
Accident	1859	18.6%
Homicide	429	4.3%
Natural	6362	63.6%
Suicide	579	5.8%
Undetermined	775	7.7%
Total	10004	100%

Medical Examiner Cases: Manner of Death, Maryland 2011

Manner of Death	Number	%
Accident	1684	17.1%
Homicide	431	4.4%
Natural	6432	65.4%
Suicide	563	5.7%
Undetermined	729	7.4%
Total	9839	100%

Medical Examiner Cases: Manner of Death, Maryland 2010

Manner of Death	Number	%
Accident	1630	16.1%
Homicide	456	4.5%
Natural	6591	65.2%
Suicide	526	5.2%
Undetermined	900	8.9%
Total	10103	100%

*Because of rounding, percentages do not necessarily total 100.

2012 Manner and Jurisdiction

2012 Manner	Accident	Homicide	Natural	Suicide	Und.	Total
Allegany	44	3	88	12	14	161
Anne Arundel	110	13	576	50	81	830
Baltimore City	534	247	2185	82	238	3286
Baltimore County	230	21	501	88	101	941
Calvert	20	2	82	16	13	133
Caroline	11	2	13	1	2	29
Carroll	42	3	82	17	24	168
Cecil	27	4	56	13	17	117
Charles	29	4	59	14	15	121
Dorchester	8	0	27	5	3	43
Frederick	50	2	105	22	21	200
Garrett	15	0	33	2	1	51
Harford	69	3	258	28	35	393
Howard	56	5	123	22	21	227
Kent	13	0	27	5	1	46
Montgomery	188	18	629	72	51	958
OCME Inspection	1	0	0	0	0	1
Out-Of-State	0	0	2	0	0	2
Prince George's	192	81	879	59	67	1278
Queen Anne's	15	4	10	6	2	37
Saint Mary's	24	2	54	17	7	104
Somerset	8	3	27	3	0	41
Talbot	22	0	47	3	7	79
Washington	76	3	135	22	25	261
Wicomico	54	8	284	12	21	379
Worcester	21	1	80	8	8	118
Total	1859	429	6362	579	775	10004

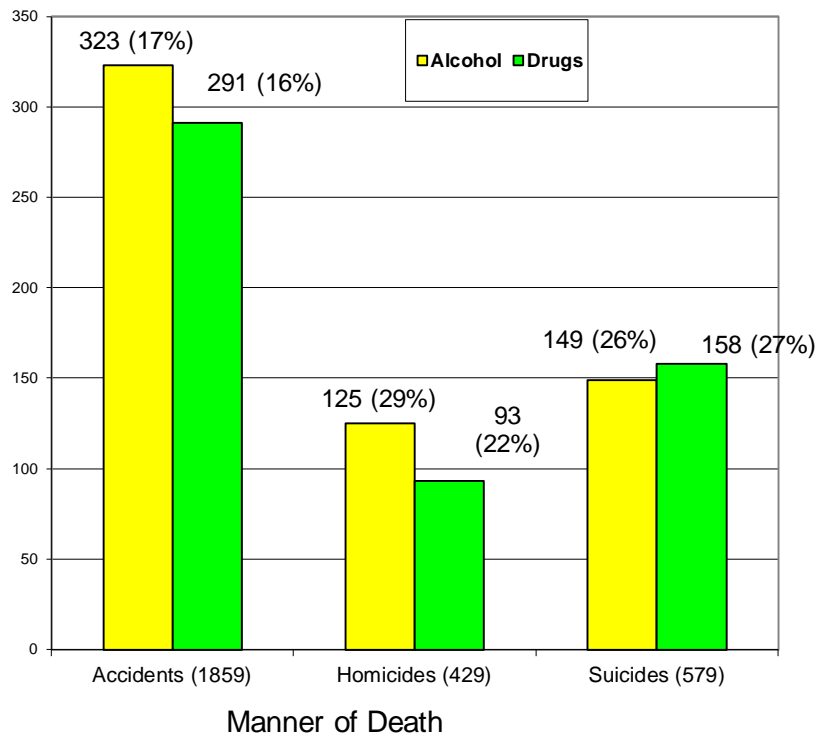
2012 Case Type and Jurisdiction

2012 Case Type*	Approval	Autopsy	Decline	Field Insp.	Inquiry	OCME Inspection	Total
Allegany	24	72	34	18	9	4	161
Anne Arundel	35	306	392	52	20	25	830
Baltimore City	337	1085	1549	99	143	74	3287
Baltimore County	143	383	256	91	24	43	940
Calvert	2	58	51	18	1	3	133
Caroline	2	17	3	6	0	1	29
Carroll	17	92	33	12	8	6	168
Cecil	4	74	14	12	8	5	117
Charles	11	67	23	12	2	6	121
Dorchester	1	22	9	8	1	2	43
Frederick	24	93	49	17	10	7	200
Garrett	3	19	14	12	2	1	51
Harford	24	161	158	27	10	13	393
Howard	32	98	56	26	7	8	227
Kent	4	22	9	7	2	2	46
Montgomery	121	304	410	73	32	18	958
Out-Of-State	0	1	0	1	0	0	2
Prince George's	71	502	567	83	24	31	1278
Queen Anne's	2	26	3	6	0	0	37
Saint Mary's	4	66	16	11	3	4	104
Somerset	1	21	16	3	0	0	41
Talbot	13	32	20	5	7	2	79
Washington	41	109	77	19	6	9	261
Wicomico	23	105	215	25	5	6	379
Worcester	5	49	43	17	3	1	118
Total	944	3784	4017	660	327	271	10003

*1 Exhumation in Baltimore County

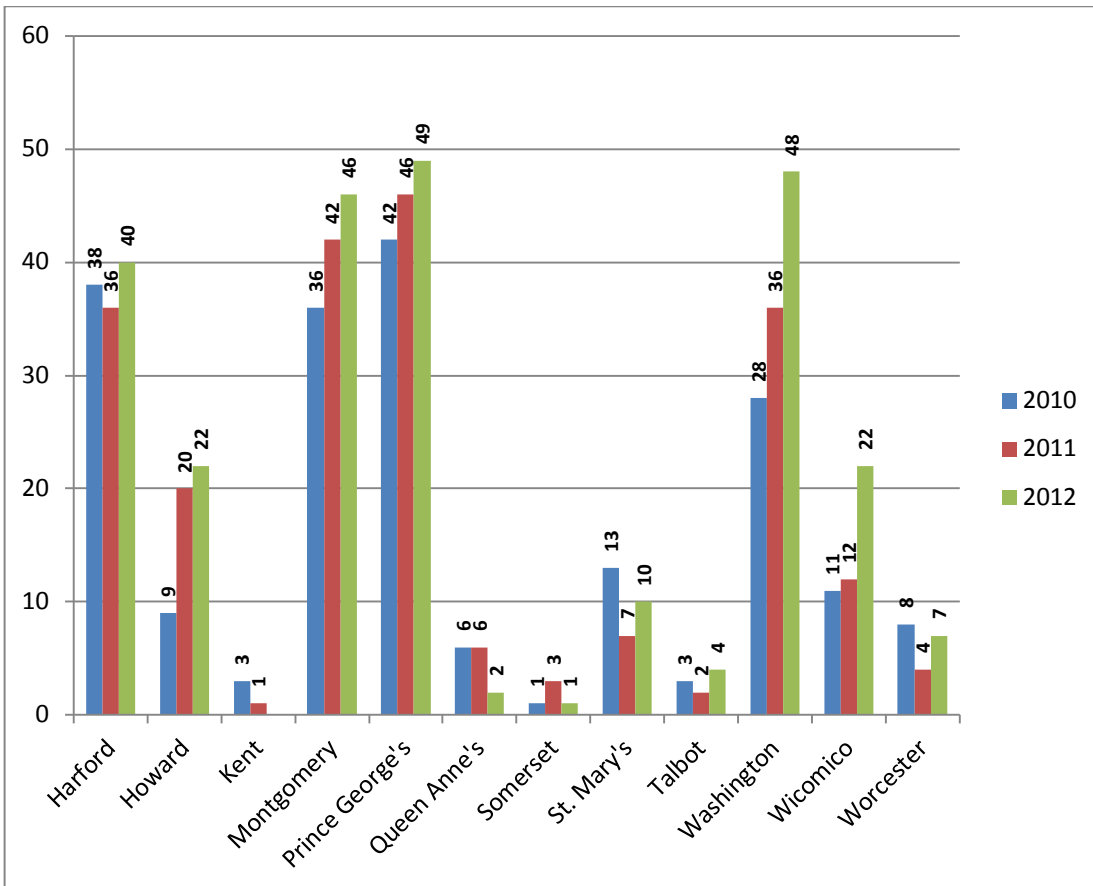
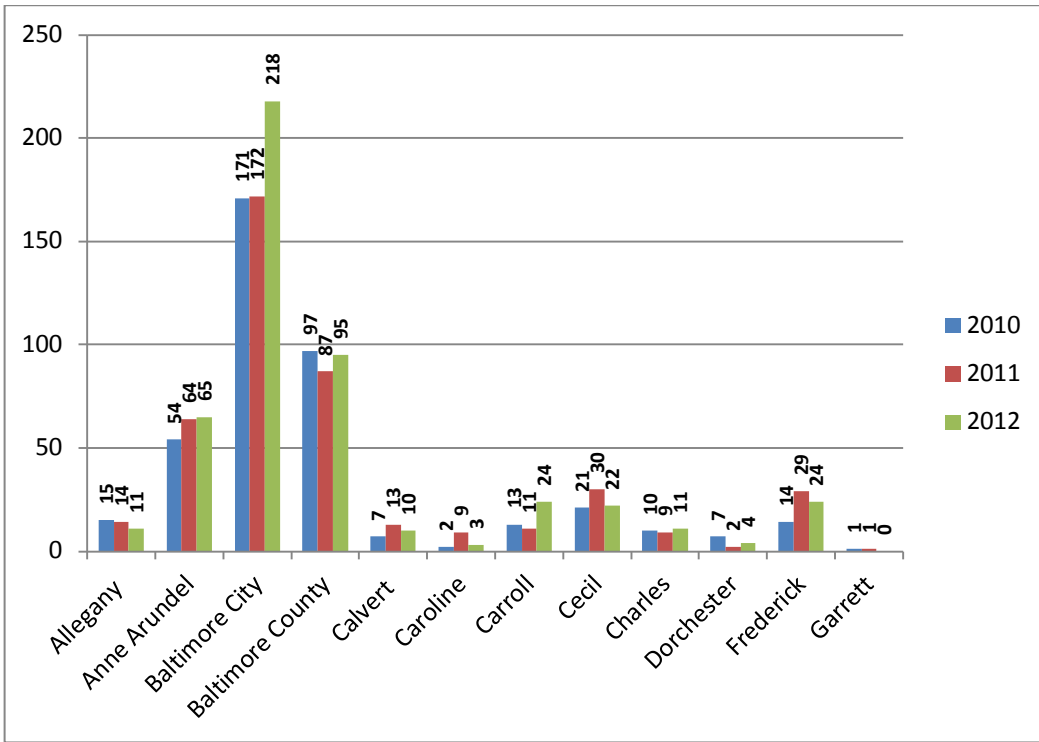
2012 Toxicology Testing

of Cases Positive for Alcohol and/or Drugs*
 (Percentage of the Manner of Death)
 *Drugs include heroin, morphine, cocaine, methadone and phencyclidine.

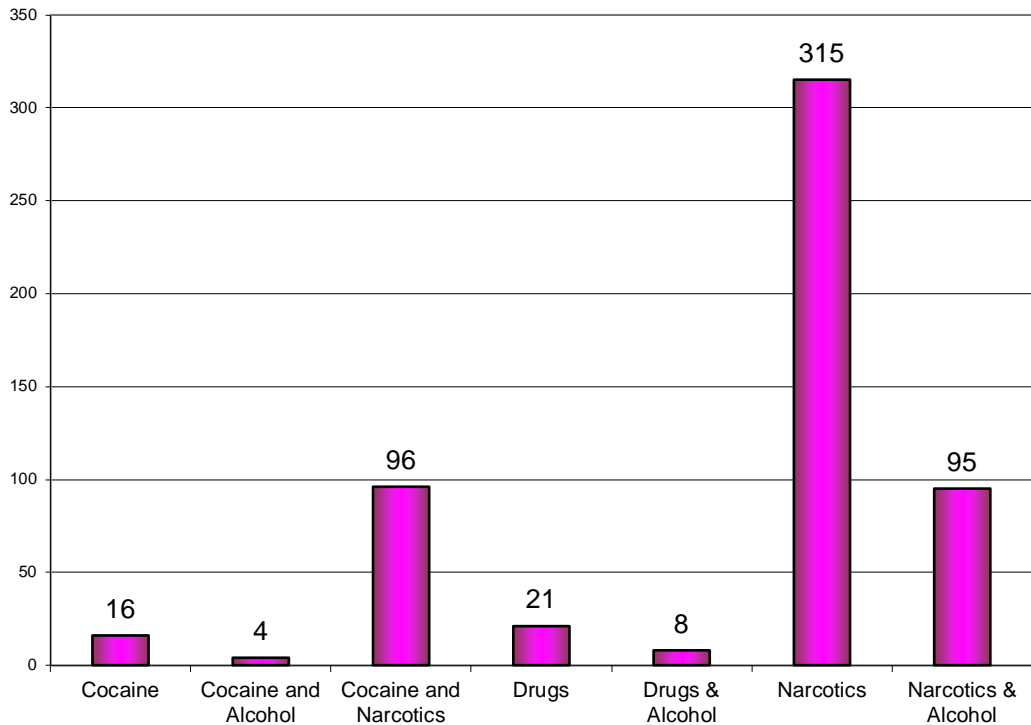


*Abused Drugs include Alprazolam, Amphetamine, Benzoylcegonine, Brompheniramine, Chlorpheniramine, Cocaine, Codeine, Diazepam, Diphenhydramine, Doxylamine, Fentanyl, Heroin, Hydrocodone, Hydroxyzine, Meperidine, Methadone, Methamphetamine, Methylenedioxyamphetamine, Methylenedioxymethamphetamine, Morphine, Nordiazepam, Normeperidine, Oxycodone, Phencyclidine, Propoxyphene, Tramadol, and Zolpidem. This list used in previous years was only Cocaine, Heroin, Methadone, Morphine and Phencyclidine.

Drug Abuse Deaths 3 Year Comparison by Jurisdiction 2010-2012



2012 Drug Abuse Deaths Undetermined Manner



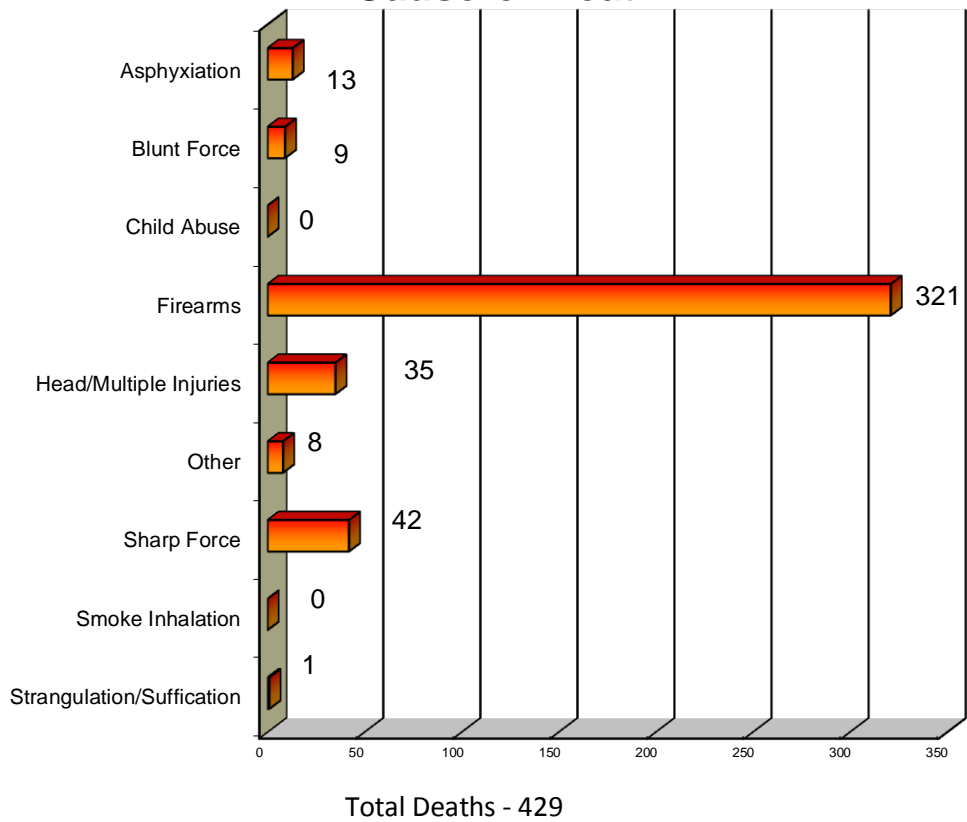
Total Cases - 555

Cocaine Tests: Benzoyllecgonine and Cocaine

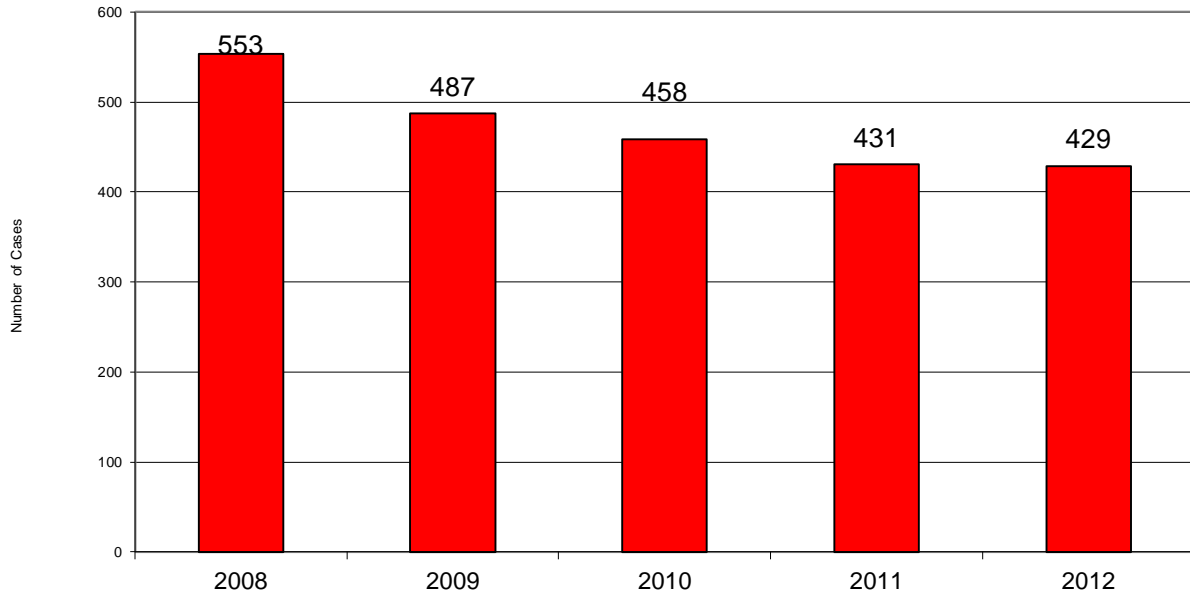
Drug Tests: Alprazolam, Amphetamine, Brompheniramine, Chlorpheniramine, Diazepam, Diphenhydramine, Doxylamine, Hydroxyzine, Methamphetamine, Methylenedioxyamphetamine, Methylenedioxymethamphetamine, Nordiazepam, Phencyclidine, Propoxyphene and Zolpidem

Narcotic Tests: Codeine, Fentanyl, Heroin, Hydrocodone, Meperidine, Methadone, Morphine, Normeperidine, Oxycodone and Tramadol

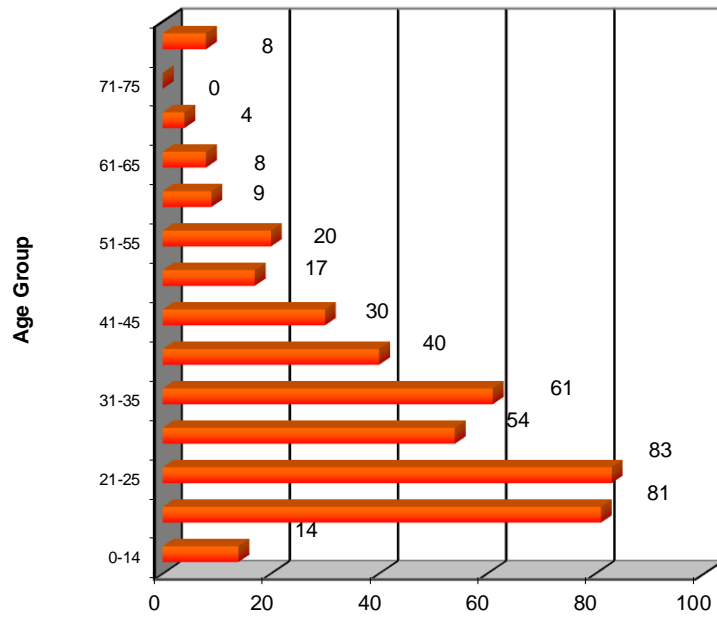
2012 Homicide Deaths Cause of Death



Homicides 5 Year Comparison 2008 - 2012

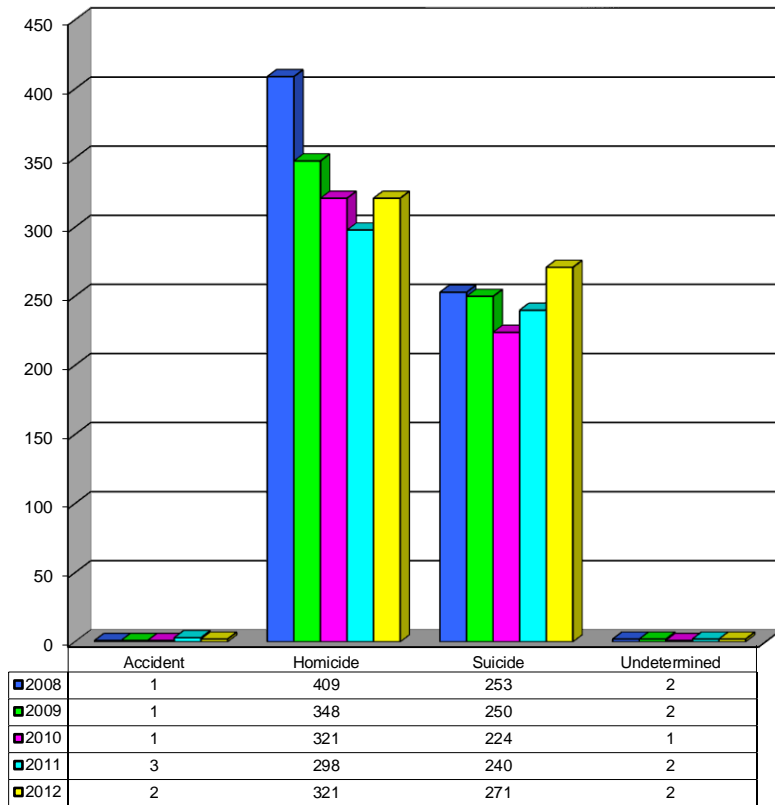


2012 Homicide Deaths by Age

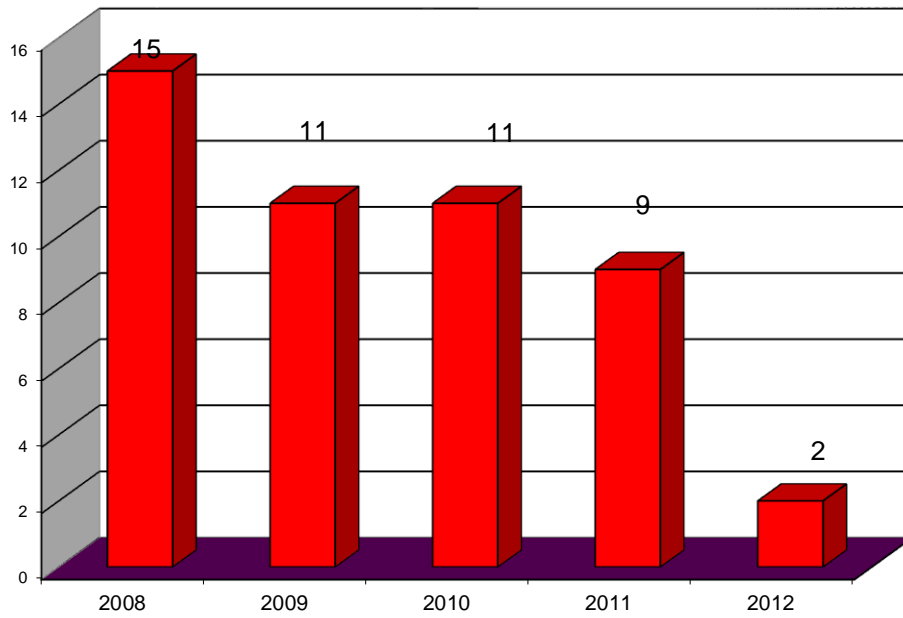


Total Deaths - 429

Firearm Deaths 2008 - 2012

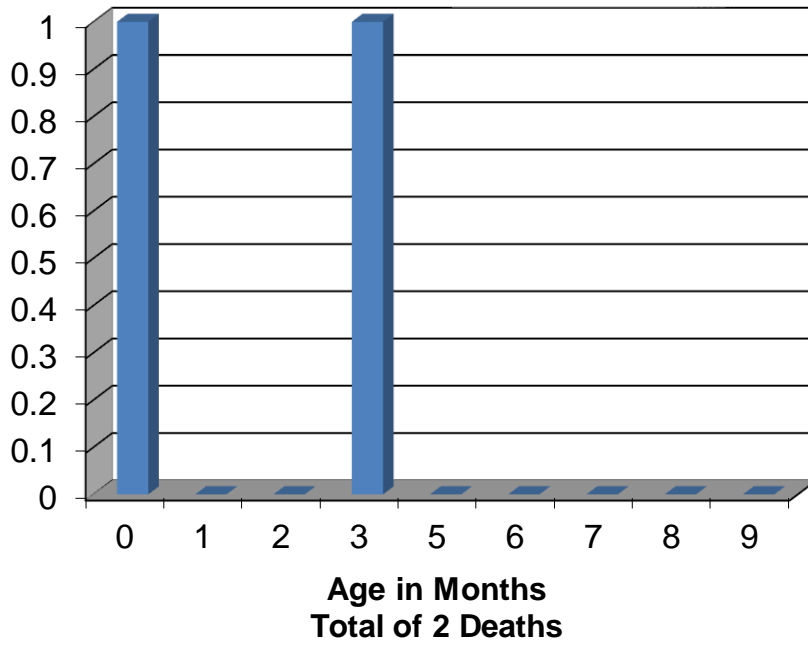


SIDS Deaths 2008 - 2012 Comparison

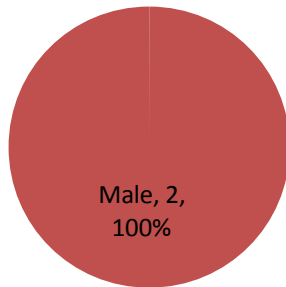


Sudden Infant Death Syndrome - 2012

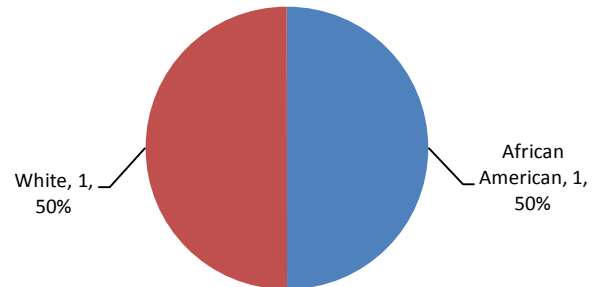
Classified by Age



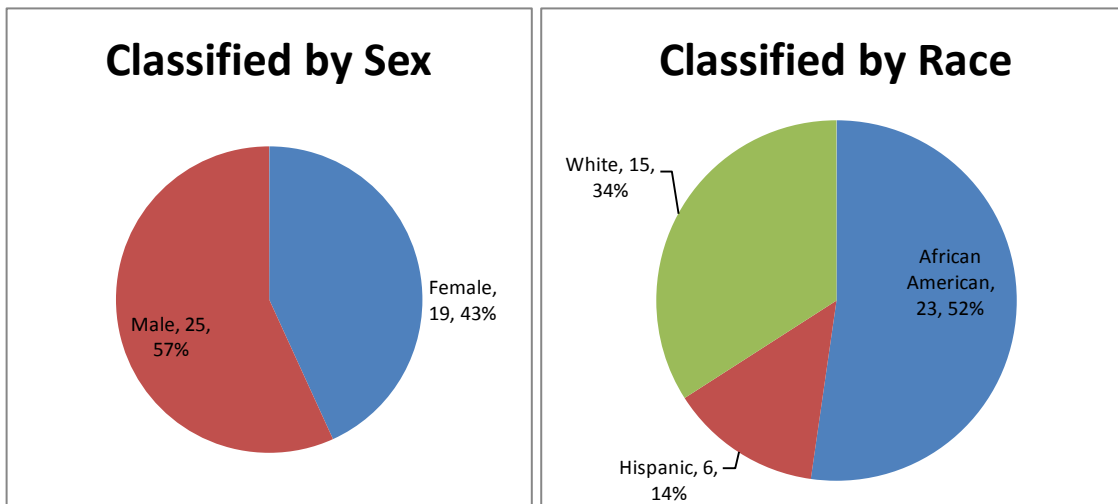
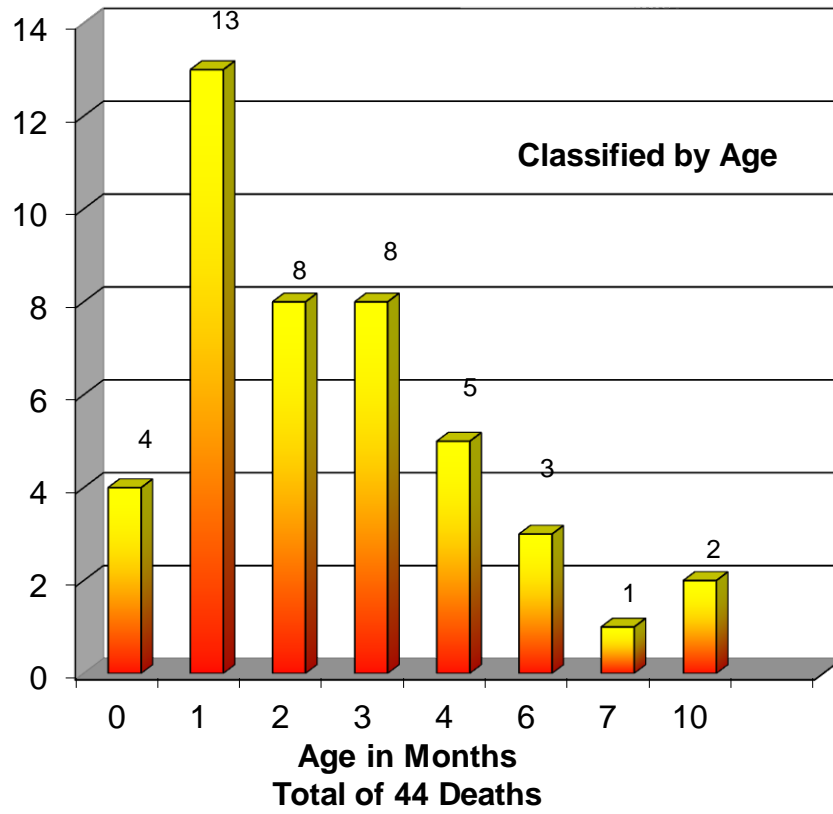
Classified by Sex



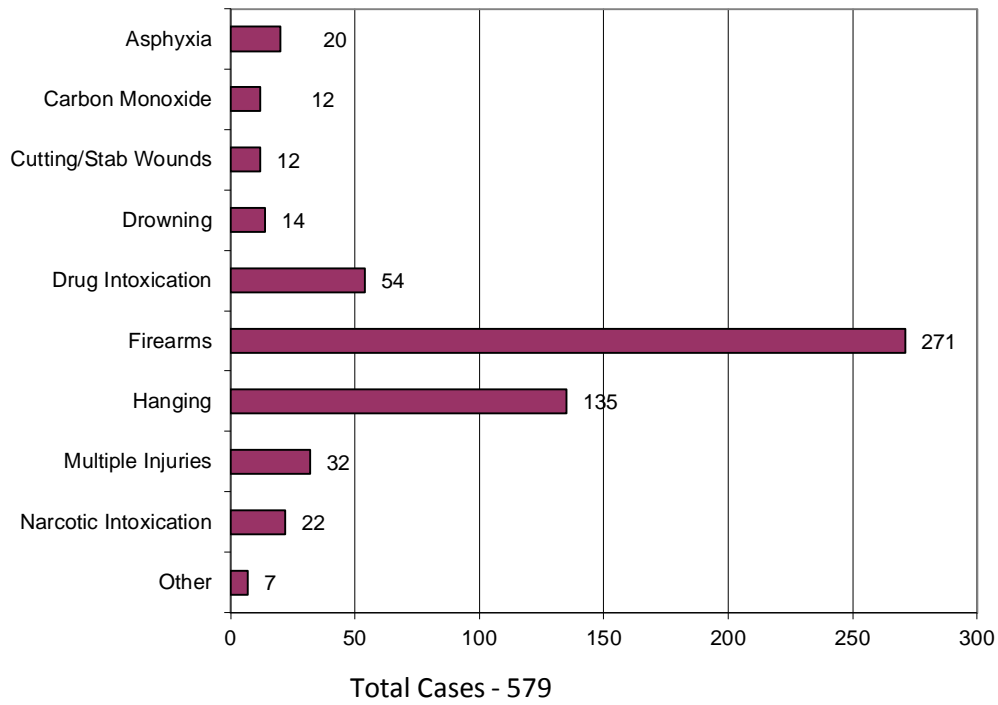
Classified by Race



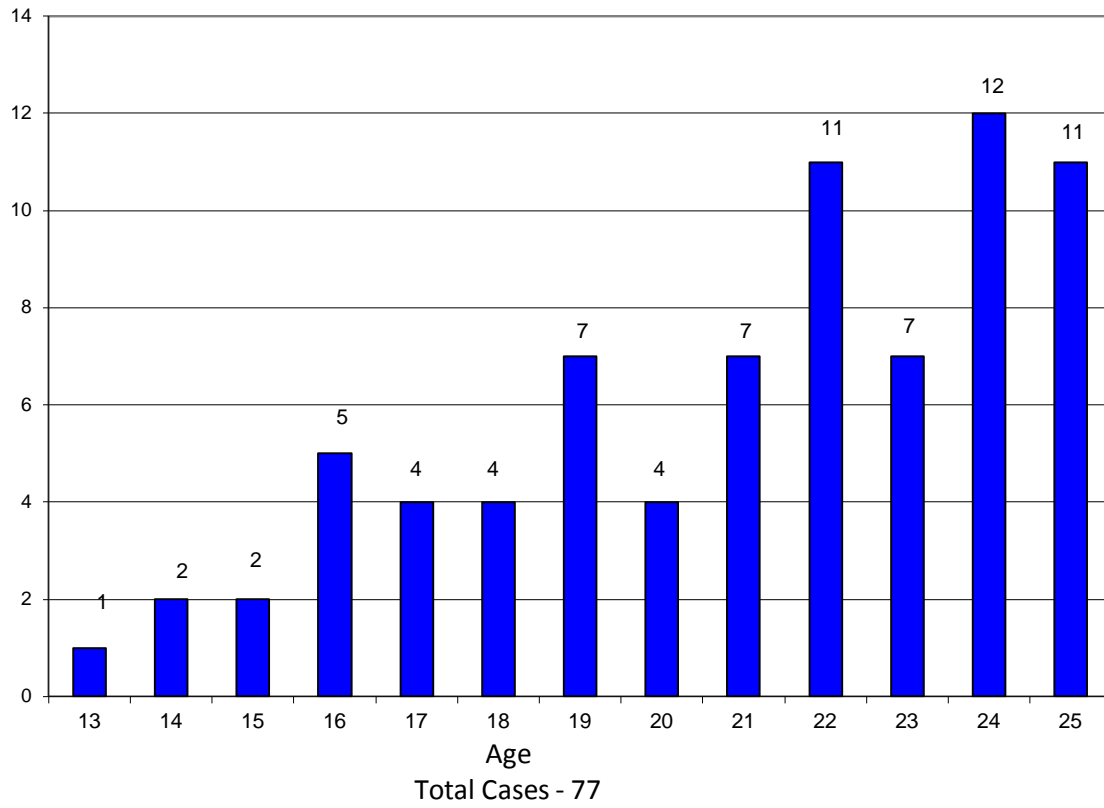
Sudden Unexplained Death in Infancy - 2012



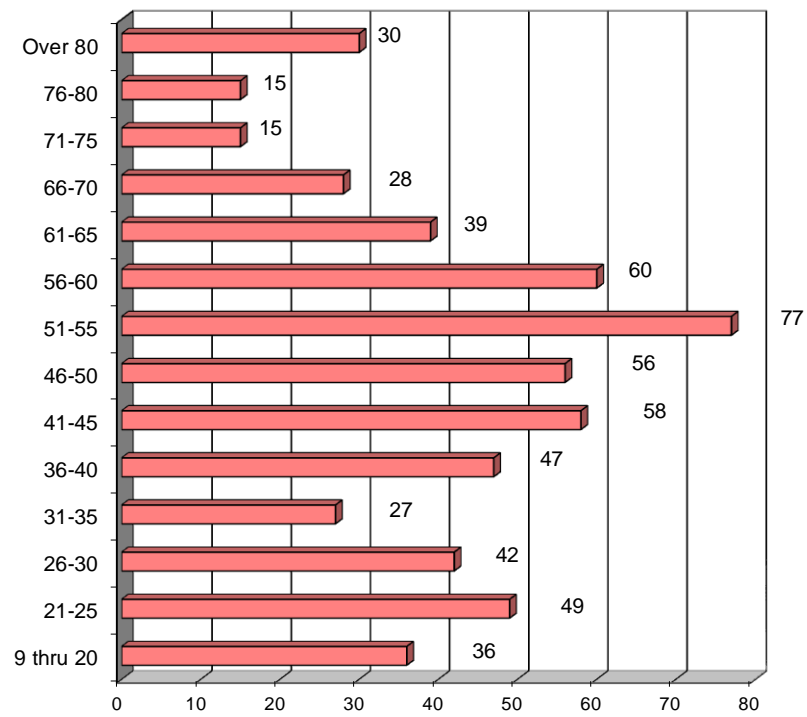
2012 Suicide Deaths Classified by Cause of Death



2012 Youth Suicides 25 Years of Age and Under

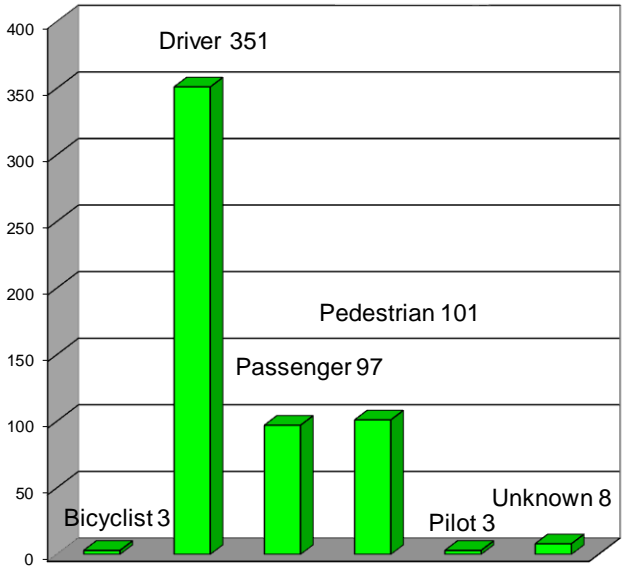


2012 Suicide Deaths by Age



Total Deaths - 579

2012 Transportation Accidents* Classified by Activity

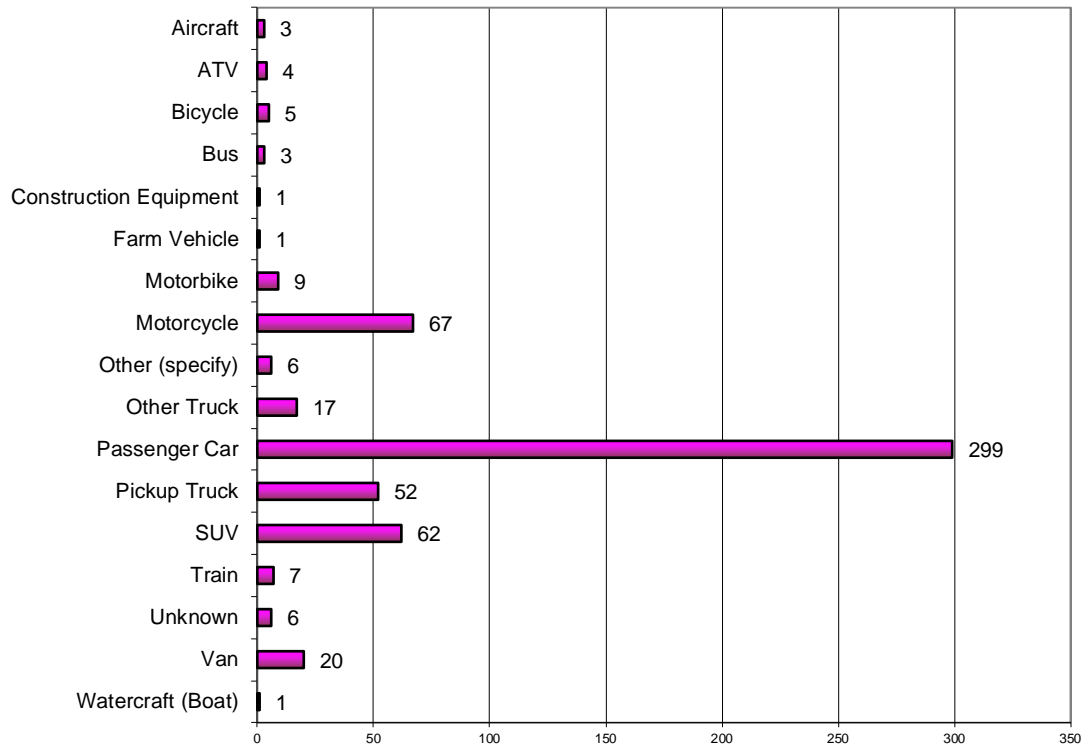


*Includes motor vehicles, boats, planes, bicycles and trains

Total Cases - 563

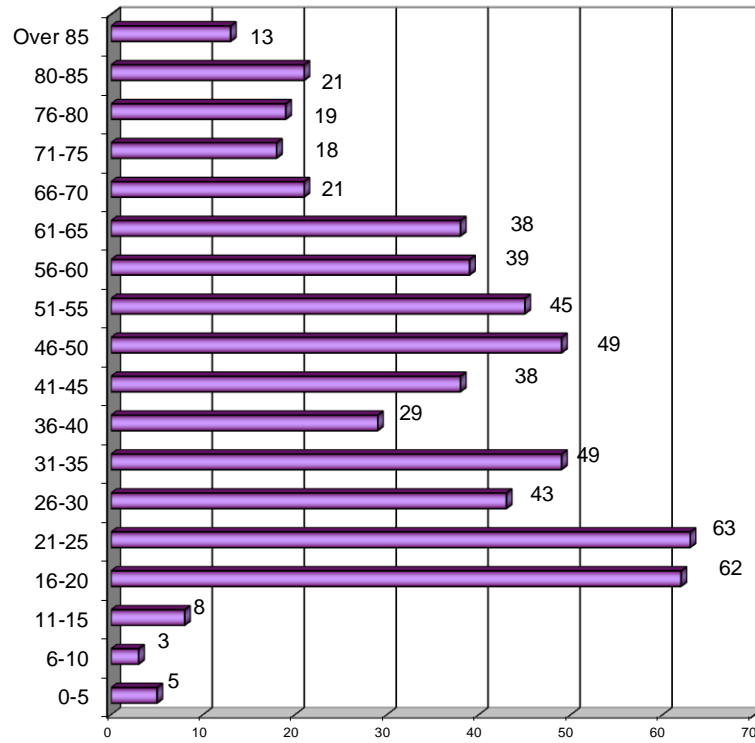
2012 Transportation Deaths

Type of Vehicle



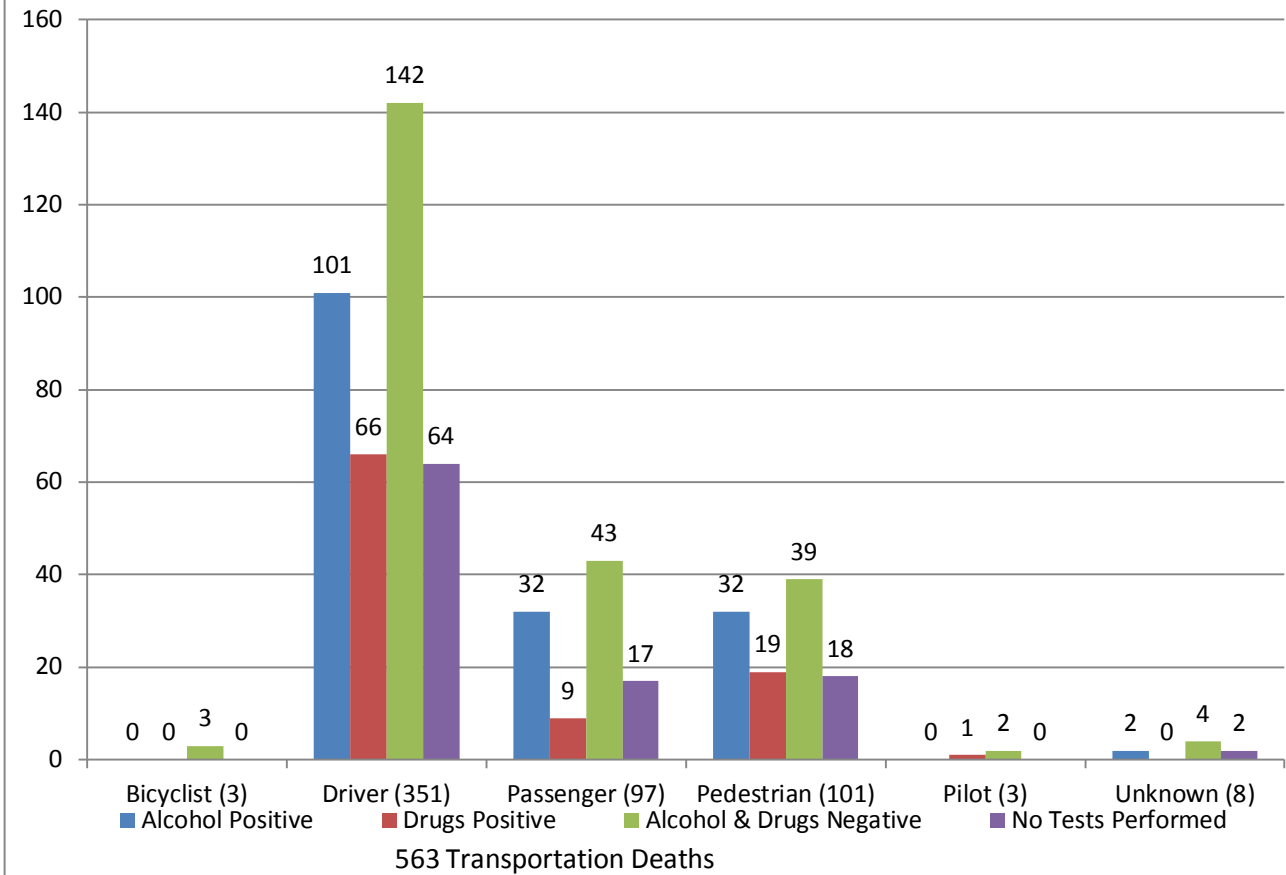
Total Cases - 563

2012 Transportation Deaths by Age



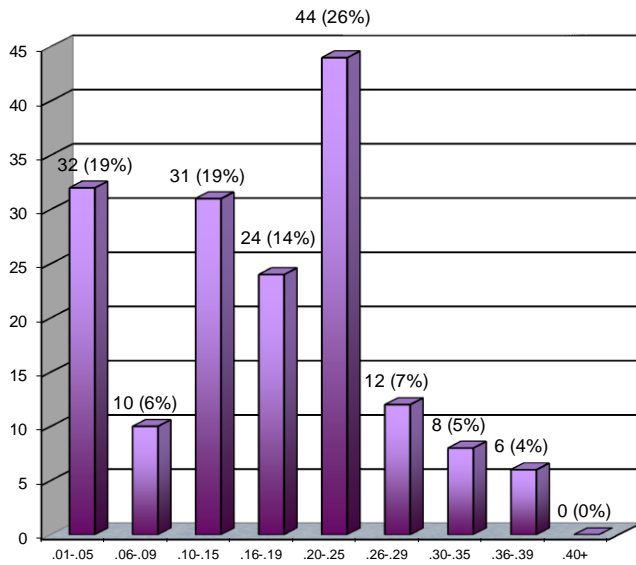
Total Cases - 563

2012 Transportation Accidents Alcohol/Drug Results



2012 Transportation Deaths

Blood Alcohol Concentration in 167 Cases 36%* Tested Positive



563 Transportation Deaths
295 Negative for Alcohol
101 No Testing Performed

*Percent based on total cases tested for alcohol

ADDENDUM

Miscellaneous Data

1. Number of autopsies 2,881
Number of partial autopsies 898
2. Organ donations 153
3. Unclaimed bodies released to State Anatomy Board 73
4. Exhumations 1
5. Bodies transported to the OCME 4,044

Revised August 1, 2014

Page 2: Undetermined was not included in the original graph. The total cases and counts remain the same, but the percentages have changed.

This revised report does not reflect any changes made to the data after the initial annual report was released.