



2014

**Annual Report
Office of the
Chief Medical Examiner**

State of Maryland

Table of Contents

Cases Reported to OCME

- Action Taken1
- Autopsied2
- Manner of Death3

Manner of Death

- Classified by Sex4
- Classified by Race4

Medical Examiner Cases

- Cause and Manner of Death5
- A Three-Year Comparison.....7
- Manner and Jurisdiction8
- Type and Jurisdiction8

Toxicologic Testing

- Percentage of Cases Positive for Alcohol and/or Drugs.....9

Drug Abuse Death

- By Jurisdiction (3-Year Comparison)10
- Undetermined Manner Only11

Homicide Deaths

- Cause of Death12
- A Five-Year Comparison.....13
- Deaths by Age.....14

Firearm Deaths

- A Five-Year Comparison.....15

Sudden Infant Death Syndrome

- A Five-Year Comparison.....16
- Classified by Age.....17
- Classified by Race and Sex17

Sudden Unexplained Death in Infancy

- Classified by Age.....18
- Classified by Race and Sex18

Suicide Death

- Cause of Death19
- Youth Suicides20
- Deaths by Age.....21

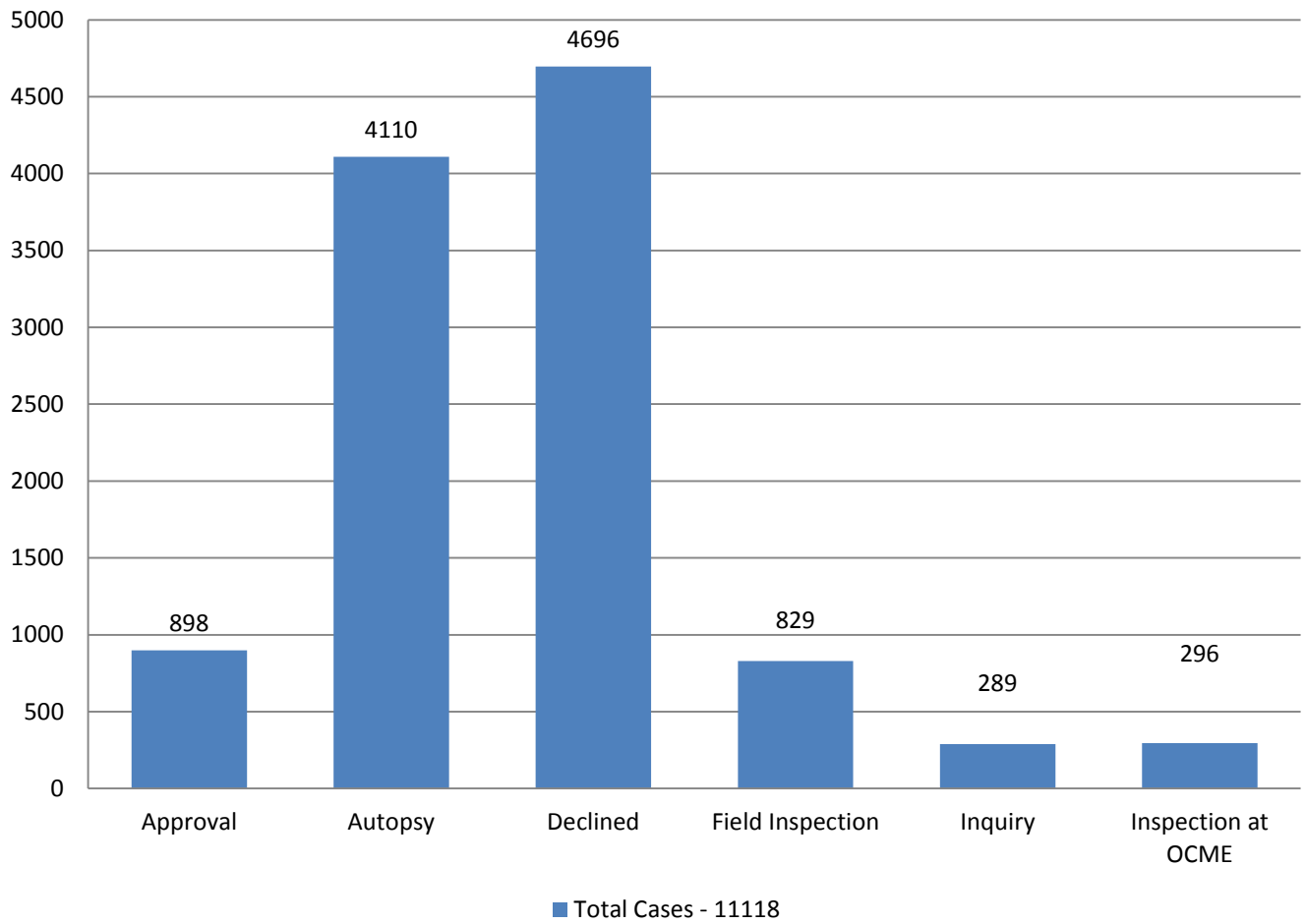
Transportation Deaths

- Classified by Activity22
- Type of Vehicle23
- Classified by Age.....24
- Alcohol/Drug Results25
- Alcohol Levels in Cases Testing Positive26

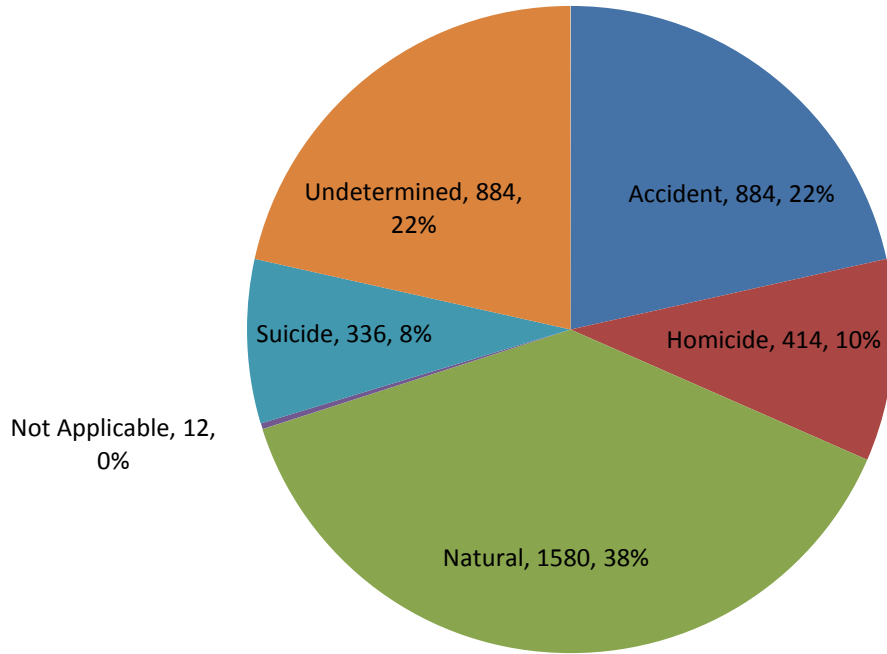
Addendum

- Miscellaneous Data27

Cases Reported to OCME - 2014 Action Taken



2014 Medical Examiner Cases Autopsied*

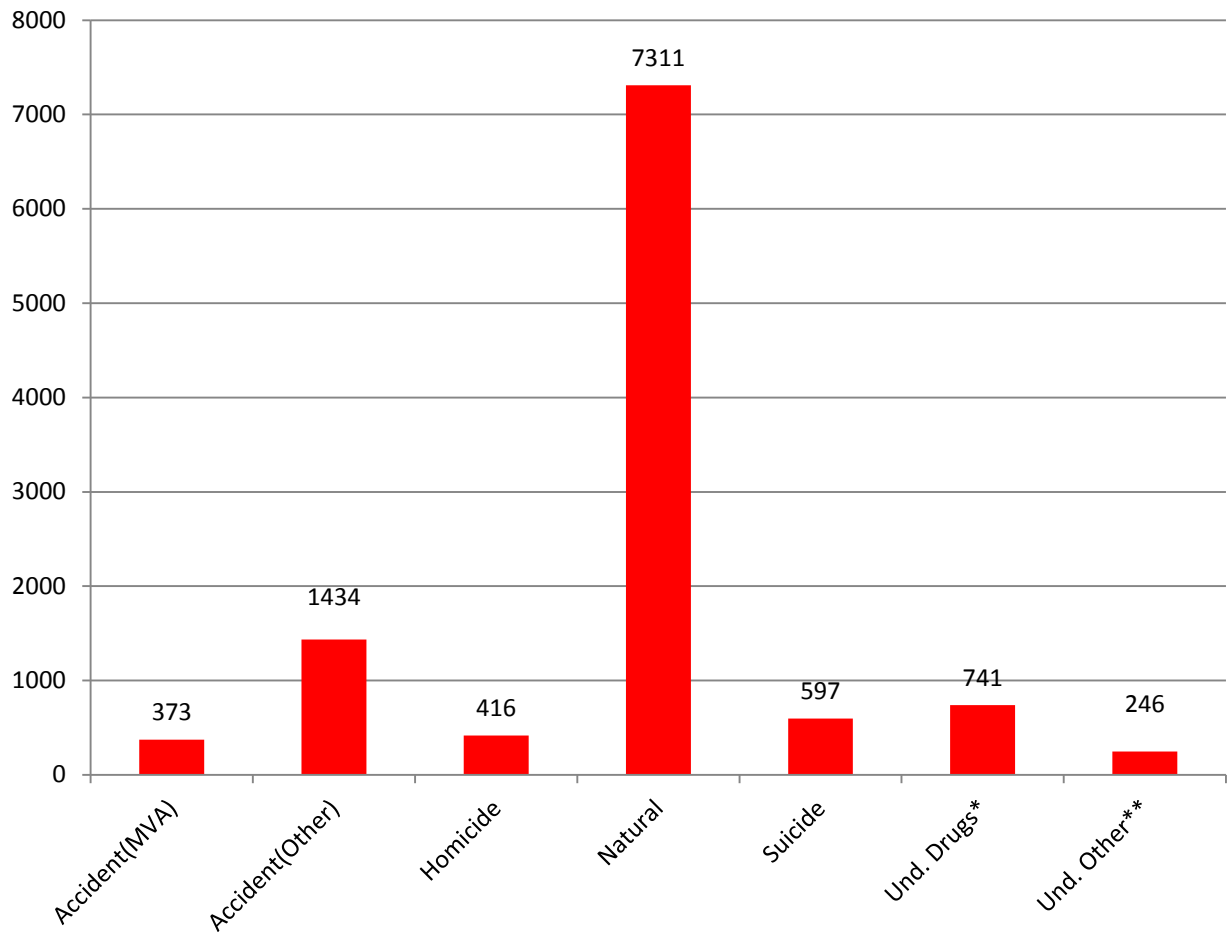


Total Cases Autopsied - 4110

*Twelve cases were classified as "not applicable" (e.g. stillborn & non-human remains).

**Two homicides were not autopsied.

2014 Cases Reported to OCME Manner of Death



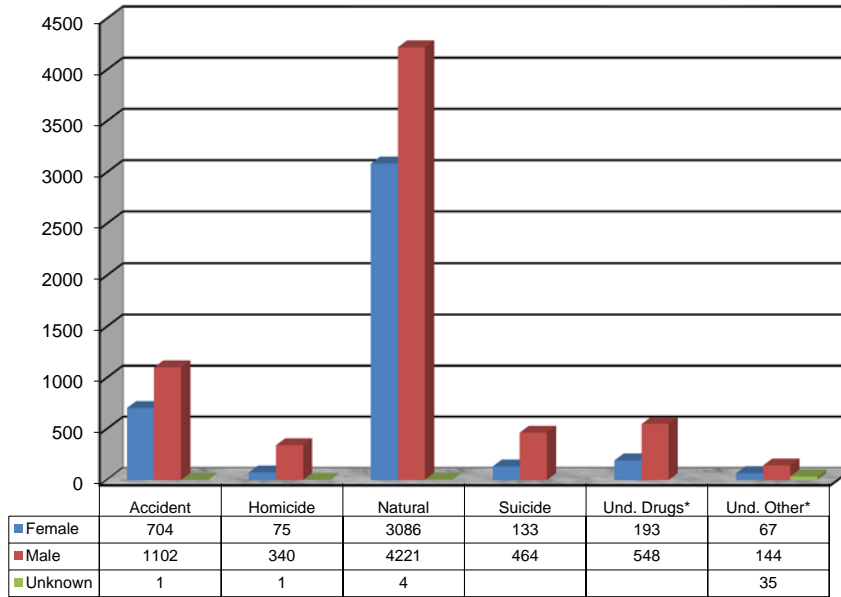
*Undetermined Manner: Drugs/Narcotics

** Undetermined Manner: Other

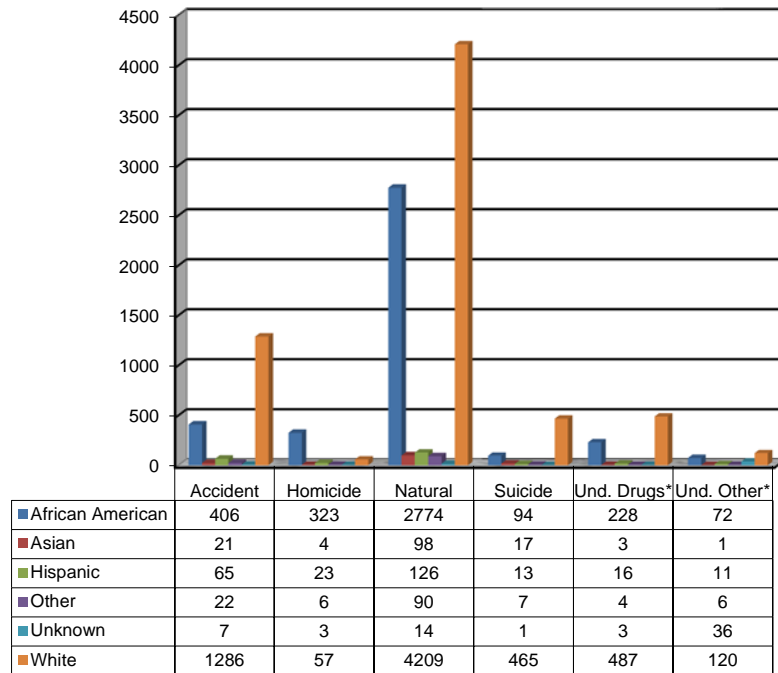
Total Cases - 11118

Manner of Death 2014

Classified by Sex



Classified by Race



*Undetermined Manner: Drugs/Narcotics

** Undetermined Manner: Other

Manner of Death

Cause of Death	Accident	Homicide	Natural	Suicide	Undeter- mined	Total
<i>Infectious disease</i>						
AIDS/HIV			12			12
Other infectious disease	26	1	117			144
<i>Malignant neoplasms (Cancer)</i>	7		362			369
<i>Endocrine and metabolic disease</i>						
Diabetes	1		69			70
Other Endocrine and metabolic	5		89		1	95
<i>Mental Disorders</i>						
Alcohol abuse	6		58		1	65
Narcotic abuse			1			1
<i>Nervous system disease</i>						
Meningitis			4			4
Seizure disorder	9		30		3	42
Other CNS	10		45		2	57
<i>Circulatory system disease</i>						
Cardiovascular disease	98	1	4455	1	12	4567
Cardiac arrhythmia	10	1	82		1	94
Cardiomyopathy	1		37			38
Pulmonary embolism	27		83		1	111
Cerebrovascular disease	86		228		5	319
Aneurysm	1		43			44
Hemorrhage	12		43	1	1	57
Other cardiac	24		273		1	298
<i>Respiratory system diseases</i>						
Respiratory distress syndrome	2		7			9
Pneumonia	25		106		1	132
Chronic obstructive pulmonary disease	3		71	1		75
Asthma	1		23			24
Other respiratory	30		97		3	130
<i>Digestive system disease</i>						
Fatty liver			2			2
Cirrhosis			40			40
Liver Disease	1		21			22
Gastrointestinal hemorrhage			55			55
Other digestive	3		40			43
<i>Congenital/Perinatal</i>		1	23		9	33
<i>Sudden Infant Death Syndrome</i>			2			2
<i>Sudden Unexplained Death in Infancy (SUDI)</i>					48	48

Manner of Death

Cause of Death	Accident	Homicide	Natural	Suicide	Undeter- mined	Total
Traumatic injury						
Head/Chest injuries	189	9	6		7	211
Multiple injuries	382	19		14	9	424
Blunt force	42	13		2	1	58
Gunshot wound	1	279		272	2	554
Sharp force/cutting		78		12		90
Fracture	130	1	4			135
Other trauma	122		20	4	3	149
Poisons						
Alcohol intoxication	30		5		6	41
Drug intoxication/abuse	27	1	6	31	51	116
Alcohol and drug intoxication	10			7	6	23
Carbon monoxide	3			12		15
Cocaine intoxication	6		3		18	27
Narcotic intoxication	107		4	19	539	669
Narcotic and alcohol intoxication	24		1	9	167	201
Asphyxiation						
Airway obstruction/Aspirated stomach content	33		31			64
Hanging	2		1	167		170
Smoke inhalation	35				3	38
Strangulation/Asphyxiation	25	5	1	22	2	55
Drowning	50			6	8	64
Hypothermia	19					19
Hyperthermia	7	1				8
Thermal Injuries (Burns)	13			1	1	15
Electrocution	2					2
Other non-natural cause	160	6		16	33	215
Other natural cause			711			711
Unknown cause					38	38
Non-human remains					4	4
TOTAL	1807	416	7311	597	987	11118

Manner of Death - 3 Year Comparison

Medical Examiner Cases*: Manner of Death, Maryland 2014

Manner of Death	Number	%
Accident	1807	16.3%
Homicide	416	3.7%
Natural	7311	65.8%
Suicide	597	5.4%
Undetermined	987	8.9%
Total	11118	100%

Medical Examiner Cases: Manner of Death, Maryland 2013

Manner of Death	Number	%
Accident	1826	17.0%
Homicide	434	4.0%
Natural	7133	66.3%
Suicide	576	5.4%
Undetermined	782	7.3%
Total	10751	100%

Medical Examiner Cases: Manner of Death, Maryland 2012

Manner of Death	Number	%
Accident	1859	18.6%
Homicide	429	4.3%
Natural	6362	63.6%
Suicide	579	5.8%
Undetermined	775	7.7%
Total	10004	100%

2014 Manner and Jurisdiction

2014 - Manner	Accident	Homicide	Natural	Suicide	Undetermined	Total
Allegany	40	2	136	9	15	202
Anne Arundel	122	15	728	68	83	1016
Baltimore City	453	228	2151	86	305	3223
Baltimore County	261	24	684	84	147	1200
Calvert	14		88	14	16	132
Caroline	16		16	4	5	41
Carroll	49	3	215	29	28	324
Cecil	30	4	86	16	22	158
Charles	19	3	78	18	18	136
Dorchester	10	3	22	6	2	43
Frederick	57	3	103	18	44	225
Garrett	8		33	2	1	44
Harford	56	8	283	28	40	415
Howard	51	5	141	24	20	241
Kent	10		28	1	3	42
Montgomery	207	20	724	71	62	1084
Out-Of-State		1	1		1	3
Prince George's	203	81	1082	53	69	1488
Queen Anne's	12		25	7	11	55
Saint Mary's	17	2	75	12	9	115
Somerset	5	1	40	3	2	51
Talbot	10		31	5	6	52
Washington	70	6	124	22	39	261
Wicomico	56	5	291	14	21	387
Worcester	31	2	126	3	18	180
Total	1807	416	7311	597	987	11118

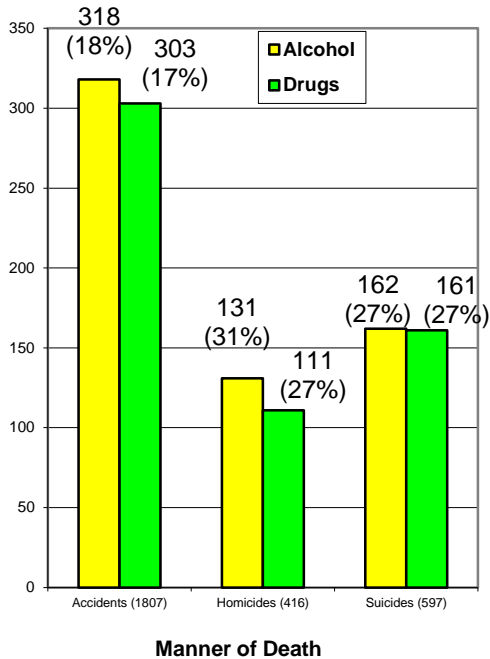
2014 Case Type and Jurisdiction

2014 - Case Type	Approval	Autopsy	Declined	Inquiry	OCME Inspection	Scene Inspection	Total
Allegany	23	74	82	1	3	19	202
Anne Arundel	45	350	475	40	29	77	1016
Baltimore City	290	1111	1518	101	78	125	3223
Baltimore County	158	501	357	38	43	102	1199
Calvert		54					54
Calvert	2		58	2	9	7	78
Caroline	1	28	5	1	1	5	41
Carroll	18	118	135	8	15	30	324
Cecil	4	97	32	2	8	15	158
Charles	3	76	22	4	7	24	136
Dorchester	1	27	7	1	1	6	43
Frederick	25	123	48	1	6	22	225
Garrett	5	17	14		1	7	44
Harford	29	132	207	7	9	31	415
Howard	33	103	60	10	6	29	241
Kent	4	16	17		1	4	42
Montgomery	117	352	475	25	23	92	1084
Out-Of-State		1	2				3
Prince George's	64	481	769	26	26	122	1488
Queen Anne's	1	34	13	2	2	3	55
Saint Mary's	4	59	24	4	3	21	115
Somerset	2	20	16	1		12	51
Talbot	3	23	15	5	3	3	52
Unknown			1				1
Washington	29	138	57	3	11	23	261
Wicomico	30	108	208	5	7	29	387
Worcester	7	67	79	2	4	21	180
Grand Total	898	4110	4696	289	296	829	11118

2014 Toxicology Testing

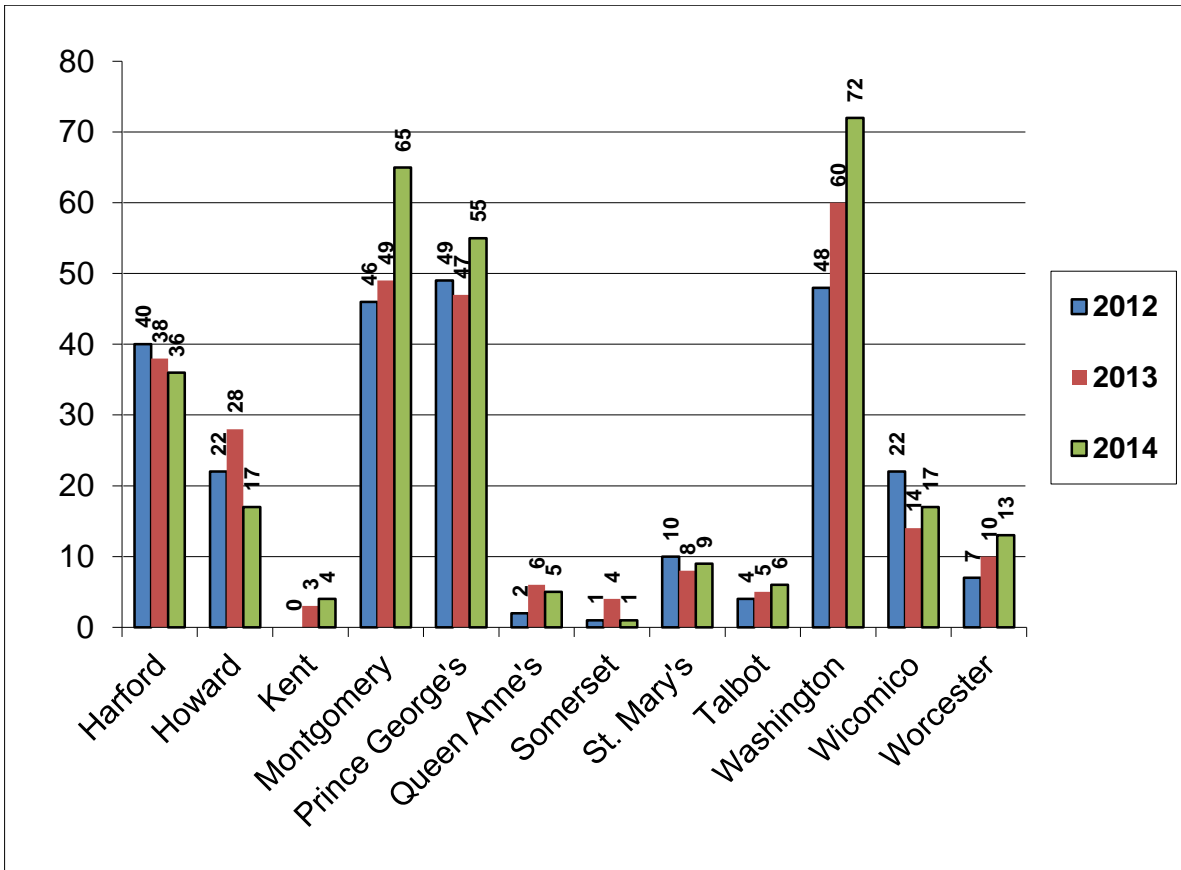
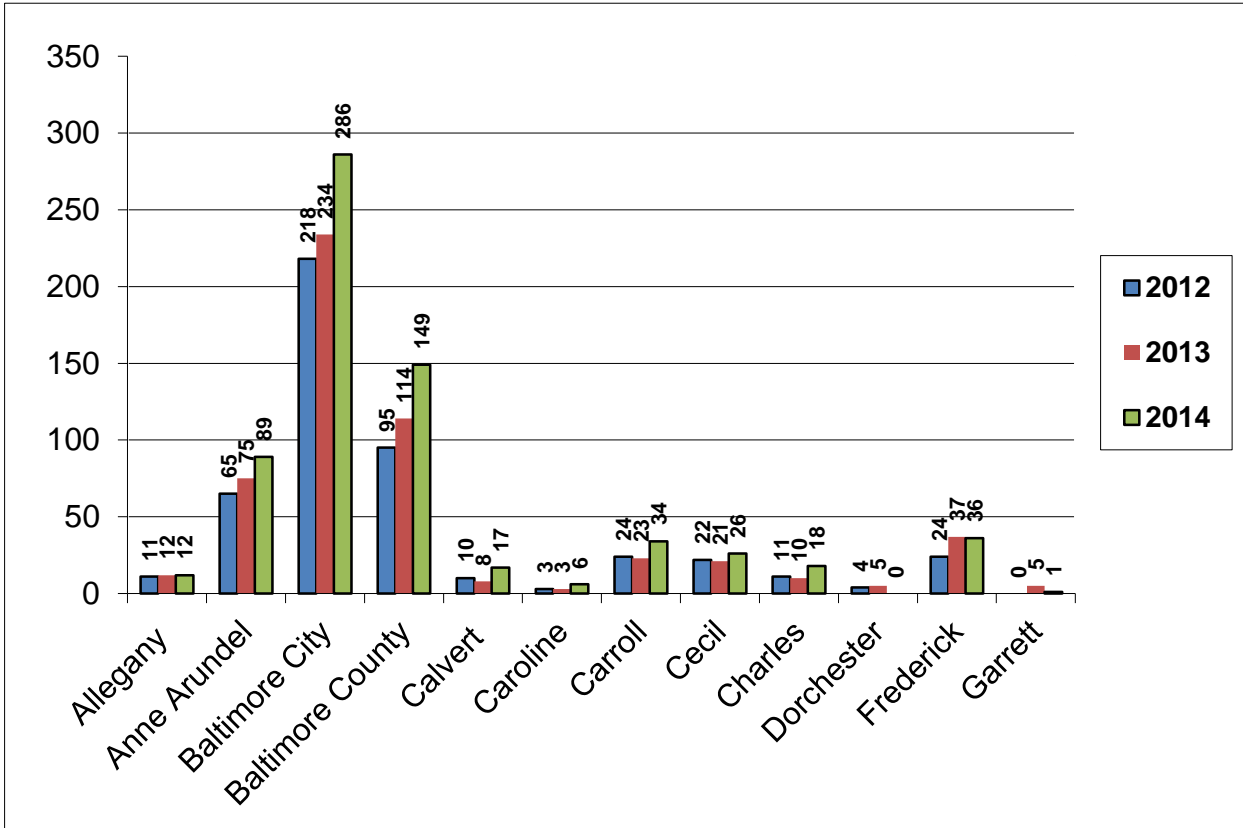
of Cases Positive for Alcohol and/or Drugs*
(Percentage of the Manner of Death)

*Drugs include heroin, morphine, cocaine, methadone and phencyclidine.

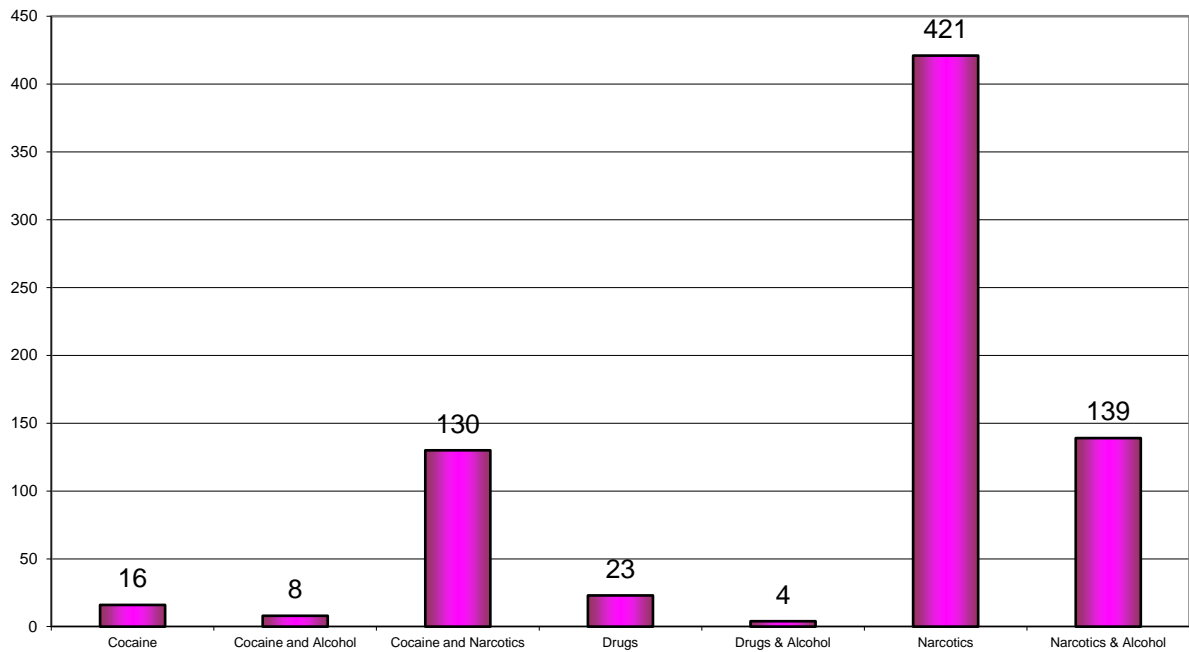


*Abused Drugs include Alprazolam, Amphetamine, Benzoylcegonine, Brompheniramine, Chlorpheniramine, Cocaine, Codeine, Diazepam, Diphenhydramine, Doxylamine, Fentanyl, Heroin, Hydrocodone, Hydroxyzine, Meperidine, Methadone, Methamphetamine, Methylenedioxyamphetamine, Methylenedioxymethamphetamine, Morphine, Nordiazepam, Normeperidine, Oxycodone, Phencyclidine, Propoxyphene, Tramadol, and Zolpidem. This list used in previous years was only Cocaine, Heroin, Methadone, Morphine and Phencyclidine.

Drug Abuse Deaths 3 Year Comparison by Jurisdiction 2012-2014



2014 Drug Abuse Deaths Undetermined Manner



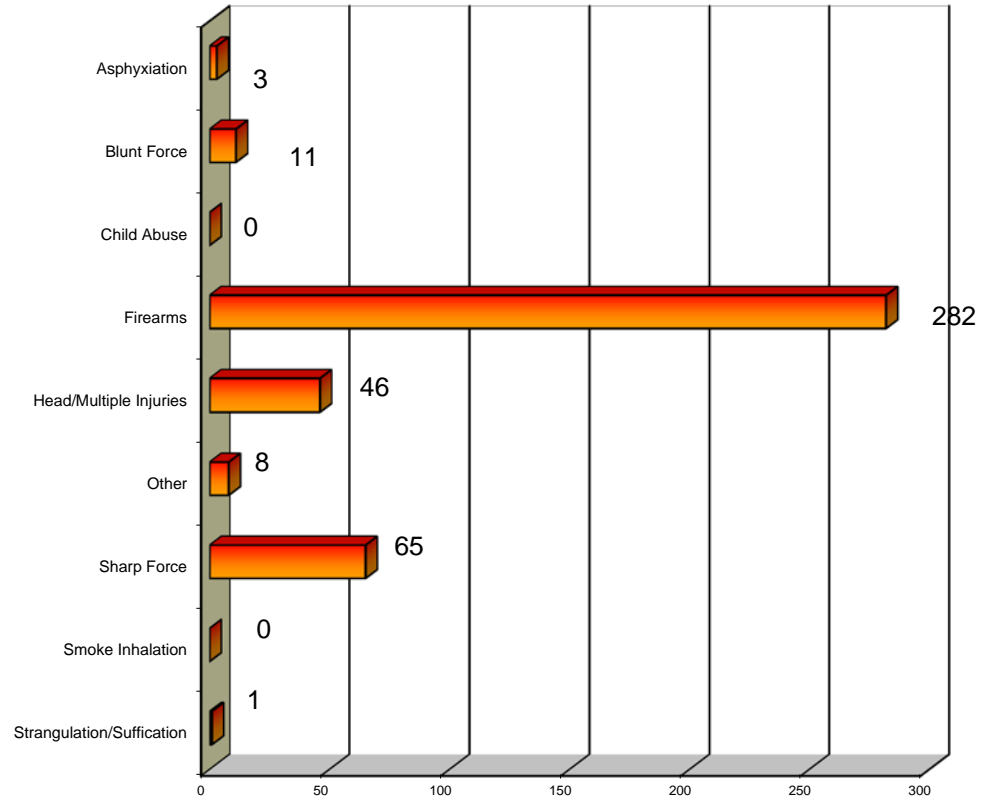
Total Cases - 741

Cocaine Tests: Benzoyllecgonine and Cocaine

Drug Tests: Alprazolam, Amphetamine, Brompheniramine, Chlorpheniramine, Diazepam, Diphenhydramine, Doxylamine, Hydroxyzine, Methamphetamine, Methylenedioxyamphetamine, Methylenedioxymethamphetamine, Nordiazepam, Phencyclidine, Propoxyphene and Zolpidem

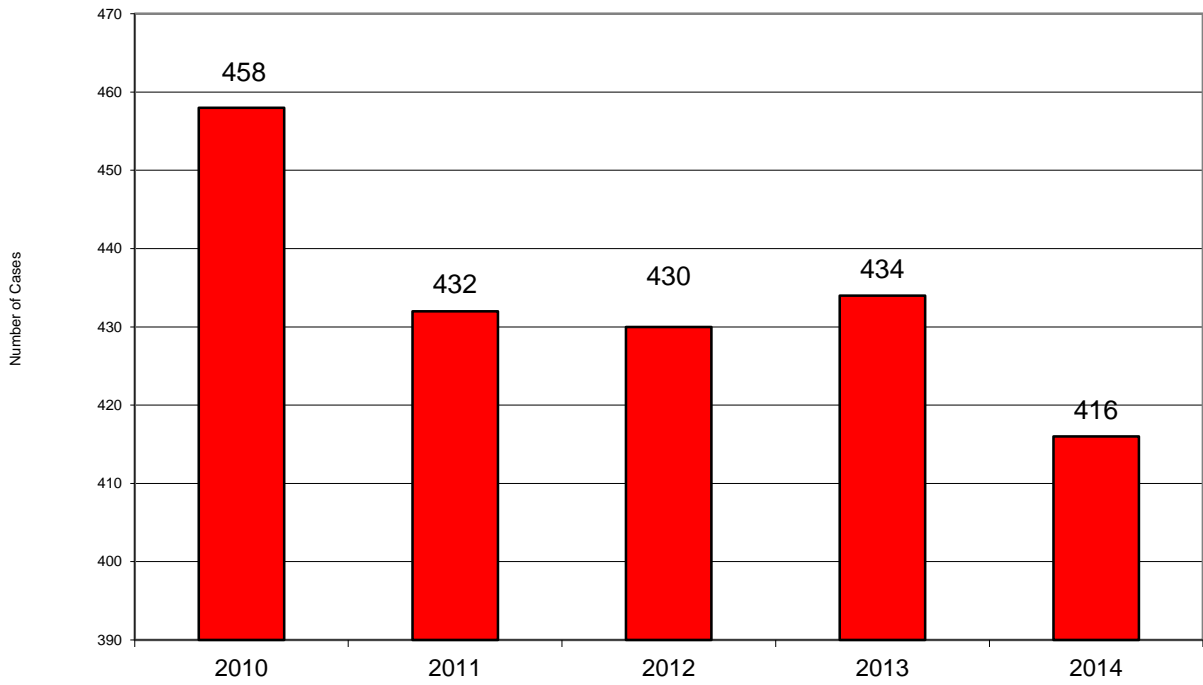
Narcotic Tests: Codeine, Fentanyl, Heroin, Hydrocodone, Meperidine, Methadone, Morphine, Normeperidine, Oxycodone and Tramadol

2014 Homicide Deaths Cause of Death



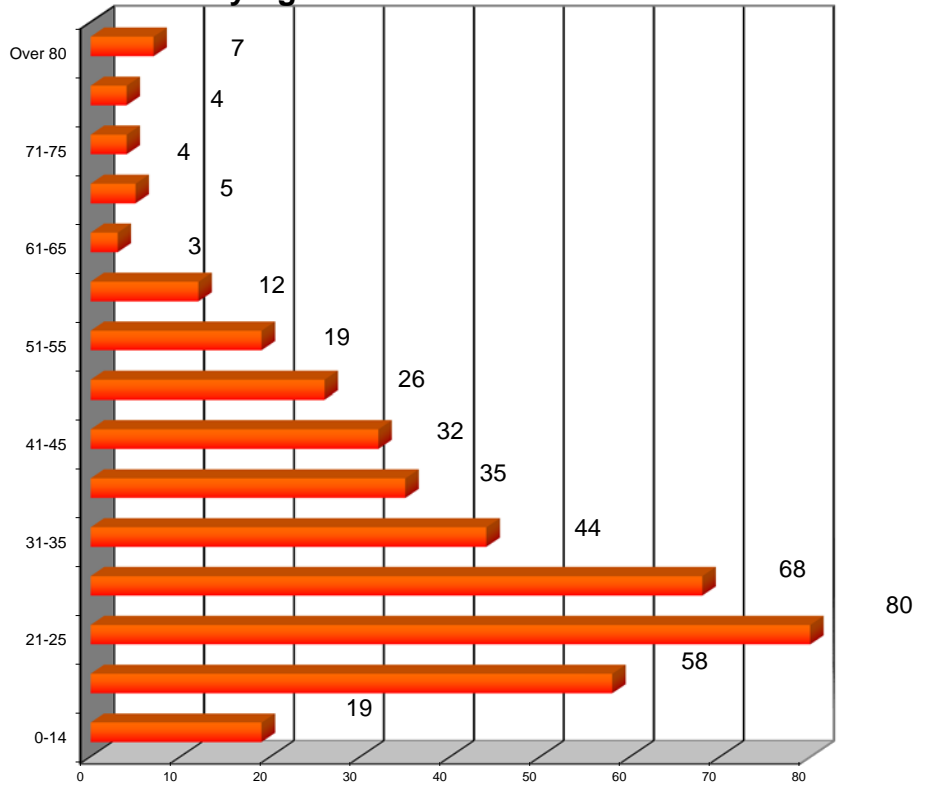
Total Deaths - 416

Homicides 5 Year Comparison 2010 - 2014



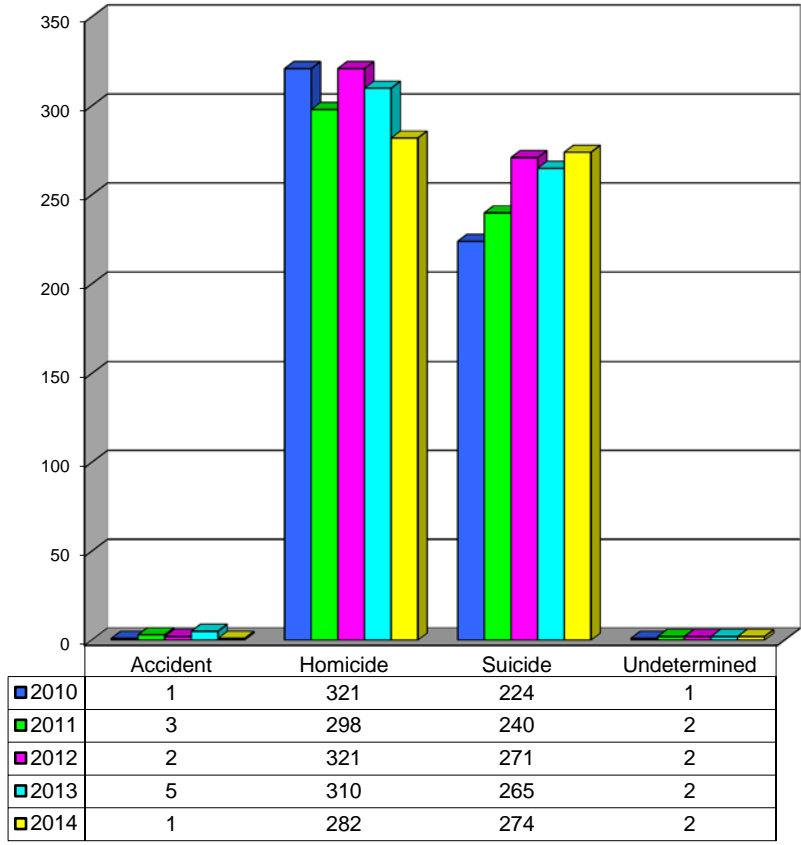
2014 Homicide Deaths by Age

Age Group

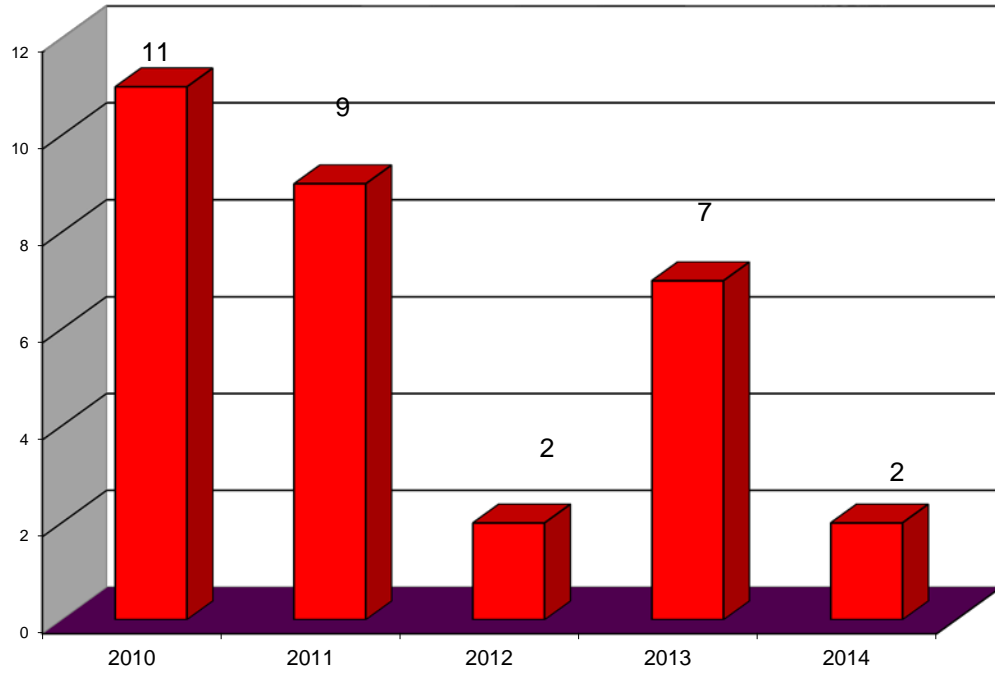


Total Deaths - 416

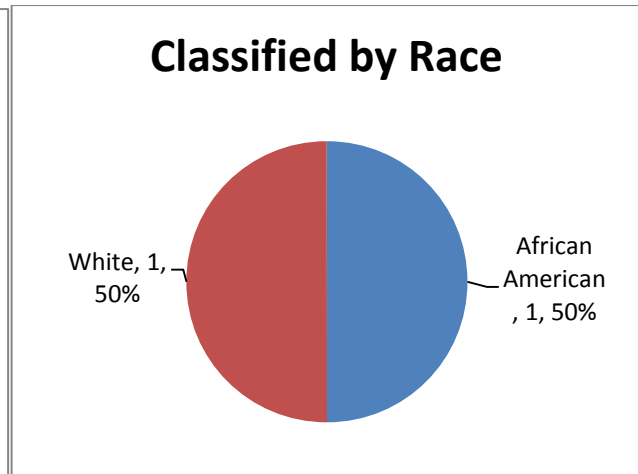
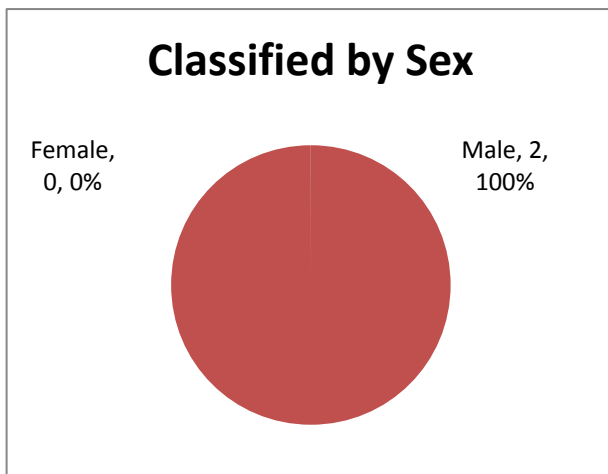
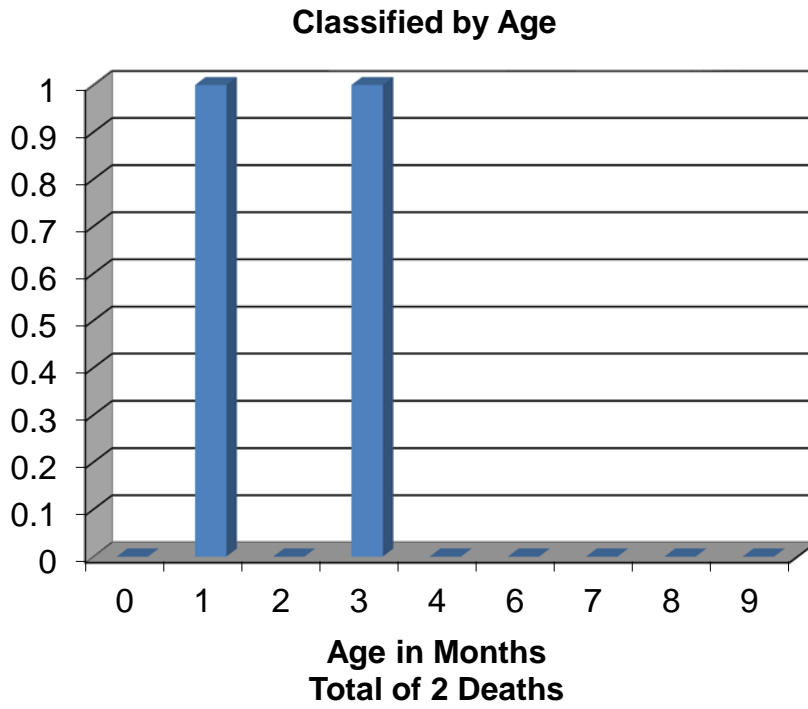
Firearm Deaths 2010 - 2014



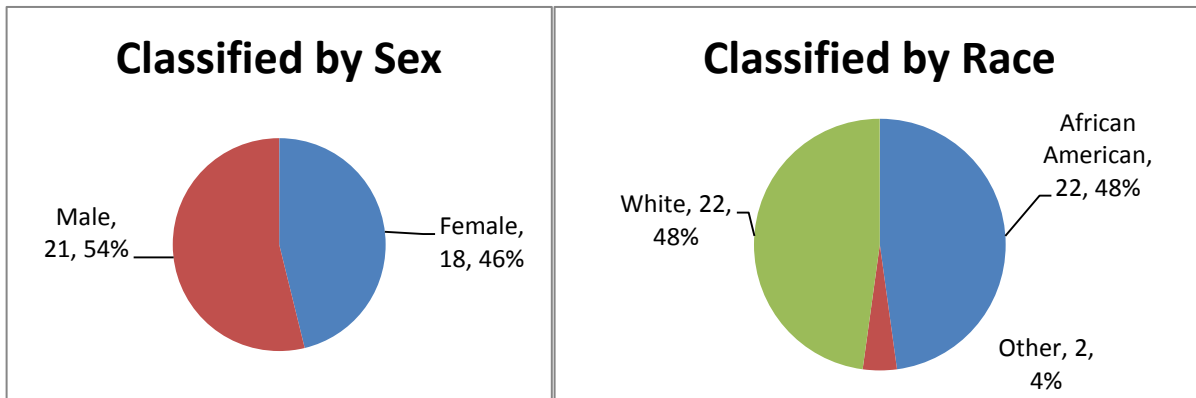
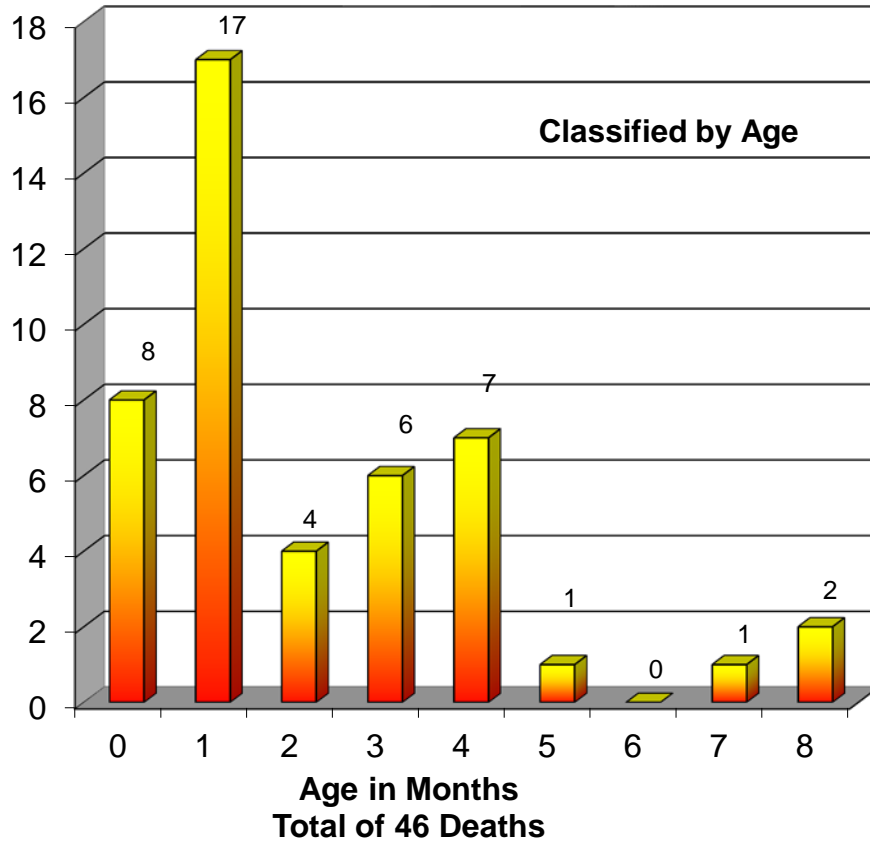
SIDS Deaths 2010 - 2014 Comparison



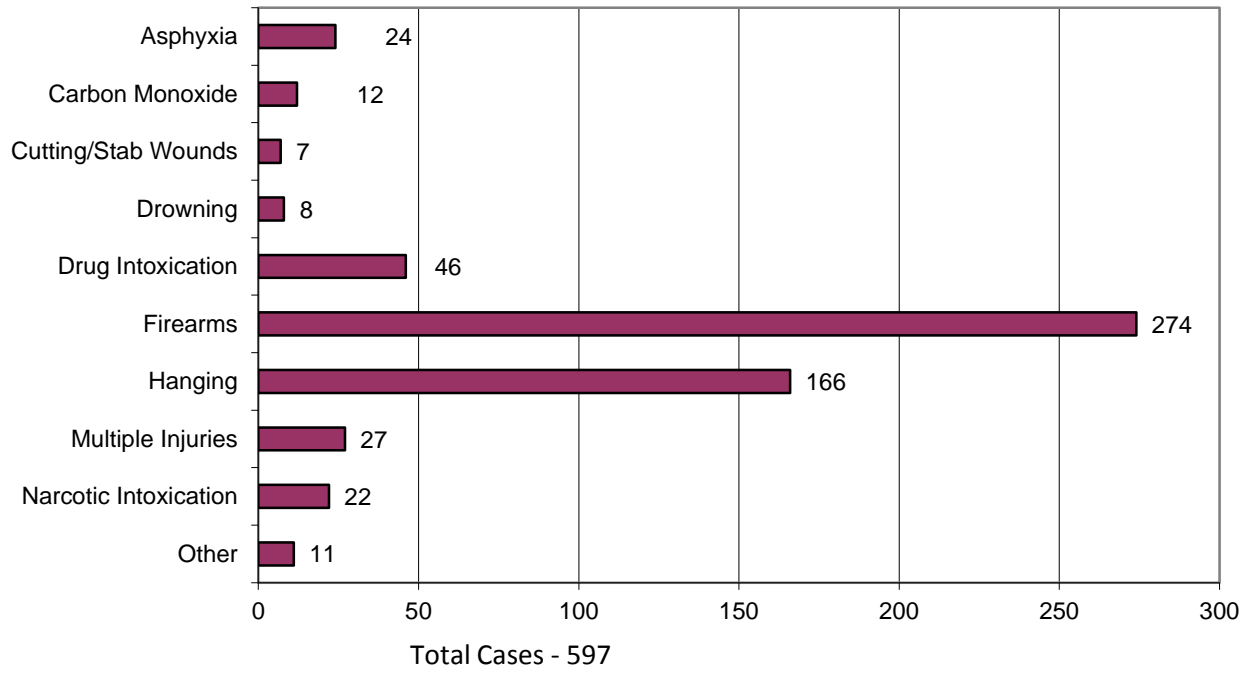
Sudden Infant Death Syndrome - 2014



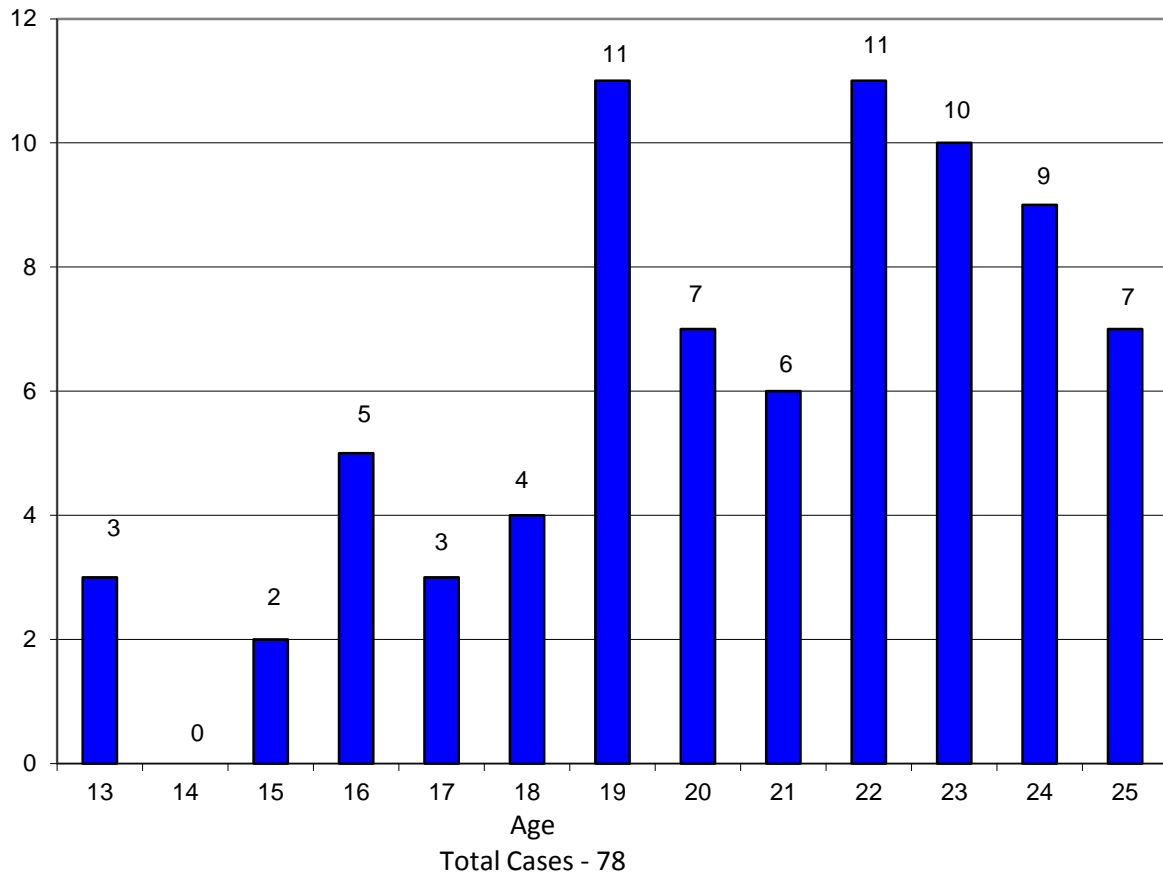
Sudden Unexplained Death in Infancy - 2014



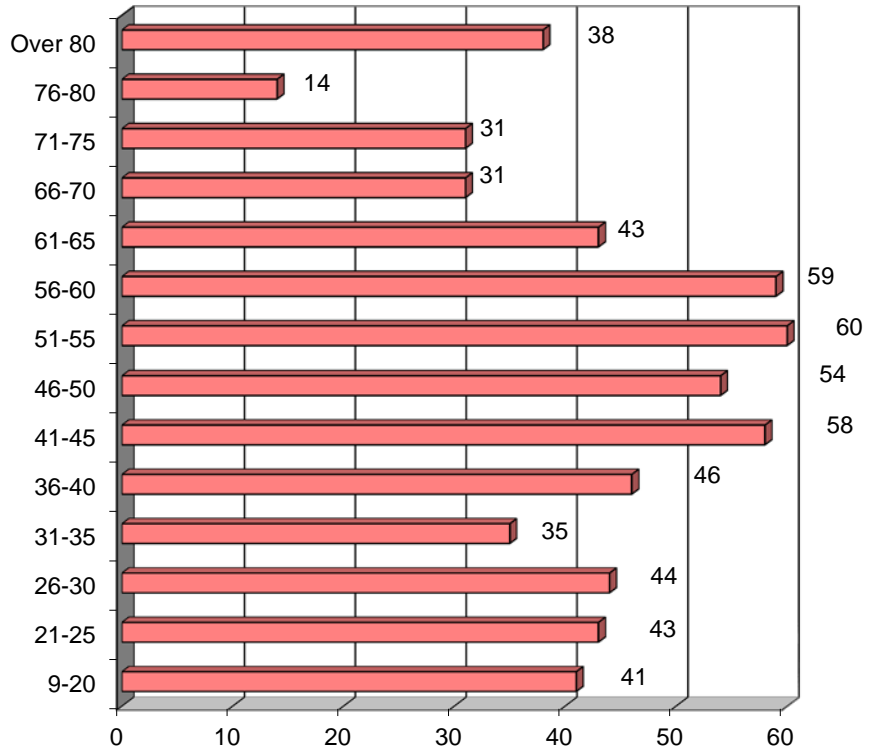
2014 Suicide Deaths Classified by Cause of Death



**2014 Youth Suicides
25 Years of Age and Under**

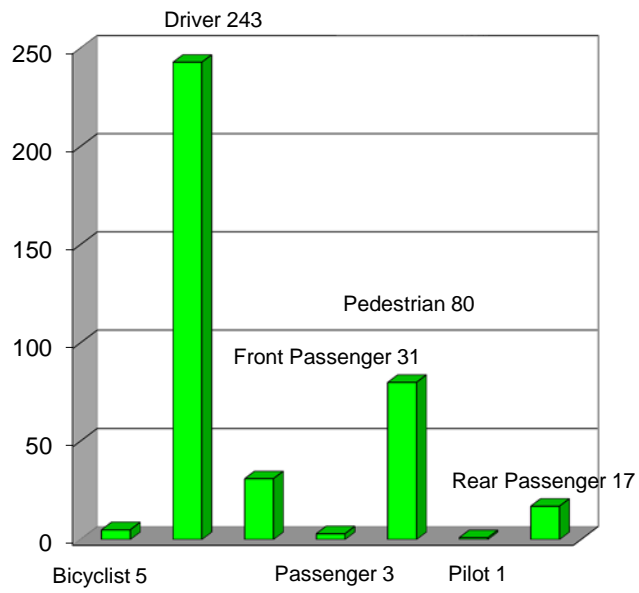


2014 Suicide Deaths by Age



Total Deaths - 597

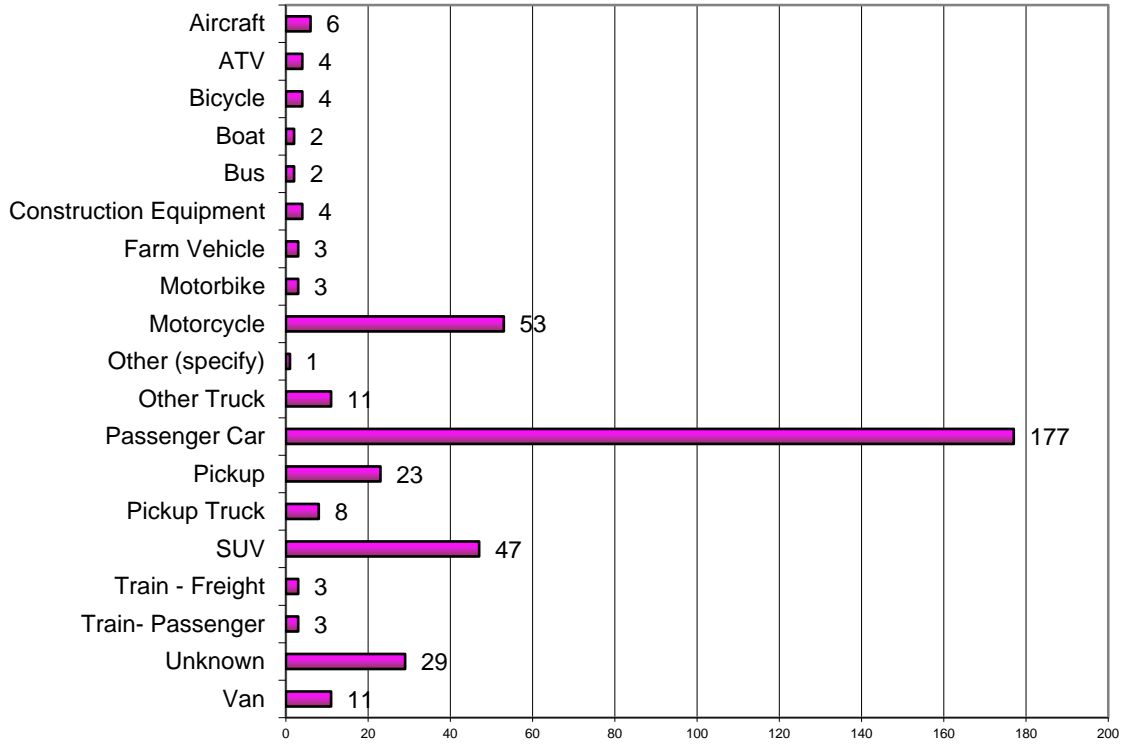
2014 Transportation Accidents* Classified by Activity



*Includes motor vehicles, boats, planes, bicycles and trains

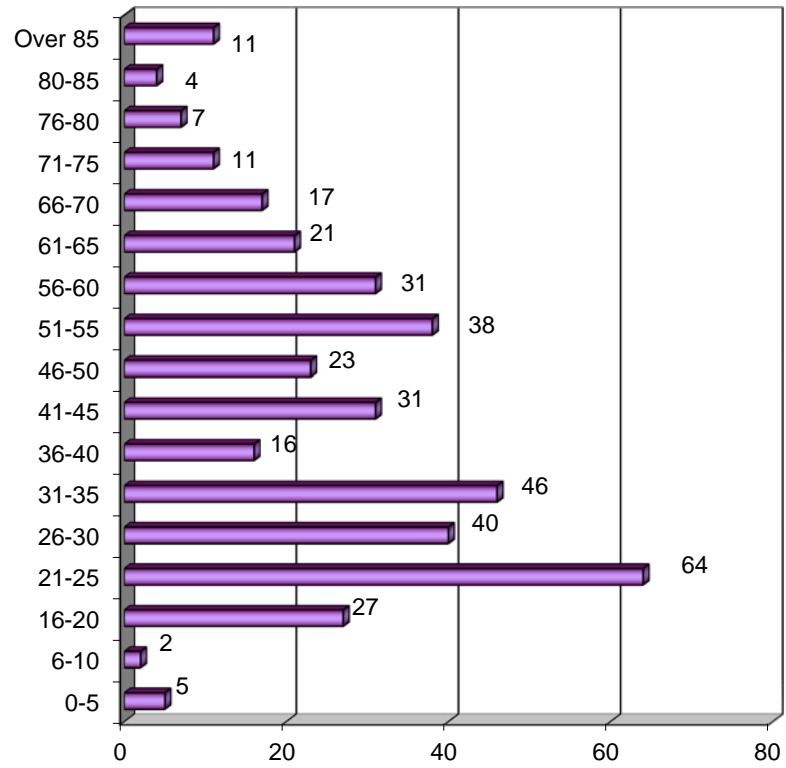
Total Cases - 394

2014 Transportation Deaths Type of Vehicle



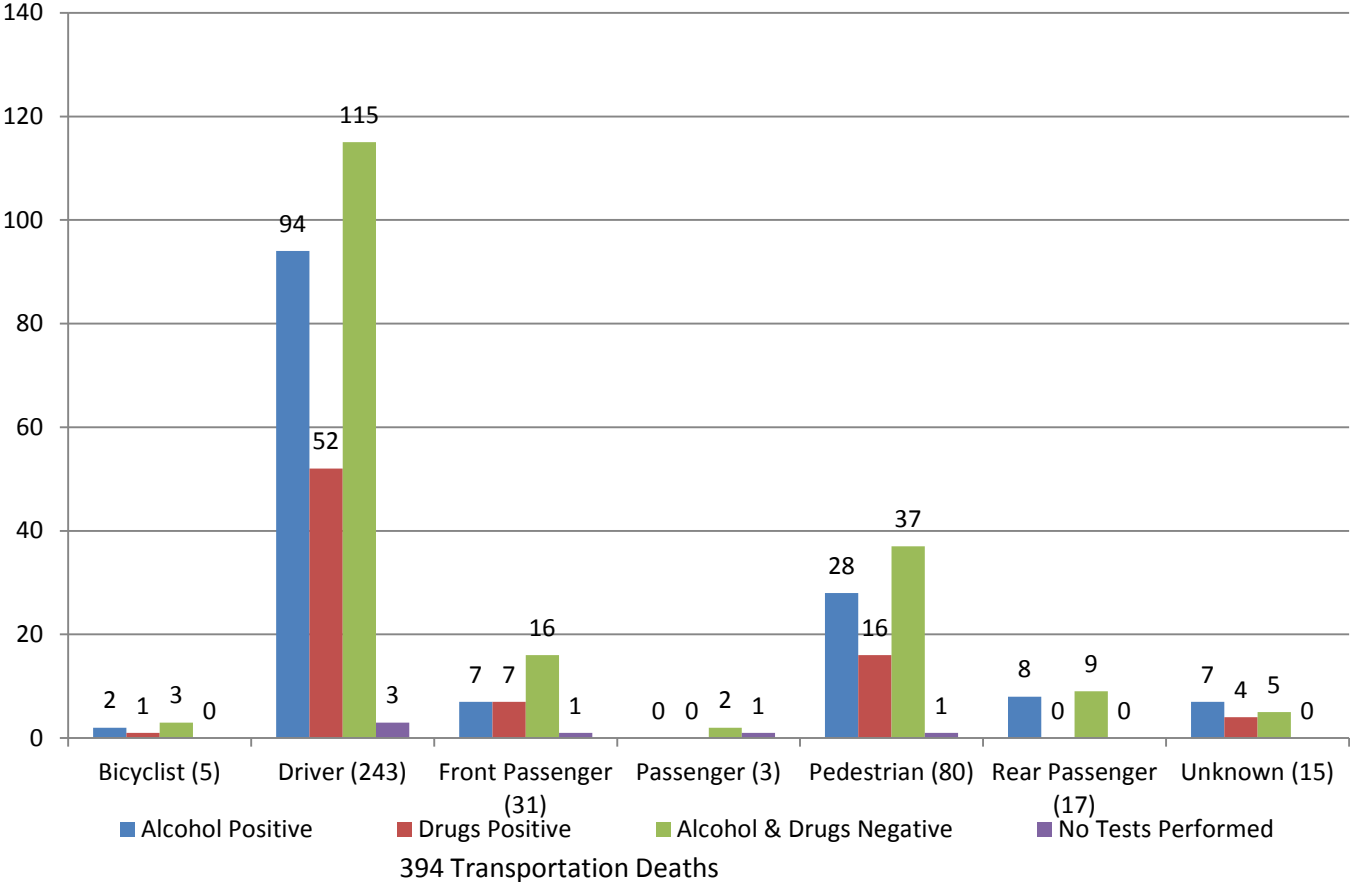
Total Cases - 394

2014 Transportation Deaths by Age

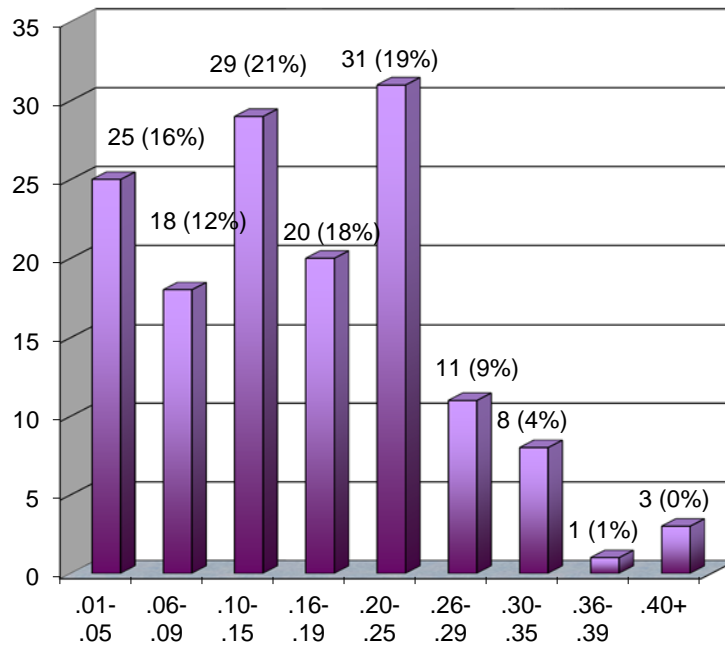


Total Cases - 394

2014 Transportation Accidents Alcohol/Drug Results



**2014 Transportation Deaths
Blood Alcohol Concentration in 146 Cases
38%* Tested Positive**



394 Transportation Deaths
242 Negative for Alcohol
6 No Testing Performed

*Percent based on total cases tested for alcohol

ADDENDUM

Miscellaneous Data

1. Number of autopsies 3,091
Number of partial autopsies 1,015
2. Organ donations 82
3. Unclaimed bodies released to State Anatomy Board 202
4. Exhumations 0
5. Bodies transported to the OCME 4,396