



COVID-19 Daily Update

Maryland Department of Health
Maryland Primary Care Program
Program Management Office

April 6, 2020

The Crisis



We Will Get Through This

CME Accreditation and Designation

- ❖ This activity has been planned and implemented in accordance with the Essential Areas and policies of the Accreditation Council for Continuing Medical Education (ACCME) through the joint providership of MedChi, The Maryland State Medical Society, and The Maryland Department of Health. MedChi is accredited by the ACCME to provide continuing medical education for physicians.
- ❖ MedChi designates this live webinar educational activity for a maximum of 1 AMA PRA Category 1 Credits™. Physicians should claim only the credit commensurate with the extent of their participation in the activity. Contact Frank Berry at fberry@medchi.org

Key Takeaways

- ❖ You remain on the front line against COVID-19 in Maryland
- ❖ This epidemic affects **EVERYONE**, including many of your patients
- ❖ You are uniquely positioned to identify at-risk populations, provide important social distancing information to them, and serve their healthcare needs through telemedicine
- ❖ No one can do this better than you!

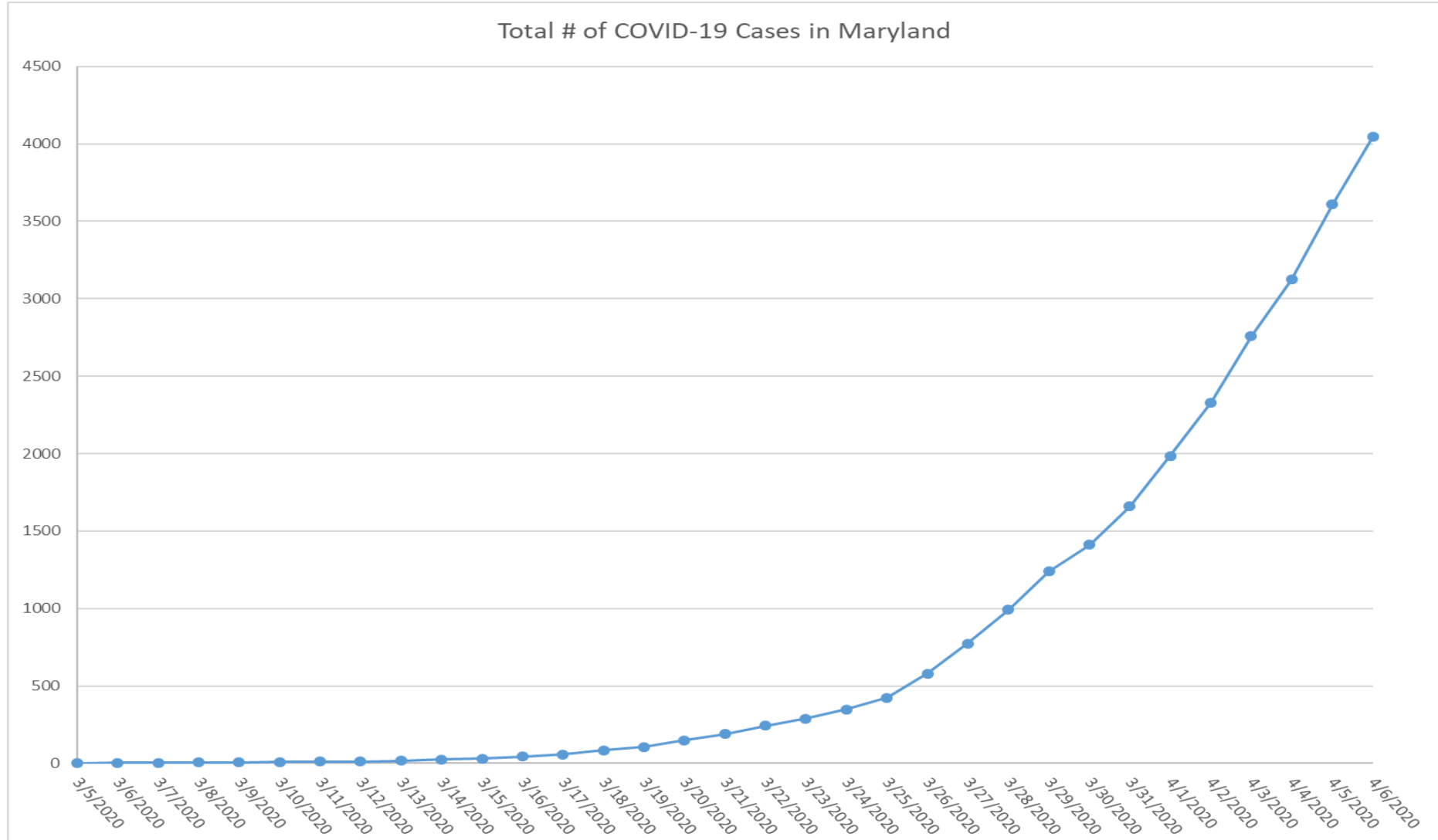
Agenda

- ❖ Today's key updates
- ❖ What's Important Now (WIN)
- ❖ Messaging
- ❖ Testing Locations
- ❖ Patient Management
- ❖ PPE Sources/Requests
- ❖ Aligned Programs – Hospital Surge, Vulnerable Populations and Mass Fatality Plan
- ❖ Announcements
- ❖ Q & A
- ❖ Resources

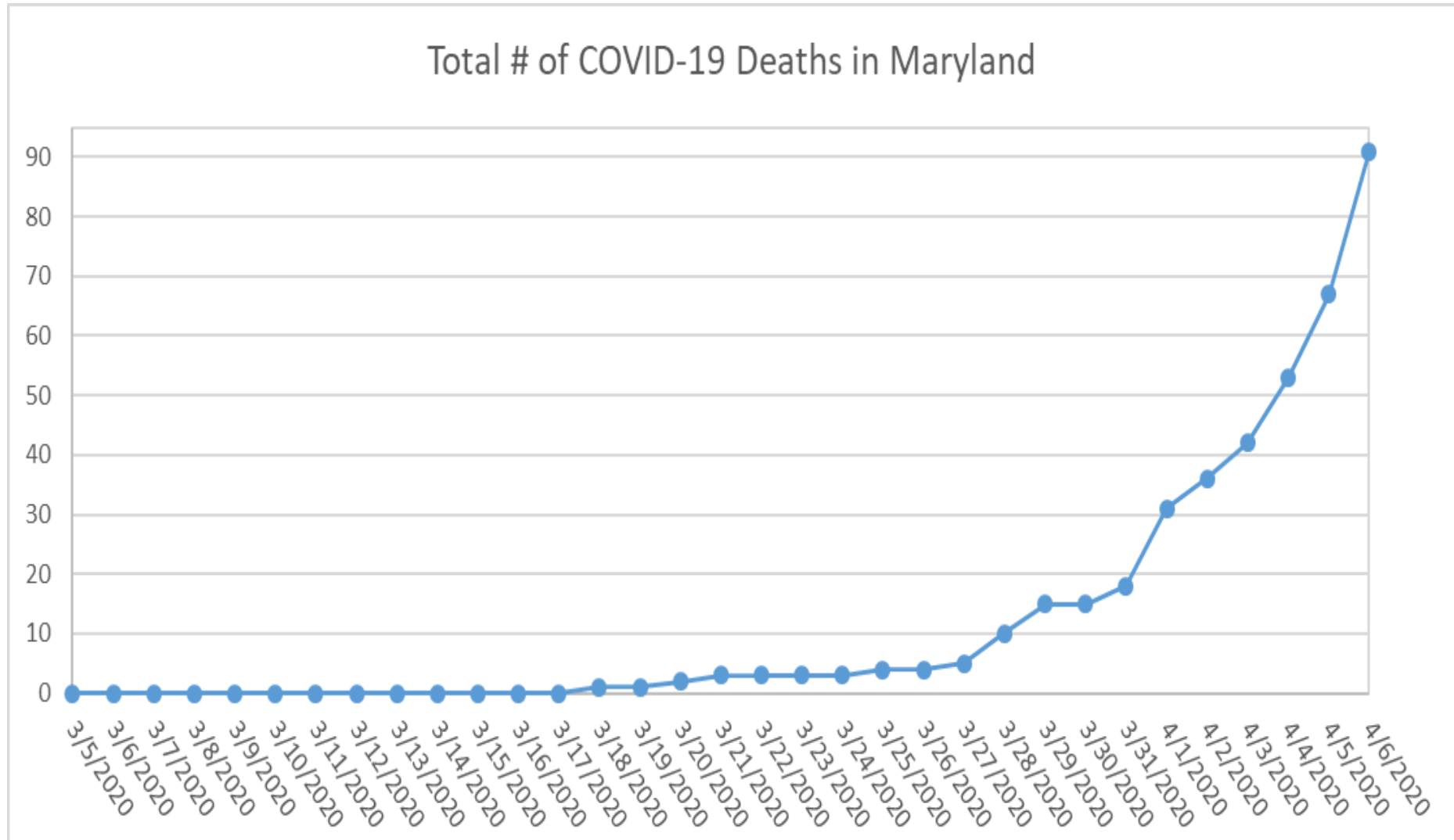
Morbidity and Mortality Update

	New Cases since April 5	Cumulative Cases	Cumulative Hospitalized	Cumulative Deaths
United States		330,891		8910
Maryland	436	4045	1059	91

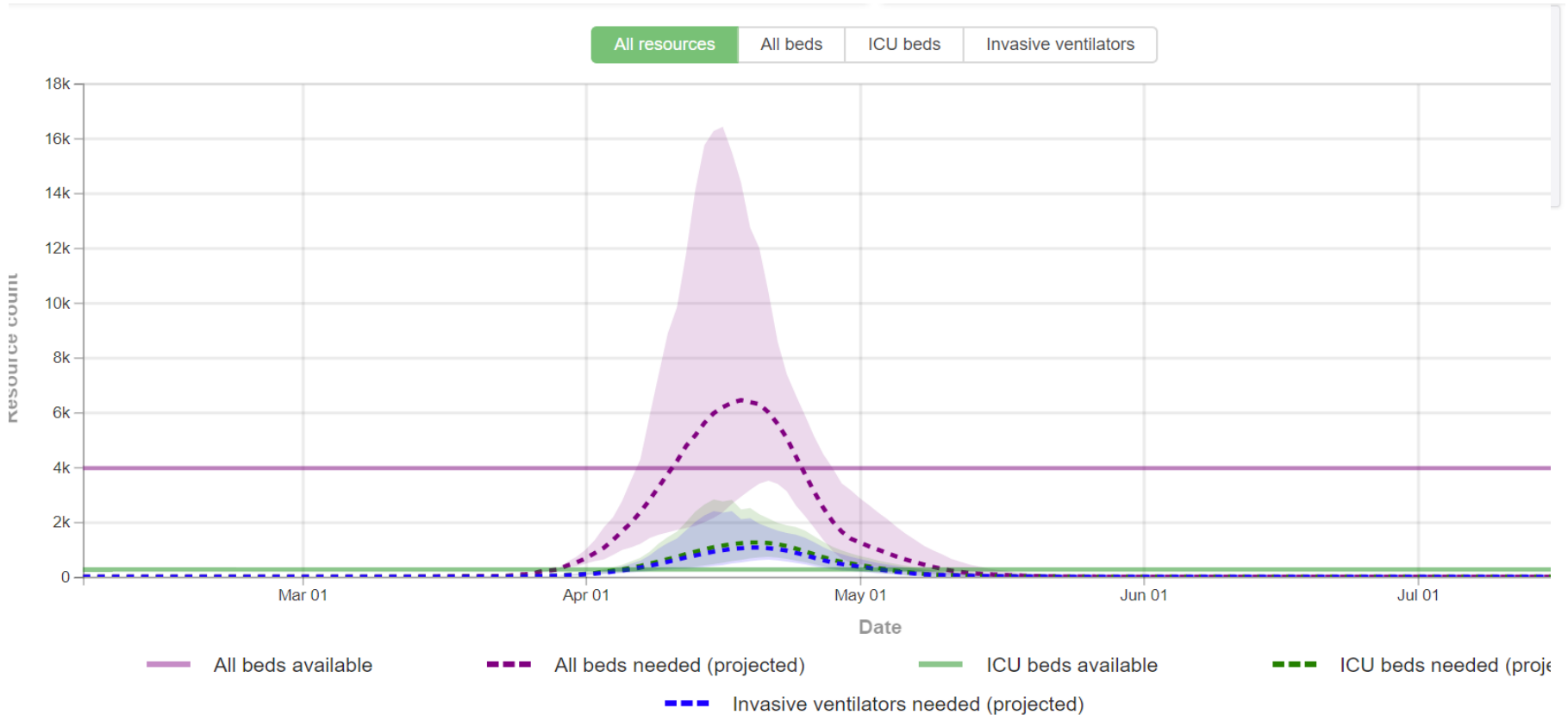
Total COVID-19 Cases in Maryland



Total COVID-19 Deaths in Maryland



Modeling the Surge



<https://covid19.healthdata.org/projections>

What's Important Now (WIN)

- ❖ Identify and contact high-risk patients
- ❖ Maximize non-face-to-face visits using telemedicine
- ❖ Maximize access to care
- ❖ Identify appropriate candidates for testing
- ❖ Clinical management of patients
- ❖ Stay current, stay safe

Messaging to All Patients

- ❖ *Stay home, stay away from this virus* – it can kill you, anyone can carry the virus
- ❖ We are here to support your medical needs - call
- ❖ Stay at least 6 feet away from everyone who do not live with you
- ❖ Ensure your caregiver is also maintaining distance from others and frequently handwashing
- ❖ Maintain at least a 2-week supply of food and medicine
- ❖ If you go out for a walk, keep your distance

Support for Patients at Home

- ❖ Meals on Wheels
- ❖ Visiting nurses and caregivers
- ❖ Support from family
- ❖ Phone calls and videochat to fight loneliness
- ❖ MD Department of Aging Senior Call Check Program

COVID-19 Testing Site Information

- ❖ Patients require a provider order for referral to testing sites
- ❖ Providers contact your local hospital or use the link below
- ❖ Sites are subject to host location restrictions and availability
- ❖ MD is also piloting drive-thru testing at several Vehicle Emissions Inspections Program (VEIP) locations – [FAQs available here.](#)
- ❖ Current list of testing sites, please click [here](#)

Testing Locations – what is known

Testing Site Name	Location	Contact
MedStar St. Mary's Hospital	25500 Point Lookout Rd., Leonardtown, MD 20650	301-475-4911
UMMS, Upper Chesapeake Hospital	500 Upper Chesapeake Dr., Bel Air, MD 21014	443-843-8880
LifeBridge Health, Carroll Hospital	200 Memorial Ave., Westminster, MD 21157	410-601-2222
LifeBridge Health, Sinai Hospital	2401 W. Belvedere Ave., Baltimore, MD 21215	410-601-2222
Greater Baltimore Medical Center Health Partners	555 W. Towsontown, Blvd., Towson, MD	443-849-6819
Queen Anne's County Health Department	1000 College Circle, Wye Mills, Talbot, MD 21679	443-262-9900
Frederick Health Tollhouse	501 W. 7 th St., Frederick, MD 21701	240-215-6310
FedEx Field	Prince George's County	301-883-6627
<u>MedStar Health</u>	Ctrl + click on "MedStar Health" to your left	

VEIP Sites (current limited services days and hours) – Lab Orders

ulptrain.crisphealth.org/web/guest/no-patient-covid-19-lab-order

CRISP Unified Landing Page

HOME PDMP DEA SELF-AUDIT REPORT QUERY PORTAL CENSUS VIEW DELEGATOR DASHBOARD ENS PROMPT PDMP REPORTS

NO PATIENT: COVID-19 LAB ORDER COVID-19 LAB ORDER

Guidance And Advisories

The lab order form will allow your patient to be tested for COVID-19 at select Vehicle Emissions Inspection Program (VEIP) sites throughout Maryland. COVID-19 testing at these VEIP sites will only be available to individuals who are **symptomatic and at high risk for complications from the disease**, as determined by their healthcare provider based on testing guidelines provided by the Maryland Department of Health. Once this form is submitted, your patient will receive an email with a confirmation code. The code is required for scheduling the appointment at a VEIP site. Your patient will have access to view all information included in your form submission below. Click [Here](#) for more information regarding test order prioritization and screening. Contact CRISP Support at 877-952-7477 if you have issues regarding this form.

PLEASE NOTE: There are currently no appointments available at the VEIP COVID-19 drive through testing sites operated by the Maryland Department of Health (MDH). Patients with orders currently entered in the CRISP application will not be able to schedule until more appointments are available. Please consider alternative testing sites if necessary

Patient Information

* First Name: Daisy
* Middle Name:
* Last Name: Duck

* Date of Birth (Format MM/DD/YYYY): 01/01/1984
* Gender: Female

* Home Address 1: 1 Disney Way
* Phone Number: 111-111-1111
* Type: Mobile

Home Address 2:
Alternate Phone Number:
Type:

* City: Orlando
* State: FL
* Zip: 22222
* Email: sheena.patel@crisphealth.org

Physician

* Name: Dr. Doolittle
* NPI: 1234567890
* Phone Number: 555-555-5555

Organization

Name: Aledade inc.
* Fax Number: 555-555-5555

COVID-19 Lab Order

Print

Order Confirmation

Order submitted successfully.

Patient: Daisy Duck

Order Confirmation Code: Duck00001

Patient Instructions

Your patient will receive an email with their Order Confirmation Code (above) and a link to the self-scheduling site. We recommend reading the code to the patient to ensure they have it readily available. If the patient needs assistance to schedule their test, you may schedule for them by clicking Lab Scheduling Tool or they may call ###-###-####.

Ordering Physician	Organization	Date Requested
Dr. Doolittle	ENS_ALED	2020-04-04

Patient Information

First Name Daisy	Middle Name	Last Name Duck
Date of Birth (Format MM/DD/YYYY) 01/01/1984	Gender Female	
Home Address 1 1 Disney Way	Phone Number 111-111-1111	Type Mobile

CDC Recommendations for Cloth Face Coverings

- ❖ Many COVID-19-infected people are asymptomatic
- ❖ Pre-symptomatic people can transmit COVID-19 to others nearby by speaking, coughing, and/or sneezing
- ❖ **Wear cloth face coverings in public when other social distancing measures are difficult or impossible to maintain (e.g. grocery stores and pharmacies, etc.)**
- ❖ Continue to maintain 6-foot social distancing whenever possible

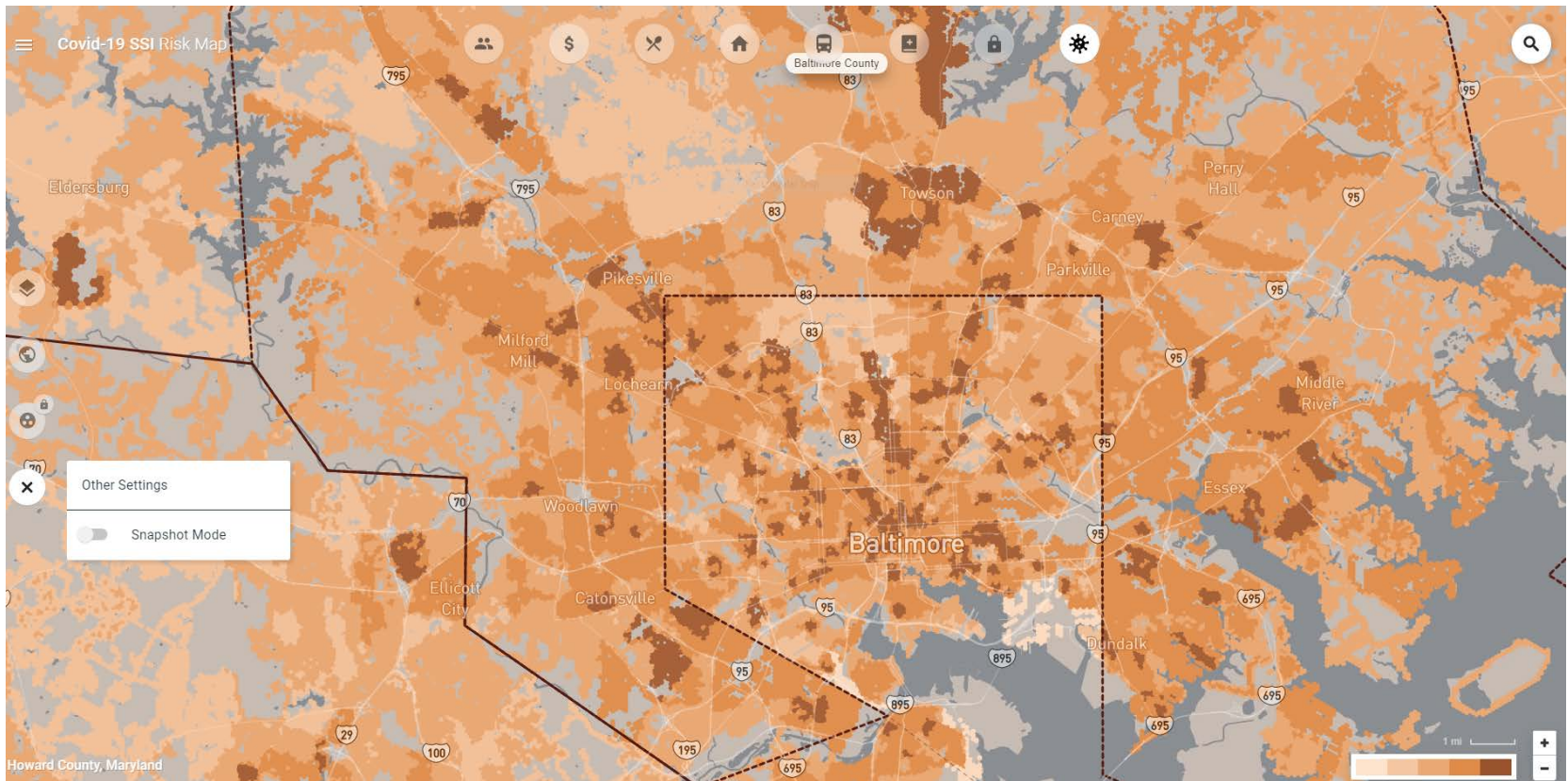
Hospital Surge Preparedness

- ❖ Convention Center medical volunteers – Register through the MRMRC link below
- ❖ Tents and Modular Units - including ICUs
- ❖ Expansion within facilities
- ❖ Student staffing
- ❖ Volunteer staffing opportunities - Maryland Responds Medical Reserve Corps (MRMRC)
 - <https://mdresponds.health.maryland.gov/>
 - Complete Road to Readiness

Vulnerable Populations

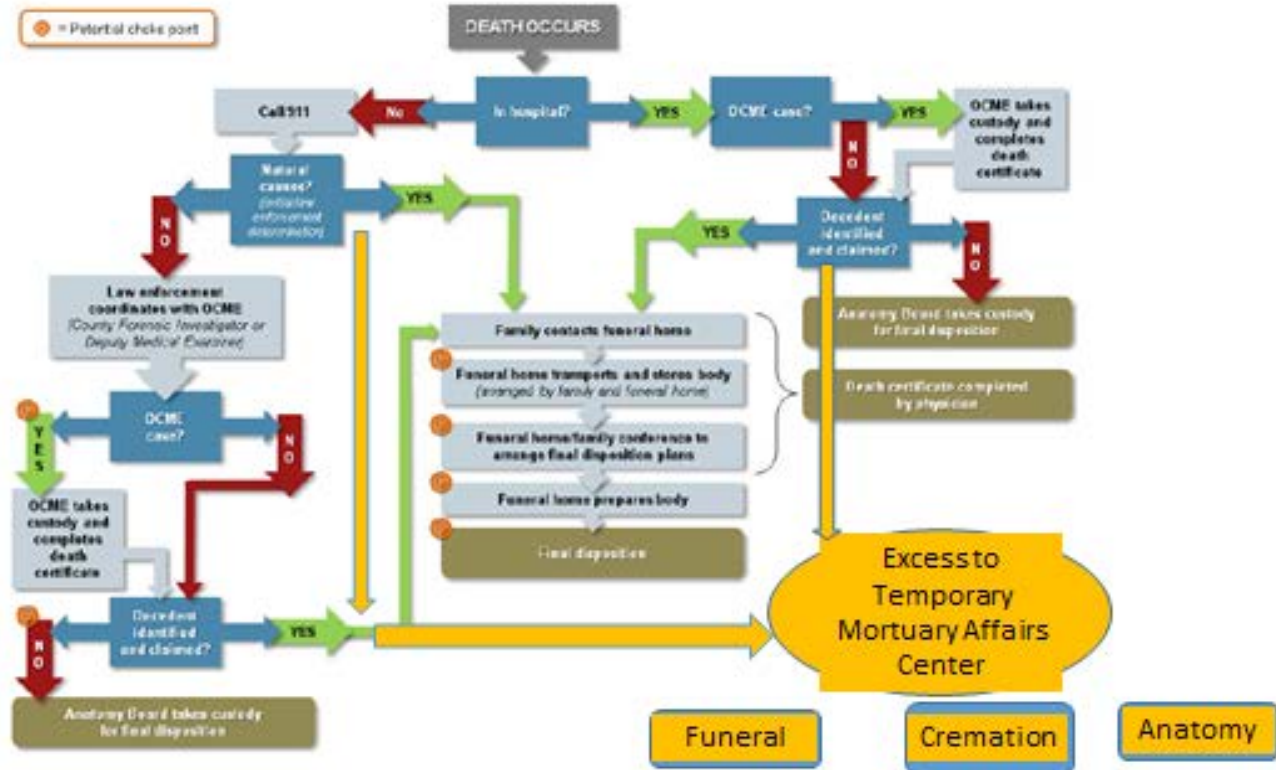
- ❖ Long-term care residents
 - Skilled Nursing Facilities
 - Assisted Living Facilities
 - Continuing Care Retirement Communities
- ❖ Homeless
- ❖ Group homes, Foster Homes
- ❖ Inmates
- ❖ Others with marginal social support

Baltimore City/County Hotspots



Mass Fatality Plan

Appendix B Death Management Process



CDC Guidelines for Management

- ❖ Healthy people can be monitored, self-isolated at home
- ❖ People at higher risk should contact healthcare providers early, even if illness is mild
- ❖ Older adults and people with severe underlying chronic medical conditions are at higher risk, need closer contact
- ❖ Emergency Department and Hospitals only when needed - not for screening or low risk/minimal disease

- ❖ **Guidelines are important and powerful tools, but remember providers' clinical experience and judgment are key to care**

Personal Protective Equipment (PPE) Requests

- ❖ Routed through Local Health Departments
- ❖ Priority as previously stated - may change over time
- ❖ Remain in scarce supply

- ❖ Find PPE request forms and local contacts [here](#)

CME Disclosures and Evaluation

- ❖ Presenters and Planners: Howard Haft, MD, has reported no relevant financial relationships to disclose.
- ❖ MedChi CME Reviewers: The reviewers from the MedChi Committee On Scientific Activities (COSA) for this activity have reported no relevant financial relationships to disclose.
- ❖ Please complete an evaluation at: [COVID-19 Update Evaluation](#)

Announcements

- ❖ Wednesday Webinar (4/8/20) - Update and Behavioral Health Guests
- ❖ Friday Webinar (4/10/20) - Primary Care Practice Spotlights from Member Practitioners
- ❖ Future Spotlights - Dental, Specialty Care

Q&A

Questions and Answers

Please type into the Questions box on the right side of your screen.

Staying Current - Sources

- ❖ CDC
- ❖ MDH COVID-19 information page
- ❖ MDPCP COVID-19 webpage
- ❖ Local Health Departments
- ❖ CONNECT
- ❖ Clinician Letters
- ❖ Multiple Resource Links in Appendix

Appendix

Resources Links

Federal Emergency Funds for Small Business

- ❖ Disaster Loan Assistance (from Small Business Administration)
 - Low-interest financial disaster loans for working capital in small businesses suffering substantial economic injury due to COVID-19
 - FAQs
- ❖ CARES Act (pending federal legislation)
 - Sets up a \$350 billion loan program for small businesses
 - Small businesses can apply for low-interest loans that cover up to 2.5 months of expenses
 - Maximum loan amount is \$10 million
 - Loans can cover payroll, rent, utilities, or existing debt obligations
 - Interest rates cannot exceed 4%
 - If employer continues to pay workers through June, the amount of the loans that went toward eligible costs would be forgiven
 - Loans will be available through the Small Business Administration and Treasury-approved banks, credit unions, and some nonbank lenders

State Emergency Funds for Small Business

- ❖ COVID-19 Layoff Aversion Fund (from Maryland Governor Larry Hogan and Maryland Dept. of Labor)
 - Designed to support businesses undergoing economic stresses due to the pandemic by minimizing the duration of unemployment resulting from layoffs
 - Award of up to \$50,000 per applicant
 - Will be quick deployable benefit and customizable to specific business needs
- ❖ View the One-Pager
- ❖ COVID-19 Layoff Aversion Fund Policy
- ❖ COVID-19 Layoff Aversion Fund Application (Excel)
- ❖ Submit your completed application to: LaborCOVID19.layoffaversion@maryland.gov

Food Resources

❖ Nutrition: Inform patients that children can receive three free meals/day at sites listed on:

- | | |
|--------------------------------|----------------------------|
| ➤ <u>Maryland Summer Meals</u> | <u>Howard County</u> |
| ➤ <u>Montgomery County</u> | <u>Anne Arundel County</u> |
| ➤ <u>Prince Georges County</u> | <u>St. Mary's County</u> |
| ➤ <u>Charles County</u> | <u>Harford County</u> |
| ➤ <u>Frederick County</u> | <u>Calvert County</u> |

❖ Free meals available from 42 rec centers in Baltimore

- Call 311 for locations and to schedule pickup time

Resources for Specific Groups

- ❖ Community- and Faith-Based Organizations
(<https://www.cdc.gov/coronavirus/2019-ncov/community/guidance-community-faith-organizations.html>)
- ❖ Mass Gatherings and Large Community Events
(<https://www.cdc.gov/coronavirus/2019-ncov/community/mass-gatherings-ready-for-covid-19.html>)
- ❖ Non-Pharmaceutical Interventions for Specific Groups
(<https://www.cdc.gov/nonpharmaceutical-interventions/index.html>)

Resources and References

- ❖ Maryland Department of Health Coronavirus Website (<https://coronavirus.maryland.gov>)
- ❖ CDC Coronavirus Website (<https://www.cdc.gov/coronavirus/2019-nCoV/index.html>)
- ❖ CDC National data on COVID-19 infection and mortality (<https://www.cdc.gov/coronavirus/2019-ncov/cases-updates/cases-in-us.html>)
- ❖ CDC Interim Guidance for Homes and Communities (<https://www.cdc.gov/coronavirus/2019-ncov/hcp/guidance-prevent-spread.html>)
- ❖ CDC Interim Guidance for Businesses (<https://www.cdc.gov/coronavirus/2019-ncov/specific-groups/guidance-business-response.html>)
- ❖ CDC Interim Guidance for Childcare and Schools (<https://www.cdc.gov/coronavirus/2019-ncov/specific-groups/guidance-for-schools.html>)
- ❖ CDC Travel Website (<https://wwwnc.cdc.gov/travel/>)

State Emergency Funds for Small Business

- ❖ Maryland Small Business COVID-19 Emergency Relief Loan Fund
 - \$75 million loan fund (to be paid to for-profit business only)
 - Loans are up to \$50,000
 - No interest or principal payments due for the first 12 months
 - Thereafter converts to 36-month term loan of principal and interest payments, with interest rate of 2% per annum
- ❖ Maryland Small Business COVID-19 Emergency Relief Grant Fund
 - \$50 million grant program for businesses and non-profits
 - Grant amounts of up to \$10,000
 - Grant amounts not to exceed three months of demonstrated cash operating expenses for Q1 2020
- ❖ Emergency Relief Fund FAQ
- ❖ Questions or concerns
email fpaaworkflowcoordinator.commerce@maryland.gov.