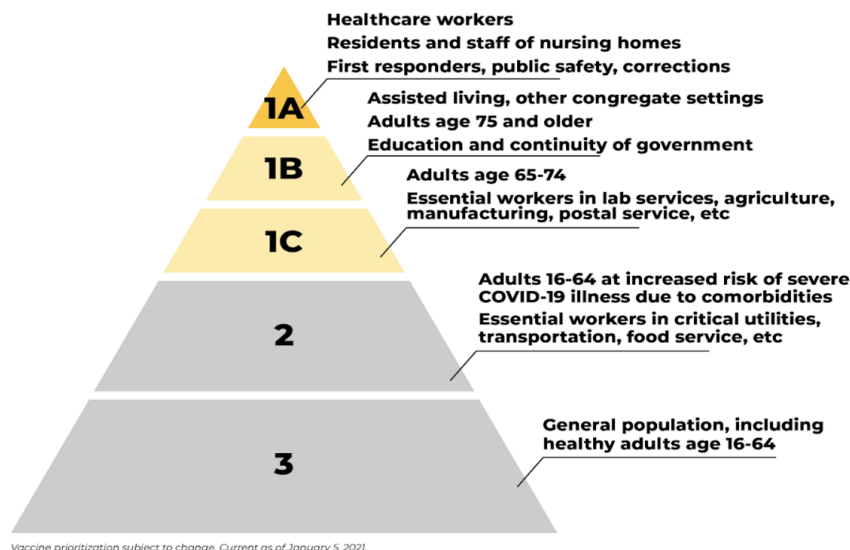


# Prioritizing Your Patients for Covid-19 Vaccination

Rollout of the Covid-19 vaccine will take place in phases, as supplies will be limited initially and vaccines will be prioritized for high-risk groups. As a primary care provider, you may be called on to identify your highest-risk patients. Use this guide as a starting point for considering prioritization.

*Note: healthcare workers themselves are in prioritization Phase 1A, and should contact their affiliated hospital system or Local Health Department to make arrangements for vaccination.*

## Maryland Vaccine Priority Groups



Maryland is currently in Phase 1A, with extremely limited supply. When Maryland moves into future phases, primary care providers can help identify **people at significantly higher risk of severe Covid-19 illness**.

For information about who is included in which phase, see [the Governor's Newsroom Release](#).

## Identifying People at High-Risk of Severe Covid-19 Illness

There are many ways to sub-prioritize your population to determine risk. Consider the following options, or any custom prioritization you have developed at your practice.

ACIP has identified **persons 75 and older** as a target group for vaccination as this group has the highest mortality rate from Covid-19. Use your EHR to export a list of patients in this age group for prioritization. For Phase 1C, move on to patients age 65-74.

### Age

If you do not have this data in your EHR, you can also use MDPCP CRISP Reporting Services. On your Population Summary report, use the Beneficiary Count bubble and drill down to Beneficiary Details to get a list of all your MDPCP attributed beneficiaries. From there, export to Excel and use the Age column to filter. Note, this list will only include MDPCP attributed beneficiaries.

---

The **Covid-19 Vulnerability Index (CVI)** is a ready-made Covid-19 risk stratification tool, created by MDPCP in partnership with CRISP and Socially Determined. CVI was designed to help care teams identify the most vulnerable patients for proactive outreach and support during Covid-19, and it can also be used for identifying high-risk patients for vaccine prioritization.

## CVI

A patient's CVI risk score is based on a multivariate model including factors such as:

- Demographic factors, such as advanced age
- Chronic disease burden, such as asthma, diabetes, hypertension
- Social risk factors, such as elevated risk of food insecurity or housing instability, as well as community-level SDOH risk factors
- Environmental factors, including living in congregate sites (e.g. senior living facilities, shelters, prisons)

The CVI is housed in the Likelihood of Avoidable Hospital Events tool within CRISP Reporting Services for MDPCP. You can export your Likelihood of Avoidable Hospital Events report to Excel, and then sort the data by CVI. For prioritization, first prioritize your patients with a **CVI score of 5 (severe risk)**, then a CVI score of 4 (high risk), etc.

Note that this report only shows your MDPCP attributed beneficiaries. Additionally, be aware that this may overlap with other prioritization methods. For example, you will likely see patients over 75 with CVI scores of 5.

---

You can use your own risk stratification method to identify patients at high-risk of severe Covid-19 illness through EHR reports (or reports through another data source available to your practice). Factors to consider in these reports include:

## Other

- Age
- Underlying medical conditions (immunosuppression, diabetes, cardiovascular disease, obesity, etc.). Use [CDC's list of medical conditions](#)
- HCC score
- Social and environmental risk factors
- Essential workers. See [ACIP slides](#) or [AMA site](#) for essential worker categories

---

## What To Do After Identifying High-Risk Patients

After identifying your patients at high-risk of severe Covid-19 illness, you can start to support these patients in receiving the vaccine when Phase 1B of vaccination is active (and future phases). There will be more information to come about the process for helping these patients receive vaccination at that time. The process may include:

1. Vaccinating prioritized patients *at your practice*
2. Referral to vaccination sites

---

## Questions?

- Reach out to your MDPCP Practice Coach or [mdh.pcmode@maryland.gov](mailto:mdh.pcmode@maryland.gov)
- Register for upcoming MDPCP Covid-19 webinars [at this link](#) under "Webinars"