



# **Covid-19 Flash Update**

**Maryland Department of Health  
Maryland Primary Care Program  
Program Management Office**

14 December 2020

# COVID-19 Daily Report - Maryland Department of Health

Data reported as of 12/14/2020

**236,961**

confirmed cases

**40,010**

tests reported 12/13

**5,061,387**

cumulative tests

**4,978**

confirmed deaths

**+2,314**

cases reported on 12/13\*

**7.28%**

daily positivity reported 12/13

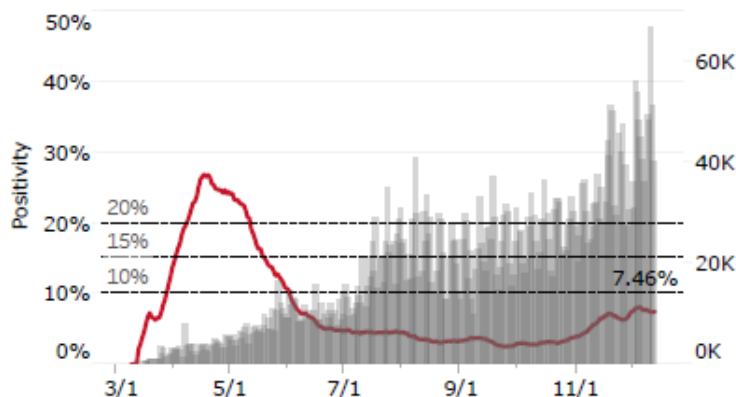
**7.46%**

7-day avg. positivity\*\* reported 12/13

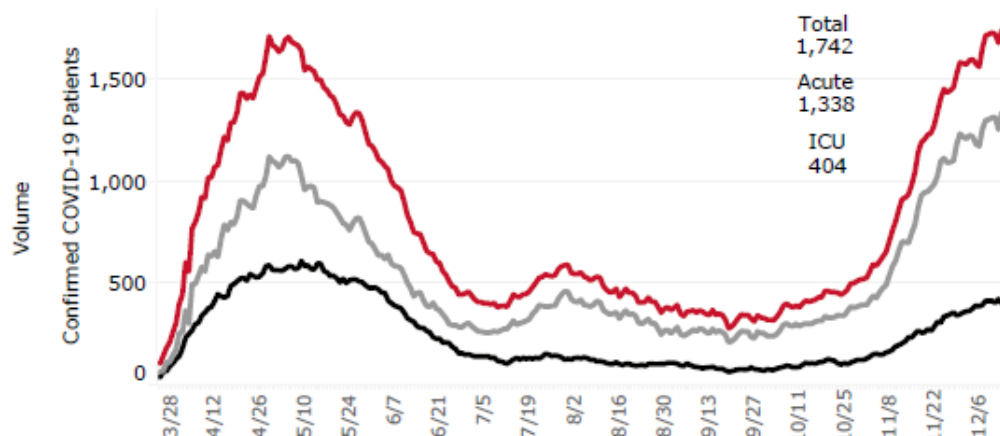
**+24**

deaths reported on 12/13

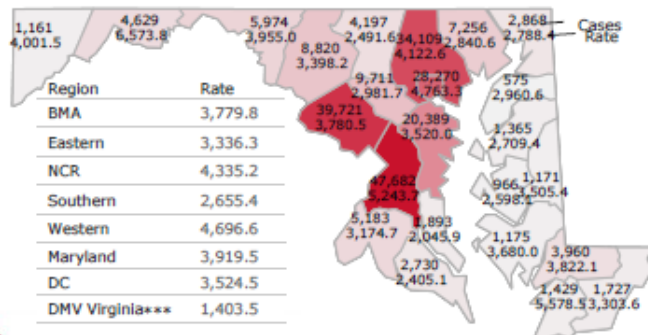
## 7-Day Avg. Percent Positive Testing\*\* and Total Testing Volume



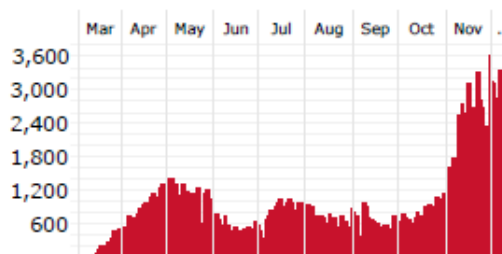
## Statewide Acute/ICU Beds Occupied by COVID Patients



## Cases and Rates by County of Residence

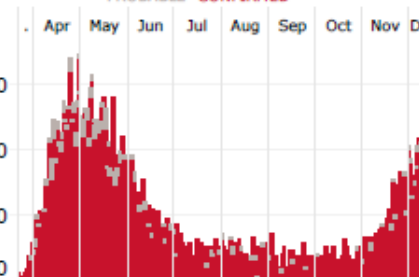


## Daily Cases by Specimen Collection Date



## Daily Deaths

PROBABLE CONFIRMED



All case-related counts on this dashboard are of individual people infected with COVID-19. Report date: the day a case was reported to the Maryland Department of Health. Specimen date: the day the initial lab specimen was collected.

BMA: Baltimore Metro Area; NCR: National Capital Region. DMV: DC, Maryland, and Virginia Area

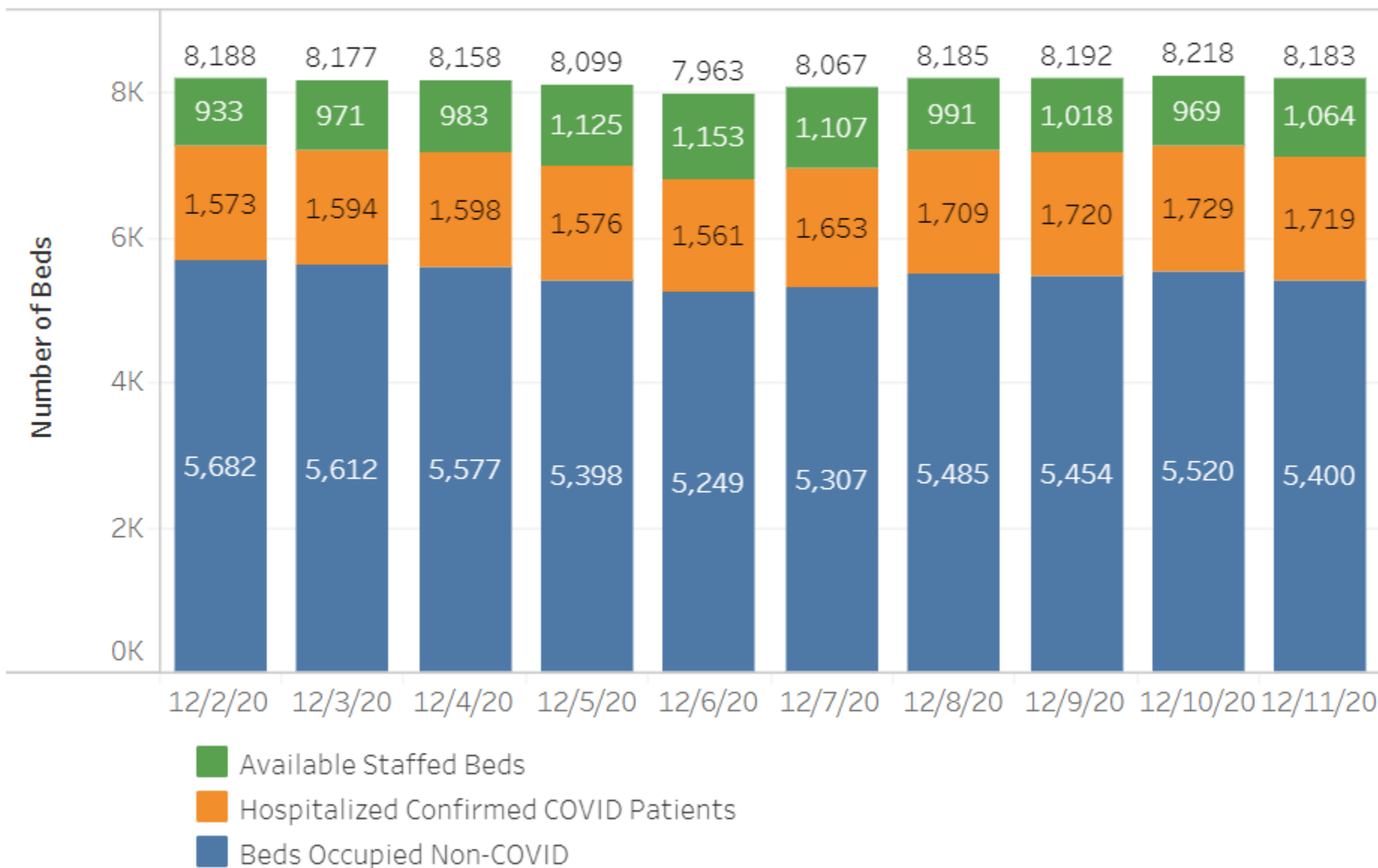
Rates calculated using total confirmed cases and 2019 population estimates. Rates do not exclude recovered cases. Rates are calculated as cases per 100,000 population. 2019 Maryland Population estimates from the Maryland Department of Planning, March 2020.

\*\*Daily case increase uses report date.

\*\*\*Positivity calculated using a 7-day rolling average

\*\*\*DMV Virginia includes Alexandria, Arlington, Fairfax, Fairfax City, Falls Church, Loudoun, Manassas, Manassas City, and Prince William.

## Statewide Occupied Staffed - Adult Acute Care and ICU - Last 10 Days



# Important Items This Week

---

- ❖ Post Thanksgiving and pre-holiday increases
- ❖ Cases, case rates and percent positivity continue to rise
- ❖ Hospitals at or near capacity
- ❖ Staffing shortages looming- volunteer and paid opportunities via [MdMedNow](#)
- ❖ Vaccines beginning now
- ❖ Opportunity to reduce hospitalization using monoclonal antibodies
- ❖ Important to continue testing; assistance available from Testing Adoption Team
- ❖ Contact tracing is being overwhelmed- inform positive patients to quarantine
- ❖ CDC shortened quarantine period
- ❖ Continue using COVID-19-specific workflows to mitigate virus spread

# Vaccines

---



Source: NBC News, Associated Press

# Vaccines

---

- ❖ Pfizer EUA approved and released
  - ACIP concluded 12-11-20 and added to vaccine recommendations in MMWR
  - Distribution has begun
- ❖ Moderna EUA today –
  - Expect distribution to begin 12-21-20
- ❖ Astra Zeneca to follow
- ❖ All initially in short supply

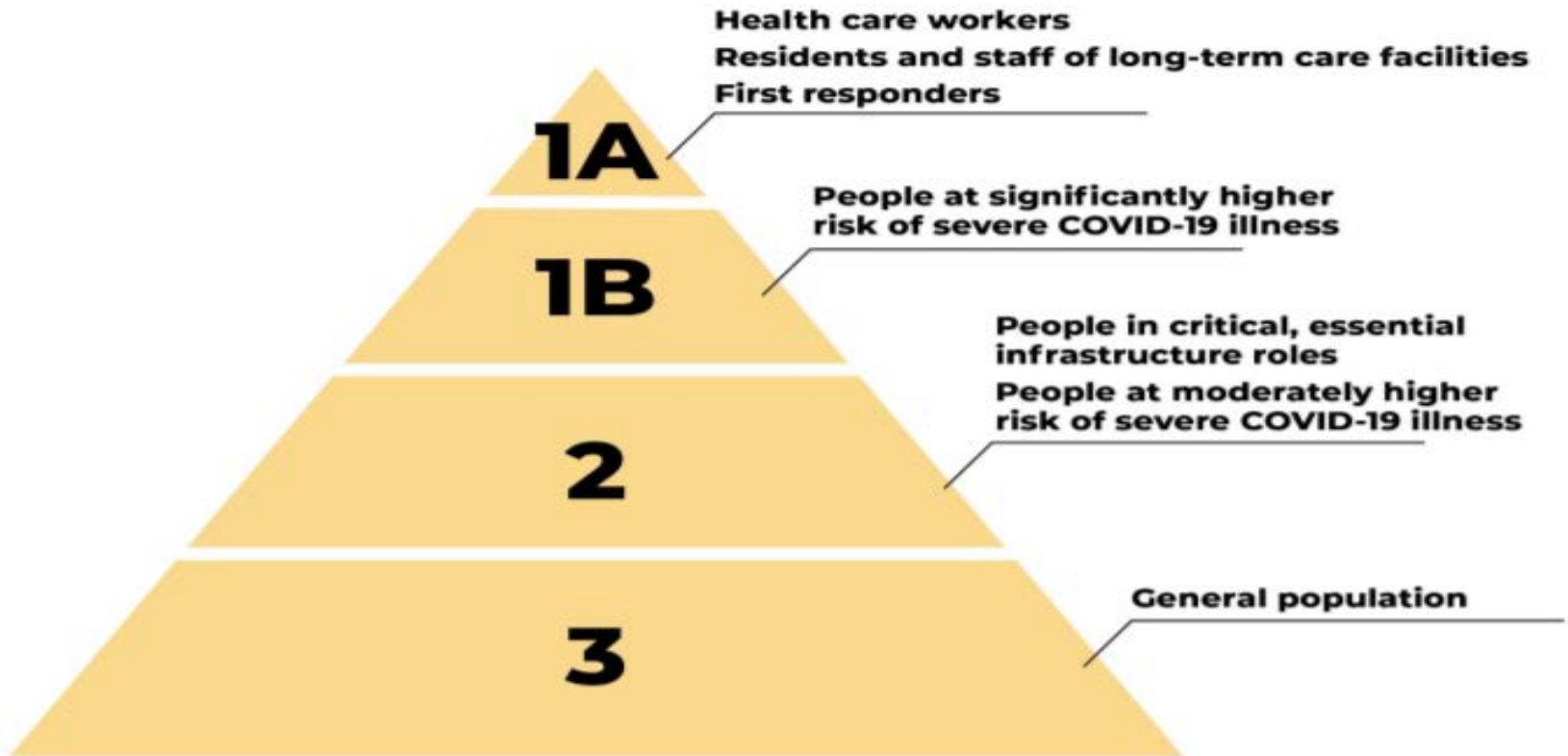
# Distribution

---

- ❖ Hospitals and Health Departments in Phase 1A
  - 155,000 initial
- ❖ Pharmacy Chains for SNF residents and staff
- ❖ January provider registration for Covid vaccine opens
  - Must be fully connected and operational on ImmUNET in advance
  - Vaccine ordering through ImmUNET in phase 2

# Priority Groups

---



Vaccine prioritization may be subject to change.



# Pfizer Vaccine – Key points

---

## ❖ Administration and distribution

- Ultracold storage, 5 days in refrigeration
- 985 doses per box
- 15 and 30 minute observation periods
- 2 dose regimen- 17-21 days (can extend)
- Can defer for 90 days after illness

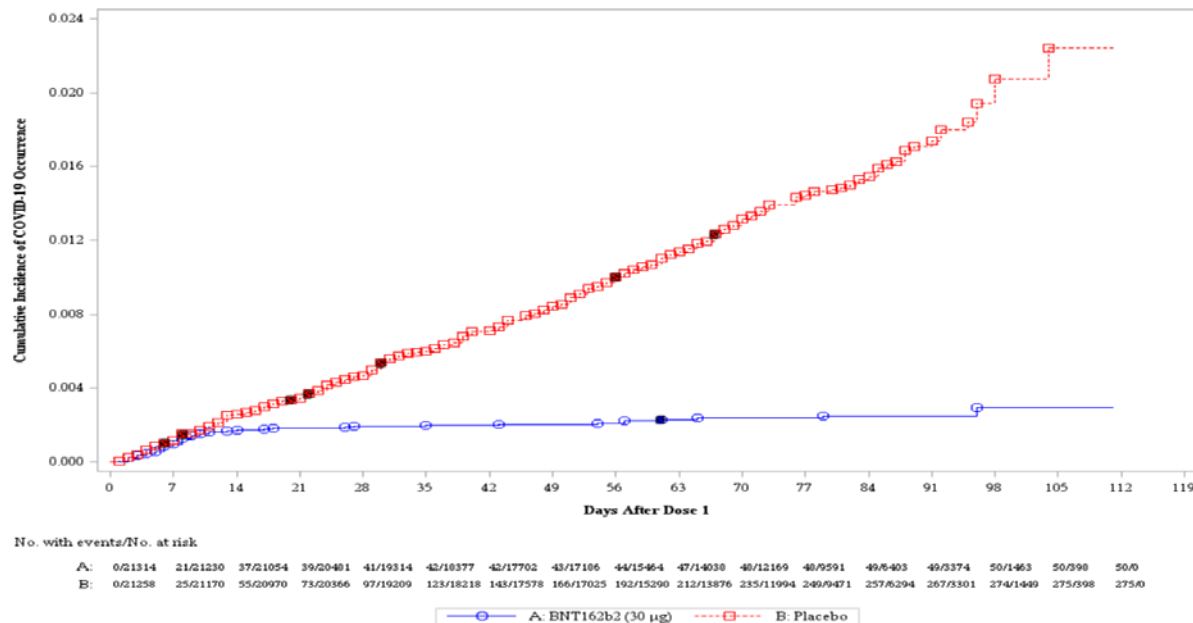
## ❖ Indications

- 16 years and older
- Pregnant and lactating can be considered
- caution with those with h/o anaphylaxis

# Efficacy

- ❖ 95% reduction in symptomatic PCR tested cases within 7 days after first dose
- ❖ No evidence that transmissibility is eliminated; vaccinated individuals should still wear masks

**Figure 13** Cumulative Incidence Curves for the First COVID-19 Occurrence After Dose 1 – Dose 1 All-Available Efficacy Population



# Safety

---

- ❖ Serious adverse event rare in 2 month follow up
- ❖ Frequent side effects
  - Local reaction
  - Fatigue
  - Fever, chills, headache
- ❖ Consider side effects when vaccinating critical workers in closed units
- ❖ Caution with allergic reactions
- ❖ mRNA rapidly dissipates, now evidence crossing placental barrier

# Provider Recruitment and Enrollment

---

Maryland healthcare providers interested in receiving Covid-19 vaccine will have to take two steps:

- 1. Onboard with ImmuNet** to report vaccination data
  - **EHR connected to ImmuNet** to report all vaccine doses administered
  - *Reach out to your MDPCP Practice coach if you do not know your current ImmuNet onboarding status*
- 2. Register with ImmuNet as a Covid-19 vaccine provider** in order to receive and administer vaccine.  
*More information soon - not open currently for ambulatory providers. If you try to register now, it will not work.*

**Where is your practice?**

**Enrolled and reporting**

Verify patients' records in ImmuNet are being accurately transmitted to ImmuNet by:  
> [logging in](#), and  
> viewing a recently immunized patient's record for completeness.

**Enrolled, but not reporting**

Follow the steps on the [Immunet website](#) under "Providers with Electronic Health or Medical Records Systems (EHR/EMR)" to be added to the ImmuNet queue.

Put in a ticket with EHR vendor to implement immunization interface. Be sure to include:  
> ImmuNet-assigned Org ID (contact [HelpDesk](#) for Org ID)  
> [Technical specs](#) for interface  
> ImmuNet HelpDesk [contact information](#)

**Not enrolled and not reporting**

Complete [ImmuNet enrollment form](#)

Wait for email containing username and password. Review links.

**Congratulations!**

You are enrolled and reporting to ImmuNet.

**Register as a Covid-19 vaccinator**

*Registration for ambulatory providers not yet open*



# Monoclonal Antibodies Clinician Letter

- ❖ Bamlanivimab and Regeneron monoclonal antibody EUAs
- ❖ Limited supplies- ~ 1500 doses/week
- ❖ **For ambulatory Covid positive at risk of hospitalization within 10 days on onset of symptoms**
- ❖ 6 infusion centers + SNFs open - more to follow
  - Baltimore Convention Center Field Hospital
  - Peninsula Regional- Tidal Health
  - Meritus Health
  - Adventist – Takoma Park
  - UPMC
  - Atlantic General
  - SNFs

***Referrals are currently low. Refer your patients using [this referral form](#)***

# Covid-19 Antibody Treatment Criteria

---

## ❖ Patient Criteria

- Have BMI  $\geq 35$
- Have chronic kidney disease
- Have diabetes
- Are currently receiving immunosuppressive treatment
- Are  $\geq 65$  years old
- Are  $\geq 55$  years old and have
  - ✓ Cardiovascular disease, or
  - ✓ Hypertension, or
  - ✓ Chronic obstructive pulmonary disease/other chronic respiratory disease
- Are 12 – 17 years old AND have
  - ✓ BMI  $\geq 85^{\text{th}}$  percentile for their age and gender based on CDC growth charts, or
  - ✓ Sickle cell disease, or
  - ✓ Congenital or acquired heart disease, or
  - ✓ Neurodevelopmental disorders, or
  - ✓ A medical-related technological dependence, or
  - ✓ Asthma

# Testing Marylanders in Primary Care

---

- ❖ Testing in offices serves patients and normalizes the process
- ❖ Testing or referring patients for testing is key to keep the State safe
- ❖ Specimen collection continues to evolve from nasopharyngeal sampling to the current simplified nasal sampling
- ❖ Testing will continue to evolve with Point of Care tests and saliva tests
- ❖ [MDPCP Guidance on testing in primary care \(from July 2020\)](#)



# Updates on Testing Adoption Team

---

- ❖ Teams began outreach 1 December
- ❖ Streamlined workflows with less PPE required
- ❖ Anterior nasal and saliva testing reduce PPE burn rate
- ❖ Ordering for home based tests when appropriate
- ❖ Testing resource information in appendix

# Release from Quarantine

---

- ❖ Was 14 days from positive test sample for asymptomatic
- ❖ Shortened to 10 days
- ❖ Further shortened to 7 days if negative test on day 5 or later
- ❖ Must continue to wear mask and social distance
- ❖ Must monitor for symptoms

# Patient Information and Workflows

---

- ❖ Reinforce scheduled visits
- ❖ Separate sick and well to the extent possible
- ❖ Avoid waiting room crowds
- ❖ Outdoors screening and testing as possible
- ❖ Tailor staff and resources to need
- ❖ Telehealth, including testing, when applicable
- ❖ Quarantine period for positive tests shortened to 10 days for asymptomatic and 7 days based on negative test (after 5 days)

# Updates on PPE

---

- ❖ Order from current suppliers
- ❖ Use list in appendix
- ❖ If all supplier resources exhausted
  - Use form previously supplied (appendix)
  - Request from County Health Departments
  - State resources as last resort- distributed through local health department
  - Priority
    - ✓ Hospitals
    - ✓ SNFs
    - ✓ Community Providers, others

# Discussion and Q/A

---

# Appendix

---

## Resources and Links

# Maryland Covid-19 Vaccination Plan

---

- ❖ Maryland has developed a Covid-19 vaccination plan to vaccinate all Marylanders interested in receiving vaccine
- ❖ Plan was released on Tuesday, October 20, 2020
- ❖ This is a working plan and subject to change as new information is received and the Covid-19 pandemic continues to evolve
- ❖ Copy of the plan can be found here:  
[https://phpa.health.maryland.gov/Documents/10.19.2020\\_Maryland\\_Covid-19\\_Vaccination\\_Plan\\_CDCwm.pdf](https://phpa.health.maryland.gov/Documents/10.19.2020_Maryland_Covid-19_Vaccination_Plan_CDCwm.pdf)

# Pfizer and Moderna Vaccines

---



- ❖ Preliminary analysis shows 90% effectiveness
- ❖ Two doses, 21 days apart
- ❖ -70° C storage
- ❖ Based on analysis of 94 infections in a 44,000-person study



- ❖ Preliminary analysis shows 94% effectiveness
- ❖ Two doses, 28 days apart
- ❖ -20° C storage
- ❖ Based on analysis of 95 infections in a 30,000-person study

➤ Long-term safety and efficacy data not yet collected



# Phased Approach

	Phase 1	Phase 2
<b><i>Vaccine availability</i></b>	Limited	Widespread
<b><i>Approach</i></b>	Targeted	Universal
<b><i>Vaccine available to:</i></b>	<ul style="list-style-type: none"> <li>• Frontline healthcare workers</li> <li>• Other essential workers</li> <li>• Those at highest risk of developing complications from Covid-19 (ACIP high risk conditions)</li> </ul>	<ul style="list-style-type: none"> <li>• General public</li> </ul>
<b><i>Vaccine distribution by:</i></b>	<ul style="list-style-type: none"> <li>• Local health departments</li> <li>• Hospitals</li> <li>• Vaccination clinics (through LHDs)</li> <li>• Essential employer work sites</li> </ul>	<ul style="list-style-type: none"> <li>• Local health departments</li> <li>• Hospitals</li> <li>• Pharmacies</li> <li>• Primary care practices</li> <li>• Urgent care centers</li> <li>• School vaccination clinics</li> </ul>

# Provider Recruitment and Enrollment

---

Maryland healthcare providers interested in receiving Covid-19 vaccine will have to take two steps:

- 1. Onboard with ImmuNet** to report vaccination data
  - **EHR connected to ImmuNet** to report all vaccine doses administered
  - **MDPCP practice coaches are communicating with practices regarding their current onboarding status and next steps to register and enroll**
- 2. Register with ImmuNet as a vaccine provider** in order to receive and administer vaccine.  
*Information to come November 2020*

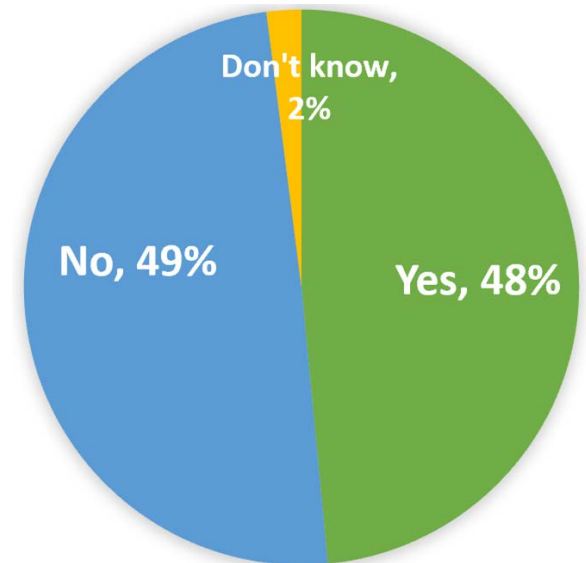
# Vaccine Hesitancy

## (You play a critical role in shaping these attitudes)

- ❖ Pre-existing group of anti-vaccine people
- ❖ Current political push for a vaccine before the election
- ❖ Warp Speed connotation of cutting corners
- ❖ Inconsistent messaging
- ❖ Novel types of vaccines
- ❖ ***Requires consistent accurate and timely messaging from trusted sources (Healthcare Providers)***

### Goucher College Poll

If an FDA-approved vaccine to prevent coronavirus was available right now at no cost, would you agree to be vaccinated?



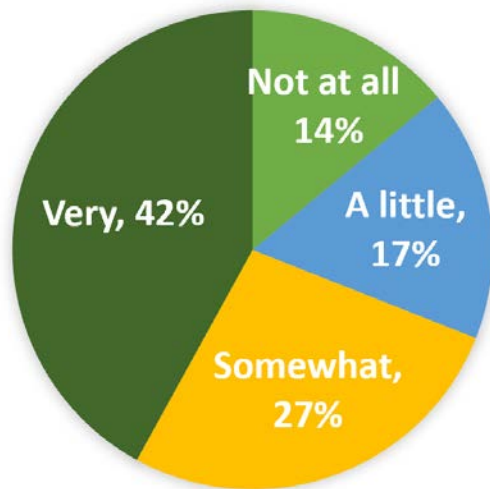
# Marylanders Views on Covid

## (You play a critical role in shaping these attitudes)

---

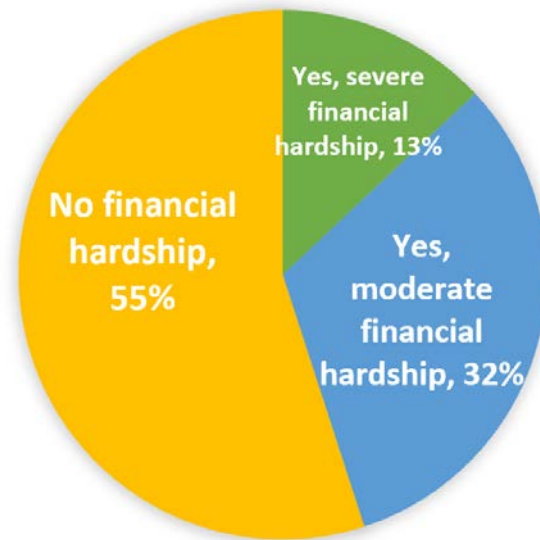
*October 2020 Goucher College Poll of 1,002 Marylanders*

**How concerned are you**—[very, somewhat, a little, or not at all]—  
about yourself personally or a  
close family member getting the  
coronavirus?



Has the coronavirus outbreak **caused any financial hardship** for you or your household?

If “yes,” follow-up with: Is that a severe hardship that affects your ability to maintain your current standard of living, or is it a moderate hardship that affects you somewhat but does not jeopardize your current standard of living?



# Covid-19 Vaccines/Immunization Information

---

- ❖ [Maryland Covid-19 Vaccination Plan](#)
- ❖ [New York Times Coronavirus Vaccine Tracker](#)
- ❖ ImmuNet Information
  - [ImmuNet enrollment form](#)
  - [ImmuNet helpdesk contact information](#)
  - [Guidance for practices how about reporting to ImmuNet](#)
  - [Technical specifications for the EHR interface with ImmuNet](#)
  - [ImmuNet log-in information portal](#)
- ❖ [Summary of vaccines under development](#)

# Covid-19 Testing Information

---

- ❖ [Maryland Department of Health testing announcements and accessibility information and resources](#)
- ❖ [CDC Covid-19 testing overview](#)
- ❖ [MDPCP Roadmap to Recovery – Covid-19 testing guidelines](#)
- ❖ [Maryland Department of Health guidance regarding point of Care rapid antigen Covid testing](#)
- ❖ [myLAB Box - Covid-19 testing program for Maryland clinicians](#)
- ❖ [FDA letter to clinical laboratory staff and health care providers about the potential for false positive results with rapid antigen tests for Covid-19](#)

# Primary Care Involvement

---

- ❖ Continue to encourage and vaccinate your patients with the flu shot
- ❖ Ensure that you are onboarded (connected) with ImmuNet to report vaccinations administered
- ❖ Once available, register to become a Covid vaccine provider
- ❖ Use the CVI tool to begin to identify your patients that are at a higher risk for Covid

# Scheduling In-Office Appointments

---

- ❖ Patient calls in for an appointment
  - Reception screens patient on the phone using the [pre-visit screening template](#)
  - Schedule in-office visits for different groups: At-risk and vulnerable patients on certain days, healthier patients on other days
  - Schedule telehealth and non-office-based care for other patients including follow-ups and patients uncomfortable with office visits
- ❖ Check In
  - Practice remote check in and limited front-desk contact
  - Consider using a triage zone outside of office or main area;
  - Or use a barrier at the front desk
  - Design your office to accommodate patients who come in specifically for Covid testing and triage, separate from patients who arrive for non-Covid related and elective procedures
    - ✓ Ensure patients and staff do not cross between Covid and non-Covid areas
    - ✓ Set aside a specific area for patients who come in for testing to wait and be triaged



# Scheduling In-Office Appointments

---

- ❖ Checking out
  - Practice remote check out, limit front desk exposure;
  - Or use a barrier at the front desk
- ❖ If patient is paying co-pays, etc., set up credit card reader outside of the barrier
- ❖ Other workflow resources
  - [Care management workflows](#)
  - [BMJ telemedicine workflow graphics](#)
  - [CDC flowchart to identify and assess 2019 novel Coronavirus](#)
  - [CDC telephone evaluation flow chart for flu](#)
  - [CDC guidance for potential Covid-19 exposure associated with international or domestic travel](#)

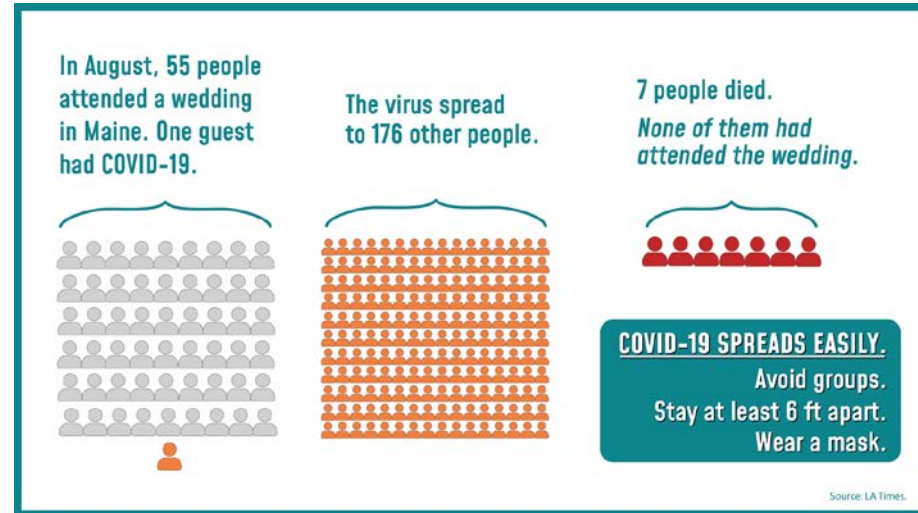
# CDC Guidelines for Covid Patient Management

---

- ❖ Healthy people can be monitored, self-isolated at home
- ❖ People at higher risk should contact healthcare providers early, even if illness is mild
- ❖ Older adults and people with severe underlying chronic medical conditions are at higher risk, need closer contact
- ❖ Emergency Department and Hospitals only when needed - not for screening or low risk/minimal disease
- ❖ **Guidelines are important and powerful tools, but remember providers' clinical experience and judgment are key to care**

# Covid-19 Guidance for the Holidays

- 1) Celebrate with the people in your own immediate household
- 2) Don't attend events or social gatherings if you're feeling ill or if you have had close contact with someone with Covid-19 in the last 14 days
- 3) Understand the Covid-19 precautions for the event or social gathering you are attending
- 4) Wear a face covering



*Large (and small) social gatherings spread Covid-19*

# Covid-19 Guidance for the Holidays

---

- 5) Limit the number of people you come into contact with by avoiding large gatherings or multiple events with different groups of people
- 6) Check for local travel advisories and guidelines related to testing and quarantining
- 7) If hosting, clean frequently touched surfaces
- 8) Wash your hands
- 9) Eat/celebrate outside if possible

**More information is available [here](#)**

# Prepare Safe Workflows and Stock Sufficient PPE

---

- ❖ Ensure your practice has 30 days of PPE immediately available
- ❖ Consult usual suppliers and order PPE well in advance of anticipated need
  - There may be PPE shortages in the future
- ❖ Continue using PPE according to CDC guidelines
- ❖ Ensure safe workflows for all patients, particularly vulnerable patients

# Personal Protective Equipment (PPE) Sources and Requests

---

- ❖ Practices should initially request PPE through their usual vendors
- ❖ Practices should make their PPE requests through their local health departments
- ❖ Maryland PPE Manufacturers List – next slide
- ❖ [National and international PPE supplier list](#)
- ❖ [PPE request form](#)

# Personal Protective Equipment (PPE) Sources and Requests

---

- ❖ Increasing Maryland's supply of PPE – one of the 4 building blocks on the Road to Recovery
- ❖ Maryland has launched the [Maryland Manufacturing Network Supplier Portal](#), an online platform that helps connect Maryland suppliers with buyers in need of critical resources
- ❖ For additional business resources during Covid-19, visit [businessexpress.maryland.gov/coronavirus](https://businessexpress.maryland.gov/coronavirus)
- ❖ Providers may also request PPE from the non-profit [‘Get Us PPE’](#)

# Governor Hogan's 11/12 Covid Announcement

---

- ❖ Announced \$70 million of investments to combat Covid
  - \$20 million for funding for PPE to build state's strategic stockpile
  - \$15 million for unemployment insurance measures
  - \$10 million for renter relief
  - \$10 million to accelerate mass vaccination planning
  - \$10 million for additional support for area food banks
  - \$2 million for supplemental resources for foster care
  - \$2 million for SNAP and energy assistance administration
  - \$1 million for a wastewater testing initiative

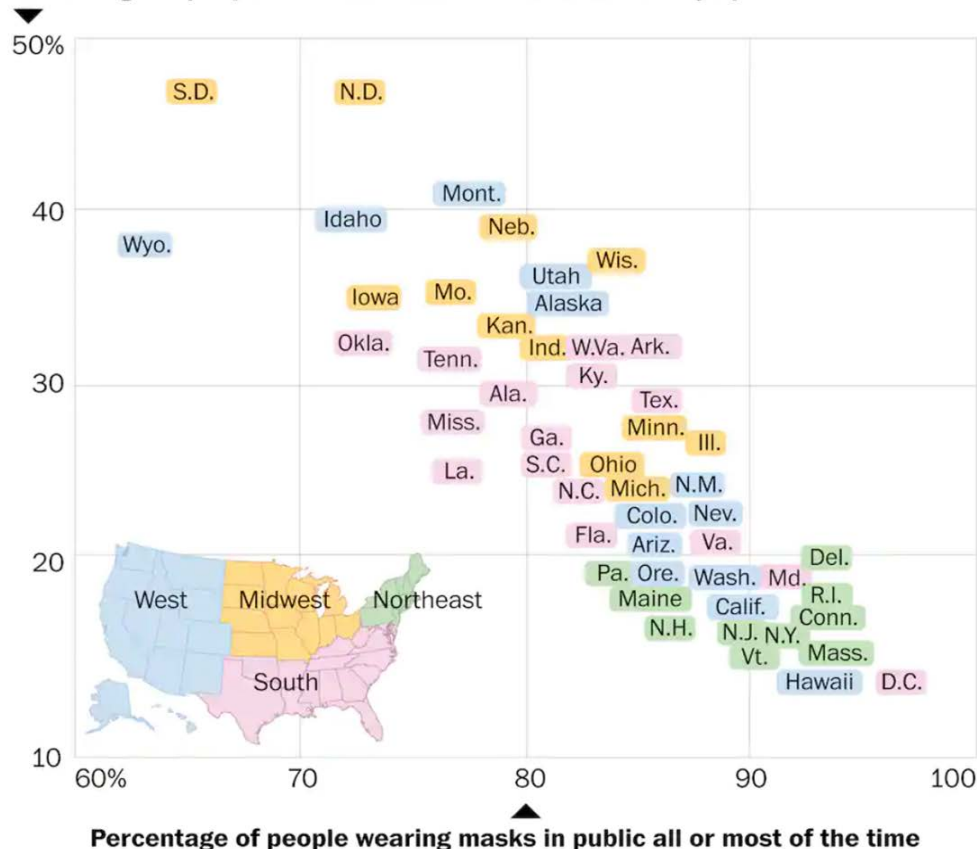


# Masks and Distancing Remain Critical

## Masking up

Fewer covid-19 symptoms reported in states with higher rates of mask use.

Percentage of people who know someone with covid-19 symptoms



Data as of Oct. 19

Source: Delphi CovidCast, Carnegie Mellon University

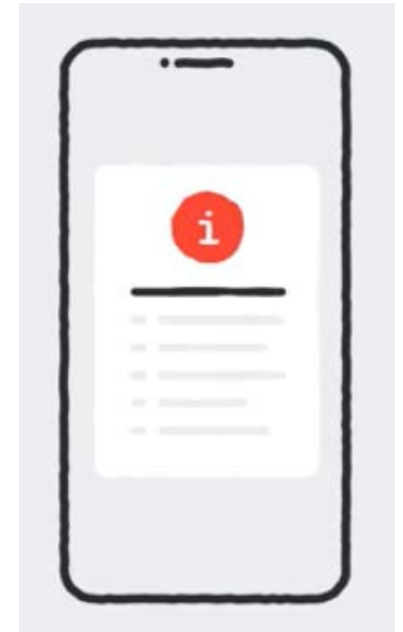
THE WASHINGTON POST

## ❖ IHME model:

- Universal mask use *saves 129,574 lives* before Feb 2021
- 85% mask use *saves 95,814 lives* before Feb 2021

# MD COVID Alert App

- ❖ New opt-in cell phone app that notifies users if they have been exposed to somebody who is Covid-19 positive
- ❖ Mimics CDC close contact definition (6-feet or less for >15 minutes) with bluetooth
- ❖ Individuals who receive exposure notifications:
  - Receive advice to get tested
  - Receive information about possible exposure date
  - COVID-19 positive users may receive a call from a contact tracer
- ❖ More information is available [here](#)



# Provider/Patient Mental Health Resources

---

## ❖ Providers

- “Helping the Helpers and Those They Serve,” a [webinar series](#) from the Maryland Department of Health Behavioral Health Administration and MedChi (on the 2<sup>nd</sup> and 4<sup>th</sup> Thursdays of every month starting 11/12/2020)
- [Heroes Health Initiative](#)

## ❖ Patients

- [Ask Suicide-Screening Questions toolkit](#)
- CDC [list of resources](#) for coping with stress

# Health Equity Resources

---

- ❖ [Maryland Department of Health Office of Minority Health and Health Disparities](#) (MHHD)
- ❖ Maryland Department of Health Minority Outreach and Technical Assistance Program [overview](#)
- ❖ MHHD fiscal year 2020 minority outreach and technical assistance [program information](#)
- ❖ [Description](#) of the term “health disparity”
- ❖ [Implicit bias test](#)
- ❖ “Hundreds of Days of Action as a Start to Address Hundreds of Years of Inequality” – New England Journal of Medicine [article](#) by Maulik Joshi, DrPH
- ❖ “Discussion Draft of the Preliminary Framework for Equitable Allocation of COVID-19 Vaccine” – [discussion draft](#) for public comment by Committee on Equitable Allocation of Vaccine for the Novel Coronavirus, The National Academies of Science, Engineering, Medicine

# Telehealth Resources

---

- ❖ [Maryland Health Care Commission Telehealth](#)
- ❖ [Maryland Health Care Commission Telehealth Readiness Assessment Tool](#)
- ❖ [U.S. Department of Health and Human Services Health Insurance Portability and Accountability Act \(HIPAA\) for Professionals](#)
- ❖ [American Telehealth Association](#)
- ❖ [Maryland Telehealth Alliance](#)
- ❖ [National Consortium of Telehealth Resource Centers](#)

# Help Your Patients Get Health Coverage

---

Maryland Health Connection, the state's health insurance marketplace, has a Coronavirus Emergency Special Enrollment Period until December 15 for uninsured Marylanders. All plans on Maryland Health Connection cover testing and treatment of Covid-19.

## ❖ How to enroll

- Enroll online at [MarylandHealthConnection.gov](https://MarylandHealthConnection.gov)
- Call 1-855-642-8572. Deaf and hard of hearing use Relay service. Help is available in 200 languages.
- Download the free “Enroll MHC” mobile app to enroll on a phone/tablet.
- Navigators throughout the state can answer questions and enroll consumers by phone.

# Support for Patients at Home

---

## ❖ Food

- Meals on Wheels

## ❖ Caregivers

- Visiting nurses and caregivers

## ❖ Emotional support

- Support from family
- Phone calls and videochat to fight loneliness
- MD Department of Aging [Senior Call Check Program](#)

# Staying Current - Sources

---

- ❖ [CDC](#)
- ❖ [MDH Covid-19 information page](#)
- ❖ [MDPCP Covid-19 webpage](#)
- ❖ Local Health Departments
- ❖ [CONNECT](#)
- ❖ Clinician Letters
- ❖ Multiple Resource Links in Appendix



# MedChi/CareFirst/Backline Grant

CareFirst BlueCross BlueShield (CareFirst) and the Maryland State Medical Society (MedChi) launched a grant program that will equip additional Maryland physicians with the technology they need to provide needed virtual care during the Covid-19 pandemic and beyond

## Eligibility Requirements

- The medical practice and medical license are in Maryland
- The medical practice is a private, independent group of five or fewer physicians
- The practice enrolls in Backline after March 1, 2020 as the result of the Covid-19 crisis
- MedChi has confirmed the practice's enrollment with DrFirst
- Enrollment in Backline occurs before December 31, 2020

## Application Steps

Can be completed in less than 5 minutes

- Complete the application linked [here](#)
- Email completed application to [amullin@medchi.org](mailto:amullin@medchi.org)
- For questions, email or call Andrea Mullin at [amullin@medchi.org](mailto:amullin@medchi.org) or 800-492-1056 x3340

## Grant Amount

\$300 per eligible physician



# Food Resources

---

❖ Nutrition: Inform patients that children can receive three free meals/day at sites listed on:

➤ [Maryland Summer Meals](#)

➤ [Montgomery County](#)

➤ [Prince Georges County](#)

➤ [Charles County](#)

➤ [Frederick County](#)

[Howard County](#)

[Anne Arundel County](#)

[St. Mary's County](#)

[Harford County](#)

[Calvert County](#)

❖ Free meals available from 42 rec centers in Baltimore

➤ Call 311 for locations and to schedule pickup time

# Resources for Specific Groups

---

- ❖ Community- and Faith-Based Organizations  
(<https://www.cdc.gov/coronavirus/2019-ncov/community/guidance-community-faith-organizations.html>)
- ❖ Mass Gatherings and Large Community Events  
(<https://www.cdc.gov/coronavirus/2019-ncov/community/mass-gatherings-ready-for-covid-19.html>)
- ❖ Non-Pharmaceutical Interventions for Specific Groups  
(<https://www.cdc.gov/nonpharmaceutical-interventions/index.html>)

# Resources and References

---

- ❖ Maryland Department of Health Coronavirus Website (<https://coronavirus.maryland.gov>)
- ❖ CDC Coronavirus Website (<https://www.cdc.gov/coronavirus/2019-nCoV/index.html>)
- ❖ CDC National data on Covid-19 infection and mortality (<https://www.cdc.gov/coronavirus/2019-ncov/cases-updates/cases-in-us.html>)
- ❖ CDC Interim Guidance for Homes and Communities (<https://www.cdc.gov/coronavirus/2019-ncov/hcp/guidance-prevent-spread.html>)
- ❖ CDC Interim Guidance for Businesses (<https://www.cdc.gov/coronavirus/2019-ncov/specific-groups/guidance-business-response.html>)
- ❖ CDC Interim Guidance for Childcare and Schools (<https://www.cdc.gov/coronavirus/2019-ncov/specific-groups/guidance-for-schools.html>)
- ❖ CDC Travel Website (<https://wwwnc.cdc.gov/travel/>)