



CRISP

*Connecting Physicians With Technology
to Improve Patient Care in Maryland*

7160 Columbia Gateway Drive,
Suite 230
Columbia, Maryland 21046
1.877.95.CRISP (27477)
www.crisphealth.org

Chesapeake Regional Information System for Our Patients

CRISP Update

HIE Services

October 2014



What is CRISP?

Chesapeake Regional Information System for Our Patients

CRISP is a non-profit health information exchange, or HIE, organization serving Maryland and the District of Columbia.

Health Information Exchange allows clinical information to move electronically among disparate health information systems. The goal of HIE is to deliver the right health information to the right place at the right time—providing safer, more timely, efficient, effective, equitable, patient-centered care.

CRISP's Mission: To advance the health and wellness of our patients by deploying health information technology solutions adopted through cooperation and collaboration.





CRISP Services for Providers

Chesapeake Regional Information System for Our Patients

1. **Maryland Prescription Drug Monitoring Program**

- Monitor the prescribing and dispensing of drugs that contain controlled dangerous substances

2. **Encounter Notification Service (ENS)**

- Be notified in real time about patient visits to the hospital

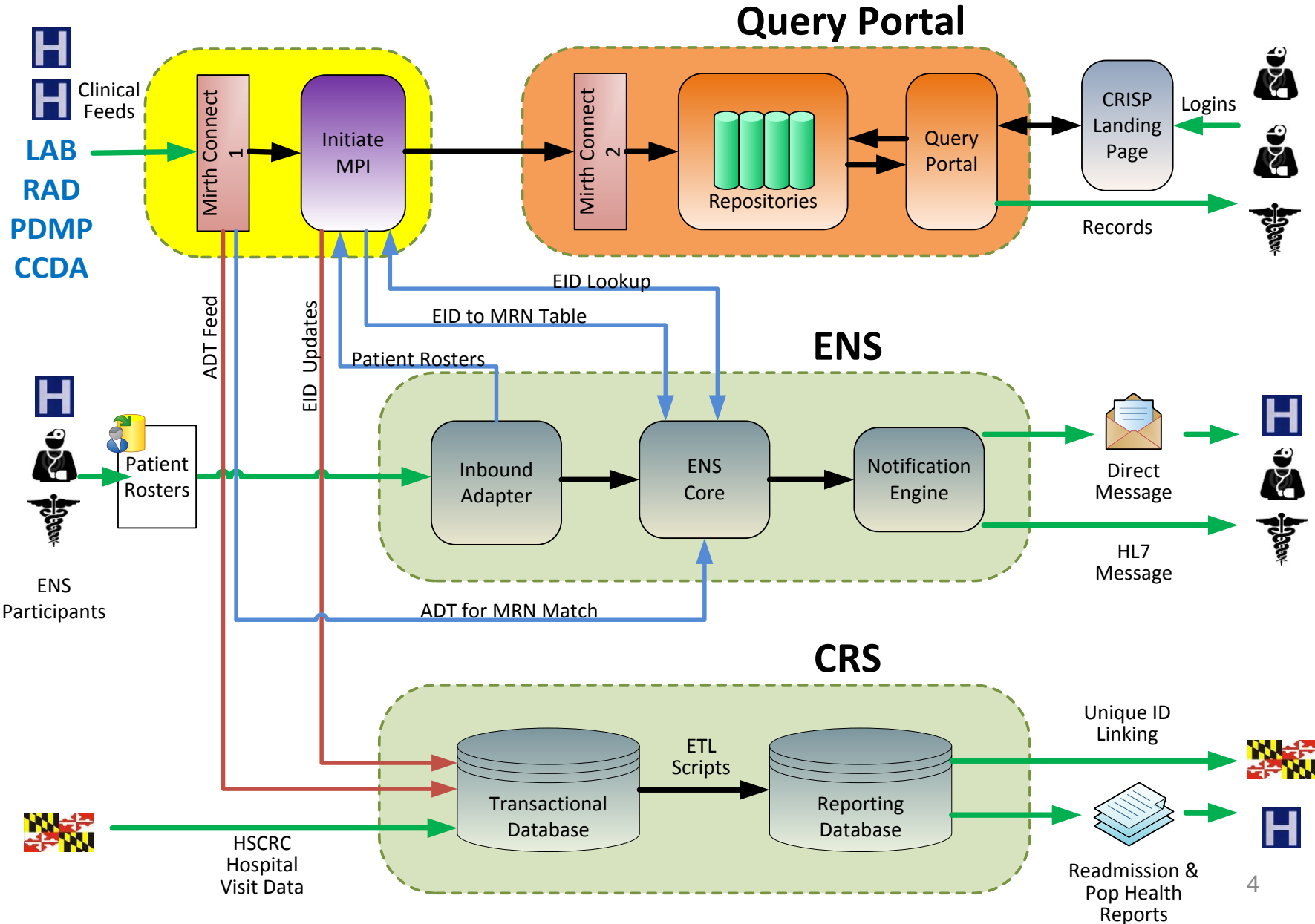
3. **Query Portal**

- Search for your patients' prior hospital and medication records

4. **Direct Secure Messaging**

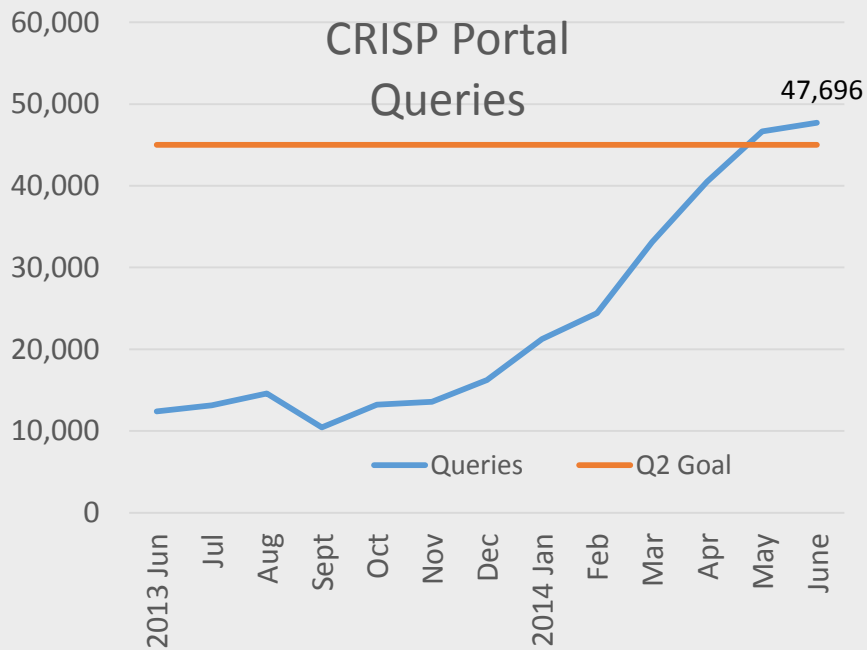
- Use secure email instead of fax/phone for referrals and other care coordination

CRISP Infrastructure

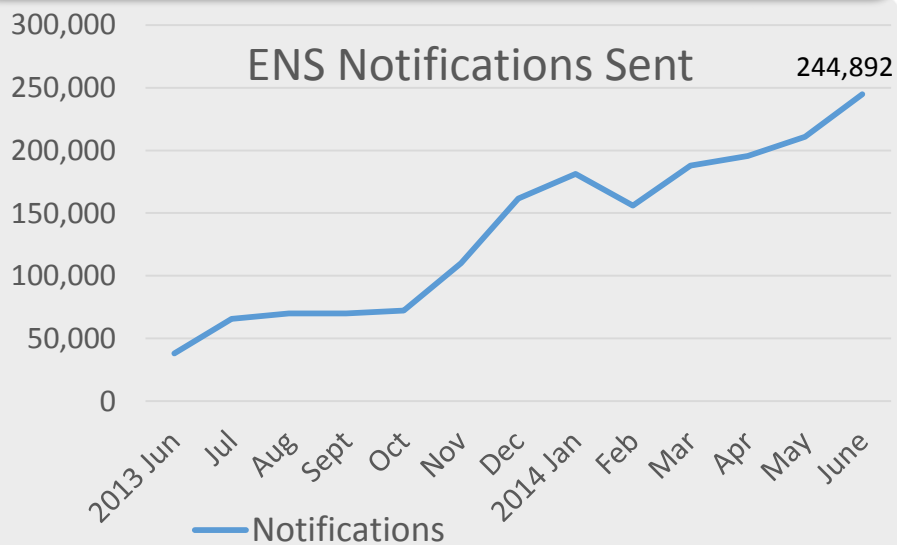


CRISP Key Performance Indicators

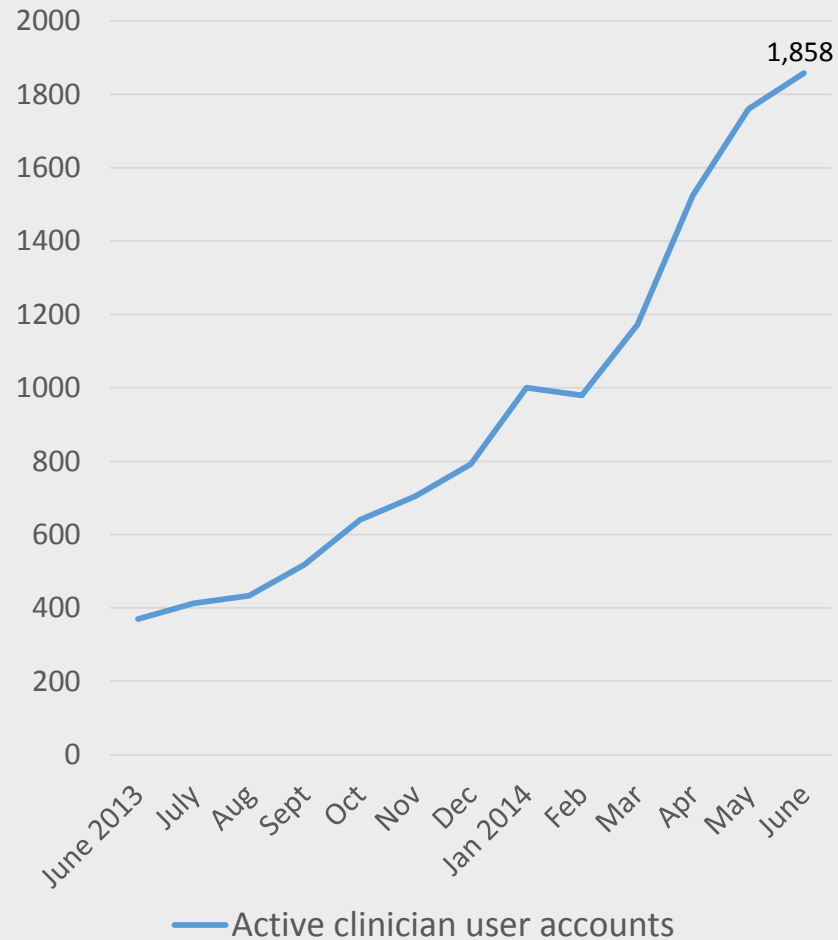
CRISP Portal Queries



ENS Notifications Sent



CRISP Portal Clinician Users

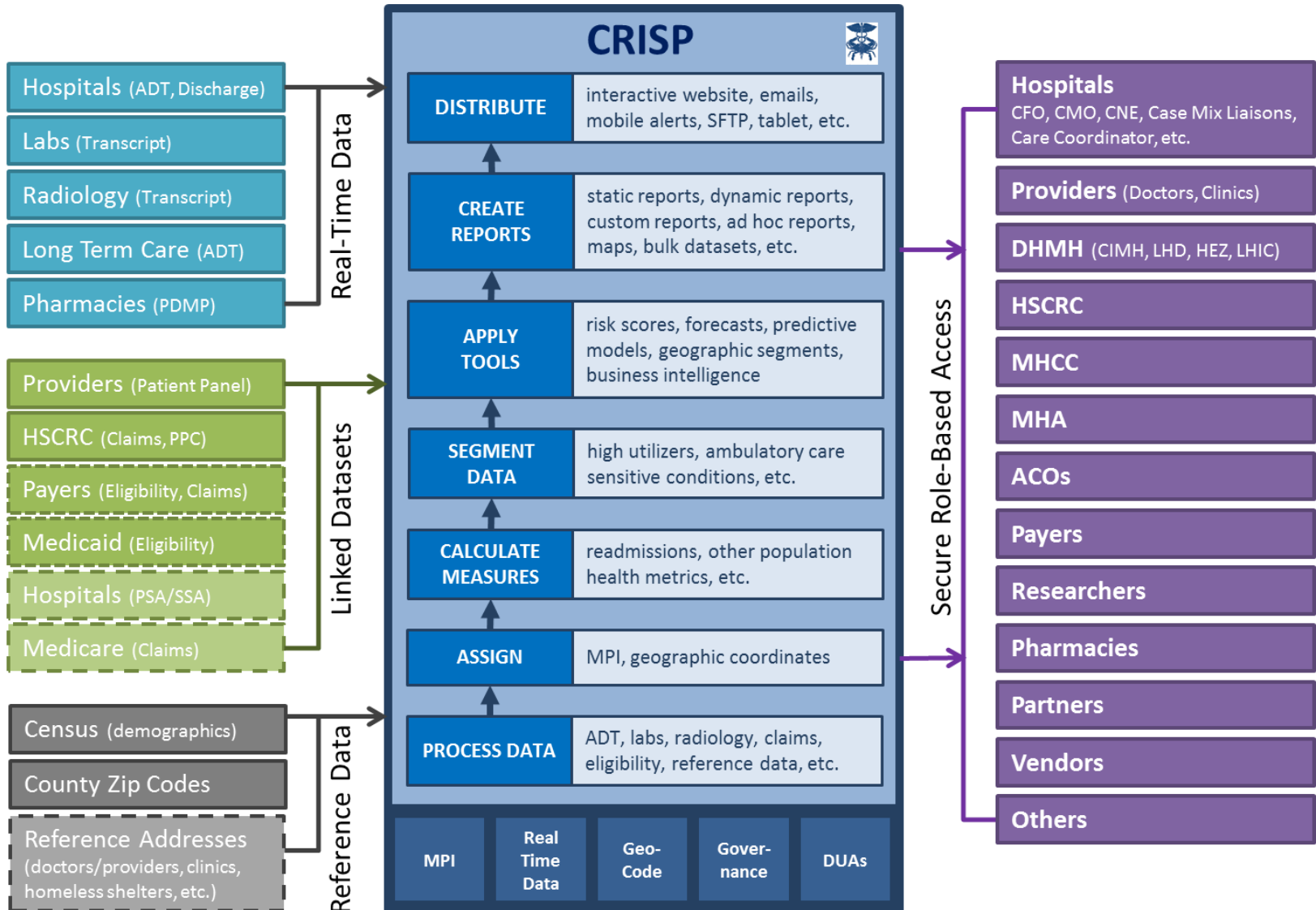


*lower Active User number for Feb is due to periodic deactivation of users who had not logged-in for 60 days.



Maryland Population Health Utility

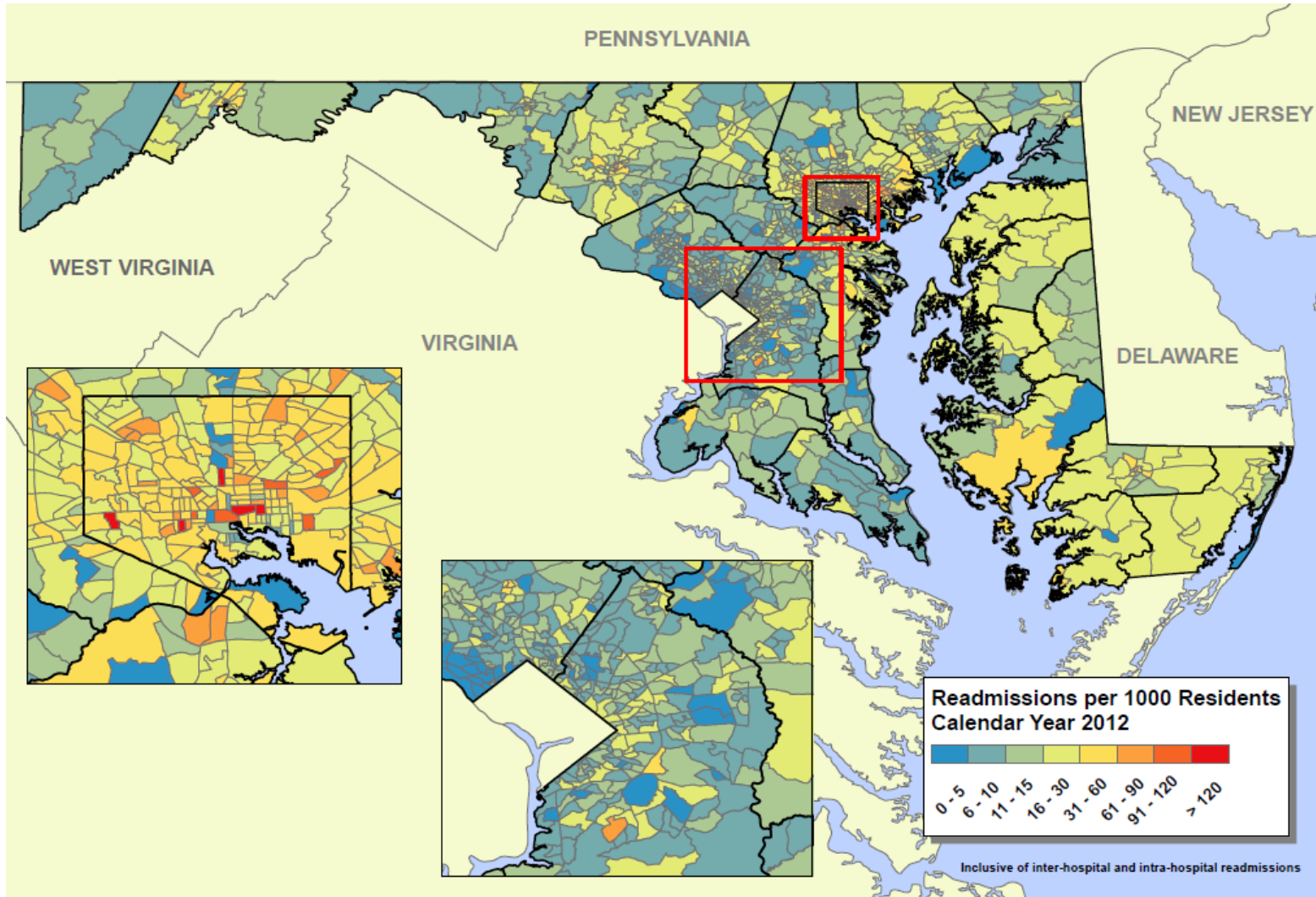
Chesapeake Regional Information System for Our Patients





Utilization by Census Tract Map

Chesapeake Regional Information System for Our Patients





Analytics & Reporting

Chesapeake Regional Information System for Our Patients

Inpatient Hospital Utilization Statewide

	Jan-14	Feb-14	Mar-14	Apr-14	May-14	All Payer Jan to May	Medicare Jan to May
IP Total Discharges	56,507	50,839	55,024	53,276	55,266	270,912	100,497
IP Total Discharges with CRISP ID	56,247	50,608	54,766	53,011	55,008	269,640	99,639
IP Eligible Discharges	53,426	48,085	52,047	50,420	52,327	256,305	92,695
IP Readmits	6,625	5,935	6,284	6,217	6,330	31,391	16,355
IP Readmit Intra Hospital	4,561	4,040	4,356	4,280	4,349	21,586	11,625
IP Readmit Inter Hospital	2,064	1,895	1,928	1,937	1,981	9,805	4,730
Unadjusted IP Readmit Rate	12.4%	12.3%	12.1%	12.3%	12.1%	12.2%	17.6%
Unadjusted IP Intra Readmit Rate	8.5%	8.4%	8.4%	8.5%	8.3%	8.4%	12.5%
Unadjusted IP Inter Readmit Rate	3.9%	3.9%	3.7%	3.8%	3.8%	3.8%	5.1%

Inpatient Hospital Utilization in Northern Border

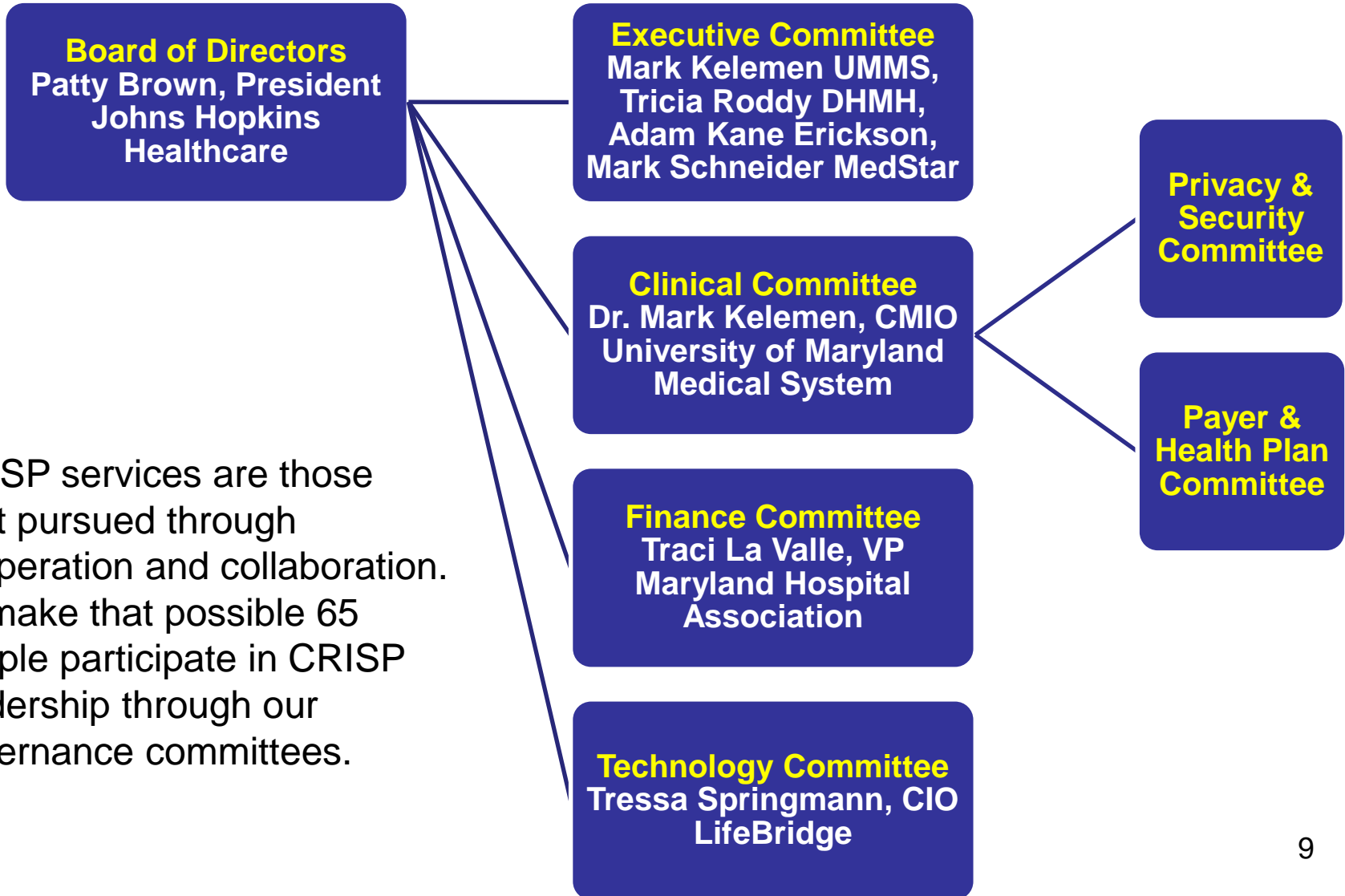
	Jan-14	Feb-14	Mar-14	Apr-14	May-14	All Payer Jan to May	Medicare Jan to May
IP Total Discharges	6,089	5,358	6,054	5,840	5,873	29,214	12,377
IP Total Discharges with CRISP ID	6,076	5,348	6,046	5,834	5,869	29,173	12,369
IP Eligible Discharges	5,703	5,028	5,697	5,521	5,541	27,490	11,422
IP Readmits	638	553	656	614	605	3,066	1,853
IP Readmit Intra Hospital	556	479	590	524	539	2,688	1,677
IP Readmit Inter Hospital	82	74	66	90	66	378	176
Unadjusted IP Readmit Rate	11.2%	11.0%	11.5%	11.1%	10.9%	11.2%	16.2%
Unadjusted IP Intra Readmit Rate	9.7%	9.5%	10.4%	9.5%	9.7%	9.8%	14.7%
Unadjusted IP Inter Readmit Rate	1.4%	1.5%	1.2%	1.6%	1.2%	1.4%	1.5%



CRISP Governance

<http://crisphealth.org/ABOUT/Governance-and-Leadership>

Chesapeake Regional Information System for Our Patients



CRISP services are those best pursued through cooperation and collaboration. To make that possible 65 people participate in CRISP leadership through our governance committees.