



Maryland Consortium on Coordinated Community Supports Best Practices Subcommittee

**Dr. John Campo and Superintendent Derek Simmons
Co-Chairs**

November 16, 2022

Objectives for Today's Meeting

- Discuss Subcommittee mission and deliverables
- Re-cap other Subcommittee work
- Presentation from National Center for School Mental Health on Evidence-Based Best Practices

Best Practices Subcommittee Membership

Members: John Campo (co-chair), Derek Simmons (co-chair), Chrissy Bartz, Gloria Brown Burnett, Mary Gable, Senator Katie Fry Hester, D'Andrea Jacobs, Gail Martin, and Michael Trader

Statutory Responsibilities (Best Practices Subcommittee)

1. Provide expertise in developing best practices in the **delivery of behavioral health and wraparound services.**
2. Develop best practices for **positive classroom environment.**
3. Use accountability metrics to develop best practices to **deliver supports and services** and **maximize funding.** (with Data and Framework Subcommittees)
4. Provide technical assistance to local school systems to support **positive classroom environments** and **close achievement gaps.** (with Outreach Subcommittee)

Best Practices Subcommittee

Mission – November 2022-February 2023

For the remainder of calendar year 2022 and the beginning of calendar year 2023, the primary mission of the Best Practices Subcommittee is to develop a list of best practices for the delivery of student behavioral health services. This list will be incorporated in the first Coordinated Community Supports Partnership Call for Proposals (RFP), which will be issued during the first quarter of calendar year 2023.

Key Activities

November 2022 – February 2023

1. Hold Subcommittee meetings.
2. Develop consensus on a number of evidence-based best practices for the delivery of student behavioral health services at all three tiers (universal, targeted, intensive) of the Multi-Tiered System of Supports (MTSS).
3. Study how support and Technical Assistance provided at the statewide/Consortium level could support the implementation or expansion of these Best Practices in individual jurisdictions that use them.
4. Coordinate with the Framework and Data Subcommittees.
5. Provide updates at full Consortium meetings.

Key Deliverables to be produced by February 2023

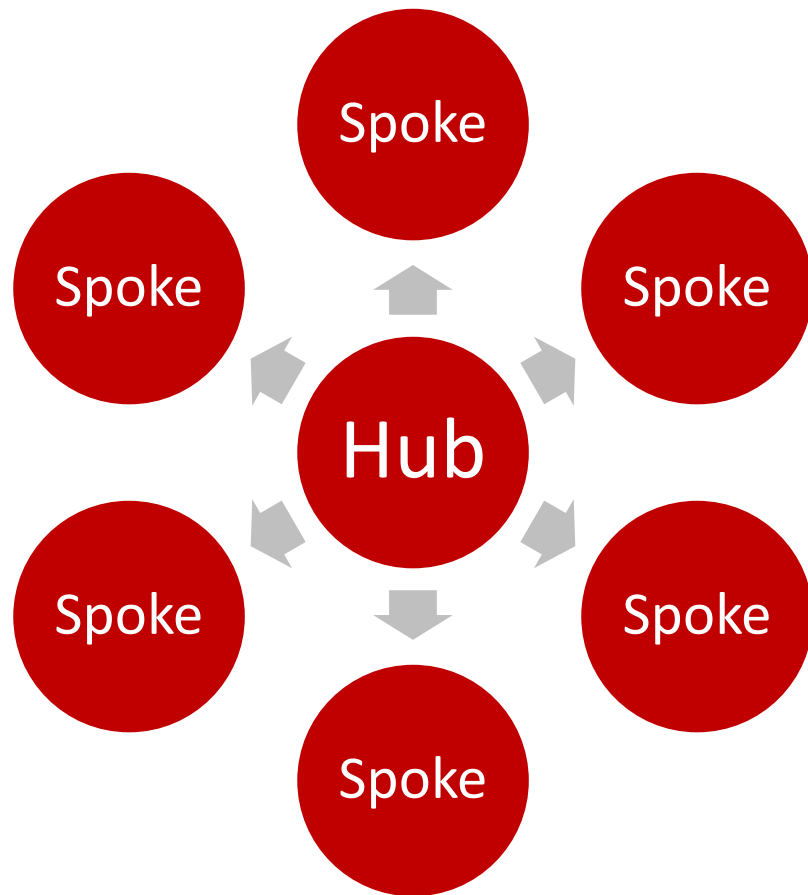
- Recommendations for a number of evidence-based best practices for the delivery of student behavioral health services at all three tiers of the MTSS (universal, targeted, intensive) that could be incorporated in the Consortium's first RFP.
- Recommendations on how the Consortium could help coordinate and support implementation of these best practices statewide.

Discuss how much flexibility versus requirements to provide grantees/Spokes.

Meeting Schedule

- **TODAY – Wednesday, November 16, 10:00-11:00 am**
- **Wednesday, December 7, 2:00-3:00 pm**
- **Additional meetings to be determined**

Re-Cap: Hub and Spoke model



At full implementation, Hub and Spoke:

- Collective Impact model.
- Hub is the Community Supports Partnership/lead grantee; “backbone” of Collective Impact model. New or existing organization.
- Spokes are the service providers/sub-grantees; “partners” of Collective Impact model.
- Hubs coordinate the activities of spokes, manage financial and data responsibilities.
- Close coordination and MOU with the schools.
- Geographic -- Can be at jurisdiction-level, sub-jurisdiction or multi-jurisdiction.

Re-Cap: First RFP

The first RFP will support BOTH capacity building/planning AND service delivery/expansion/enhancement.

Year 1 applicants/grantees should include both:

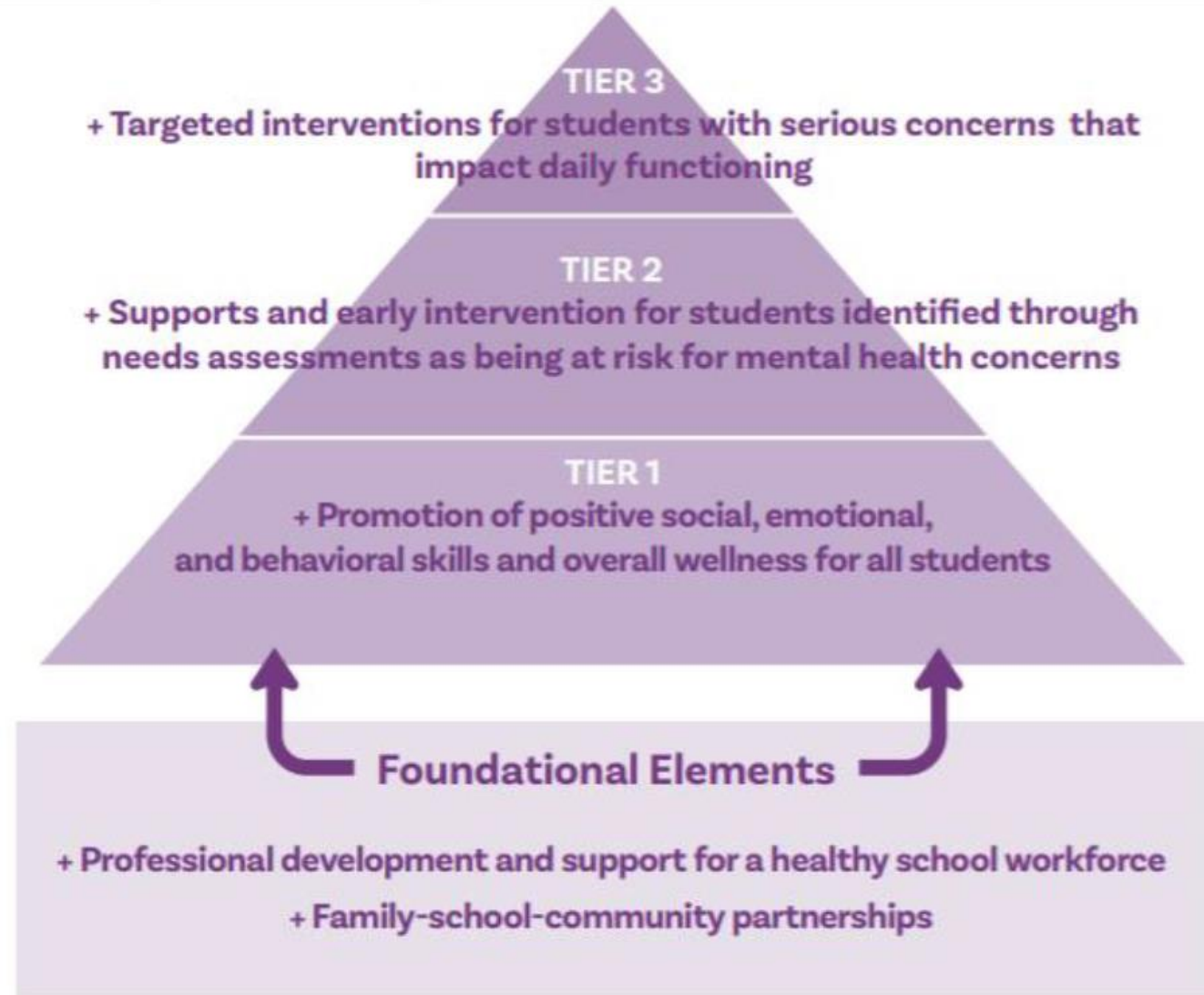
- A. Organizations that could become Partnerships (hubs/backbones) – grant dollars support planning grants and technical assistance
- B. Service providers (spokes) – grant dollars support access to services

Some “spokes” might become future “hubs” with some technical assistance, even as they deliver services.

Re-Cap: Considerations for first RFP

	Core Competencies of a Hub/Backbone	Core Competencies of a Spoke for Year 1
Service Delivery	<ul style="list-style-type: none"> • all MTSS tiers • ensure fidelity to best practices • coordinate many partners 	<ul style="list-style-type: none"> • one or more tiers • utilize best practices • ability/commitment to partner with other organizations in the future
Fiduciary	<ul style="list-style-type: none"> • receipt of grant dollars • accountability for grant funds • maximize third party billing including Medicaid if possible • leverage funds from other sources • distribute funds to Spokes 	<ul style="list-style-type: none"> • receipt of grant dollars • accountability for grant funds • maximize third party billing including Medicaid, if possible • leverage funds from other sources, if possible
Data	<ul style="list-style-type: none"> • collect data from Spokes • report data to Consortium and CHRC 	<ul style="list-style-type: none"> • collect and report data required by the Consortium and the CHRC

Best Practices Subcommittee



The Subcommittee plans to develop a list of best practices for the delivery of services at each level of the Multi Tiered System of Supports.

Proposed Overall Goals and Indicators

Goal	Key Indicators
1. Expand access to services	1. Expanded screenings
	2. Increased care delivery
2. Improve student wellbeing	3. Improvements in school-wide mental health (Tier 1/all)
	4. Improvements in mental health for individual students receiving Tier 2 and 3 supports (targeted students)
3. Improve engagement in education	5. Reduced absenteeism
	6. Reduction in exclusionary discipline events
	7. Improved classroom environments