



Maryland Consortium on Coordinated Community Supports

Data Collection/Analysis & Program Evaluation Subcommittee

Larry Epp, Chair

October 27, 2022

Re-Cap: Mission

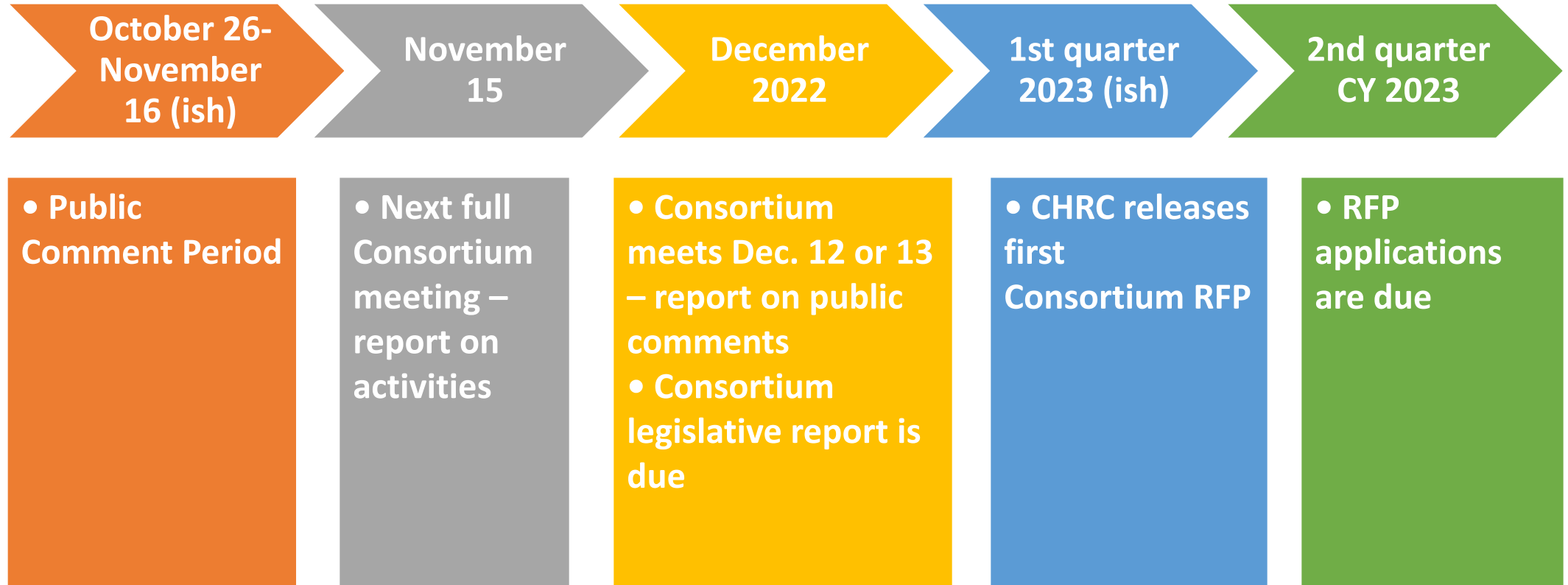
For the remainder of calendar year 2022, the primary mission of the Data Subcommittee is to provide data expertise to support the development of the first Coordinated Community Supports Partnership Call for Proposals (RFP), which will be issued during the first quarter of calendar year 2023.

Re-Cap: Key Deliverables

to be produced by December 2022

1. Summary of public comments received on key questions.
2. Recommendations for key existing data measures and sources that could be used to calculate a baseline.
3. Recommendations for several key standardized data metrics that should be collected by all future grantees.
4. Recommendations for key data measures to quantify the impact of the Consortium and measure the overall success of initiative.

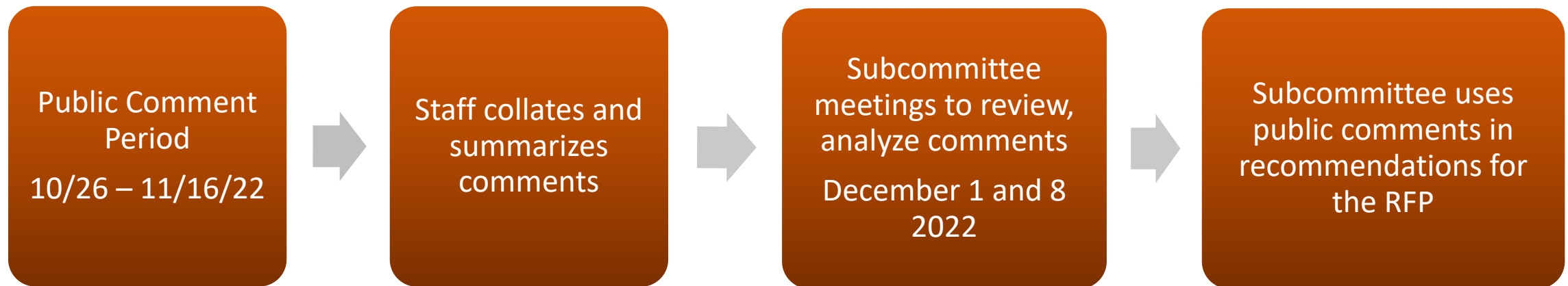
Consortium Timeline (Provisional)



Process for Public Comment Period

- 8 Framework questions + 4 Data Subcommittee questions
- 12 total questions have been made into a single Public Comment form.
 - Respondents may answer some or all questions.
 - Respondents will identify themselves and their organizations.
- Outreach Subcommittee met on October 24.
- Public Comment form will be emailed to stakeholders – please share it! Also posted on Consortium [website](#).
- Staff will receive all responses, sort, collate, and summarize.
- Responses will be discussed by the Subcommittees at meetings on **12/1** and **12/8**.

Process for Public Comment Period (visual)



Public Comment Period

Please think about individuals YOU can invite to submit comments!

Re-Cap: Data Workgroup Presentations

MSDE Data Sets

- attendance, discipline, school survey, academic measures, teacher retention

SHAPE System

- school mental health infrastructure and quality (not student-level data)

What data do we need? (1 of 3)

- 1. Data to measure overall program effectiveness. Some metrics required by law. Macro-level data the Consortium will report to the General Assembly.**
 - Process: number of jurisdictions with programs, overall number of students receiving services, overall expansion of services offered
 - Outcomes: reductions in absenteeism, exclusionary disciplinary events, interactions with youth-serving agencies, improvements in psychosocial assessments of students receiving intensive services, improvements in school climate
- Other data sets we might consider for this purpose? (vital statistics, YRBS, etc)

What data do we need? (2 of 3)

2. **Data that grantees will be required to report to the Consortium to demonstrate the effectiveness of their programs.**
 - Process: number of students receiving services, expansion of services offered, number of students screened, etc.
 - Outcomes: improvements in psychosocial assessments of students receiving intensive services, OTHERS TO DISCUSS

What data do we need? (3 of 3)

3. Data that grantees will use to measure individual student progress and make treatment decisions.

- Process: number of students receiving services, expansion of services offered, number of students screened, OTHERS TO DISCUSS
 - Outcomes: TO DISCUSS
-
- A number of data platforms exist for this purpose including Greenspace, bhworks, MIRAH, etc.

Data Subcommittee Meeting Schedule

- Thursday, November 3, 12:00-1:00 pm – presentation from Shannon Hall or BHA
- Thursday, November 10, 12:00-1:00 pm – agenda TBD
- Full Consortium meeting: Tuesday, November 15, 2022
- Thursday, November 17, 12:00-1:00 pm – agenda TBD
- Thursday, December 1, 12:00-1:00 pm – review public comment responses
- Thursday, December 8, 12:00-1:00 pm – review public comment responses
- Full Consortium meeting: December 12 or 13
- Thursday, December 15, 12:00-1:00 pm – agenda TBD

Universal Screening - discussion



Possible future presentations

- **Data platforms** – measurement based care, student-level outcomes (Elizabeth Connors, Shannon Hall, Phil Leaf)
- **BHA data** - Youth Risk Behavior Surveillance System, vital statistics data (deaths of despair, etc), hospital claims data, ACEs data
- **Substance Use Disorder programs** – Robin Rickard, OOCC
- **Measuring risk** – Robert Balfanz
- **Annie E. Casey** report researchers
- Others??