

Health Home Monthly Report

Office of Health Services
Policy & Compliance, Behavioral Health Division
August 2014 Report

EXECUTIVE SUMMARY

As of August 31st, 2014, the Department has received 81 Health Home site applications and approved 60, with eight pending, one withdrawn, and ten denied¹. Approved Health Home sites include 46 Psychiatric Rehabilitation Programs (PRP), ten Mobile Treatment providers (MT), and four opioid treatment programs (OTP). These programs span 19 of Maryland's 23 counties and have a cumulative enrollment of 4,149 participants. Total claims paid from the program's launch in October 2013 through August 2014 equal approximately \$1.8 million. The Department performed its first Health Home Site Visit in August to provide more targeted technical assistance to Health Home providers. The Site Visit Team and Health Home Advisory Committee will continue efforts to strengthen the Department's technical assistance strategy.

CONTINUED TECHNICAL ASSISTANCE

In August, the Health Home Site Visit Team performed its first on-site technical assistance site visit to provide targeted assistance. The site visit process serves as opportunity to inform the Department of provider strengths and challenges with implementing their Health Home programs, while providing peer to peer technical assistance. The Site Visit Team will continue to visit active Health Home providers as well as interested provider applicants.

The newly-formed Health Home Advisory Committee has scheduled their second meeting for early October. This session will focus on the continued development of a technical assistance strategy to strengthen providers' Health Home implementation. The Committee is working collaboratively with the Department to develop resources for provider trainings and outreach. The Advisory Committee and Site Visit Team will continue to serve as an additional resource to the Health Home provider community through advocacy and providing technical assistance.

BY THE NUMBERS

The following figures represent the Health Home program's status as of August 31st, 2014.

Provider Summary	
Site Applications Received	81
Approved Sites (Total)	60
Psychiatric Rehabilitation Programs ²	46
Mobile Treatment	10
Opioid Treatment Program	4
Pending Site Applications	8
Denied or Withdrawn Site Applications	13

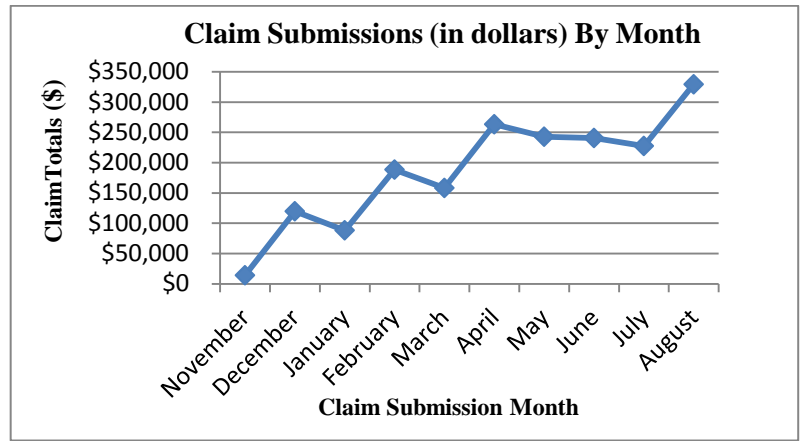
Participant Summary	
Total Participants	4,149
Adult Participants	3,825
Youth Participants ³	324
Participation by Provider Type	
Psychiatric Rehabilitation Program	3,324
Mobile Treatment	343
Opioid Treatment Program	482

¹ Applications were denied for lack of response to information requests and inability to meet program requirements

² Thirty-two PRP Health Homes serve adults only, 4 serve only children, and 10 serve both children and adults

³ Age among youth participants ranges from 5 to 17 years old

Claims Summary	
August	\$329,217.44
July	\$227,478.12
June	\$240,643.49
May	\$242,725.85
April	\$263,290.81
March	\$158,192.00
February	\$188,497.91
January	\$88,290.91
December	\$119,731.57
November	\$14,138.41
TOTAL⁴	\$1,872,206.51



GEOGRAPHIC DISTRIBUTION

The [Maryland Health Homes Map](#) displays all approved Health Home sites by name and provider type, also listed on the following page. The table below lists distribution by county:

Allegany	0	Dorchester	2	Queen Anne's	1
Anne Arundel	3	Frederick	1	Somerset	1
Baltimore City	19	Garrett	0	St. Mary's	0
Baltimore County	9	Harford	5	Talbot	1
Calvert	0	Howard	1	Washington	1
Caroline	1	Kent	1	Wicomico	4
Carroll	1	Montgomery	4	Worchester	1
Cecil	1	Prince George's	3	TOTAL	60

APPROVED HEALTH HOME SITES as of August 31st, 2014

Health Home contact information is available: [here](#)

	Provider	Address	Provider Type*	County
1	All Walks of Life, LLC	2510 St. Paul Street, Baltimore, MD 21218	PRP (both)	Baltimore City
2	Alliance, Inc	9201 Philadelphia Road, Baltimore, MD 21237	PRP (adult)	Baltimore County
3	Alliance, Inc	234 S. Broadway Street, Baltimore, MD 21231	PRP (adult)	Baltimore City
4	Alliance, Inc	4510 Wharf Point Court, Belcamp, MD 21017	PRP (adult)	Harford
5	Alliance, Inc	15 S. Parke Street, Aberdeen, MD 21001	MT	Harford
6	Arundel Lodge	2600 Solomons Island Rd, Edgewater, MD 21037	PRP (adult)	Anne Arundel
7	Care Connection	4419 Falls Road, Baltimore, MD 21201	PRP (adult)	Baltimore City
8	Catholic Charities and Family Services	2300 Dulaney Valley Rd Timonium, MD 21093	PRP (child)	Baltimore County
9	Catholic Charities and Family Services	2700 Washington Ave. Baltimore, MD 21227	PRP (child)	Baltimore City

⁴ Summation of monthly totals for claims paid since October 2013 launch, with claim submissions beginning November 2013.

	Provider	Address	Provider Type*	County
10	Catholic Charities and Family Services	2600 North Howard Street, Baltimore MD 21218	PRP (child)	Baltimore City
11	Catholic Charities and Family Services	1118 Light St. Suite 200, Baltimore, MD 21230	PRP (child)	Baltimore City
12	Channel Marker, Inc	222 Port Street, Easton, MD 21601	PRP (adult)	Talbot
13	Channel Marker, Inc	420 Dorchester Avenue, Cambridge, MD 21613	PRP (adult)	Dorchester
14	Channel Marker, Inc	508 Kerr Avenue, Denton, MD 21613	PRP (adult)	Caroline
15	Cornerstone Montgomery, Inc	6040 Southport Drive, Bethesda, MD 20814	PRP (adult)	Montgomery
16	Crossroads Community, Inc	120 Banjo Lane Centreville, MD 21617	PRP (both)	Queen Anne's
17	Crossroads Community, Inc	937 Gateway Drive, Chestertown, MD 21620	PRP (both)	Kent
18	Crossroads Community, Inc	404 LeCompte Street, Cambridge, MD 21613	PRP (both)	Dorchester
19	Eastern Avenue Health Solutions	5920 Eastern Avenue, Suite C, Baltimore, MD 21224	OTP	Baltimore City
20	Family Services, Inc	630 East Diamond Ave, Gaithersburg, MD 20877	PRP (adult)	Montgomery
21	Family Services, Inc	5508 Karen Elaine Drive, Ste 824, New Carrollton, MD 20784	PRP (adult)	Prince George's
22	Family Services, Inc	933 Clopper Rd, Apt A3, Gaithersburg, MD 20878	PRP (adult)	Montgomery
23	Go-Getters, Inc	431 E. Main St, Salisbury, MD 21801	PRP (adult)	Wicomico
24	Go-Getters, Inc	406 Trinity Drive, Salisbury, MD 21801	PRP (adult)	Wicomico
25	Go-Getters, Inc	11519 Somerset Avenue, Princess Anne, MD 21853	PRP (adult)	Somerset
26	Go-Getters, Inc	108 West Lehigh Avenue, Salisbury, MD 21801	PRP (adult)	Wicomico
27	Go-Getters, Inc	7033 Worcester Highway, Newark, MD 21841	PRP (adult)	Worcester
28	Haven	4536 Harford Rd, Baltimore, MD 21214	PRP (adult)	Baltimore City
29	Hope Health Systems	6707 Whitestone Road; Suite 106, Woodlawn, MD 21207	PRP (both)	Baltimore County
30	Hope Health Systems	6707 Whitestone Road; Suite 106, Woodlawn, MD 21207	MT	Baltimore County
31	Humanim	6355 Woodside Ct, Columbia, MD 21046	PRP (adult)	Howard
32	Institutes for Behavioral Health Resources	2104 Maryland Avenue Baltimore, MD 21218	OTP	Baltimore City
33	Johns Hopkins Bayview Medical Center	5200 Eastern Avenue, MFL-West Tower Room 428, Baltimore, MD 21224	PRP (adult)	Baltimore City
34	Leading By Example, LLC	8307 Philadelphia Road 1st Floor Rosendale, MD 21237	PRP (both)	Baltimore County
35	Lower Shore Clinic	704 N. Division St. Salisbury, MD 21801	MT	Wicomico
36	Man Alive, Inc	2117 Maryland Ave, Baltimore, MD 21218	OTP	Baltimore City
37	Mosaic Community Services	1931 Greenspring Drive, Timonium, MD, 21093	PRP (adult)	Baltimore County

	Provider	Address	Provider Type*	County
38	Mosaic Community Services	20 Winters Lane, Cantonsville, MD, 21228	PRP (adult)	Baltimore County
39	Mosaic Community Services	288 E. Green Street, Westminster, MD 21157	PRP (adult)	Carroll
40	Mosaic Community Services	2225 North Charles St, Baltimore, MD 21218	PRP (adult)	Baltimore City
41	Mosaic Community Services	2225 North Charles St, Baltimore, MD 21218	MT	Baltimore City
42	People Encouraging People	4201 Primrose Avenue, Baltimore, MD 21215	PRP (adult)	Baltimore City
43	People Encouraging People	4201 Primrose Avenue, Baltimore, MD 21215	MT	Baltimore City
44	People Encouraging People	1506 Woodlawn Drive, Suite C, Gwynn Oak, MD 21207	MT	Baltimore County
45	People Encouraging People	337 Brightseat Road, Suite 210, Hyattsville, MD 20785	MT	Prince George's
46	People Encouraging People	7207 Baltimore-Annapolis Blvd., Suite A, Glen Burnie, MD 21061	MT	Anne Arundel
47	People Encouraging People	255 North Stonestreet Avenue, Rockville, MD 20850	MT	Montgomery
48	Prologue, Inc	3 Milford Mill Road, Pikesville, MD 21208	PRP (adult)	Baltimore County
49	Psychotherapeutic Services	839 Bestgate Dr., Annapolis, MD 21401	PRP (adult)	Anne Arundel
50	Psychotherapeutic Services	337 Brightseat Rd, Landover, MD 20785	PRP (adult)	Prince George's
51	Sinai Hospital Addictions Recovery Program (SHARP)	2401 W. Belvedere Avenue Baltimore, MD 21215	OTP	Baltimore City
52	Therapeutic Living for Families	3425 Sinclair Lane, Baltimore, MD 21213	PRP (both)	Baltimore City
53	Therapeutic Living for Families	1837 1/2 Pulaski Highway, Edgewood, MD 21040	PRP (both)	Harford
54	University of Maryland Medical Center- Harbor City Unlimited	1227 W. Pratt Street Baltimore, MD 21223	PRP (adult)	Baltimore City
55	University of Maryland Medical Center- Program of Assertive Community Treatment	701 W. Pratt Street 5th floor Baltimore, MD 21201	MT	Baltimore City
56	Upper Bay Counseling	200 Booth Street, Elkton, MD 21921	PRP (both)	Cecil
57	Upper Bay Counseling	626 Revolution Street, Havre De Grace, MD 21078	PRP (both)	Harford
58	Way Station	217 W. Patrick St, Frederick, MD, 21701	PRP (adult)	Frederick
59	Way Station	9030 Rte 108, Columbia, MD 21045	PRP (adult)	Howard
60	Way Station	328 N. Potomac St., Hagerstown, MD 21740	PRP (adult)	Washington

*PRP is a Psychiatric Rehabilitation Program serving children, adults, or both; OTP is an Opioid Treatment Program; MT is a Mobile Treatment provider