

# Health Home Monthly Report

Office of Health Services Policy & Compliance Behavioral Health Division  
July 2014 Report

---

## EXECUTIVE SUMMARY

---

As of July 31<sup>st</sup>, 2014, the Department has received 76 Health Home site applications and approved 60, with three pending, one withdrawn, and ten denied<sup>1</sup>. Approved Health Home sites include 46 Psychiatric Rehabilitation Programs (PRP), ten Mobile Treatment providers (MT), and four opioid treatment programs (OTP). These programs span 19 of Maryland's 23 counties and have a cumulative enrollment of 4,000 participants. Total claims paid from the program's launch in October 2013 through July 2014 equal to approximately \$1.5 million. The Department convened initial meetings for the Health Home Advisory Committee and Site Visit Team. These teams will meet at scheduled intervals with the goal of strengthening the Department's efforts in offering technical assistance to Health Home providers and those providers interested in starting a health home.

## TECHNICAL ASSISTANCE CONTINUED

---

In July, the Department met with the Advisory Committee to discuss the committee's role and next steps for providing technical assistance. The Committee is comprised of Health Home providers who represent the Mental Health and Substance Use Disorder community, as well as representation from the Behavioral Health Administration and the Local Health authorities who serve as resources in adult and child and adolescence mental health and substance use disorder. In the initial committee meeting, members identified areas for guidance and training to better assist eligible and approved Health Home providers.

Also in July, the Health Home Site Visit Team met to finalize the on-site technical assistance strategy and to schedule the first technical assistance site visit. The Site Visit team is comprised of Department staff who have experience with adults and children with serious mental illness, serious emotional disturbance, and substance use disorder. The team is also comprised of a Technical Advisor who has practiced as a Health Home provider and will provide peer to peer provider technical assistance.

The Advisory Committee and Site Visit Team will continue to serve as an additional resource to the Health Home provider community through advocacy and providing technical assistance to strengthen providers' understanding of how to effectively deliver health home services

## BY THE NUMBERS

---

The following figures represent the Health Home program's status as of July 31<sup>st</sup>, 2014.

Provider Summary	
Site Applications Received	76
Approved Sites (Total)	60
Psychiatric Rehabilitation Programs <sup>2</sup>	46
Mobile Treatment	10
Opioid Treatment Program	4
Pending Site Applications	3
Denied or Withdrawn Site Applications	13

Participant Summary	
Total Participants	4,000
Adult Participants	3,679
Youth Participants <sup>3</sup>	321
Participation by Provider Type	
Psychiatric Rehabilitation Program	3,213
Mobile Treatment	322
Opioid Treatment Program	465

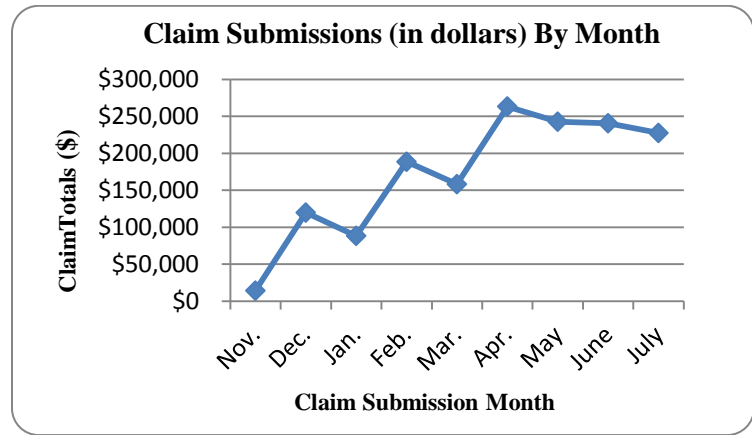
---

<sup>1</sup> Applications were denied for lack of response to information requests and inability to meet program requirements

<sup>2</sup> Thirty-two PRP Health Homes serve adults only, 4 serve only children, and 10 serve both children and adults

<sup>3</sup> Age among youth participants ranges from 5 to 17 years old

Claims Summary	
July	\$227,478.12
June	\$240,643.49
May	\$242,725.85
April	\$263,290.81
March	\$158,192.00
February	\$188,497.91
January	\$88,290.91
December	\$119,731.57
November	\$14,138.41
<b>TOTAL<sup>4</sup></b>	<b>\$1,542,989.07</b>



## GEOGRAPHIC DISTRIBUTION

The [Maryland Health Homes Map](#) displays all approved Health Home sites by name and provider type, also listed on the following page. The table below lists distribution by county:

Allegany	0
Anne Arundel	3
Baltimore City	19
Baltimore County	9
Calvert	0
Caroline	1
Carroll	1
Cecil	1

Dorchester	2
Frederick	1
Garrett	0
Harford	5
Howard	1
Kent	1
Montgomery	4
Prince George's	3

Queen Anne's	1
Somerset	1
St. Mary's	0
Talbot	1
Washington	1
Wicomico	4
Worcester	1
<b>TOTAL</b>	<b>60</b>

## APPROVED HEALTH HOME SITES as of July 31<sup>st</sup>, 2014

Health Home contact information is available: [here](#)

	Provider	Address	Provider Type*	County
1	All Walks of Life, LLC	2510 St. Paul Street, Baltimore, MD 21218	PRP (both)	Baltimore City
2	Alliance, Inc	9201 Philadelphia Road, Baltimore, MD 21237	PRP (adult)	Baltimore County
3	Alliance, Inc	234 S. Broadway Street, Baltimore, MD 21231	PRP (adult)	Baltimore City
4	Alliance, Inc	4510 Wharf Point Court, Belcamp, MD 21017	PRP (adult)	Harford
5	Alliance, Inc	15 S. Parke Street, Aberdeen, MD 21001	MT	Harford
6	Arundel Lodge	2600 Solomons Island Rd, Edgewater, MD 21037	PRP (adult)	Anne Arundel
7	Care Connection	4419 Falls Road, Baltimore, MD 21201	PRP (adult)	Baltimore City
8	Catholic Charities and Family Services	2300 Dulaney Valley Rd Timonium, MD 21093	PRP (child)	Baltimore County
9	Catholic Charities and Family Services	2700 Washington Ave. Baltimore, MD 21227	PRP (child)	Baltimore City
10	Catholic Charities and Family Services	2600 North Howard Street, Baltimore MD 21218	PRP (child)	Baltimore City

<sup>4</sup> Summation of monthly totals for claims paid since October 2013 launch, with claim submissions beginning November 2013.

	<b>Provider</b>	<b>Address</b>	<b>Provider Type*</b>	<b>County</b>
11	Catholic Charities and Family Services	1118 Light St. Suite 200, Baltimore, MD 21230	PRP (child)	Baltimore City
12	Channel Marker, Inc	222 Port Street, Easton, MD 21601	PRP (adult)	Talbot
13	Channel Marker, Inc	420 Dorchester Avenue, Cambridge, MD 21613	PRP (adult)	Dorchester
14	Channel Marker, Inc	508 Kerr Avenue, Denton, MD 21613	PRP (adult)	Caroline
15	Cornerstone Montgomery, Inc	6040 Southport Drive, Bethesda, MD 20814	PRP (adult)	Montgomery
16	Crossroads Community, Inc	120 Banjo Lane Centreville, MD 21617	PRP (both)	Queen Anne's
17	Crossroads Community, Inc	937 Gateway Drive, Chestertown, MD 21620	PRP (both)	Kent
18	Crossroads Community, Inc	404 LeCompte Street, Cambridge, MD 21613	PRP (both)	Dorchester
19	Eastern Avenue Health Solutions	5920 Eastern Avenue, Suite C, Baltimore, MD 21224	OTP	Baltimore City
20	Family Services, Inc	630 East Diamond Ave, Gaithersburg, MD 20877	PRP (adult)	Montgomery
21	Family Services, Inc	5508 Karen Elaine Drive, Ste 824, New Carrollton, MD 20784	PRP (adult)	Prince George's
22	Family Services, Inc	933 Clopper Rd, Apt A3, Gaithersburg, MD 20878	PRP (adult)	Montgomery
23	Go-Getters, Inc	431 E. Main St, Salisbury, MD 21801	PRP (adult)	Wicomico
24	Go-Getters, Inc	406 Trinity Drive, Salisbury, MD 21801	PRP (adult)	Wicomico
25	Go-Getters, Inc	11519 Somerset Avenue, Princess Anne, MD 21853	PRP (adult)	Somerset
26	Go-Getters, Inc	108 West Lehigh Avenue, Salisbury, MD 21801	PRP (adult)	Wicomico
27	Go-Getters, Inc	7033 Worcester Highway, Newark, MD 21841	PRP (adult)	Worcester
28	Haven	4536 Harford Rd, Baltimore, MD 21214	PRP (adult)	Baltimore City
29	Hope Health Systems	6707 Whitestone Road; Suite 106, Woodlawn, MD 21207	PRP (both)	Baltimore County
30	Hope Health Systems	6707 Whitestone Road; Suite 106, Woodlawn, MD 21207	MT	Baltimore County
31	Humanim	6355 Woodside Ct, Columbia, MD 21046	PRP (adult)	Howard
32	Institutes for Behavioral Health Resources	2104 Maryland Avenue Baltimore, MD 21218	OTP	Baltimore City
33	Johns Hopkins Bayview Medical Center	5200 Eastern Avenue, MFL-West Tower Room 428, Baltimore, MD 21224	PRP (adult)	Baltimore City
34	Leading By Example, LLC	8307 Philadelphia Road 1st Floor Rosendale, MD 21237	PRP (both)	Baltimore County
35	Lower Shore Clinic	704 N. Division St. Salisbury, MD 21801	MT	Wicomico
36	Man Alive, Inc	2117 Maryland Ave, Baltimore, MD 21218	OTP	Baltimore City
37	Mosaic Community Services	1931 Greenspring Drive, Timonium, MD, 21093	PRP (adult)	Baltimore County
38	Mosaic Community Services	20 Winters Lane, Cantonville, MD, 21228	PRP (adult)	Baltimore County
39	Mosaic Community Services	288 E. Green Street, Westminster, MD 21157	PRP (adult)	Carroll

	<b>Provider</b>	<b>Address</b>	<b>Provider Type*</b>	<b>County</b>
40	Mosaic Community Services	2225 North Charles St, Baltimore, MD 21218	PRP (adult)	Baltimore City
41	Mosaic Community Services	2225 North Charles St, Baltimore, MD 21218	MT	Baltimore City
42	People Encouraging People	4201 Primrose Avenue, Baltimore, MD 21215	PRP (adult)	Baltimore City
43	People Encouraging People	4201 Primrose Avenue, Baltimore, MD 21215	MT	Baltimore City
44	People Encouraging People	1506 Woodlawn Drive, Suite C, Gwynn Oak, MD 21207	MT	Baltimore County
45	People Encouraging People	337 Brightseat Road, Suite 210, Hyattsville, MD 20785	MT	Prince George's
46	People Encouraging People	7207 Baltimore-Annapolis Blvd., Suite A, Glen Burnie, MD 21061	MT	Anne Arundel
47	People Encouraging People	255 North Stonestreet Avenue, Rockville, MD 20850	MT	Montgomery
48	Prologue, Inc	3 Milford Mill Road, Pikesville, MD 21208	PRP (adult)	Baltimore County
49	Psychotherapeutic Services	839 Bestgate Dr., Annapolis, MD 21401	PRP (adult)	Anne Arundel
50	Psychotherapeutic Services	337 Brightseat Rd, Landover, MD 20785	PRP (adult)	Prince George's
51	Sinai Hospital Addictions Recovery Program (SHARP)	2401 W. Belvedere Avenue Baltimore, MD 21215	OTP	Baltimore City
52	Therapeutic Living for Families	3425 Sinclair Lane, Baltimore, MD 21213	PRP (both)	Baltimore City
53	Therapeutic Living for Families	1837 1/2 Pulaski Highway, Edgewood, MD 21040	PRP (both)	Harford
54	University of Maryland Medical Center- Harbor City Unlimited	1227 W. Pratt Street Baltimore, MD 21223	PRP (adult)	Baltimore City
55	University of Maryland Medical Center- Program of Assertive Community Treatment	701 W. Pratt Street 5th floor Baltimore, MD 21201	MT	Baltimore City
56	Upper Bay Counseling	200 Booth Street, Elkton, MD 21921	PRP (both)	Cecil
57	Upper Bay Counseling	626 Revolution Street, Havre De Grace, MD 21078	PRP (both)	Harford
58	Way Station	217 W. Patrick St, Frederick, MD, 21701	PRP (adult)	Frederick
59	Way Station	9030 Rte 108, Columbia, MD 21045	PRP (adult)	Howard
60	Way Station	328 N. Potomac St., Hagerstown, MD 21740	PRP (adult)	Washington

\*PRP is a Psychiatric Rehabilitation Program serving children, adults, or both; OTP is an Opioid Treatment Program; MT is a Mobile Treatment provider